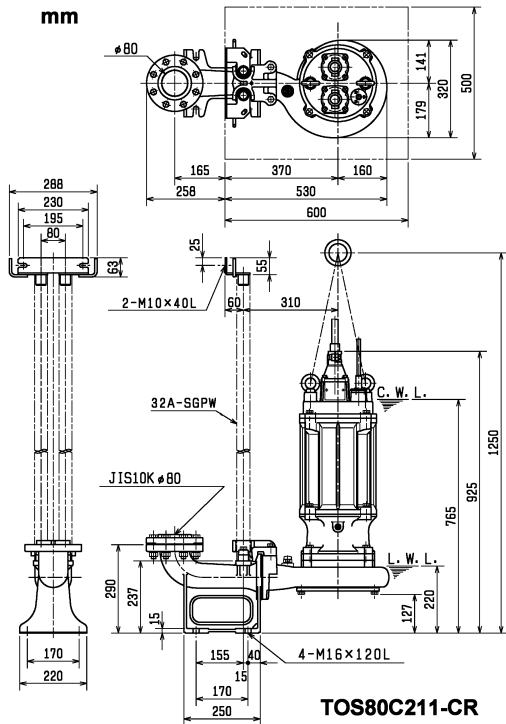
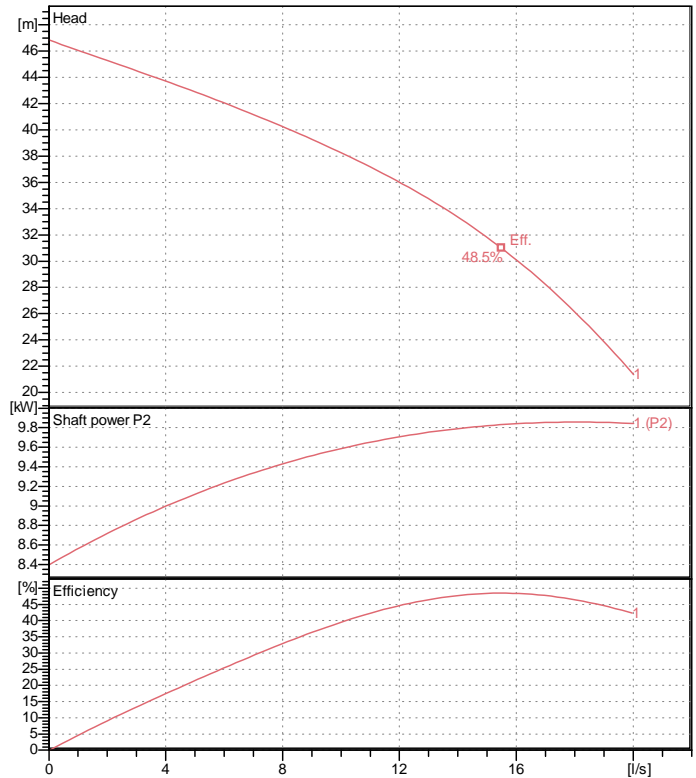


Data sheet 80C211-CR-51



TOS80C211-CR

CWL: Continuous running water level
LWL: Lowest running water level



Specification

Electric submersible pump
Degree of protection IP 68
Depth of submersion max. 15 m
Type of impeller Dual channel impeller
Free passage 25.5 mm
Suitable for:
sewage water and liquids carrying solids

Electric motor

Dry-type submersible induction motor
Insulation class F 2Poles 2935 1/min
Starting mode Star-delta
Rated voltage 400 V 50 Hz 3~
Power uptake 14.40 kW
Rated power 11.00 kW
Rated current 23.7 A
Start current 158.1 A

Cable

10m H07RN-F 4Cx2,5mm²/H07RN-F 3Cx2,5mm²/2PNCT 2Cx1,25mm²

Motor Protection

Circle thermal protector
(snap-action bi-metal device)

Shaft seal

Double inside mechanical seal in oil bath
additional lubrication by oil lifting device

Primary seal
Silicon carbide on silicon carbide
Secondary seal
Silicon carbide on silicon carbide

Bearings

Shielded ball bearings, maintenance-free

Materials

Impeller
Chromium Iron HiCrFC + Tungsten Carbide
Pump casing FC200 (EN-GJL-200)
Suction cover Chromium Iron HiCrFC
Motor Frame FC200 (EN-GJL-200)
Shaft SUS420J2 (EN-X30Cr13)

Discharge size

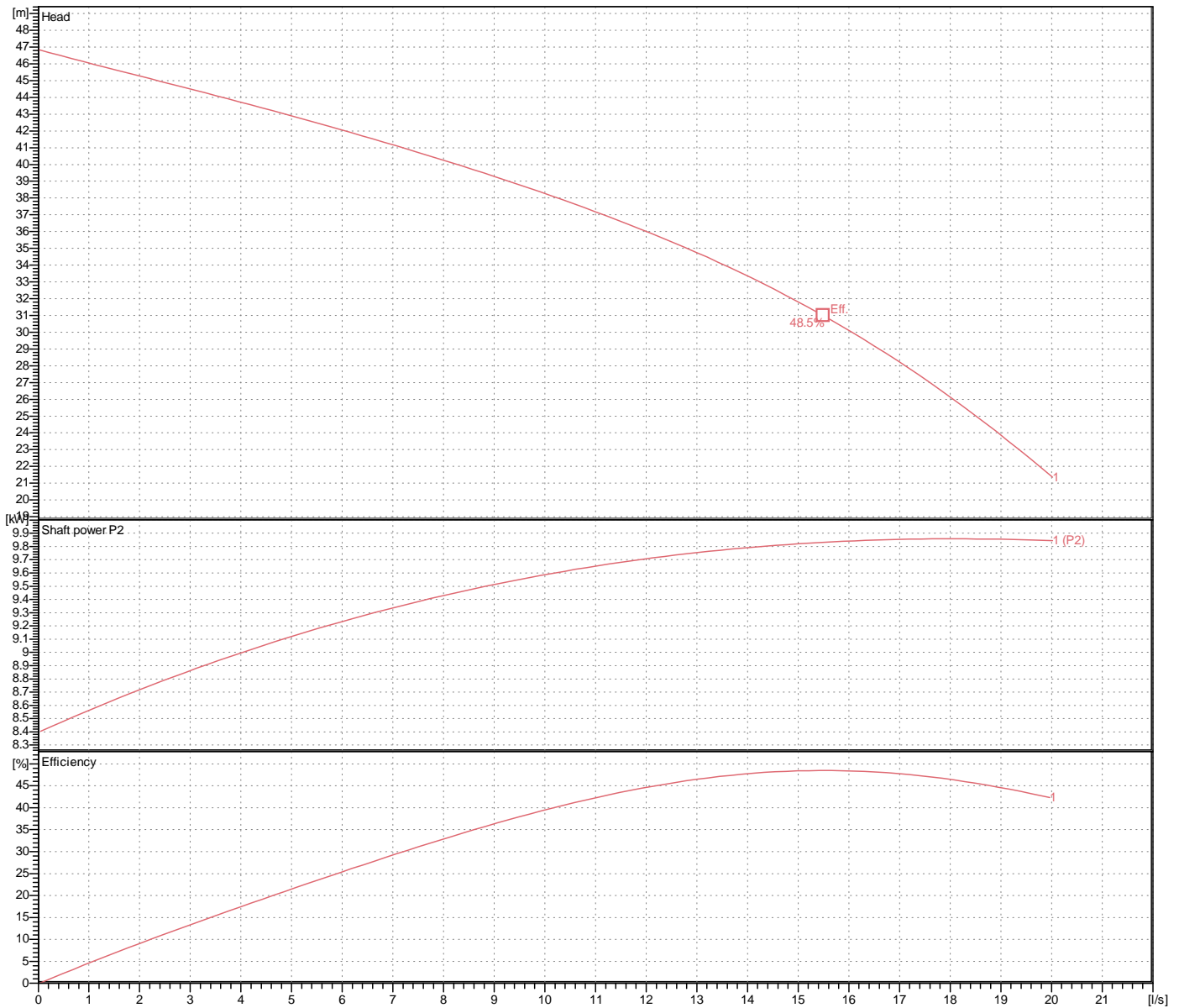
3" (80mm) special screwed-in mating flange
guide rail fitting optional

Weight

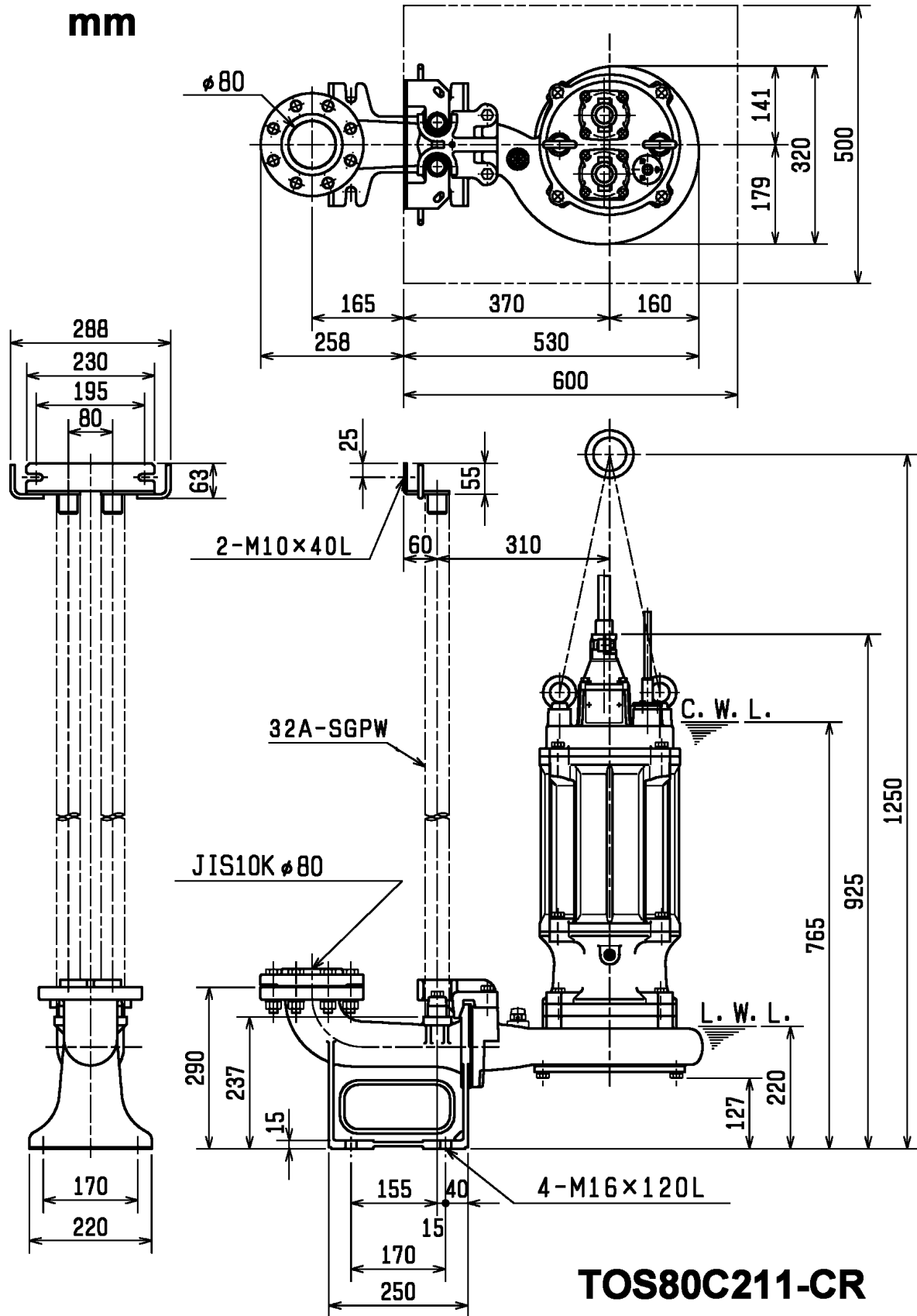
143 kg (dry weight of the pump only without cable)

Performance curve 80C211-CR-51

Discharge port	3"
Head	46.9 m
Flow	20.0 l/s
Rated power	11.00 kW
Power input	14.40 kW
Phases	3~
Voltages	400 V
Frequency	50 Hz
Rated current	23.7 A
Starting current	158.08 A
Number of poles	2
Speed	2935 1/min
Starting mode	Star-delta
Insulation class	F



Dimensions TOS80C211-CR-51



TOS80C211-CR

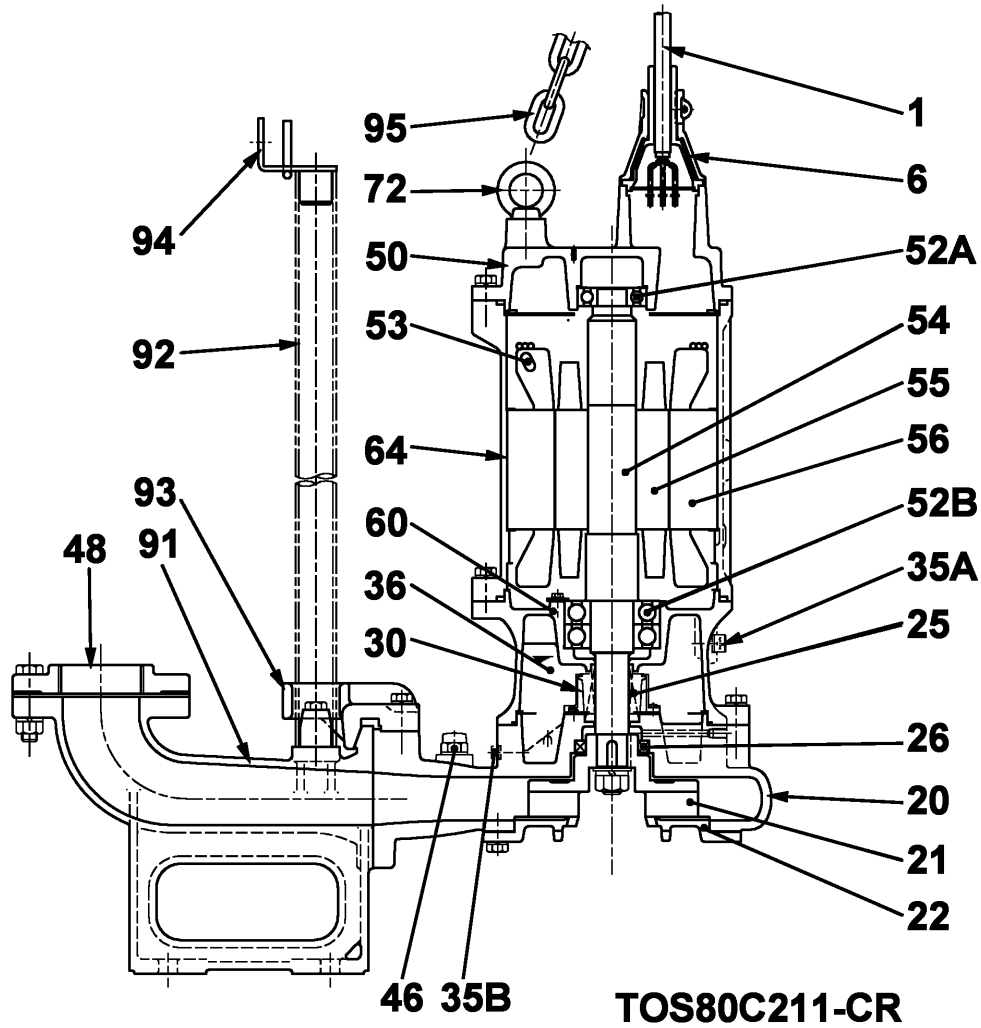
CWL: Continuous running water level
LWL: Lowest running water level

TSURUMI PUMP

Tsurumi Europe GmbH
17.10.2018 V.18 / 1.10.2015

Heltorfer Str. 14 * 40472 Düsseldorf * Germany
Tel.: +49-211-4179373 sales@tsurumi.eu
Fax: +49-211-417937-480 www.tsurumi.eu

Sectional drawing TOS80C211-CR-51



No.	Description	Remark	No.	Description	Remark
1	Cable (3x)	H07RN-F / 2PNCT-F	53	Motor Protector 380/400/415V-50Hz KA314-HRXL00 (H.C)	
6	Stuffing box (2x)	FC200 (EN-GJL-200)	54	Shaft	SUS420J2 (EN-X30Cr13)
20	Pump casing	FC200 (EN-GJL-200)	55	Rotor	.
21	Impeller	Chromium Iron HiCrFC + Tungsten Carbide	56	Stator	.
22	Suction cover	Chromium Iron HiCrFC	60	Bearing Housing	FC200 (EN-GJL-200)
25	Mechanical seal	H-35	64	Motor Frame	FC200 (EN-GJL-200)
26	Oil seal	TC557812	72	Eye screw (2x)	Construction steel SS400
29	Oil casing	FC200 (EN-GJL-200)	91	duck foot bend	FC200 (EN-GJL-200)
35A	Oil screw	SUS304 (EN-X5CrNi18-10)	92	Guide pipe (option) (2x)	Steel pipe
35B	Oelschraube.	SUS304 (EN-X5CrNi18-10)	93	guide support	FCD45 (EN-GJS-450-10)
36	Lubricant	Turbine oil (ISO VG32)	94	Guide pipe holder	SUS304 (EN-X5CrNi18-10)
46	Air vent screw	Nylon	95	Chain	Construction steel SS400
48	Screwed Flange	FC200 (EN-GJL-200)			
50	Motor cover	FC200 (EN-GJL-200)			
52A	Upper bearing	6306ZZC3			
52B	Lower bearing	6309ZZD2C3			