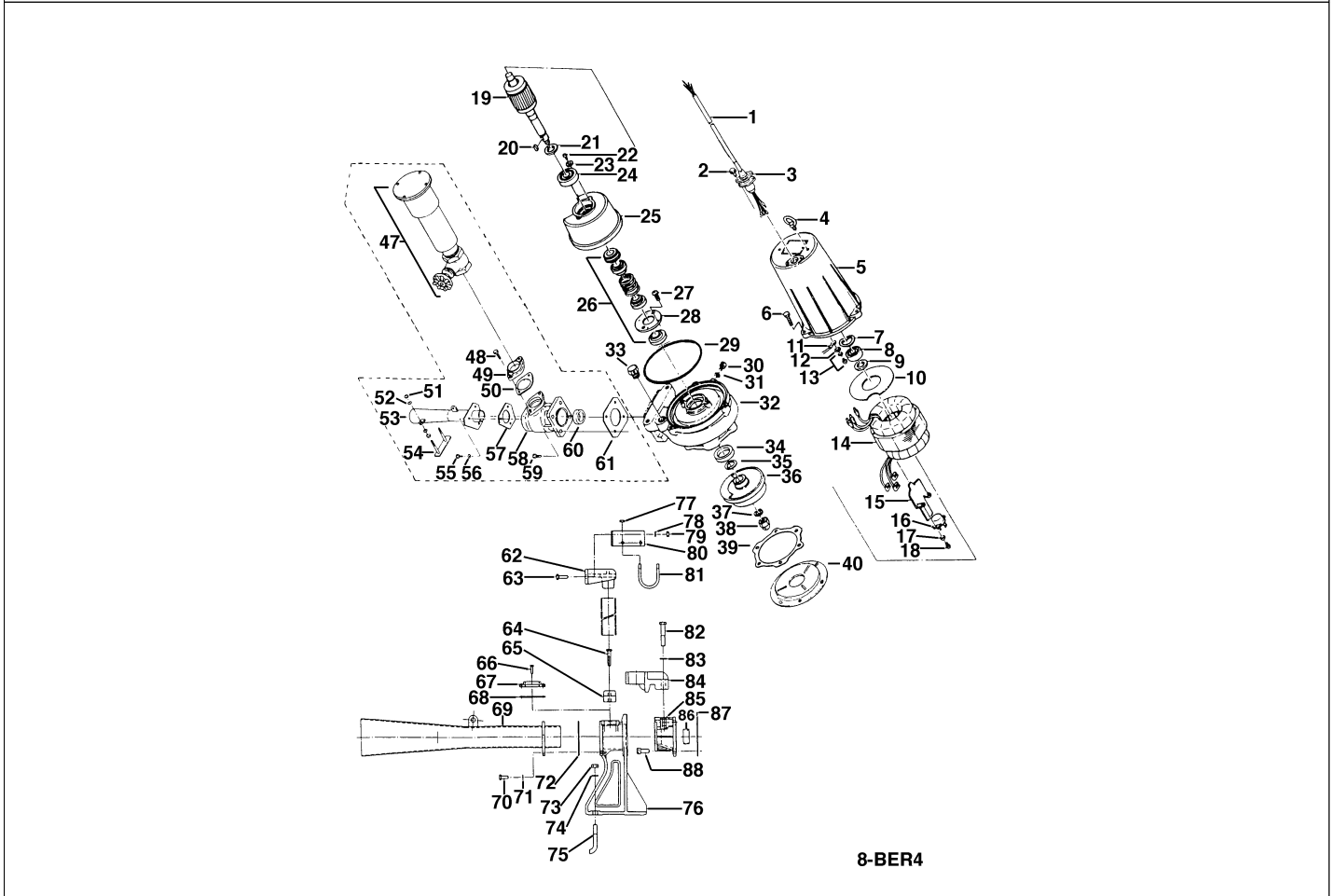


8-BER4

2024-02-21

Pos.no	Item no.	Description	Qty.
--------	----------	-------------	------



Pos.no	Item no.	Description	Qty.
1.1.1	173-301-16	Packing & O-Ring Set	1
1	001-TEG-31	Cabletyre Cable Set (20m) H07RN-F4Cx1,5mm ² with gland	1
1	M01-TEG-31	Cabletyre Cable Set (20m) NSSHOU 4Cx1,5mm ²	1
2	140-427-17	Hex.Bolt (w/Plain Washer) M5x15 SUS304 (EN X5CrNi18-10)	2
3	003-190-10	Gland SUS316 (EN X5Cr-Ni-Mo17-12-2)	1
4	072-105-12	Eye Bolt M8 SS	2
5	064-000-64	Motor Frame FC	1
6	140-057-12	Hex.Bolt M8x30 SUS304 (EN X5CrNi18-10) Stainless Steel	3
7	142-194-18	Wave Washer #6203 SK-5	1
8	052-102-17	Bearing 6203ZZC3	1
8	052-186-23	Bearing (new) AC-6203ZZC3	1
9	061-152-10	Bearing Collar d17.1xd23x1.6t Kaltgewalztes Blech	1
10	058-000-34	Lead Wire Protection Plate d52xd115x1t Bakelite	1
11	009-112-16	Earth Terminal 1.25mm ²	1
12	142-124-20	Plain Washer M4 SPC	1
13	143-086-22	Pan Screw (w/Spring Washer) M4x8 SWRM	1
14	056-003-31	Stator 380/400/415V-50HZ	1
15	127-143-15	Protector Fixing Plate 8-BE2 SPC	1
15	127-226-13	Protector Fixing Plate (2nd) 8-BE2 SPC	1
16	053-465-14	Motor Protector 380/400/415V-50HZ KA311-DPXL62C (T.C)	1
17	142-124-20	Plain Washer M4 SPC	2
18	143-016-18	Pan Screw M4x12 SWRM	2
19	055-001-18	Rotor w/Bearing SUS403 (EN X6Cr13) Stainless Steel	1
20	147-040-13	Impeller Key 5x5x16l Stainless Steel	1
21	061-158-16	Bearing Collar d20.1xd28x1.6t SPC	1
22	143-028-13	Pan Screw M5x10 SWRM	2
23	062-187-17	Bearing Fixing Washer d5.5xd18x2.3t SPC	2
24	052-107-12	Bearing 6304ZZC3	1
25	060-000-64	Bearing Housing FC	1
26	025-000-99	Mechanical Seal H-20T SiC	1
27	140-070-10	Cross-Recessed Pan Screw M5x6 (SWRM)	2
28	030-122-15	Seal Stopper H-20 SPC	1
29	122-072-17	O-Ring P-140 NBR	1
30	035-112-17	Oil Plug M8x12 SUS304 (EN X5CrNi18-10) Stainless Steel	1
31	121-248-13	Packing d8.2xd13.5x2t PE	1
32	020-609-10	Pump Casing 8-BE2 FC	1
33	046-107-13	Air Release Valve PT-1/2 Nylon	1
34	026-107-11	Oil Seal DD-32488 (NBR)	1
35	040-104-25	Impeller Shim d18.2xd29x0.3t SUS304 (EN X5CrNi18-10) Stainless Steel	1
36	021-720-11	Impeller (50Hz) FC	1

8-BER4

Kontroll-Nr. --

2024-02-21 V.01.02.2023

Pos.no	Item no.	Description	Qty.
37	142-165-10	Spring Washer M12 SUS304 (EN X5CrNi18-10) Stainless Steel	1
38	141-118-15	Hex.Cap Nut M12(H=15.5) SUS304 (EN X5CrNi18-10) Stainless Steel	1
39	120-145-16	Packing (S.Cover) d112xd129x0.3t PE	1
40	022-579-16	Suction Cover 8-BER2 FC	1
41	142-127-10	Plain Washer M8 SUS304 (EN X5CrNi18-10) Stainless Steel	3
42	144-116-12	Stud Bolt M8x113(20/13) SUS403 (EN X6Cr13) Stainless Steel	3
43	023-280-10	Strainer 8-BER2 SPC	1
44	049-104-19	Bottom Plate 4-A SPC	1
45	142-127-10	Plain Washer M8 SUS304 (EN X5CrNi18-10) Stainless Steel	3
46	141-005-18	Hex.Nut M8 SUS304 (EN X5CrNi18-10)	3
47	215-104-10	Silencer & Valve Set 4-TR(S)	1
48	140-055-10	Hex.Bolt M8x25 SUS304	2
49	048-128-16	Screwed Flange 25mm(P.C.80) FC	1
50	121-151-18	Packing (Air Release Valve) P.C.80xd50 CR	1
51	141-006-19	Hex.Nut M10 SUS304 (EN X5CrNi18-10)	4
52	142-128-11	Plain Washer M10 Kaltgewalztes Blech	4
53	153-000-01	Diffuser 8-BER2 SS+SGP	1
54	154-111-18	Diffuser Base 8/15-BER2 SS	1
55	140-054-19	Hex.Bolt M8x20 SUS304 (EN X5Cr18-10)	3
56	142-127-10	Plain Washer M8 SUS304 (EN X5CrNi18-10) Stainless Steel	3
57	121-191-10	Packing P.C.80xd62 NBR	1
58	151-103-18	Suction Casinq 8-BER2 FC	1
59	140-078-19	Hex.Bolt M10x30 SUS304	4
60	045-000-01	Nozzle Ring ø28xø34x17l SUS304 (EN X5CrNi18-10) Stainless Steel	1
61	121-142-16	Packing (Discharge Bend) 90mm2(P.C.98) NBR	1
62	094-103-18	Guide Support TOS-50/65 FCD	1
63	140-079-10	Hex.Bolt M10x40 SUS304 (EN X5Cr18-10)	2
64	140-079-10	Hex.Bolt M10x40 SUS304 (EN X5Cr18-10)	2
65	096-100-11	Guide Connector 26mm SS	2
66	140-055-10	Hex.Bolt M8x25 SUS304	2
67	048-128-16	Screwed Flange 25mm(P.C.80) FC	1
68	121-151-18	Packing (Air Release Valve) P.C.80xd50 CR	1
69	153-000-01	Diffuser 8-BER2 SS+SGP	1
70	140-054-19	Hex.Bolt M8x20 SUS304 (EN X5Cr18-10)	3
71	142-127-10	Plain Washer M8 SUS304 (EN X5CrNi18-10) Stainless Steel	3
72	121-191-10	Packing P.C.80xd62 NBR	1
73	141-008-37	Hex.Nut M16 S35C	1
74	142-130-29	Plain Washer M16 SPC	1
75	144-167-18	Foundation Bolt M16x120 SS	1
76	151-104-19	Suction Casinq (Guide Rail Type) TOS-8BER2 Type FC	1
77	141-006-19	Hex.Nut M10 SUS304 (EN X5CrNi18-10)	2
78	142-164-19	Spring Washer M10 SUS304	1
78	142-128-11	Plain Washer M10 Kaltgewalztes Blech	1
79	141-006-19	Hex.Nut M10 SUS304 (EN X5CrNi18-10)	2
80	127-101-11	Air-Inlet Pipe Support TOS-8BER2 Type SS	1
81	144-322-13	U-bolt #25.M10.B Type SS	1
82	140-082-16	Hex.Bolt M10x55 SUS304 (EN X5CrNi18-10)	2
83	142-164-19	Spring Washer M10 SUS304	2
84	093-108-10	Guide Hook TOS-50 FCD	1
85	152-105-13	Nozzle (Guide Rail Type) TOS-8BER2 Type FC	1
86	045-000-01	Nozzle Ring ø28xø34x17l SUS304 (EN X5CrNi18-10) Stainless Steel	1
87	121-142-16	Packing (Discharge Bend) 90mm2(P.C.98) NBR	1
88	140-288-14	Hex. Socket Cap Bolt M10x35 SUS304 (EN X5CrNi18-10) Stainless	4
	173-301-16	Packing & O-Ring Set	1
	##oilVG32	ml Turbine Oil ISO VG32	420
	##25A-SGPW	Guide Pipe, Diameter 25mm (not included)	2