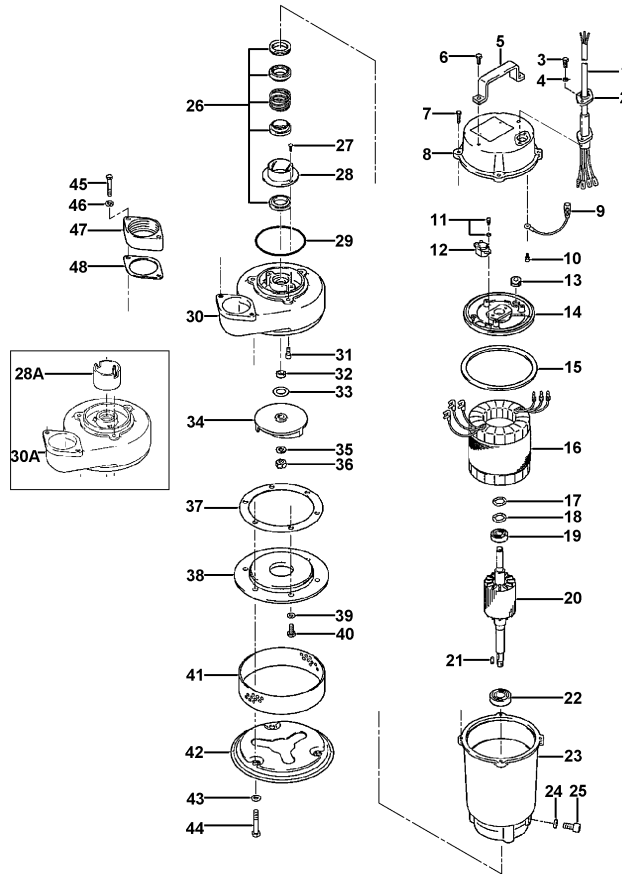


50SFQ2.75-52

2022-03-08

Pos.no	Item no.	Description	Qty.	UP / EUR
--------	----------	-------------	------	----------

50SFQ2.75-52


50SFQ2.75-52

Pos.no	Item no.	Description	Qty.	UP / EUR
1.1.1	173-279-14	Packing & O-Ring Set	1	49,73
1	001-102-48	Cabletyre Cable Set (6m) VCT4Cx1.25mm2 LBT	1	136,94
2	003-190-10	Gland SUS316 (EN X5Cr-Ni-Mo17-12-2)	1	10,83
3	140-018-24	Hex.Bolt M5x15 SUS316 (DIN 1.4401) Stainless Steel	2	2,36
4	142-125-34	Plain Washer M5 SUS316 (DIN 1.4401) Stainless Steel	2	1,19
5	068-191-12	Handle 4/8-CL2 SUS316 (DIN 1.4401) Stainless Steel	1	73,19
6	140-032-24	Hex.Bolt M6x15 SUS316 (DIN 1.4401) Stainless Steel	2	2,36
7	140-021-20	Hex.Bolt M5x20 SUS316 (DIN 1.4401) Stainless Steel	4	3,54
8	051-171-14	Motor Head Cover SCS14 (DIN 1.4408 GX5CrNiMo19-11-2) Stainless Steel Casting	1	1.436,74
9	009-001-06	Earth Terminal 1.25mmx80L	1	3,54
10	143-085-21	Pan Screw (w/Spring Washer) M4x6 SWRM	1	0,61
11	143-126-38	Pan Screw (w/Spring Washer/Plain Washer) M4x12 SWRM	1	1,19
12	053-267-14	Motor Protector 380/400/415V-50Hz KA311-DAXL63 (T)	1	170,89
13	016-100-13	Lead Wire Protection Bush S-400(E) NBR	1	2,36
14	050-245-17	Motor Bracket FC	1	63,34
15	121-252-10	Packing (M.Bracket/M.Frame) d127.3xd144.8x3.5t NBR	1	10,28
16	056-006-98	Stator 308V/400V/415V-50Hz	1	Price on req.
17	142-192-16	Wave Washer 6201(D=32,t=0.4) SK5	1	4,99
18	142-451-16	Wave Washer 6201(D=32,t=0.25) SUP	1	3,90
19	052-100-15	Bearing 6201ZZC3	1	13,90
20	055-002-24	Rotor	1	Price on req.
21	147-035-15	Impeller Key 4x4x13.5l SUS316 (DIN 1.4401) Stainless Steel	1	33,07
22	052-102-17	Bearing 6203ZZC3	1	19,17
23	064-330-13	Motor Frame SCS14 (DIN 1.4408 GX5CrNiMo19-11-2) Stainless Steel Casting	1	3.001,00
24	121-387-15	Packing d10.3xd16x3t PE	1	1,19
25	035-117-12	Oil Plug M10x20 SUS316 (DIN 1.4401) Stainless Steel	1	33,06
26	025-189-14	Mechanical Seal X-16W SiC	1	555,82
27	143-070-13	Cross-Recessed Pan Screw M5x6 (SWRM)	2	Price on req.
28	030-157-19	Oil Lifter W-14HL Resin	1	7,51
29	122-129-23	O-Ring G-90 FPDm	1	27,16
30	020-000-99	Pump Casing 4/8-CL2 SCS14 (DIN 1.4408 GX5CrNiMo19-11-2) Stainless Steel Casting	1	Price on req.
31	140-249-26	Hex. Socket Cap Bolt M6x15 SUS304 (EN X5CrNi18-10) Stainless Steel	3	18,89
32	071-105-19	Shaft Sleeve 4-CLS SUS316 (DIN 1.4401) Stainless Steel	1	23,90
33	040-114-15	Impeller Shim d12.2xd17x0.3t SUS316 (DIN 1.4401) Stainless Steel	1	4,72
34	021-932-18	Impeller (50Hz) 50Hz SCS14 (DIN 1.4408 GX5CrNiMo19-11-2) Stainless Steel Casting	1	355,74
35	142-164-22	Spring Washer M10 SUS316 (DIN 1.4401) Stainless Steel	1	1,69
36	141-006-22	Hex.Nut M10 SUS316 (DIN 1.4401) Stainless Steel	1	8,36
37	120-131-19	Packing d125xd159x0.3t PE	1	3,32
38	022-304-18	Suction Cover 4-CL SCS14 (DIN 1.4408 GX5CrNiMo19-11-2) Stainless Steel Casting	1	361,29
39	142-163-21	Spring Washer M8 SUS316 (DIN 1.4401) Stainless Steel	3	0,90

50SFQ2.75-52

Kontroll-Nr. --

2022-03-08 V.01.02.2022

Pos.no	Item no.	Description	Qty.	UP / EUR
40	140-052-20	Hex.Bolt M8x16 SUS316 (DIN 1.4401) Stainless Steel	3	4,72
41	023-122-13	Strainer 4-CL SUS316 (DIN 1.4401) Stainless Steel	1	83,63
42	049-125-16	Bottom Plate 4-CL SUS316 (DIN 1.4401) Stainless Steel	1	106,43
43	142-127-36	Plain Washer M8 SUS316 (EN X5CrNiMo17-12-2) Stainless Steel	3	0,90
44	140-060-21	Hex.Bolt M8x50 SUS316 (DIN 1.4401) Stainless Steel	3	10,00
45	140-058-26	Hex.Bolt M8x40 SUS316 (DIN 1.4401) Stainless Steel	2	8,27
46	142-163-21	Spring Washer M8 SUS316 (DIN 1.4401) Stainless Steel	2	0,90
47	048-118-13	Screwed Flange 50mm(P.C.84) SCS14 (DIN 1.4408 GX5CrNiMo19-11-2) Stainless Steel Casting	1	188,90
48	121-149-13	Packing P.C.84xd55 Cork	1	14,17
	173-279-14	Packing & O-Ring Set	1	49,73
	##oilVG32	ml Turbine Oil ISO VG32	125	Price on req.
28A	030-116-29	Oil Ring (Plastic)	1	Price on req.
30A	020-581-15	Pump Casing 4/8-CL2 SCS14 (DIN 1.4408 GX5CrNiMo19-11-2) Stainless Steel Casting	1	1.456,82

--	--	--	--	--