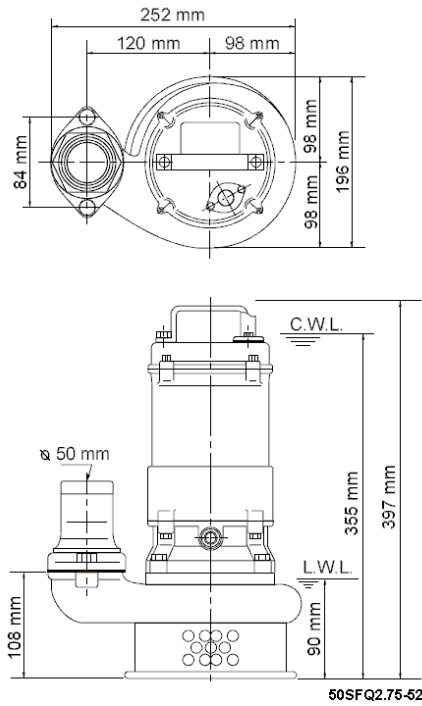
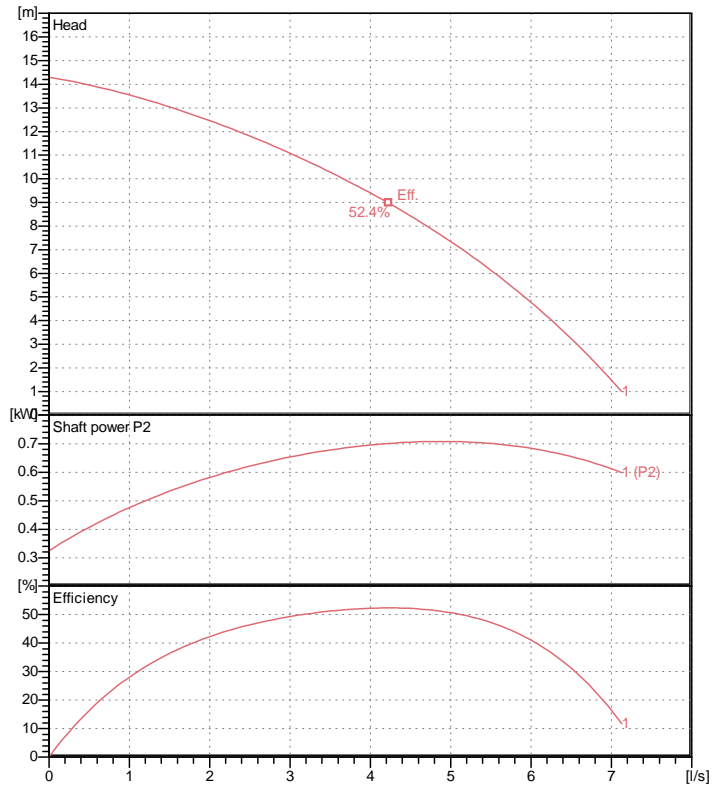


Data sheet 50SFQ2.75-52



CWL: Continuous running water level
LWL: Lowest running water level



Specification

Electric submersible pump
Degree of protection IP 68
Depth of submersion max. 10 m
Type of impeller Semi-open
Max. solid handling 6 mm
Suitable for:
corrosive liquids

Electric motor

Dry-type submersible induction motor
Insulation class E 2 Poles 2850 1/min
Starting mode Directly
Rated voltage 400 V 50 Hz 3~
Power uptake 1.10 kW
Rated power 0.75 kW
Rated current 2 A
Start current 11.0 A

Cable

10m H07RN-F 4Cx1,5mm²

Motor Protection

Miniature protector in windings
(snap-action bi-metal device)

Shaft seal

Double inside mechanical seal in oil bath
additional lubrication by oil lifting device

Primary seal

Silicon carbide on silicon carbide

Secondary seal

Silicon carbide on silicon carbide

Bearings

Shielded ball bearings, maintenance-free

Materials

Impeller	SCS14 (SUS GX5CrNiMo19-11-2)
Pump casing	SCS14 (SUS GX5CrNiMo19-11-2)
Suction cover	SCS14 (SUS GX5CrNiMo19-11-2)
Motor Frame	SCS14 (SUS GX5CrNiMo19-11-2)
Shaft	SUS316 (EN-X5CrNiMo17-12-2)

Discharge size

50mm JIS10K flange

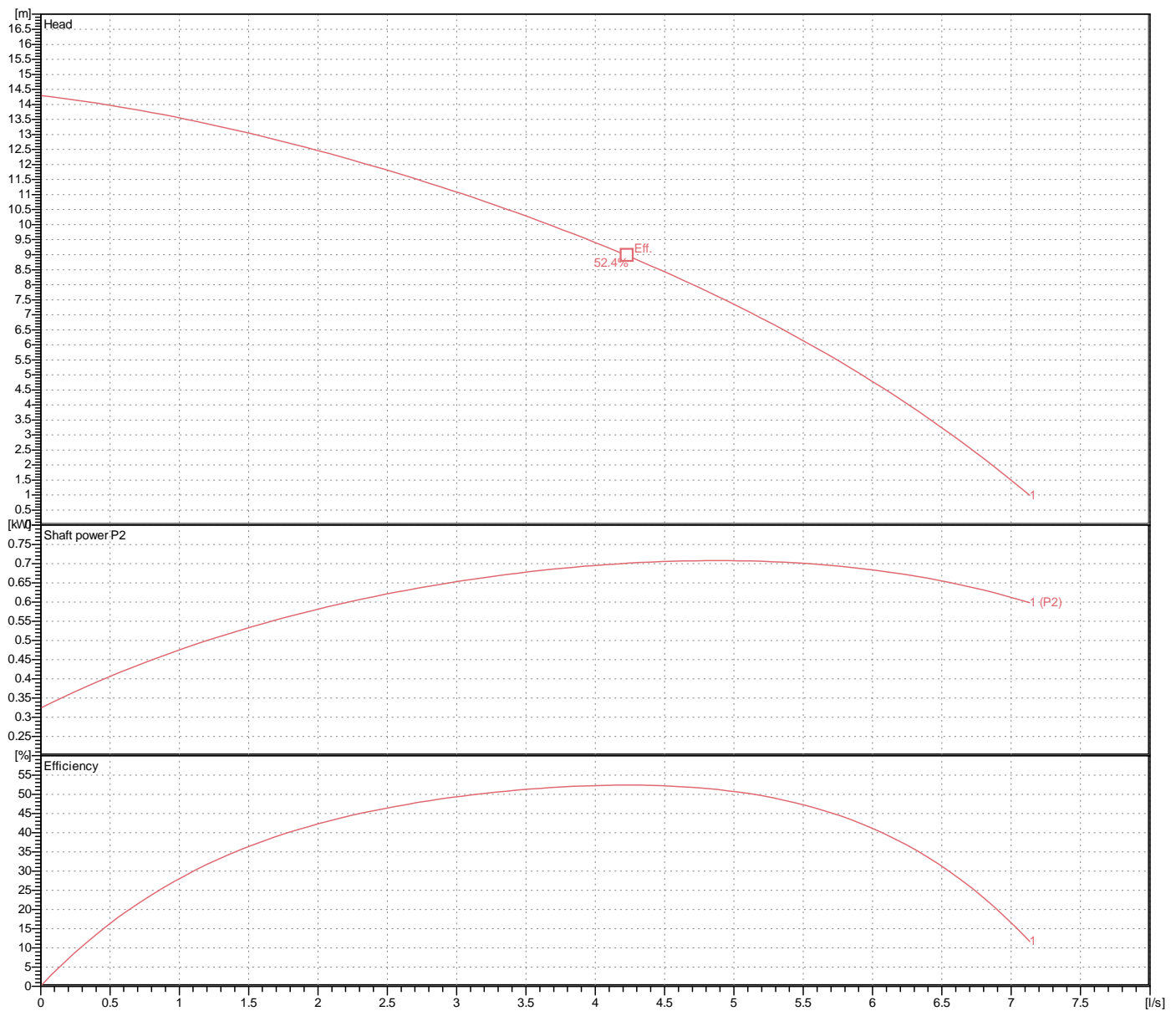
Weight

20 kg (dry weight of the pump only without cable)

Performance curve

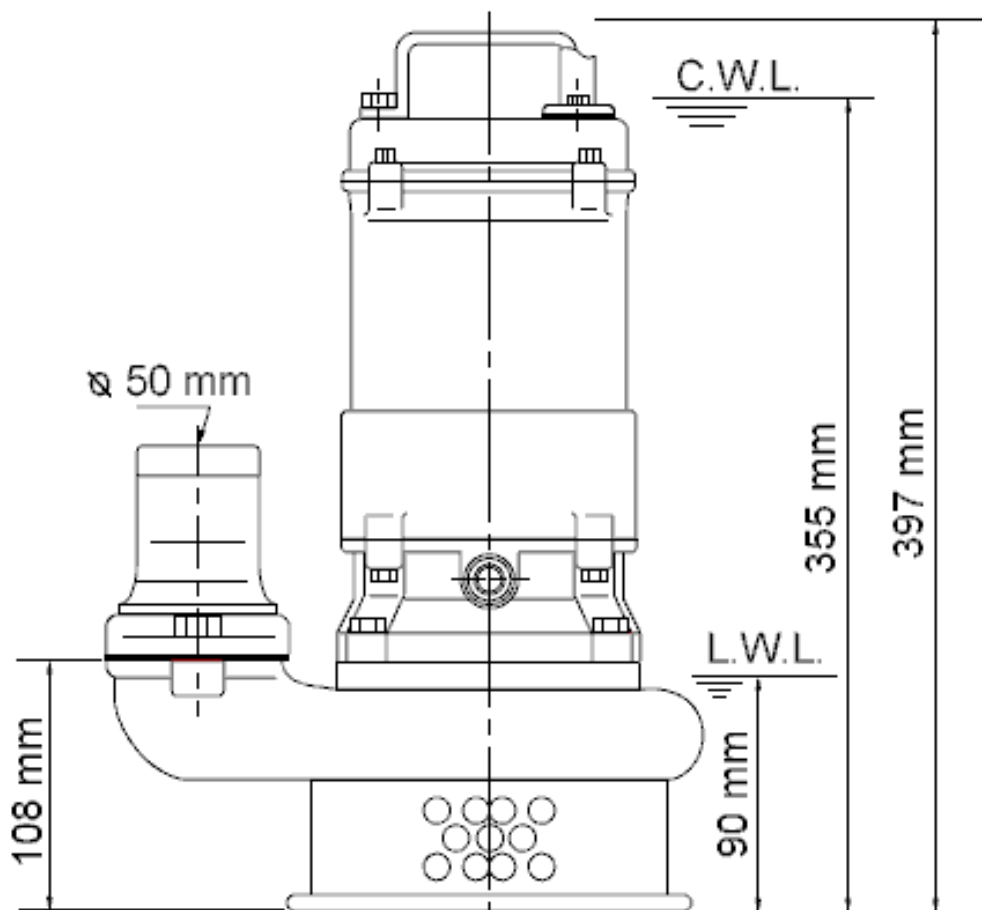
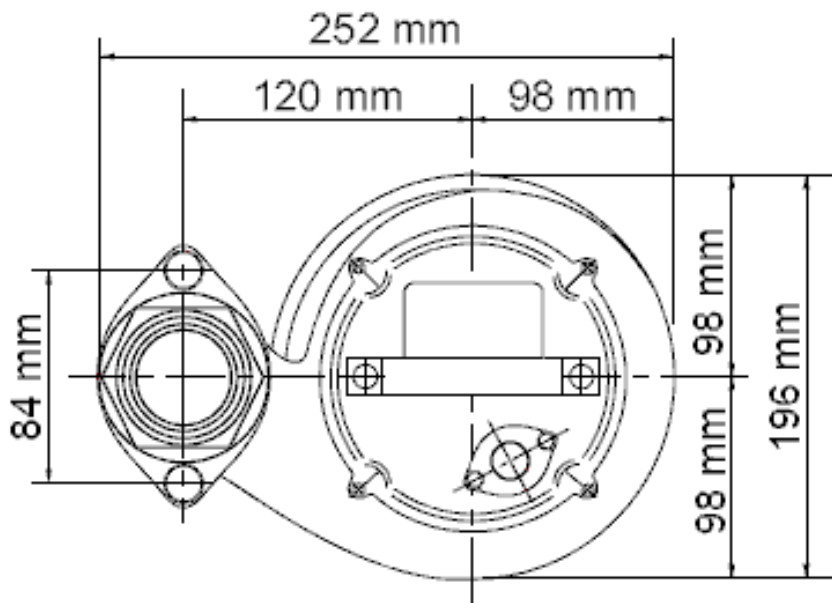
50SFQ2.75-52

Discharge port	2"
Head	14.3 m
Flow	7.1 l/s
Rated power	0.75 kW
Power input	1.10 kW
Phases	3~
Voltages	400 V
Frequency	50 Hz
Rated current	2 A
Starting current	11.00 A
Number of poles	2
Speed	2850 1/min
Starting mode	Directly
Insulation class	E



Dimensions

50SFQ2.75-52



50SFQ2.75-52

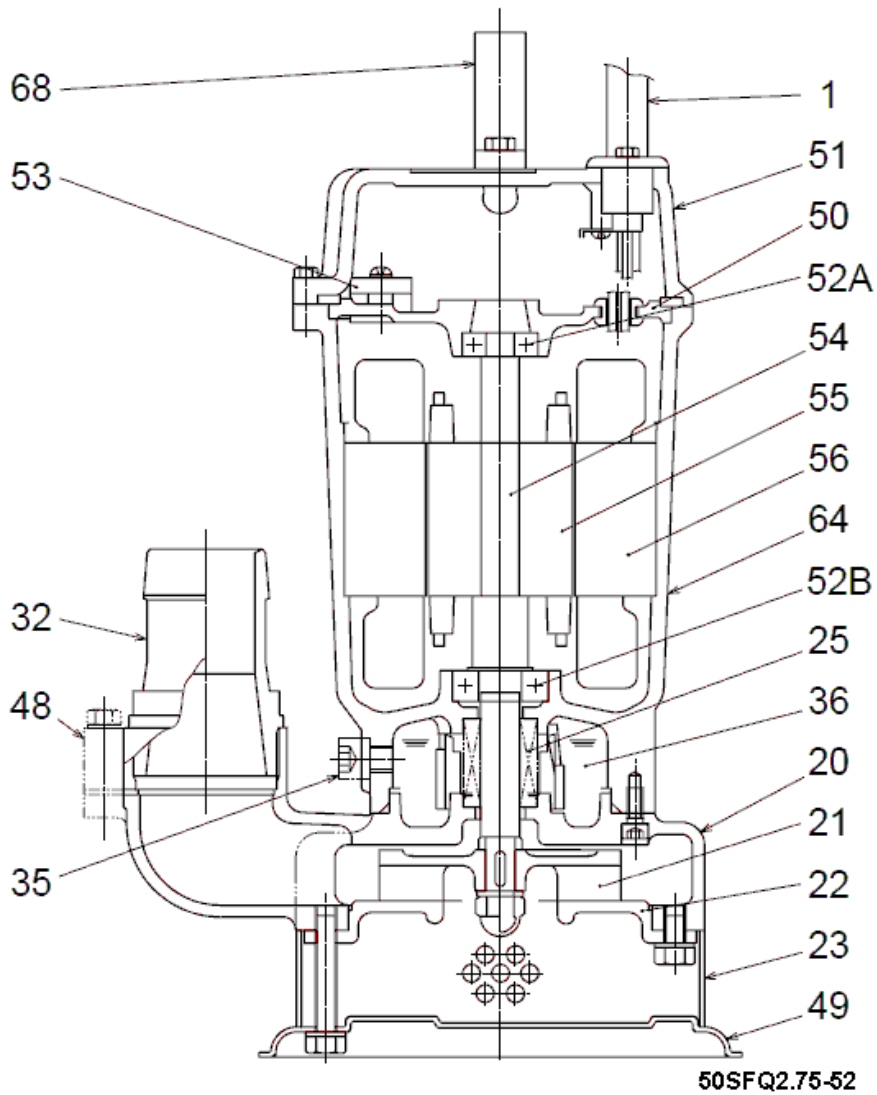
CWL: Continuous running water level
LWL: Lowest running water level



Tsurumi Europe GmbH
 23.05.2016 V.18 / 1.10.2015

Heltorf Str. 14 * 40472 Düsseldorf * Germany
 Tel.: +49-211-4179373 sales@tsurumi.eu
 Fax: +49-211-417937-480 www.tsurumi.eu

Sectional drawing 50SFQ2.75-52



No.	Description	Remark	No.	Description	Remark
1	Cable	H07RN-F	54	Shaft	SUS316 (EN-X5CrNiMo17-12-2)
20	Pump casing	SCS14 (SUS GX5CrNiMo19-11-2)	55	Rotor	.
21	Impeller	SCS14 (SUS GX5CrNiMo19-11-2)	56	Stator	.
22	Suction cover	SCS14 (SUS GX5CrNiMo19-11-2)	64	Motor Frame	SCS14 (SUS GX5CrNiMo19-11-2)
23	Strainer	SUS316 (EN-X5CrNiMo17-12-2)	68	Handle	SUS316 (EN-X5CrNiMo17-12-2)
25	Mechanical seal	X-16W			
32	Schlauchkupplung	SCS14 (SUS GX5CrNiMo19-11-2)			
35	Oil screw	SUS316 (EN-X5CrNiMo17-12-2)			
36	Lubricant	Turbine oil (ISO VG32)			
48	Screwed Flange	SCS14 (SUS GX5CrNiMo19-11-2)			
49	Bottom Plate	SUS316 (EN-X5CrNiMo17-12-2)			
50	Motor cover	FC150 (EN-GJL-150)			
51	Main cover	SCS14 (SUS GX5CrNiMo19-11-2)			
52A	Upper bearing	6201ZZC3			
52B	Lower bearing	6203ZZC3			
53	Motor Protector 380/400/415V-50Hz KA314-HRXL00 (H.C)				