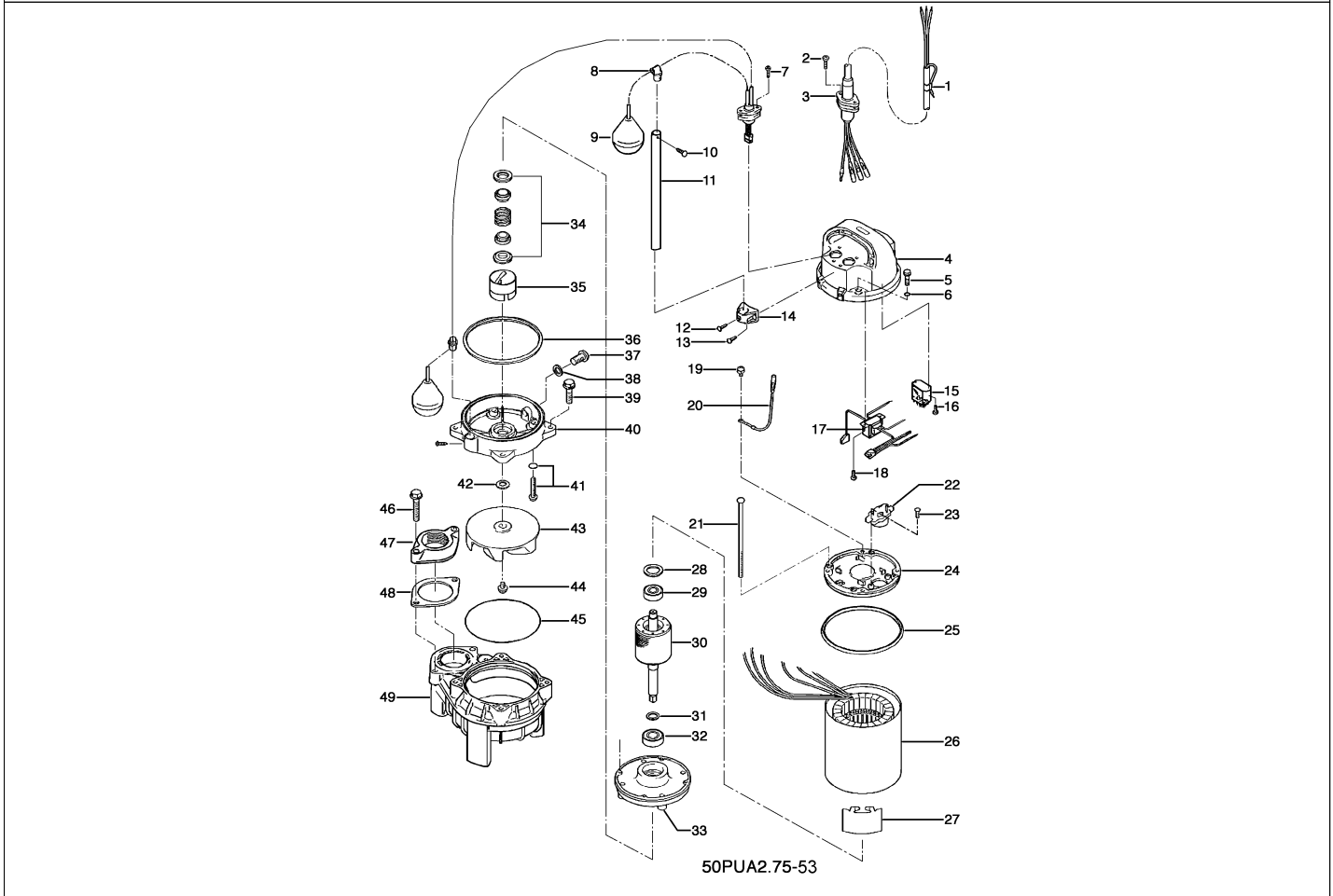


50PUA2.75-53

Kontroll-Nr. --

2024-02-26 V.01.02.2023

Pos.no	Item no.	Description	Qty.	UP / EUR
--------	----------	-------------	------	----------


50PUA2.75-53

1.1.1	173-000-07	Packing & O-Ring Set	1	
1	001-TEG-31	Cabletyre Cable Set (20m) H07RN-F4Cx1,5mm ² with gland	1	
1	M01-TEG-31	Cabletyre Cable Set (20m) NSSHÖU 4Cx1,5mm ²	1	
2	143-146-18	Tapping Screw (w/Plain Washer) M5x20 SUS304 (EN X5CrNi18-10) Stainless Steel	2	
3	003-190-10	Gland SUS316 (EN X5Cr-Ni-Mo17-12-2)	1	
4	051-000-03	Head Cover Resin	1	
5	140-000-07	Hex.Bolt (w/Plain Washer) M6x30(22L) SUS304 (EN X5CrNi18-10) Stainless Steel	4	
6	122-004-18	O-Ring P-6 NBR	4	
7	143-146-18	Tapping Screw (w/Plain Washer) M5x20 SUS304 (EN X5CrNi18-10) Stainless Steel	2	
8	109-129-19	Float Support Bush d14 Rubber	2	
9	106-482-14	Float Set AO2-2	1	
10	143-143-15	Tapping Truss Screw M4x16(D=8) SUS304 (EN X5CrNi18-10) Stainless Steel	2	
11	109-000-01	Float Support Pipe VP-14x250L(w/Hole, Black) VP	1	
12	143-143-15	Tapping Truss Screw M4x16(D=8) SUS304 (EN X5CrNi18-10) Stainless Steel	1	
13	143-174-15	Tapping Screw (w/Plain Washer) M4x14 SUS304 (EN X5CrNi18-10) Stainless Steel	2	
14	109-000-20	Holder Resin	1	
15	114-000-08	Power Relay LY-3F(AC24V)	1	
16	143-152-17	Tapping Truss Screw M3x8 SWCH	2	
17	115-000-08	Transformer T200/20	1	
18	143-152-17	Tapping Truss Screw M3x8 SWCH	2	
19	143-085-34	Pan Screw (w/Spring Washer) M4x6 C3604 (EN CuZn39Pb3)	1	
20	009-000-01	Earth Terminal 2mm2x195L	1	
21	143-000-07	Pan Screw M5x132(20L) SWRM	4	
22	053-251-15	Motor Protector 220V-60HZ KA311-DAXL65 (T)	1	
23	143-136-15	Truss Screw M4x10 SWRM	2	
24	050-000-02	Motor Bracket ADC	1	
25	121-001-46	Packing d125.7xd134.7x6t NBR	1	Price on req.
26	056-000-39	Stator (w/M. Frame) 220V-60HZ	1	
27	071-000-01	Collar 37L SECC	1	
28	142-192-16	Wave Washer 6201(D=32,t=0.4) SK5	1	
29	052-100-15	Bearing 6201ZZC3	1	
30	055-002-87	055-002-87	1	
31	061-157-15	Bearing Collar d15.1xd21x1.6t Kaltgewalztes BlechC	1	
32	052-101-16	Bearing 6202ZZC3	1	
33	060-001-37	Bearing Housing ADC	1	
34	025-000-78	Mechanical Seal W-14HC SSIC	1	
35	030-000-01	Oil Lifter VANCS2 Type Resin	1	
36	121-001-12	Packing For VANCS2 NBR	1	
37	035-127-15	Oil Plug M10x15 SUS304 (EN X5CrNi18-10) Stainless Steel	1	
38	121-246-11	Packing (Oil Plug) d10.3xd16x2t PE	1	

50PUA2.75-53

Kontroll-Nr. --

2024-02-26 V.01.02.2023

Pos.no	Item no.	Description	Qty.	UP / EUR
39	140-000-03	Hex.Bolt (w/Plain Washer) M6x25 SUS304 (EN X5CrNi18-10)	4	
40	029-000-01	Oil Casing VANCS2 Type Resin	1	
41	143-000-26	Truss Screw (w/O-Ring) M6x20(P-5,NBR) SUS304 (EN X5CrNi18-10) Stainless Steel	4	
42	142-354-18	Conical Spring Washer d11.2xd22.5x0.8t SUS304 (EN X5CrNi18-10) Stainless Steel	1	
43	021-G29-22	Impeller (50Hz) Resin	1	
44	143-140-12	Truss Screw (w/Plain Washer) M6x12 SUS304 (EN X5CrNi18-10) Stainless Steel	1	
45	122-000-07	O-Ring 122xd3.0 NBR	1	
46	140-000-09	Hex.Bolt (w/Spring Washer) M8x45 SUS304 (EN X5CrNi18-10) Stainless Steel	2	
47	048-000-07	Screwed Flange 50mm(P.C.90)For Stainless Steel Pump (Resin)	1	
48	121-469-12	Packing d90xd58x2t NR	1	
49	020-000-05	Pump Casing (40/50)PU2.25/.4/.75 Resin	1	
	173-000-07	Packing & O-Ring Set	1	
	##whiteoilVG32	ml White Oil ISO VG32	250	Price on req.

--	--	--	--	--