

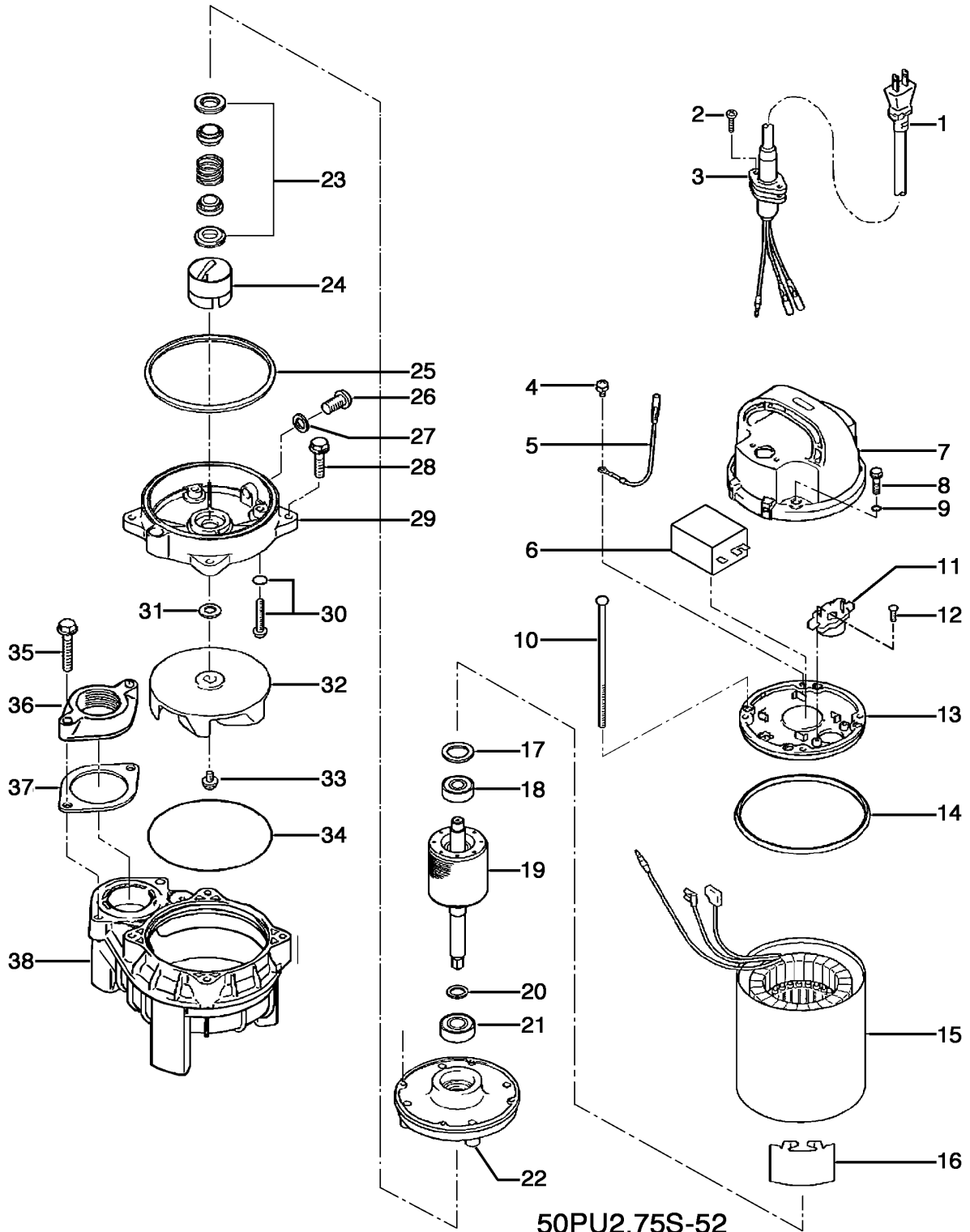
50PU2.75S-52

Kontroll-Nr. --

2019-01-11 V.20 / 1.11.2017

Pos.no	Item no.	Description	Quant.	UP
		Packing O-Ring Set	1	Price on req.
1	001-009-48	Cabletyre Cable Set (10m) 220/230/240V-50HZ(EUR) H07R-F3Cx1mm2 LBD(HAR)	1	Price on req.
2	143-146-18	Tapping Screw (w/Plain Washer) M5x20 SUS304 (EN X5CrNi18-10) Stainless Steel	2	Price on req.
3	003-190-10	Gland SUS316 (EN X5Cr-Ni-Mo17-12-2)	1	Price on req.
4	143-085-34	Pan Screw (w/Spring Washer) M4x6 C3604 (EN CuZn39Pb3)	1	Price on req.
5	009-190-18	Earth Terminal AWG16x150I	1	Price on req.
6	076-	Capacitor	1	Price on req.
7	051-000-02	Head Cover Resin	1	Price on req.
8	140-000-07	Hex.Bolt (w/Plain Washer) M6x30(22L) SUS304 (EN X5CrNi18-10) Stainless Steel	4	Price on req.
9	122-004-18	O-Ring P-6 NBR	4	Price on req.
10	143-000-05	Pan Screw M5x136(20L) SWRM	4	Price on req.
11	053-	Motor Protector	1	Price on req.
12	143-136-15	Truss Screw M4x10 SWRM	2	Price on req.
13	050-000-02	Motor Bracket ADC	1	Price on req.
14	121-471-17	Packing d126.6xd135.6x6t NR	1	Price on req.
15	056-	Stator	1	Price on req.
16	071-000-01	Collar 37L SECC	1	Price on req.
17	142-192-16	Wave Washer 6201(D=32,t=0.4) SK5	1	Price on req.
18	052-100-15	Bearing 6201ZZC3	1	Price on req.
19	055-000-22	Rotor w/Bearing	1	Price on req.
20	061-157-15	Bearing Collar d15.1xd21x1.6t Kaltgewalztes BlechC	1	Price on req.
21	052-152-12	Bearing 6302ZZC3	1	Price on req.
22	060-000-04	Bearing Housing ADC	1	Price on req.
23	025-000-80	Mechanical Seal W-14HC SSIC	1	Price on req.
24	030-000-01	Oil Lifter VANCS2 Type Resin	1	Price on req.
25	121-000-11	Packing For VANCS2 NBR	1	Price on req.
26	035-127-15	Oil Plug M10x15 SUS304 (EN X5CrNi18-10) Stainless Steel	1	Price on req.
27	121-246-11	Packing (Oil Plug) d10.3xd16x2t PE	1	Price on req.
28	140-000-03	Hex.Bolt (w/Plain Washer) M6x25 SUS304 (EN X5CrNi18-10)	4	Price on req.
29	029-000-01	Oil Casing VANCS2 Type Resin	1	Price on req.
30	143-000-26	Truss Screw (w/O-Ring) M6x20(P-5,NBR) SUS304 (EN X5CrNi18-10) Stainless Steel	4	Price on req.
31	142-354-18	Conical Spring Washer d11.2xd22.5x0.8t SUS304 (EN X5CrNi18-10) Stainless Steel	1	Price on req.
32	021-G29-22	Impeller (50HZ) 50Hz Resin	1	Price on req.
33	143-140-12	Truss Screw (w/Plain Washer) M6x12 SUS304 (EN X5CrNi18-10) Stainless Steel	1	Price on req.
34	122-000-07	O-Ring 122xd3.0 NBR	1	Price on req.
35	140-000-09	Hex.Bolt (w/Spring Washer) M8x45 SUS304 (EN X5CrNi18-10) Stainless Steel	2	Price on req.
36	048-000-07	Screwed Flange 50mm(P.C.90)For Stainless Steel Pump (Resin)	1	Price on req.
37	121-469-12	Packing d90xd58x2t NR	1	Price on req.
38	020-000-05	Pump Casing (40/50)PU2.25/.4/.75 Resin	1	Price on req.
	173-000-07	Packing & O-Ring Set	1	Price on req.
	##oilVG32	ml Turbine Oil ISO VG32	250	Price on req.

Exploded View 50PU2.75S-52



50PU2.75S-52