

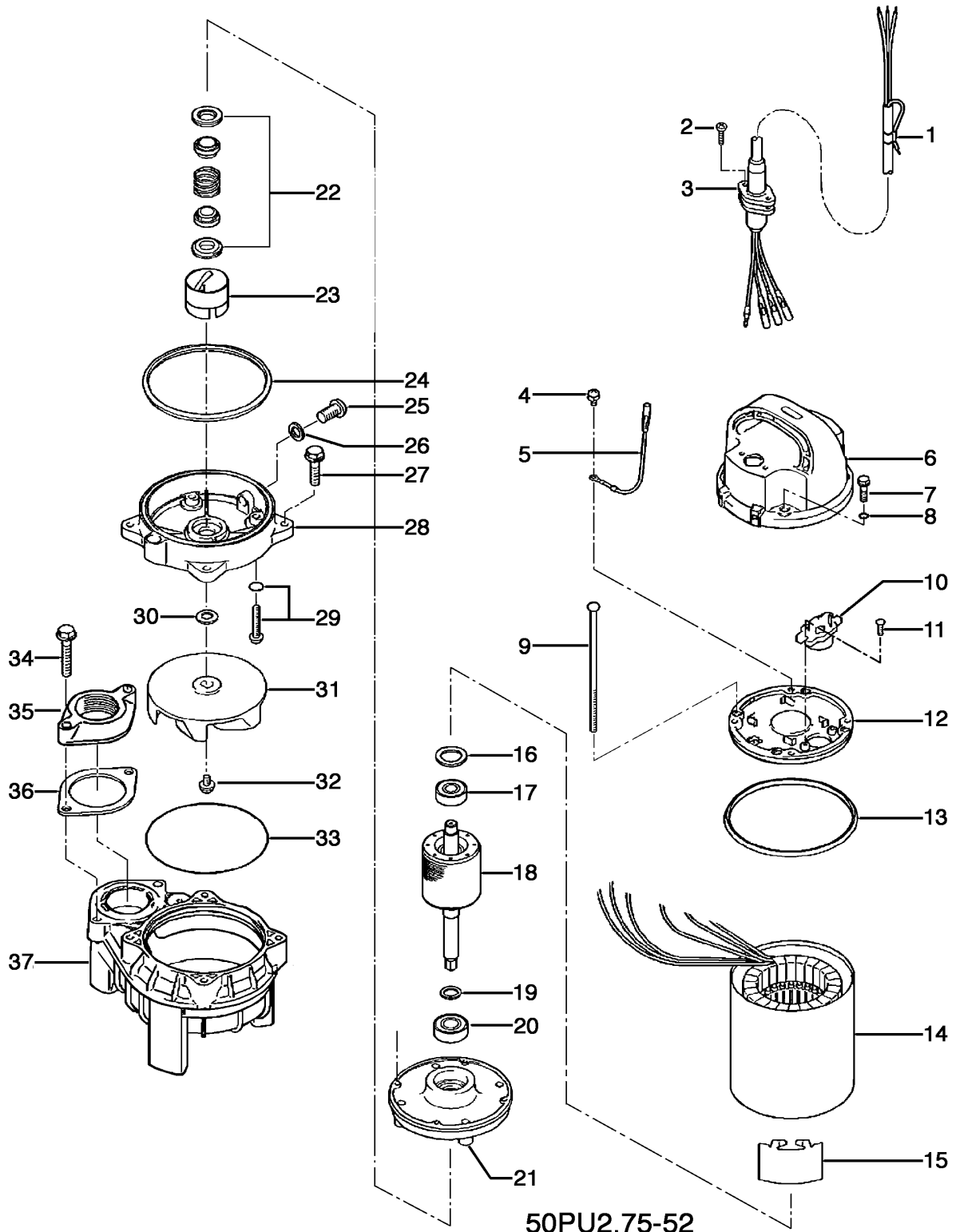
50PU2.75-52

Kontroll-Nr. --

2019-01-11 V.20 / 1.11.2017

| Pos.no | Item no. | Description | Quant. | UP |
|--------|------------|--|--------|---------------|
| | | Packing O-Ring Set | 1 | Price on req. |
| 1 | 001-TEG-31 | Cabtyre Cable Set (20m) H07RN-F4Cx1,5mm ² with gland | 1 | Price on req. |
| 1 | M01-TEG-31 | Cabtyre Cable Set (20m) NSSHÖU 4Cx1,5mm ² | 1 | Price on req. |
| 2 | 143-146-18 | Tapping Screw (w/Plain Washer) M5x20 SUS304 (EN X5CrNi18-10) Stainless Steel | 2 | Price on req. |
| 3 | 003-190-10 | Gland SUS316 (EN X5Cr-Ni-Mo17-12-2) | 1 | Price on req. |
| 4 | 143-085-34 | Pan Screw (w/Spring Washer) M4x6 C3604 (EN CuZn39Pb3) | 1 | Price on req. |
| 5 | 009-187-12 | Earth Terminal 1.25mm2x150L | 1 | Price on req. |
| 6 | 051-000-02 | Head Cover Resin | 1 | Price on req. |
| 7 | 140-000-07 | Hex.Bolt (w/Plain Washer) M6x30(22L) SUS304 (EN X5CrNi18-10) Stainless Steel | 4 | Price on req. |
| 8 | 122-004-18 | O-Ring P-6 NBR | 4 | Price on req. |
| 9 | 143-000-07 | Pan Screw M5x132(20L) SWRM | 4 | Price on req. |
| 10 | 053-251-15 | Motor Protector 220V-60HZ KA311-DAXL65 (T) | 1 | Price on req. |
| 11 | 143-136-15 | Truss Screw M4x10 SWRM | 2 | Price on req. |
| 12 | 050-000-02 | Motor Bracket ADC | 1 | Price on req. |
| 13 | 121-471-17 | Packing d126.6xd135.6x6t NR | 1 | Price on req. |
| 14 | 056-000-39 | Stator (w/M. Frame) 220V-60HZ | 1 | Price on req. |
| 15 | 071-000-01 | Collar 37L SECC | 1 | Price on req. |
| 16 | 142-192-16 | Wave Washer 6201(D=32,t=0.4) SK5 | 1 | Price on req. |
| 17 | 052-100-15 | Bearing 6201ZZC3 | 1 | Price on req. |
| 18 | 055-000-21 | Rotor w/Bearing | 1 | Price on req. |
| 19 | 061-157-15 | Bearing Collar d15.1xd21x1.6t Kaltgewalztes BlechC | 1 | Price on req. |
| 20 | 052-101-16 | Bearing 6202ZZC3 | 1 | Price on req. |
| 21 | 060-000-04 | Bearing Housing ADC | 1 | Price on req. |
| 22 | 025-000-80 | Mechanical Seal W-14HC SSIC | 1 | Price on req. |
| 23 | 030-000-01 | Oil Lifter VANCS2 Type Resin | 1 | Price on req. |
| 24 | 121-000-11 | Packing For VANCS2 NBR | 1 | Price on req. |
| 25 | 035-127-15 | Oil Plug M10x15 SUS304 (EN X5CrNi18-10) Stainless Steel | 1 | Price on req. |
| 26 | 121-246-11 | Packing (Oil Plug) d10.3xd16x2t PE | 1 | Price on req. |
| 27 | 140-000-03 | Hex.Bolt (w/Plain Washer) M6x25 SUS304 (EN X5CrNi18-10) | 4 | Price on req. |
| 28 | 029-000-01 | Oil Casing VANCS2 Type Resin | 1 | Price on req. |
| 29 | 143-000-26 | Truss Screw (w/O-Ring) M6x20(P-5,NBR) SUS304 (EN X5CrNi18-10) Stainless Steel | 4 | Price on req. |
| 30 | 142-354-18 | Conical Spring Washer d11.2xd22.5x0.8t SUS304 (EN X5CrNi18-10) Stainless Steel | 1 | Price on req. |
| 31 | 021-G29-22 | Impeller (50HZ) 50Hz Resin | 1 | Price on req. |
| 32 | 143-140-12 | Truss Screw (w/Plain Washer) M6x12 SUS304 (EN X5CrNi18-10) Stainless Steel | 1 | Price on req. |
| 33 | 122-000-07 | O-Ring 122xd3.0 NBR | 1 | Price on req. |
| 34 | 140-000-09 | Hex.Bolt (w/Spring Washer) M8x45 SUS304 (EN X5CrNi18-10) Stainless Steel | 2 | Price on req. |
| 35 | 048-000-07 | Screwed Flange 50mm(P.C.90)For Stainless Steel Pump (Resin) | 1 | Price on req. |
| 36 | 121-469-12 | Packing d90xd58x2t NR | 1 | Price on req. |
| 37 | 020-000-05 | Pump Casing (40/50)PU2.25/.4/.75 Resin | 1 | Price on req. |
| | 173-000-07 | Packing & O-Ring Set | 1 | Price on req. |
| | ##oilVG32 | ml Turbine Oil ISO VG32 | 250 | Price on req. |

Exploded View 50PU2.75-52



50PU2.75-52