

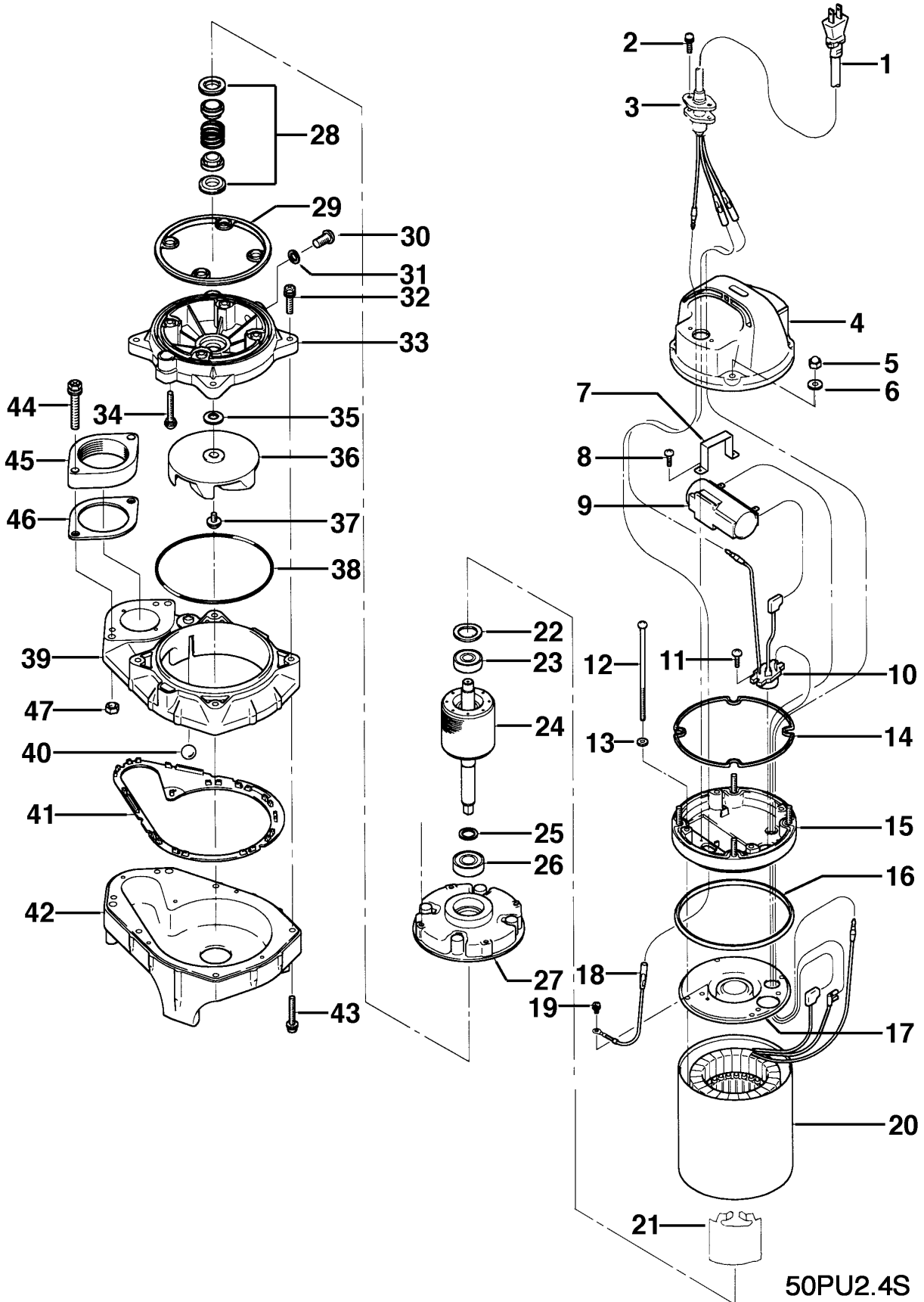
50PU2.4S

Kontroll-Nr. --

2019-01-10 V.20 / 1.11.2017

Pos.no	Item no.	Description	Quant.	UP
		Packing O-Ring Set	1	Price on req.
1	001-009-48	Cabletyre Cable Set (10m) 220/230/240V-50HZ(EUR) H07R-F3Cx1mm2 LBD(HAR)	1	Price on req.
2	143-146-18	Tapping Screw (w/Plain Washer) M5x20 SUS304 (EN X5CrNi18-10) Stainless Steel	2	Price on req.
3	003-190-10	Gland SUS316 (EN X5CrNi-Mo17-12-2)	1	Price on req.
4	051-224-13	Motor Head Cover Resin	1	Price on req.
5	141-029-18	Hex.Cap Nut M6 SUS304 (EN X5CrNi18-10) Stainless Steel	4	Price on req.
6	142-126-19	Plain Washer M6 SUS304 (EN X5CrNi18-10) Stainless Steel	4	Price on req.
7	127-200-11	Capacitor Fixing Plate VANCS SECC	1	Price on req.
8	143-153-18	Tapping Truss Screw M3.5x8 SWCH	2	Price on req.
9	076-137-15	Capacitor 220V-60HZ SH-JPX.12MFD-450VAC	1	Price on req.
10	053-451-17	Motor Protector 200/220V-60HZ KA142-LPXL06 (T)	1	Price on req.
11	143-138-17	Cross-Recessed Pan Tapping Screw M4x12 (SWCH)	2	Price on req.
12	143-149-11	Pan Screw M5x153(20) SWRM	4	Price on req.
13	142-112-25	Plain Washer M5 SPC	4	Price on req.
14	121-472-18	Packing P.C.125xd130x2.3t NR	1	Price on req.
15	082-102-10	Head Cover Spacer Resin	1	Price on req.
16	121-471-17	Packing d126.6xd135.6x6t NR	1	Price on req.
17	050-411-16	Motor Bracket SPC	1	Price on req.
18	009-187-12	Earth Terminal 1.25mm2x150L	1	Price on req.
19	143-085-34	Pan Screw (w/Spring Washer) M4x6 C3604 (EN CuZn39Pb3)	1	Price on req.
20	056-752-10	Stator 220V-60HZ	1	Price on req.
21	071-325-17	C 54I SECC	1	Price on req.
22	142-192-16	Wave Washer 6201(D=32,t=0.4) SK5	1	Price on req.
23	052-100-15	Bearing 6201ZZC3	1	Price on req.
24	055-691-17	Rotor w/Bearing	1	Price on req.
25	061-170-14	Bearing Collar d35.1xd46x2t SPCC	1	Price on req.
26	052-101-16	Bearing 6202ZZC3	1	Price on req.
27	060-400-13	Bearing Housing ADC	1	Price on req.
28	025-000-80	Mechanical Seal W-14HC SSIC	1	Price on req.
29	121-464-17	Packing VANCS NBR	1	Price on req.
30	035-127-15	Oil Plug M10x15 SUS304 (EN X5CrNi18-10) Stainless Steel	1	Price on req.
31	121-246-11	Packing (Oil Plug) d10.3xd16x2t PE	1	Price on req.
32	140-435-18	Hex.Bolt (w/Plain Washer) M6x30 SUS304 (EN X5CrNi18-10) Stainless Steel	4	Price on req.
33	029-300-15	Oil Casing VANCS Resin	1	Price on req.
34	143-139-18	Truss Screw (w/Polyethylene Washer) M6x40 SUS304 (EN X5CrNi18-10) Stainless Steel	4	Price on req.
35	142-354-18	Conical Spring Washer d11.2xd22.5x0.8t SUS304 (EN X5CrNi18-10) Stainless Steel	1	Price on req.
36	021-G28-21	Impeller Resin PPO+GF20	1	Price on req.
37	143-140-12	Truss Screw (w/Plain Washer) M6x12 SUS304 (EN X5CrNi18-10) Stainless Steel	1	Price on req.
38	122-452-15	O-Ring 130xd2.8 NBR	1	Price on req.
39	020-908-12	Pump Casing (Upper) PU/PN/PSH Resin	1	Price on req.
40	203-065-11	Valve d17 Glass	1	Price on req.
41	121-465-18	Packing VANCS (NBR)	1	Price on req.
42	020-921-11	Pump Casing (Lower) PU Resin	1	Price on req.
43	143-147-19	Pan Screw (w/Plain Washer) M6x40 SUS304 (EN X5CrNi18-10) Stainless Steel	6	Price on req.
44	140-436-19	Hex.Bolt (w/Plain Washer) M8x55SUS304 (EN X5CrNi18-10) Stainless Steel	2	Price on req.
45	048-000-07	Screwed Flange 50mm(P.C.90)For Stainless Steel Pump (Resin)	1	Price on req.
46	121-469-12	Packing d90xd58x2t NR	1	Price on req.
47	141-121-11	Hex.Nut M8(B=12) SUS304 (EN X5CrNi18-10) Stainless Steel	2	Price on req.
	173-500-17	Packing & O-Ring Set	1	Price on req.
	##oilVG32	ml Turbine Oil ISO VG32	250	Price on req.

Exploded View 50PU2.4S



50PU2.4S