

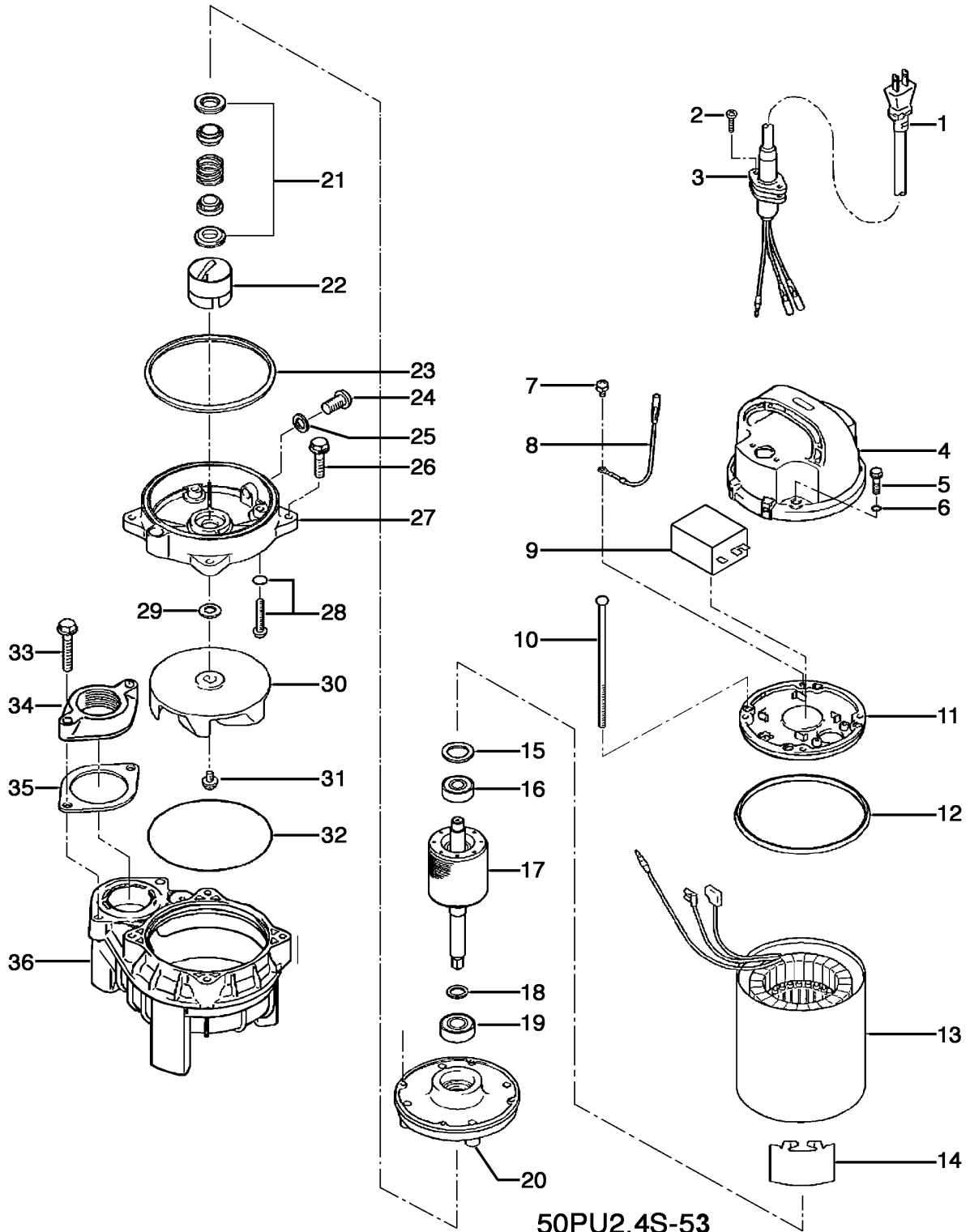
50PU2.4S-53

Kontroll-Nr. --

2019-01-22 V.20 / 1.11.2017

Pos.no	Item no.	Description	Quant.	UP
		Packing O-Ring Set	1	Price on req.
1	001-009-48	Cabletyre Cable Set (10m) 220/230/240V-50HZ(EUR) H07R-F3Cx1mm2 LBD(HAR)	1	Price on req.
2	143-000-33	Hex.Tapping ScrewM5x20 EN X5CrNi18-10	2	Price on req.
3	003-190-10	Gland SUS316 (EN X5Cr-Ni-Mo17-12-2)	1	Price on req.
4	051-000-02	Head Cover Resin	1	Price on req.
5	140-000-07	Hex.Bolt (w/Plain Washer) M6x30(22L) SUS304 (EN X5CrNi18-10) Stainless Steel	4	Price on req.
6	122-004-18	O-Ring P-6 NBR	4	Price on req.
7	143-085-34	Pan Screw (w/Spring Washer) M4x6 C3604 (EN CuZn39Pb3)	1	Price on req.
8	009-187-12	Earth Terminal 1.25mm2x150L	1	Price on req.
9	076-000-08	Capacitor 220V-60HZ 12MF.440VAC	1	Price on req.
10	143-000-04	Pan Screw M5x118(20L) SWRM	4	Price on req.
11	050-000-02	Motor Bracket ADC	1	Price on req.
12	121-001-46	Packing d125.7xd134.7x6t NBR	1	Price on req.
13	056-007-93	Stator w/Minature Protector w/Frame	1	Price on req.
14	071-000-01	Collar 37L SECC	1	Price on req.
15	142-000-91	Wave Washer 6201(D=30.6,t=0.35) SK5	1	Price on req.
16	052-100-15	Bearing 6201ZZC3	1	Price on req.
17	055-	Rotor and Shaft	1	Price on req.
18	061-157-15	Bearing Collar d15.1xd21x1.6t Kaltgewalztes BlechC	1	Price on req.
19	052-101-16	Bearing 6202ZZC3	1	Price on req.
20	060-001-36	Bearing Housing ADC	1	Price on req.
21	025-000-80	Mechanical Seal W-14HC SSIC	1	Price on req.
22	030-000-01	Oil Lifter VANCS2 Type Resin	1	Price on req.
23	121-000-11	Packing For VANCS2 NBR	1	Price on req.
24	035-127-15	Oil Plug M10x15 SUS304 (EN X5CrNi18-10) Stainless Steel	1	Price on req.
25	025-000-80	Mechanical Seal W-14HC SSIC	1	Price on req.
26	140-000-03	Hex.Bolt (w/Plain Washer) M6x25 SUS304 (EN X5CrNi18-10)	4	Price on req.
27	029-000-01	Oil Casing VANCS2 Type Resin	1	Price on req.
28	143-000-26	Truss Screw (w/O-Ring) M6x20(P-5,NBR) SUS304 (EN X5CrNi18-10) Stainless Steel	4	Price on req.
29	142-354-18	Conical Spring Washer d11.2xd22.5x0.8t SUS304 (EN X5CrNi18-10) Stainless Steel	1	Price on req.
30	021-G28-21	Impeller Resin PPO+GF20	1	Price on req.
31	143-140-12	Truss Screw (w/Plain Washer) M6x12 SUS304 (EN X5CrNi18-10) Stainless Steel	1	Price on req.
32	122-000-07	O-Ring 122xd3.0 NBR	1	Price on req.
33	140-000-09	Hex.Bolt (w/Spring Washer) M8x45 SUS304 (EN X5CrNi18-10) Stainless Steel	2	Price on req.
34	048-000-07	Screwed Flange 50mm(P.C.90)For Stainless Steel Pump (Resin)	1	Price on req.
35	121-469-12	Packing d90xd58x2t NR	1	Price on req.
36	020-000-05	Pump Casing (40/50)PU2.25/.4/.75 Resin	1	Price on req.
	173-003-14	Packing & O-Ring Set	1	Price on req.
	##whiteoilVG32	ml White Oil ISO VG32	240	Price on req.

Exploded View 50PU2.4S-53



50PU2.4S-53