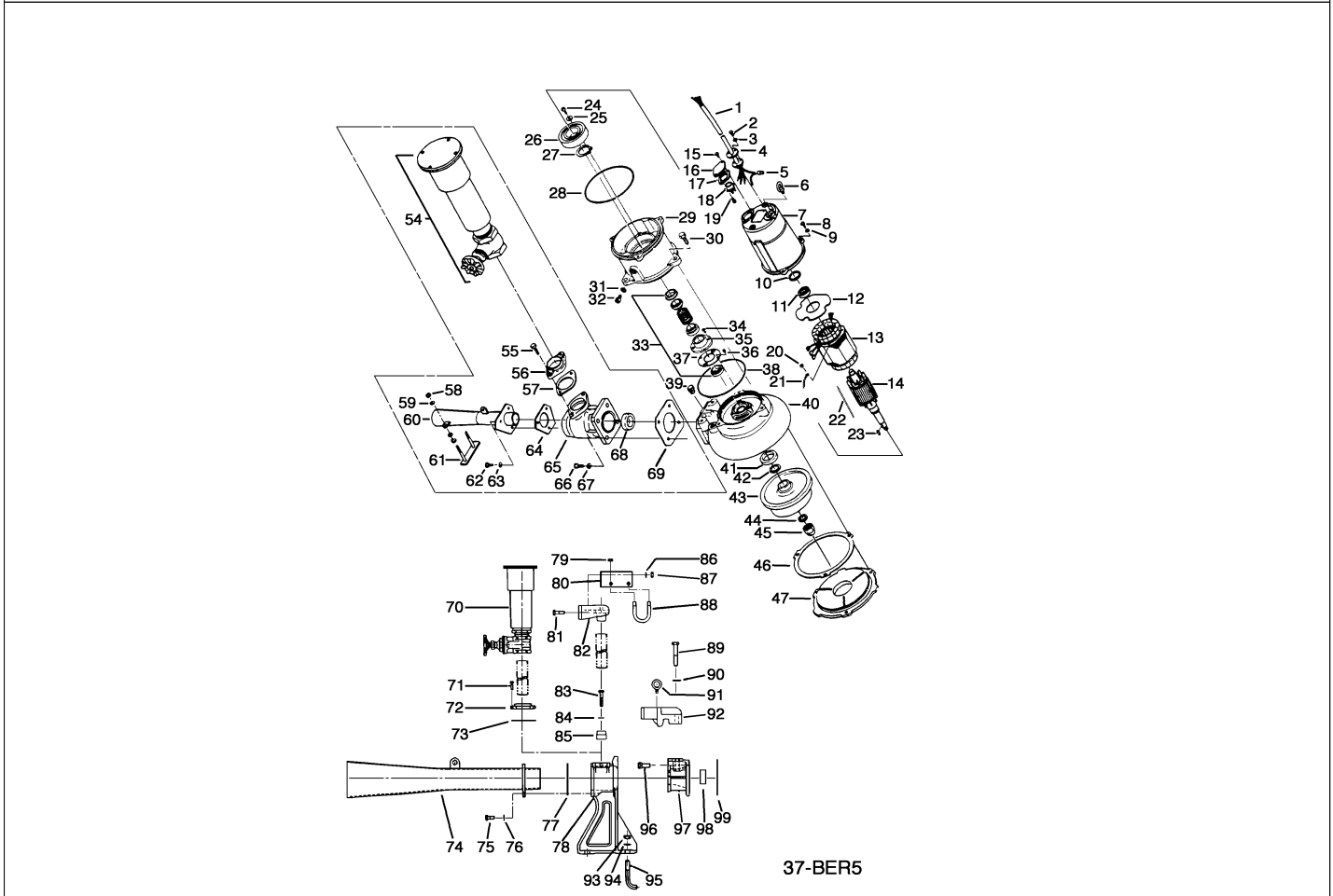


37-BER5

Kontroll-Nr. --

2024-02-21 V.01.02.2023

Pos.no	Item no.	Description	Qty.	UP / EUR
--------	----------	-------------	------	----------


37-BER5

1.1.1	173-446-14	Packing & O-Ring Set	1	
1	M01-TEG-21	Cabletyre Cable Set (10m) NSSHÖU 4Cx1,5mm ²	1	
2	140-021-17	Hex.Bolt M5x20 SUS304 (EN X5CrNi18-10)	3	
3	142-422-18	Seal Washer PM-5 SUS+NBR	3	
4	003-111-20	Gland SUS304 (EN X5CrNi18-10)	1	
5	009-275-18	Compression type Terminal TGNB-5.5(Insulated) CU	4	
6	072-100-20	Eye Bolt M10 SUS304	2	
7	064-509-15	Motor Frame Grey Iron Casting	1	
8	140-055-10	Hex.Bolt M8x25 SUS304	3	
9	142-163-21	Spring Washer M8 SUS316 (DIN 1.4401) Stainless Steel	3	
10	142-196-10	Wave Washer 6205/6304 SK5	1	
11	052-188-17	Bearing (w/O-ring) AC-6304ZCC3	1	
12	058-000-46	Lead Wire Protection Plate d66xd148x1.6t Bakelite	1	
13	056-596-14	Stator 220V-60HZ(TWN)	1	
14	055-609-18	Rotor	1	
15	140-052-17	Hex.Bolt M8x16 SUS304	2	
16	127-107-17	Protector Fixing Plate 22/37-BE2 SUS304 (EN X5CrNi18-10)	1	
17	121-446-13	Packing 22/37-BE2 NBR	1	
18	053-254-18	Motor Protector 380/400/415V-50HZ KA313-GCXL103 (H.C)	1	
19	143-087-23	Pan Screw (w/Spring Washer) M4x10 SWRM	2	
20	141-004-33	Hex.Nut M6 SWRM	1	
21	009-159-15	Terminal R-2-6 CU	1	
22	129-003-18	Stopper M6x160(11/20) SS	1	
23	147-066-15	Impeller Key 10x8x22L SUS420 (EN X30Cr13)	1	
24	143-042-13	Pan Screw M6x10 SWRM	3	
25	062-196-19	Bearing Fixing Washer d8xd20.5x2.3t SS	3	
26	052-001-08	Bearing 6309ZCC3	1	
27	146-027-11	Retaining Ring C45 SK5	1	
28	122-333-19	O-Ring 170xd3.1 NBR	1	
29	060-375-18	Bearing Housing Grey Iron Casting	1	
30	140-098-15	Hex.Bolt M12x35 SUS304	3	
31	121-247-12	Packing d12.3xd18x2t PE	1	
32	035-113-18	Oil Plug M12x14 SUS304 (EN X5CrNi18-10) Stainless Steel	1	Price on req.
33	025-001-11	Mechanical Seal H-35A SIC+CCBN	1	
34	143-070-23	Pan Screw M5x6 SWRM	2	
35	030-156-18	Oil Lifter H-35(A)(T) Resin	1	
36	143-070-23	Pan Screw M5x6 SWRM	3	
37	030-150-12	Seal Stopper H-35(A)(T) SPCC	1	
38	122-246-14	O-Ring (Brg.Housing/O.Casing) 180xd3.1 NBR	1	
39	046-107-13	Air Release Valve PT-1/2 Nylon	1	

37-BER5

Kontroll-Nr. --

2024-02-21 V.01.02.2023

Pos.no	Item no.	Description	Qty.	UP / EUR
40	020-527-13	Pump Casing 37-BE2/CE2 FC	1	
41	026-143-19	Oil Seal TC-507212 NBR	1	
42	040-113-14	Impeller Shim d32.5xd48x0.3t SUS304 (EN X5CrNi18-10)	1	
43	021-008-02	Impeller (50Hz)100BX43.8-51 FC	1	
44	142-170-18	Spring Washer M24 SUS304 (EN X5CrNi18-10) Stainless	1	
46	120-104-13	Packing d230.5xd258x0.3t M-Sheet	1	
47	022-001-70	Suction Cover 22/37-BER2 FC	1	
48	142-129-12	Plain Washer M12 SUS304	3	
49	144-000-43	Stud BoltM12x196(18/25) EN X6Cr13	3	
50	023-269-13	Strainer 22/37-BER2 SPC	1	
51	049-134-18	Bottom Plate B3 SPC	1	
52	142-129-12	Plain Washer M12 SUS304	3	
53	141-007-10	Hex.Nut M12 SUS304	3	
54	215-106-12	Silencer & Valve Set 22/55-TR Type(PF-2)	1	
55	140-057-12	Hex.Bolt M8x30 SUS304 (EN X5CrNi18-10) Stainless Steel	2	
56	048-263-14	Screwed Flange 50mm(P.C.90) FCMB	1	
57	121-469-12	Packing d90xd58x2t NR	1	
58	141-007-10	Hex.Nut M12 SUS304	4	
59	142-129-12	Plain Washer M12 SUS304	4	
60	153-000-03	Diffuser 22/37-BER2 SS+SGP	1	Price on req.
61	154-110-17	Diffuser Base 22/55-BER2 SS	1	
62	140-097-14	Hex.Bolt M12x30 SUS304	3	
63	142-129-12	Plain Washer M12 SUS304	3	
64	121-545-13	Packing TOS-UR(1.5-5.5KW) NBR	1	
65	151-109-14	Suction Casing 22/37-BER2 FC	1	
66	140-123-10	Hex.Bolt M16x35 SUS304 (EN X5Cr18-10)	4	
67	142-166-11	Spring Washer M16 SUS304	4	
68	045-000-02	Nozzle Ring ø43xø60.5x24l SUS304 (EN X5CrNi18-10) Stainless Steel	1	
69	121-152-19	Packing 145mm2(P.C.145) NBR	1	
70	215-106-12	Silencer & Valve Set 22/55-TR Type(PF-2)	1	
71	140-057-12	Hex.Bolt M8x30 SUS304 (EN X5CrNi18-10) Stainless Steel	2	
72	048-263-14	Screwed Flange 50mm(P.C.90) FCMB	1	
73	121-469-12	Packing d90xd58x2t NR	1	
74	153-000-03	Diffuser 22/37-BER2 SS+SGP	1	Price on req.
75	140-097-14	Hex.Bolt M12x30 SUS304	3	
76	142-129-12	Plain Washer M12 SUS304	3	
77	121-192-11	Packing P.C. 128xd90 NBR	1	
78	151-109-14	Suction Casing 22/37-BER2 FC	1	
79	141-006-19	Hex.Nut M10 SUS304 (EN X5CrNi18-10)	2	
80	127-103-13	Air-Inlet Pipe Support TOS-22/55BER2 SS	1	
81	140-099-16	Hex.Bolt M12x40 SUS304	2	
82	094-105-10	Guide Support TOS-100 FCD	1	
83	140-103-14	Hex.Bolt M12x60 SUS304 (EN X5CrNi18-10) Stainless Steel	1	
84	142-165-10	Spring Washer M12 SUS304 (EN X5CrNi18-10) Stainless Steel	1	Price on req.
85	096-102-13	Guide Connector 51mm SS	1	
86	142-165-10	Spring Washer M12 SUS304 (EN X5CrNi18-10) Stainless Steel	1	Price on req.
87	141-007-10	Hex.Nut M12 SUS304	1	
88	144-325-16	U-bolt #50,M10,B SS	1	
89	140-134-14	Hex.Bolt M16x90 SUS304 (EN X5CrNi18-10) Stainless Steel	1	
90	142-166-11	Spring Washer M16 SUS304	1	
91	072-100-17	Eye Bolt M10 SS	1	
92	093-110-15	Guide Hook TOS-100 FCD	1	
93	141-008-37	Hex.Nut M16 S35C	1	
94	142-130-29	Plain Washer M16 SPC	1	
95	144-167-18	Foundation Bolt M16x120 SS	1	
96	140-316-12	Hex. Socket Cap Bolt M16x35 SUS304 (EN X5CrNi18-10) Stainless Steel	1	
97	152-109-17	Nozzle (Guide Rail Type) TOS-22/37BER2 FC	1	
98	045-000-02	Nozzle Ring ø43xø60.5x24l SUS304 (EN X5CrNi18-10) Stainless Steel	1	
99	121-152-19	Packing 145mm2(P.C.145) NBR	1	
	173-446-14	Packing & O-Ring Set	1	
	##oilVG32	ml Turbine Oil ISO VG32	1300	Price on req.
	##50A-SGPW	Guide Pipe, Diameter 50mm (not included)	2	Price on req.