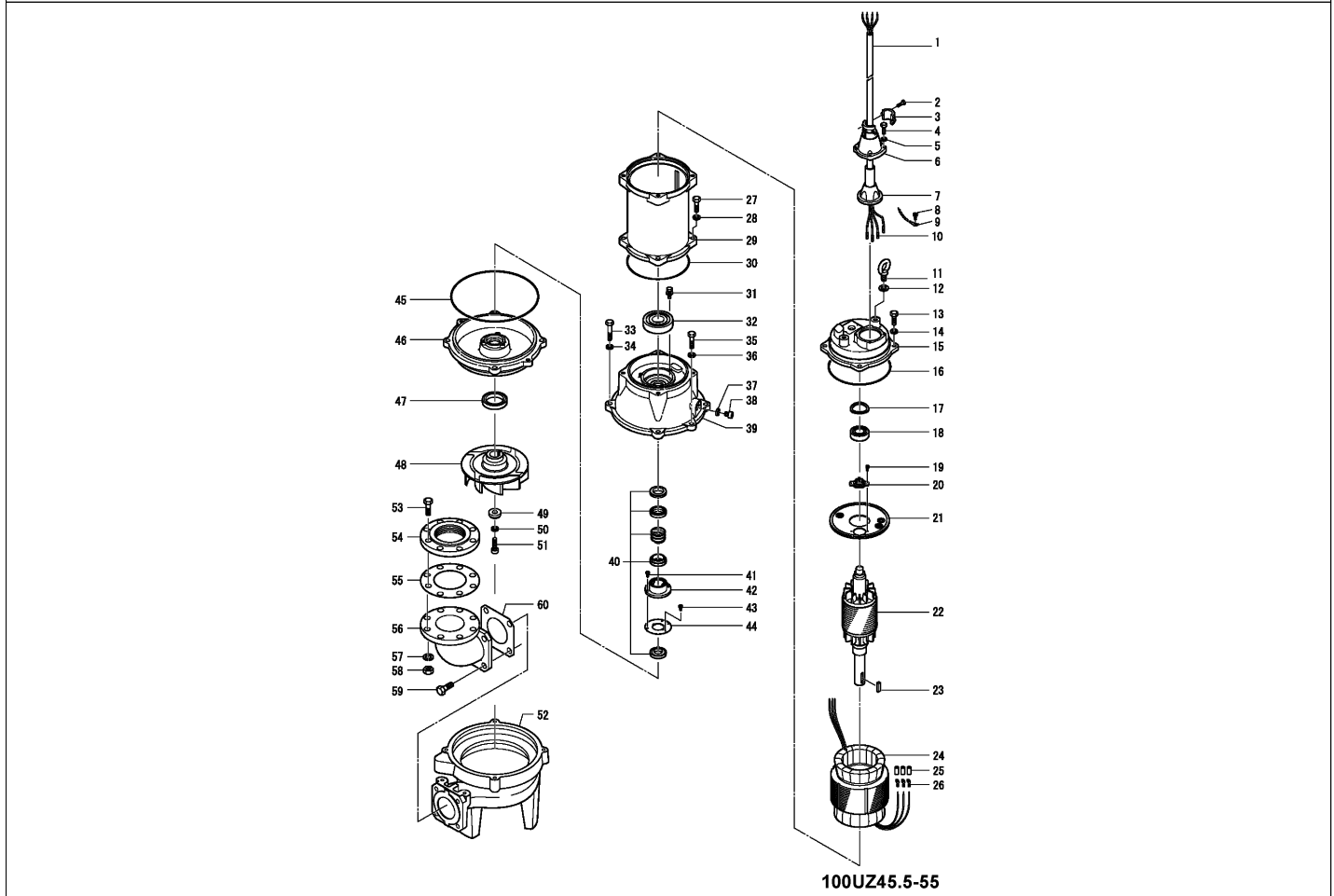


100UZ45.5-55

Kontroll-Nr. --

2024-03-28 V.01.02.2023

Pos.no	Item no.	Description	Qty.	UP / EUR
--------	----------	-------------	------	----------



Pos.no	Item no.	Description	Qty.	UP / EUR
1.1.1	173-002-99	Packing & O-Ring Set	1	
1	001-TEG-09	Cabletyre Cable Set (20m) H07RN-F4Cx2,5mm ² without stuffing box	1	
1	M01-TEG-09	Cabletyre Cable Set (20m) NSSHÖU 4Cx2,5mm ²	1	
2	140-035-14	Hex.Bolt M6x20 SUS304 (EN X5CrNi18-10) Stainless	2	
3	070-107-18	Cable Clamp FC	1	
4	140-056-11	Hex.Bolt M8x30 SUS304 (EN X5CrNi18-10) Stainless	4	
5	142-163-18	Spring Washer M8 SUS304	4	
6	006-126-14	Stuffing Box No.2 FC	1	
7	008-136-13	Mould Cover KR2-1 CR	1	
8	143-085-21	Pan Screw (w/Spring Washer) M4x6 SWRM	1	
9	009-294-13	Earth Terminal 3.5mmx170L	1	
10	009-275-18	Compression type Terminal TGNB-5.5(Insulated) CU	4	
11	072-102-22	Eyebolt M12	2	
12	142-397-13	Washer d13xd24x0.1t SUS304 (EN X5CrNi18-10) Stainless Steel	1	
	142-398-14	Washer d13xd24x0.3t SUS304 (EN X5CrNi18-10) Stainless Steel	1	
13	140-098-15	Hex.Bolt M12x35 SUS304	4	
14	142-165-10	Spring Washer M12 SUS304 (EN X5CrNi18-10) Stainless Steel	4	Price on req.
15	050-001-21	Motor Bracket FC200	1	
16	122-173-19	O-Ring V-225 NBR	1	
17	142-198-12	Wave Washer 6306 SK5	1	Price on req.
18	052-000-25	Bearing AC-6306ZZC3	1	
19	143-126-25	Pan Screw (w/Spring Washer/Plain Washer) M4x12 SWRM	2	
20	053-192-17	Motor Protector 220V-60HZ KA314-HKXL00 (B.C)	1	
21	058-000-09	Lead Wire Protection Plate d80xd224x1.6t (SPHC)	1	
22	055-000-08	Rotor	1	
23	147-163-13	Impeller Key 10x8x32L SUS420 (EN X20Cr13) Stainless Steel	1	
24	056-000-02	Stator 380/400/415V-50Hz	1	
	181-000-03	Cable Tie T50S,158Lx4.7Bx35D Nylon	2	Price on req.
25	002-000-83	Cable Protection Tube NFG-1A,d7 (V/m)	1	Price on req.
26	009-000-31	Terminal R-5.5-54 CU	3	
27	140-100-11	Hex.Bolt M12x45 SUS304 (EN X5CrNi18-10) Stainless Steel	4	Price on req.
28	142-165-10	Spring Washer M12 SUS304 (EN X5CrNi18-10) Stainless Steel	4	Price on req.
29	064-000-71	Motor Frame FC	1	
30	122-173-19	O-Ring V-225 NBR	1	
31	140-000-06	Hex.Bolt (w/Spring Washer/Plain Washer) M6x12 SWCH	3	
32	052-001-08	Bearing 6309ZZC3	1	
33	140-104-15	Hex.Bolt M12x65 SUS304 (EN X5CrNi18-10) Stainless Steel	4	
34	142-165-10	Spring Washer M12 SUS304 (EN X5CrNi18-10) Stainless Steel	4	Price on req.
35	140-099-16	Hex.Bolt M12x40 SUS304	2	
36	142-165-10	Spring Washer M12 SUS304 (EN X5CrNi18-10) Stainless Steel	2	Price on req.

100UZ45.5-55

Kontroll-Nr. --

2024-03-28 V.01.02.2023

Pos.no	Item no.	Description	Qty.	UP / EUR
37	121-247-12	Packing d12.3xd18x2t PE	2	
38	035-113-18	Oil Plug M12x14 SUS304 (EN X5CrNi18-10) Stainless Steel	2	Price on req.
39	060-002-31	Bearing Housing FC200 (EN-GJL-200)	1	
40	025-001-11	Mechanical Seal H-35A SIC+CCBN	1	
41	143-070-23	Pan Screw M5x6 SWRM	2	
42	030-156-18	Oil Lifter H-35(A)(T) Resin	1	
43	143-070-10	Pan Screw M5x6 SWRM	3	
44	030-150-12	Seal Stopper H-35(A)(T) SPCC	1	
45	122-159-19	O-Ring (Brq.Housing/O.Casing) G-280(279.3xd5.7) NBR	1	
46	029-187-14	Oil Casing 100-5.5/7.5-4B2 FC	1	
47	026-115-12	Oil Seal TC-608212 NBR	1	
48	021-M88-11	Impeller (50Hz) FC	1	
49	142-366-13	Impeller Fixing Washer d20xd40x16l SUS304 (EN X5CrNi18-10)	1	
50	142-000-22	Spring Washer M12(CP) SUS304 (EN X5CrNi18-10) Stainless	1	
51	140-303-16	Hex. Socket Cap Bolt M12x40 SUS304 (EN X5CrNi18-10) Stainless Steel	1	
52	020-002-36	Pump Casing 100US45.5-50/60 FC	1	
53	140-000-56	Hex.Bolt M16x75 SWRM	8	
54	048-000-40	Screwed FlangeJIS10Kx100mm FC	1	
55	121-106-34	Packing JIS10Kx100mm NR	1	
56	037-000-32	Discharge Bend(For 100mm)100x100mm(S-4) FC	1	
57	142-166-37	Spring Washer M16 SWRH	8	
58	141-008-11	Hex.Nut M16 SUS304 (EN X5CrNi18-10)	8	
59	140-124-11	Hex.Bolt M16x40 SUS304 (EN X5Cr18-10)	4	
60	121-153-10	Packing 160mm2(P.C.165) NBR	1	
	173-002-99	Packing & O-Ring Set	1	
	##oilVG32	ml Turbine Oil ISO VG32	4300	Price on req.