

**100C411**

Kontroll-Nr. --

2018-10-17 V.18 / 1.10.2015

100C411			
Item	Item no.	Description	Quant.
1	009-115-19	Connector PC-4020F	1
2	009-114-18	Connector PC-4020M	1
3	140-018-11	Hex.Bolt M5x15 SUS304 (EN X5CrNi18-10) Stainless Steel	3
4	142-422-18	Seal Washer PM5 SUS+NBR	3
5	003-111-20	Gland SUS304 (EN X5CrNi18-10)	1
6	T01-TEG-99	Cable Set (10m) H07RN-F 3Cx1,5mm2	1
7	009-114-18	Connector PC-4020M	2
8	009-115-19	Connector PC-4020F	2
9	002-128-14	Heat Shrink Tube (Sold per meter) EVA(d10x1t) (Vm)	1
10	009-131-11	Terminal R-5,5-6 CU	7
11	140-055-10	Hex.Bolt M8x25 SUS304 (EN X5CrNi18-10)	8
12	142-163-21	Spring Washer M8 SUS316 (DIN 1.4401) Stainless Steel	8
13	070-107-18	Cable Clamp FC	2
14	140-035-27	Hex.Bolt M6x20 SUS304 (EN X5CrNi18-10) Stainless Steel	4
15	006-126-14	Stuffing Box No.2 FC	2
16	001-TEG-09	Cable Set (20m) H07RN-F4Cx2,5mm2 without stuffing box	1
16	MD1-TEG-09	Cable Set (20m) NSSHÖU 4Cx2,5mm2	1
17	008-154-17	Mould Cover KR2-10 CR	1
18	009-101-12	Terminal (C/W Screw) d12x(d6,6xd6,6)x25l BSBM	1
19	009-123-10	Terminal P-5,5 CU	1
20	002-129-15	Heat Shrink Tube (Sold per meter) EVA(d14x1t) (Vm)	1
21	002-132-11	Heat Shrink Tube (Sold per meter) A4(d17x0,3t) (Vm)	1
22	001-TEG-09	Cable Set (20m) H07RN-F4Cx2,5mm2 without stuffing box	1
22	MD1-TEG-09	Cable Set (20m) NSSHÖU 4Cx2,5mm2	1
23	008-142-12	Mould Cover	1
24	143-085-34	Pan Screw (w/Spring Washer) M4x6 C3604 (EN CuZn39Pb3)	1
25	009-122-19	Terminal R-3,5-4 CU	1
26	140-098-15	Hex.Bolt M12x35 SUS304 (EN X5Cr18-10)	1
27	142-165-10	Spring Washer M12 SUS304 (EN X5Cr18-10)	1
28	050-437-18	Motor Bracket FC	1
29	072-107-14	Eye Bolt M16 SS	1
30	122-173-19	O-Ring V-225 NBR	1
31	142-198-12	Wave Washer #6306 SK-5	1
32	122-245-13	O-Ring 71,4xd3,1 NBR	1
33	052-109-14	Bearing 6306ZZC3	1
34	058-000-09	Lead Wire Protection Plate d80xd224x1,6t (SPHC)	1
35	055-746-18	Rotor	1
36	147-005-16	Impeller Key 12x8x40 Stainless Steel	1
37	053-310-13	Motor Protector 9700K-76-215 (H)	1
38	056-B20-13	Stator 400/415V, 50Hz	1
39	064-506-12	Motor Frame FC	1
40	140-100-11	Hex.Bolt M12x45 SUS304 (EN X5Cr18-10)	1
41	142-165-10	Spring Washer M12 SUS304 (EN X5Cr18-10)	1
42	122-006-10	O-Ring P-8 NBR	1
43	144-550-12	Stator Set Bolt M8x12,5 SUS304 (EN X5CrNi18-10) Stainless Steel	1
44	122-173-19	O-Ring V-225 NBR	1
45	140-032-37	Hex.Bolt M6x15 SWRM	1
46	062-224-17	Bearing Fixing Plate d98xd140x4,5t SS	1
47	052-141-18	Bearing 6310ZZD2C3	1
48	142-393-19	Bearing Washer AW10 Stainless Steel	1
49	141-129-19	Bearing Nut AN10 SUS410 (EN X12Cr13) Stainless Steel	1
50	060-431-13	Bearing Housing FC	1
51	121-247-12	Packing (Oil Plug) d12,3xd18x2t PE	2
52	035-11-318	Oil Plug M12x14 SUS304 (EN X5CrNi18-10) Stainless Steel	2
53	140-099-16	Hex.Bolt M12x40 SUS304 (EN X5CrNi18-10)	2
54	142-165-10	Spring Washer M12 SUS304 (EN X5Cr18-10)	2
55	140-104-15	Hex.Bolt M12x65 SUS304 (EN X5CrNi18-10) Stainless Steel	4
56	142-165-10	Spring Washer M12 SUS304 (EN X5Cr18-10)	4
57	025-000-61	Mechanical Seal H-40 SiC	1
58, 59	143-070-23	Pan Screw M5x6 SWRM	2
58, 59	030-141-10	Oil Lifter For H-40(T) Resin	1
58, 59	132-070-10	Pan Screw M5x6 (SWRM)	3
58, 59	030-149-18	Seal Stopper For H-40/45 SPCC	1
60	122-159-19	O-Ring (Brg.Housing/O.Casing) G-280(279,3xd5,7) NBR	1
61	029-191-11	Oil Casing 110-CE2 FC	1
62	122-159-19	O-Ring (Brg.Housing/O.Casing) G-280(279,3xd5,7) NBR	1
63	026-117-14	Oil Seal TC-709212 NBR	1
64	040-124-18	Impeller Shim d25,2xd35x0,3t SUS304 (EN X5CrNi18-10) Stainless Steel	1
65	021-839-14	Impeller (50Hz) 50Hz FC	1
66	142-202-10	Impeller Fixing Washer d13xd50x15t SUS304 (EN X5CrNi18-10) Stainless Steel	1
67	144-293-27	Hex.Socket Set Screw M6x12 SUS304 (EN X5CrNi18-10) Stainless Steel	2
68	140-303-16	Hex. Socket Cap Bolt M12x40 SUS304 (EN X5CrNi18-10) Stainless Steel	1
69	046-107-13	Air Release Valve PT-1/2 Nylon	1
70	140-130-36	Hex.Bolt M16x70 SWRM	8
70	140-129-32	Hex.Bolt M16x65 SWRM	8
71	048-000-40	Screwed Flange JIS10Kx100mm FC	1
71	048-000-39	Screwed Flange JIS10Kx80mm(PT) Grey Iron Casting	1
72	121-106-34	Packing JIS10Kx100mm NR	1
72	121-105-33	Packing JIS10Kx80mm NR	1
73	037-000-32	Discharge Bend (For 100mm) 100x100mm(S-4) FC	1
73	037-155-18	Discharge Bend 100x80mm(S-4B) FC	1
74	142-166-37	Spring Washer M16 SWRH	8

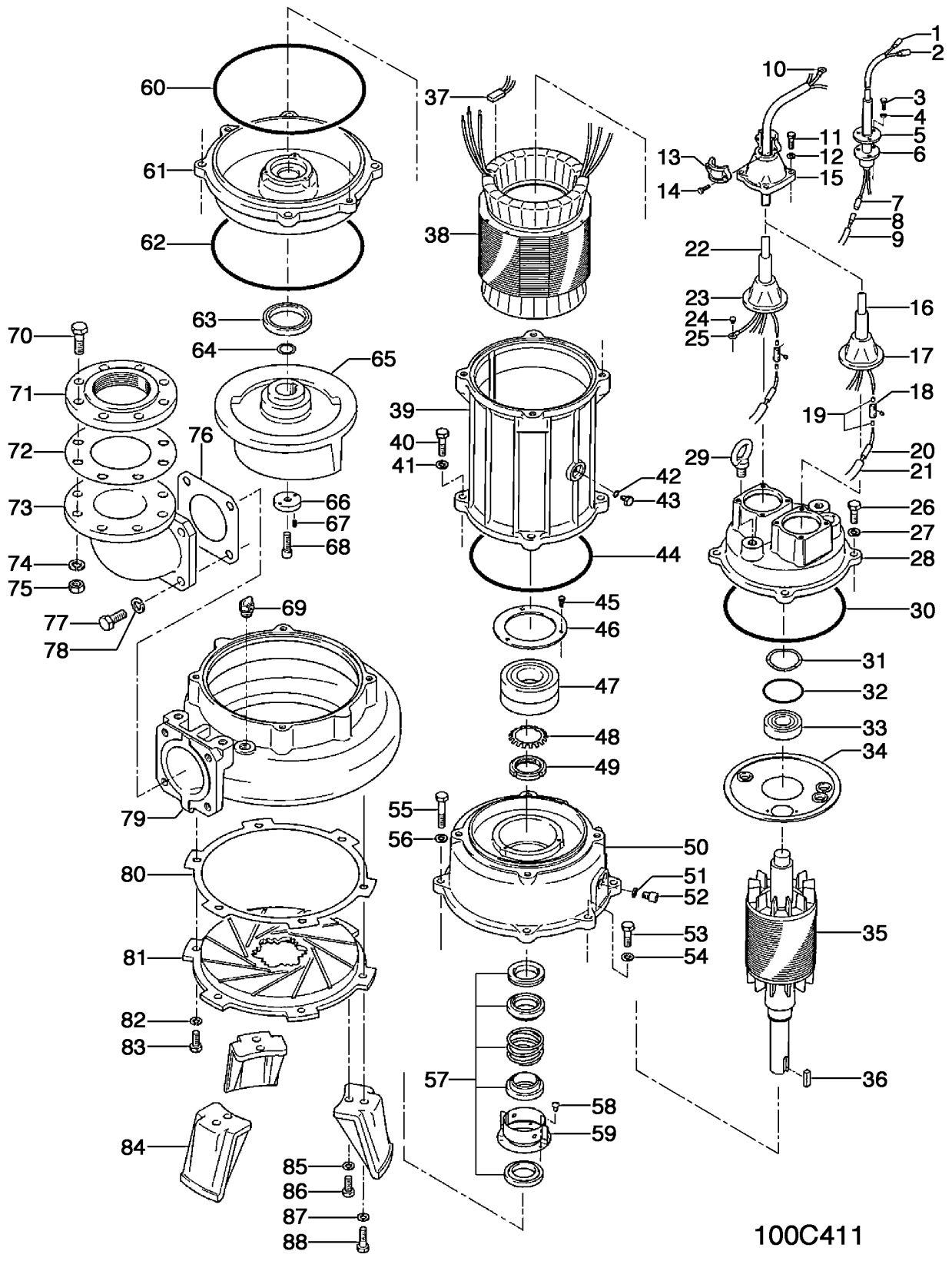
**100C411**

Kontroll-Nr. --

2018-10-17 V.18 / 1.10.2015

100C411			
Item	Item no.	Description	Quant.
75	141-008-11	Hex.Nut M16 SUS304 (EN X5CrNi18-10)	8
76	121-153-10	Packing 160mm2(P.C.165) NBR	1
77	140-124-11	Hex.Bolt M16x40 SUS304 (EN X5Cr18-10)	4
78	142-166-11	Spring Washer M16 SUS304 (EN X5Cr18-10)	4
79	020-539-18	Pump Casing 110-USH/USL FC	1
80	120-102-11	Packing (S.Cover) d301xd328x0.3t PE	1
81	022-330-26	Suction Cover 55/110-CE2 FCD	1
82	142-165-10	Spring Washer M12 SUS304 (EN X5Cr18-10)	3
83	140-097-14	Hex.Bolt M12x30 SUS304 (EN X5CrNi18-10)	3
84	023-288-18	Pump Stand 55/110-CE2 FC	3
85	142-165-10	Spring Washer M12 SUS304 (EN X5Cr18-10)	3
86	140-097-14	Hex.Bolt M12x30 SUS304 (EN X5CrNi18-10)	3
87	142-165-10	Spring Washer M12 SUS304 (EN X5Cr18-10)	3
88	140-099-16	Hex.Bolt M12x40 SUS304 (EN X5CrNi18-10)	3
	173-536-12	Packing & O-Ring Set	1
	##oilVG32	ml Turbine Oil ISO VG32	6400

# Exploded View 100C411



100C411