

100C411-52

Kontroll-Nr. --

2019-02-2C V.01.02.2019

Pos.no	Item no.	Description	Quant.	UP
		Dichtungs-Oring-Satz	1	Price on req.
1	009-116-10	Terminal R-2-4 CU	2	Price on req.
2	140-018-11	Hex.Bolt M5x15 SUS304 (EN X5CrNi18-10) Stainless Steel	3	Price on req.
3	142-422-18	Seal Washer PM-5 SUS+NBR	3	Price on req.
4	003-111-20	Gland SUS304 (EN X5CrNi18-10)	1	Price on req.
5	T01-TEG-99	Cabtyre Cable Set (10m) H07RN-F 3Cx1,5mm2	1	Price on req.
6	009-274-17	Compression type Terminal TMNB-2.2(Insulated) CU	2	Price on req.
7	009-131-11	Terminal 380V-50Hz R-5.5-6 CU	7	Price on req.
8	140-055-10	Hex.Bolt M8x25 SUS304	8	Price on req.
9	142-163-21	Spring Washer M8 SUS316 (DIN 1.4401) Stainless Steel	8	Price on req.
10	070-107-18	Cable Clamp FC	2	Price on req.
11	140-035-27	Hex.Bolt M6x20 SUS304 (EN X5CrNi18-10) Stainless Steel	4	Price on req.
12	006-126-14	Stuffing Box No.2 FC	2	Price on req.
13	001-TEG-09	Cabtyre Cable Set (20m) H07RN-F4Cx2,5mm² without stuffing box	1	Price on req.
13	M01-TEG-09	Cabtyre Cable Set (20m) NSSHÖU 4Cx2,5mm²	1	Price on req.
14	008-154-17	Mould Cover KR2-10 CR	1	Price on req.
15	009-275-18	Compression type Terminal TGNB-5.5(Insulated) CU	6	Price on req.
16	001-TEG-09	Cabtyre Cable Set (20m) H07RN-F4Cx2,5mm² without stuffing box	1	Price on req.
16	M01-TEG-09	Cabtyre Cable Set (20m) NSSHÖU 4Cx2,5mm²	1	Price on req.
17	008-136-13	Mould Cover KR2-1 CR	1	Price on req.
18	143-085-34	Pan Screw (w/Spring Washer) M4x6 C3604 (EN CuZn39Pb3)	1	Price on req.
19	009-122-19	Terminal R-3.5-4 CU	1	Price on req.
20	072-107-14	Eye Bolt M16 SS	2	Price on req.
21	140-098-15	Hex.Bolt M12x35 SUS304	4	Price on req.
22	142-165-10	Spring Washer M12 SUS304	4	Price on req.
23	050-437-18	Motor Bracket FC	1	Price on req.
24	122-173-19	O-Ring V-225 NBR	1	Price on req.
25	142-198-12	Wave Washer 6306 SK5	1	Price on req.
26	122-245-13	O-Ring 71.4xd3.1 NBR	1	Price on req.
27	052-109-14	Bearing 6306ZZC3	1	Price on req.
28	058-000-09	Lead Wire Protection Plate d80xd224x1.6t (SPHC)	1	Price on req.
29	055-000-69	Rotor	1	Price on req.
30	147-005-16	Impeller Key 12x8x40 Stainless Steel	1	Price on req.
31	053-310-13	Motor Protector 9700K-76-215 (H)	3	Price on req.
32	056-B91-15	Stator 220V-60HZ	1	Price on req.
33	064-506-12	Motor Frame FC	1	Price on req.
34	140-100-11	Hex.Bolt M12x45 SUS304	4	Price on req.
35	142-165-10	Spring Washer M12 SUS304	4	Price on req.
36	122-006-10	O-Ring P-8 NBR	1	Price on req.
37	144-550-12	Stator Set Bolt M8x12.5 SUS304 (EN X5CrNi18-10) Stainless Steel	1	Price on req.
38	122-173-19	O-Ring V-225 NBR	1	Price on req.
39	140-032-37	Hex.Bolt M6x15 SWRM	3	Price on req.
40	062-224-17	Bearing Fixing Plate d98xd140x4.5t SS	1	Price on req.
41	052-141-18	Bearing 6310ZZD2C3	1	Price on req.
42	142-393-19	Bearing Washer AW10 Stainless Steel	1	Price on req.
43	141-000-02	Bearing Nut AN10 SUS304 (EN X5CrNi18-10) Stainless Steel	1	Price on req.
44	060-431-13	Bearing Housing FC	1	Price on req.
45	121-247-12	Packing d12.3xd18x2t PE	2	Price on req.
46	035-113-18	Oil Plug M12x14 SUS304	2	Price on req.
47	140-099-16	Hex.Bolt M12x40 SUS304	2	Price on req.
48	142-165-10	Spring Washer M12 SUS304	2	Price on req.
49	140-104-15	Hex.Bolt M12x65 SUS304 (EN X5CrNi18-10) Stainless Steel	4	Price on req.
50	142-165-10	Spring Washer M12 SUS304	4	Price on req.
51	025-001-13	Mechanical Seal H-40X(E) SiC	1	Price on req.
52	143-070-23	Pan Screw M5x6 SWRM	2	Price on req.
53	030-141-10	Oil Lifter H-40(T) Resin	1	Price on req.
54	143-070-10	Pan Screw M5x6 SWRM	3	Price on req.
55	030-149-18	Seal Stopper H-40/45 SPCC	1	Price on req.
56	122-159-19	O-Ring (Brq.Housing/O.Casing) G-280(279.3xd5.7) NBR	1	Price on req.
57	029-191-11	Oil Casing 110-CE2 FC	1	Price on req.
58	122-159-19	O-Ring (Bra.Housing/O.Casing) G-280(279.3xd5.7) NBR	1	Price on req.
59	026-117-14	Oil Seal TC-709212 NBR	1	Price on req.
60	040-124-18	Impeller Shim d25.2xd34x0.3t SUS304 (EN X5CrNi18-10) Stainless Steel	1	Price on req.
61	021-839-14	Impeller (50HZ) 50Hz FC	1	Price on req.
62	142-202-10	Impeller Fixing Washer d13xd50x15t SUS304 (EN X5CrNi18-10) Stainless Steel	1	Price on req.
63	144-293-27	Hex.Socket Set Screw M6x12 SUS304 (EN X5CrNi18-10) Stainless Steel	2	Price on req.
64	140-303-16	Hex. Socket Cap Bolt M12x40 SUS304 (EN X5CrNi18-10) Stainless Steel	1	Price on req.
65	046-107-13	Air Release Valve PT-1/2 Nylon	1	Price on req.
66	140-130-36	Hex.Bolt M16x70 SWRM	8	Price on req.
66	140-129-32	Hex.Bolt M16x85 SWRM	8	Price on req.
67	048-000-40	Screwed Flange JIS10Kx100mm FC	1	Price on req.
67	048-000-39	Screwed Flange JIS10Kx80mm(PT) Grey Iron Casting	1	Price on req.
68	121-106-34	Packing JIS10Kx100mm NR	1	Price on req.
68	121-105-33	Packing JIS10Kx80mm NR	1	Price on req.
69	037-000-32	Discharge Bend(For 100mm)100x100mm(S-4) FC	1	Price on req.
69	037-155-18	Discharge Bend 100x80mm(S-4B) FC	1	Price on req.
70	142-166-37	Spring Washer M16 SWRH	8	Price on req.
71	141-008-11	Hex.Nut M16 SUS304 (EN X5CrNi18-10)	8	Price on req.
72	121-153-10	Packing 160mm2(P.C.165) NBR	1	Price on req.
73	140-124-11	Hex.Bolt M16x40 SUS304 (EN X5Cr18-10)	4	Price on req.
74	020-539-18	Pump Casing 110-USH/USL FC	1	Price on req.
75	120-102-11	Packing (S.Cover) d301xd328x0.3t PE	1	Price on req.
76	022-330-26	Suction Cover 55/110-CE2 FCD	1	Price on req.

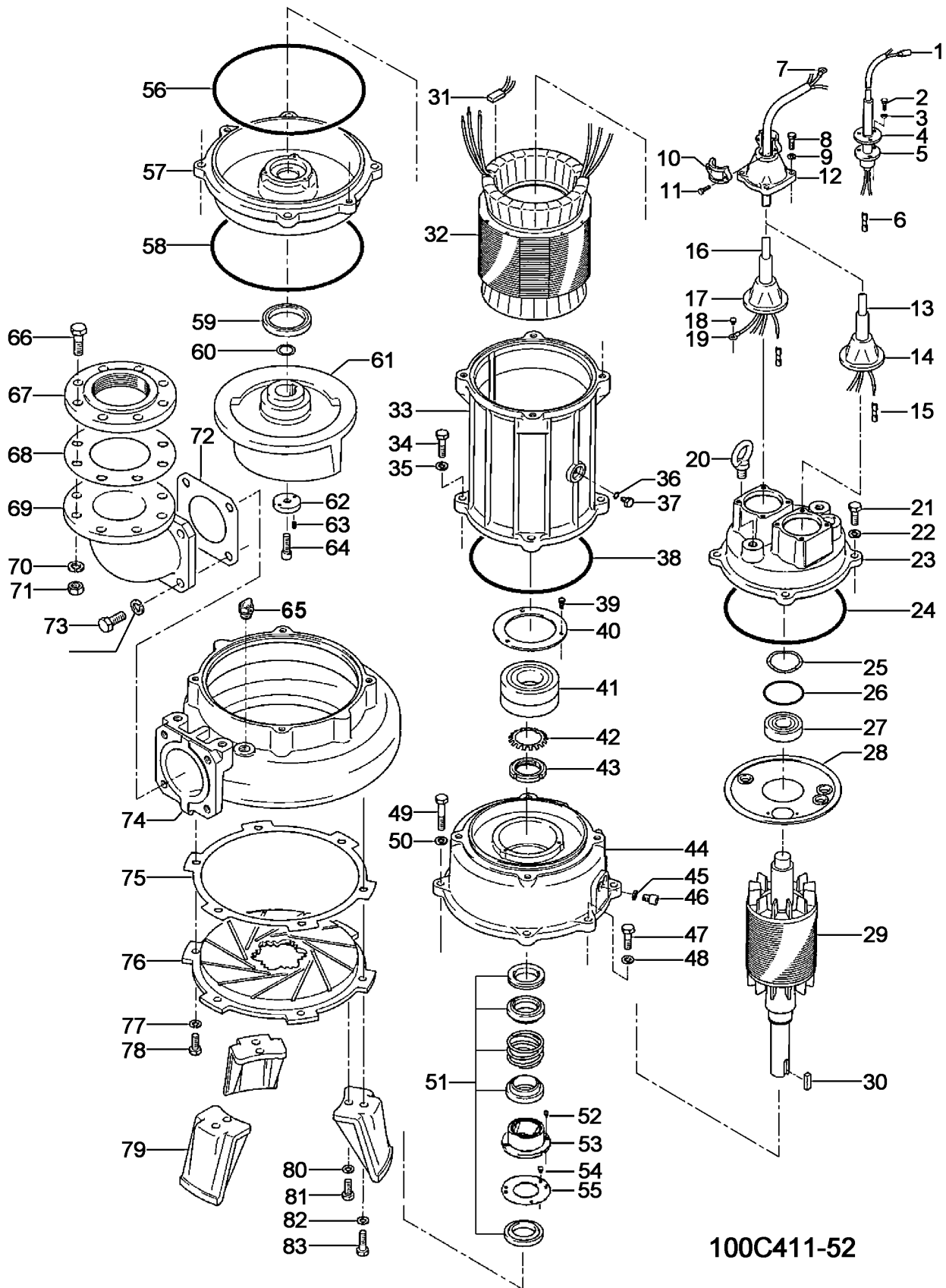
100C411-52

Kontroll-Nr. --

2019-02-20 V.01.02.2019

Pos.no	Item no.	Description	Quant.	UP
77	142-165-10	Spring Washer M12 SUS304	3	Price on req.
78	140-097-14	Hex.Bolt M12x30 SUS304	3	Price on req.
79	023-288-18	Pump Stand 55/110-CE2 FC	3	Price on req.
80	142-165-10	Spring Washer M12 SUS304	3	Price on req.
81	140-097-14	Hex.Bolt M12x30 SUS304	3	Price on req.
82	142-165-10	Spring Washer M12 SUS304	3	Price on req.
83	140-099-16	Hex.Bolt M12x40 SUS304	3	Price on req.
	173-536-12	Packing & O-Ring Set	1	Price on req.
	##oilVG32	ml Turbine Oil ISO VG32	6400	Price on req.

Exploded View 100C411-52



100C411-52