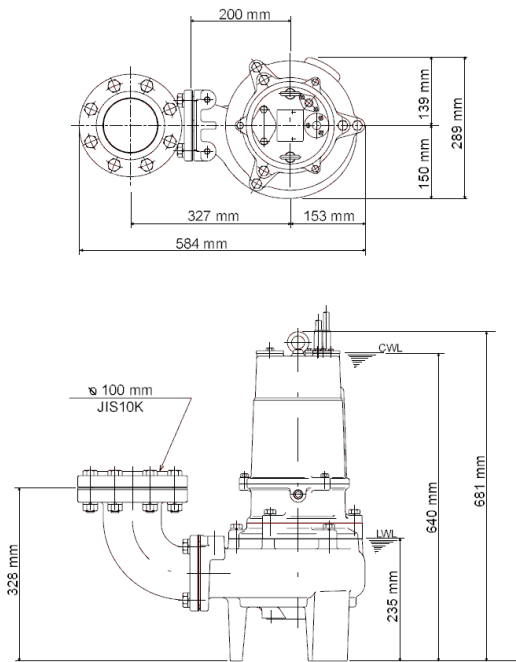
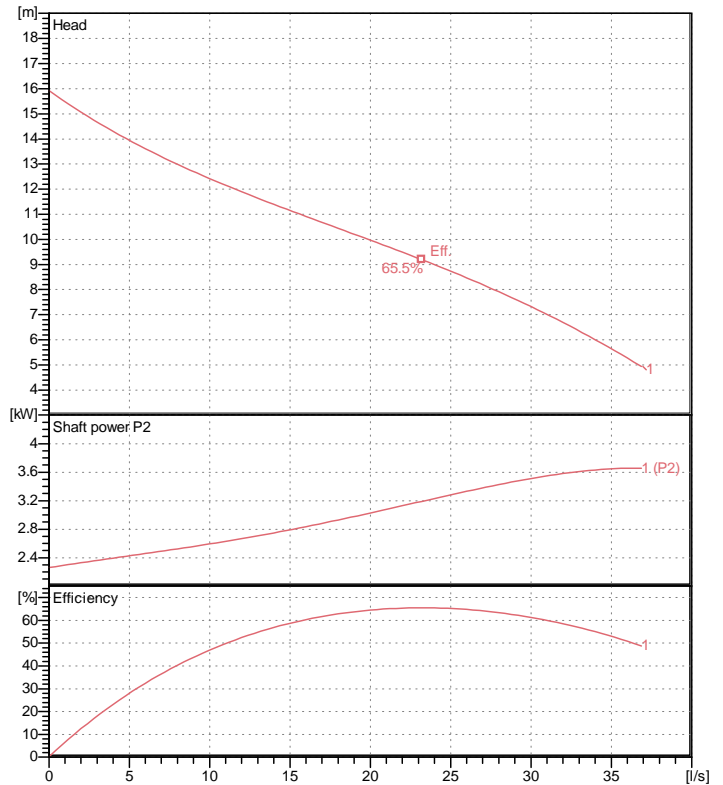


# Data sheet 100BZ43.7-52



100BZ43.7-52

CWL: Continuous running water level  
LWL: Lowest running water level



## Specification

Electric submersible pump  
Degree of protection IP 68  
Depth of submersion max. 15 m  
Type of impeller Single channel impeller  
Free passage 80 mm  
Suitable for:  
sewage water

## Electric motor

Dry-type submersible induction motor  
Insulation class F 4 Poles 1410 1/min  
Starting mode Directly  
Rated voltage 400 V 50 Hz 3~  
Power uptake 4.59 kW  
Rated power 3.70 kW  
Rated current 7.9 A  
Start current 49.0 A

## Cable

10m H07RN-F 4Cx1,5mm<sup>2</sup>

## Motor Protection

Miniature protector in windings  
(snap-action bi-metal device)

## Shaft seal

Double inside mechanical seal in oil bath  
additional lubrication by oil lifting device

Primary seal  
Silicon carbide on silicon carbide  
Secondary seal  
Silicon carbide on silicon carbide

## Bearings

Shielded ball bearings, maintenance-free

## Materials

Impeller	FC200 (EN-GJL-200)
Pump casing	FC200 (EN-GJL-200)
Motor Frame	FC150 (EN-GJL-150)
Shaft	SUS420J2 (EN-X30Cr13)

## Discharge size

4" (100mm) JIS 10K screwed-in mating flange  
guide rail fitting optional

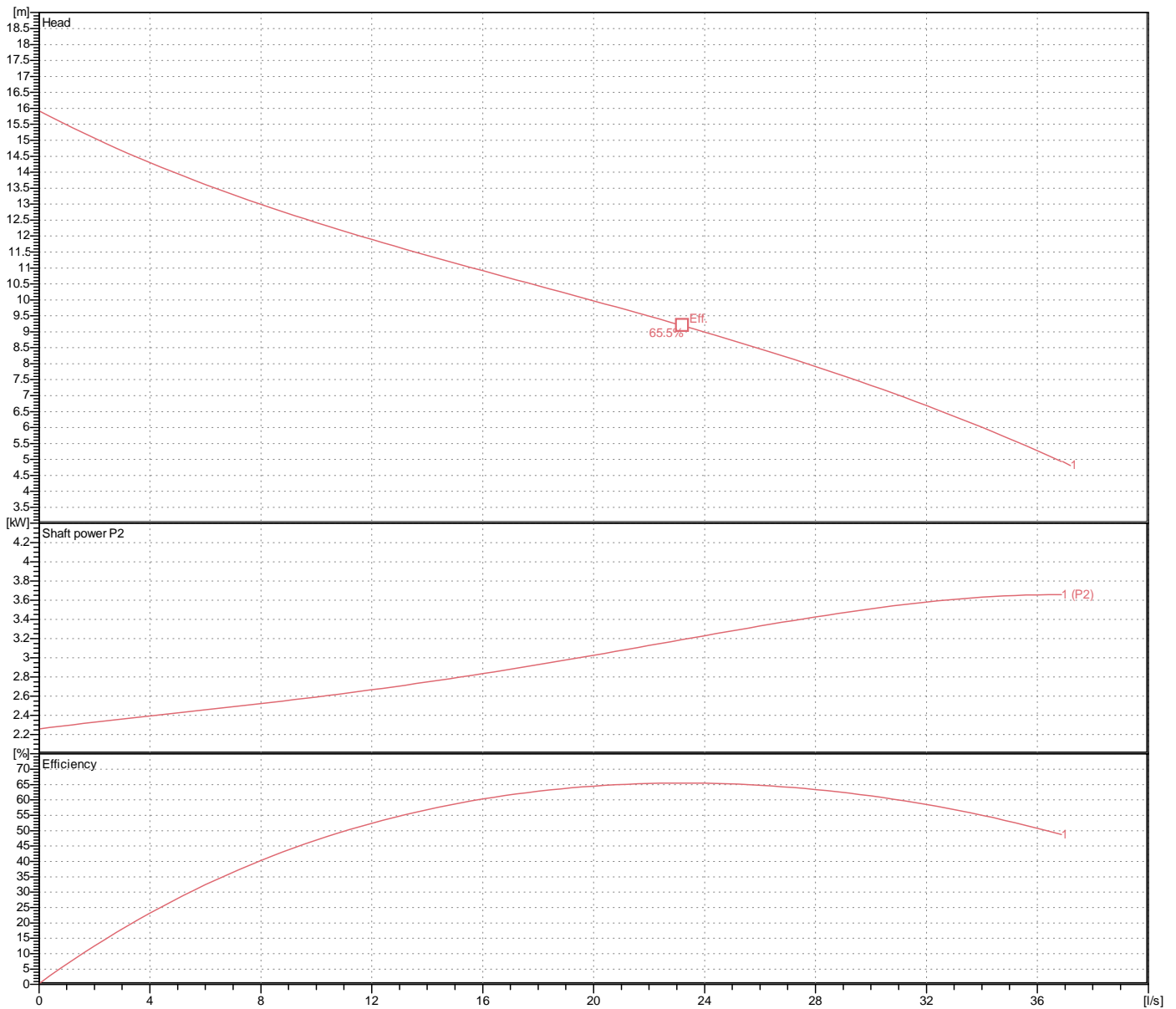
## Weight

100 kg (dry weight of the pump only without cable)

# Performance curve

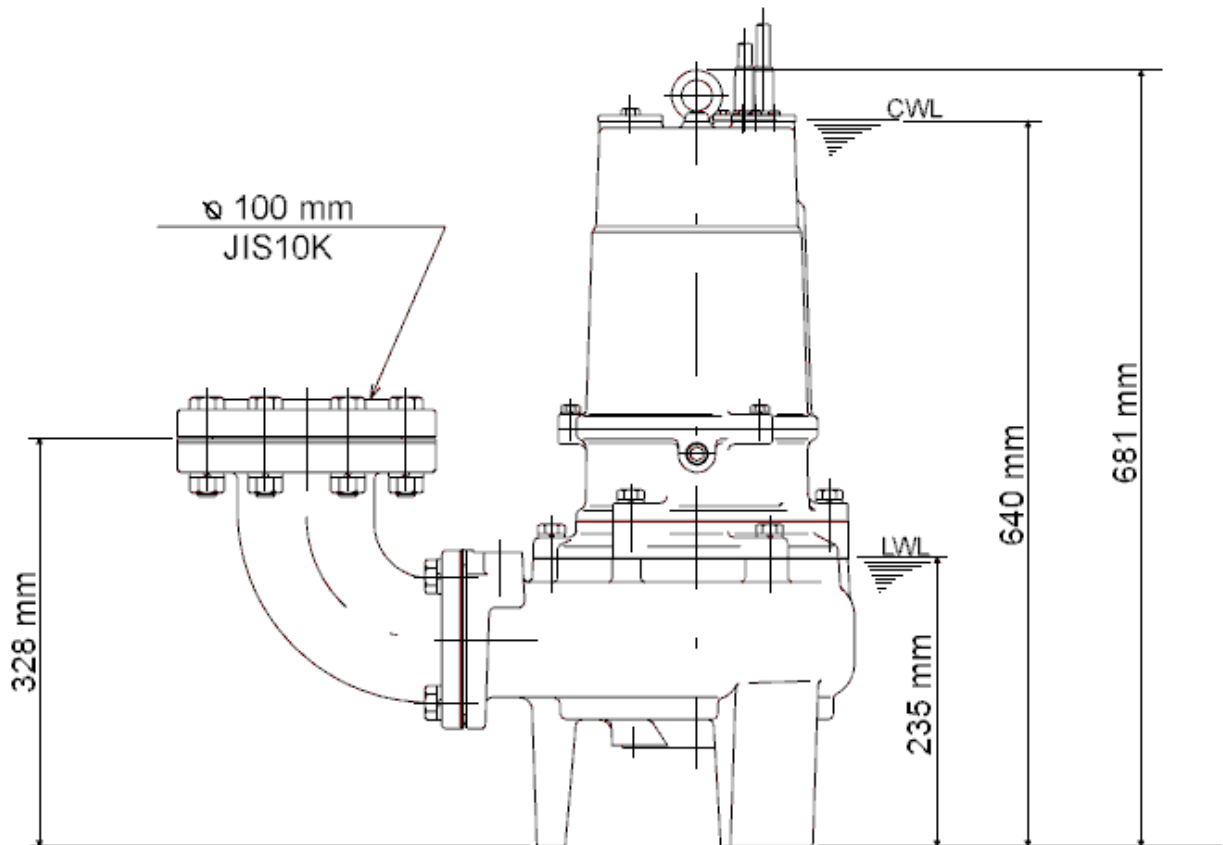
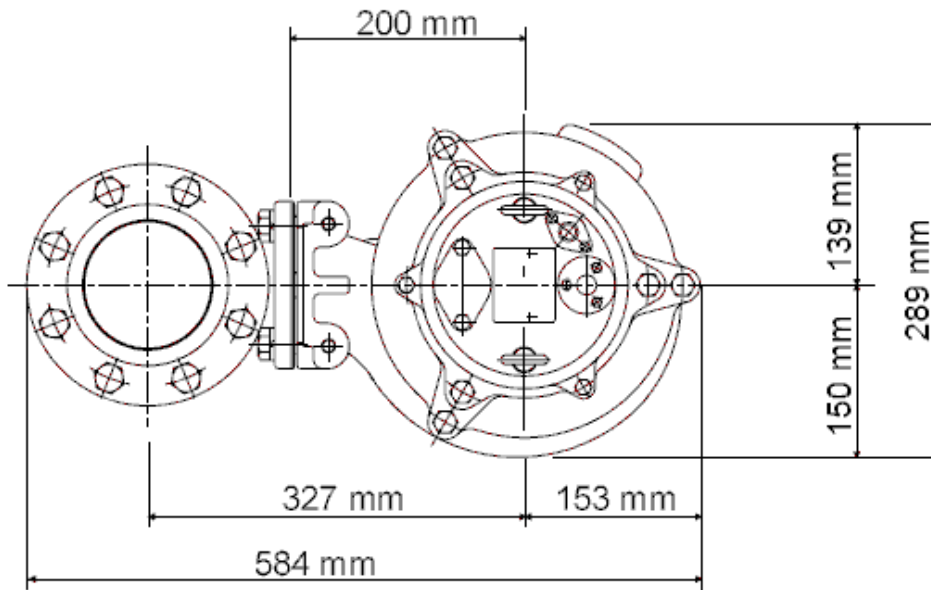
## 100BZ43.7-52

Discharge port	4"
Head	15.9 m
Flow	36.9 l/s
Rated power	3.70 kW
Power input	4.59 kW
Phases	3~
Voltages	400 V
Frequency	50 Hz
Rated current	7.9 A
Starting current	48.98 A
Number of poles	4
Speed	1410 1/min
Starting mode	Directly
Insulation class	F



# Dimensions

## 100BZ43.7-52



**100BZ43.7-52**

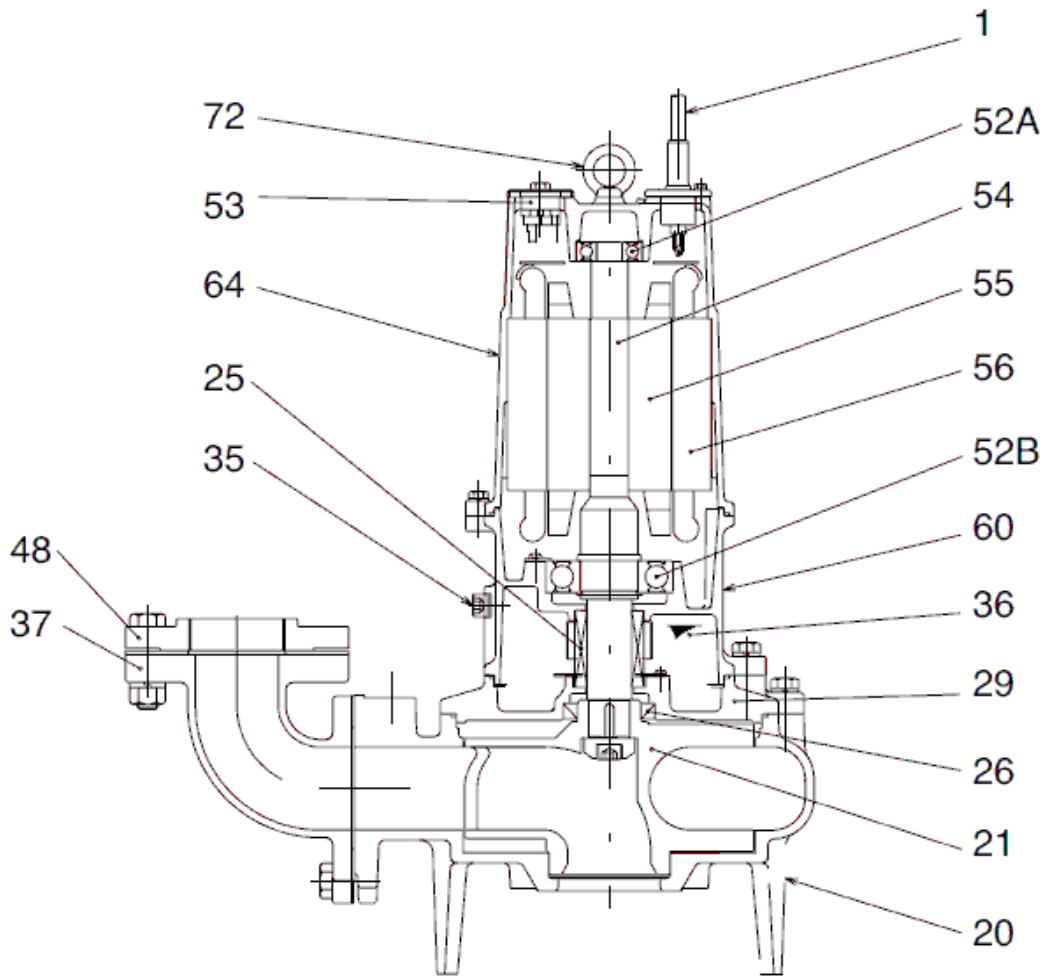
**CWL: Continuous running water level**  
**LWL: Lowest running water level**

 **TSURUMI PUMP**

Tsurumi Europe GmbH  
16.10.2018 V.18 / 1.10.2015

Heltorfer Str. 14 \* 40472 Düsseldorf \* Germany  
Tel.: +49-211-4179373 sales@tsurumi.eu  
Fax: +49-211-417937-480 www.tsurumi.eu

# Sectional drawing 100BZ43.7-52



**100BZ43.7-52**

No.	Description	Remark	No.	Description	Remark
1	Cable	H07RN-F	56	Stator	.
1b	Cable Theroguard	VCT4Cx1,25SQ	60	Bearing Housing	FC150 (EN-GJL-150)
20	Pump casing	FC200 (EN-GJL-200)	64	Motor Frame	FC150 (EN-GJL-150)
21	Impeller	FC200 (EN-GJL-200)	72	Eye screw	SUS304 (EN-X5CrNi18-10)
25	Mechanical seal	H-35A			
26	Oil seal	TC507212			
29	Oil casing	FC200 (EN-GJL-200)			
35	Oil screw	SUS304 (EN-X5CrNi18-10)			
36	Lubricant	Turbine oil (ISO VG32)			
37	Discharge bend	FC200 (EN-GJL-200)			
48	Screwed Flange	FC200 (EN-GJL-200)			
52A	Upper bearing	6304ZZC3			
52B	Lower bearing	6309ZZC3			
53	Circle thermal protector (3x)	.			
54	Shaft	SUS420J2 (EN-X30Cr13)			
55	Rotor	.			