



Performance Air Intake Kit Part Number: 827-705

1998-2000 Lexus GS300 3.0L 2JZ-GE

Installation Instructions

For technical inquiries please email us at tech@hpsperformanceproducts.com

In the email, please include the following information for faster response:

- Year / Make / Model / Engine of your vehicle.
- If it is a fitment issue, please include pictures showing the fitment problem.
- If there are missing parts, please list the part number(s) from the bill of materials on the 2nd page.
- Optional but recommended – Your contact phone number and preferred call back time.

You can also give us a call via 626-747-9200 for tech support Monday-Friday, 9:00am-5:00pm Pacific Time.

Bill of Materials

Kit Number: 827-705

Line #	Description	Part Number	Qty
1	Air Intake Pipe	529-600	1
2	Heat Shield	531-618	1
3	HPS Performance Air Filter	HPS-4297	1
4	Bracket	530-371	1
5	2.75" – 3.00" Reducer x 3" inches	P3SR-275-300-L3	1
6	T-Bolt Clamp for 2.75" Hose	SSTC-73-81	1
7	T-Bolt Clamp for 3.00" Hose	SSTC-79-87	1
8	Embossed Clamp	EMSC-12-22	2
9	Fuel Injection Clamp 10mm-12mm	FIC-12	2
10	Fuel Injection Clamp 13mm-15mm	FIC-15	2
11	14mm EPDM Hose x 12 inches	EPDM-056	1
12	9.5mm EPDM Hose x 10 inches	EPDM-038	1
13	6mm EPDM Hose x 11 inches	EPDM-025	1
14	Bubble Edge Trim x 13 inches	7750B2X1/16C	1
15	Bubble Edge Trim x 56 inches	7750B2X1/16C	1
16	Air Venturi Reducer 3.00" – 2.75"	HW-VEN-300-275	1
17	M6x12mm Bolt x 16mm	HW-B6-16	1
18	M6x12mm Bolt x 12mm	HW-B6-12	1
19	M6 Nut	HW-N6	2
20	M6 Flat Washer	HW-FW6L	4
21	M6 Vibration Mount x 1/2 inches	HW-RM6-50	1
22	Button Head Screw, 18-8 Stainless Steel, M5 x 0.80 mm Thread, 18mm Long	92095A481	2
23	Spacer, 10 mm OD, 3 mm Long, for M5	94669A069	2
24	Washer for M5 Screw Size, 18-8 Stainless Steel, 5.3 mm ID, 15 mm OD	97310A129	2

- Before installing any parts of this intake system, please read the instructions thoroughly.
- Verify the contents of this intake kit before disassembling your vehicle.
- Report any defective or missing parts to HPS directly. The HPS dealer you purchased this product from might not have the replacement parts you need.
- Installation requires moderate mechanical skills. A qualified mechanic is highly recommended.
- Do not attempt to install the intake system while the engine is hot.
- This installation may require removal of coolant lines that may be hot.
- For technical inquiries, please email us at tech@hpsperformanceproducts.com

PLEASE READ CAREFULLY BEFORE INSTALLATION!

This installation is not for the novice customer. Install this product with EXTREME caution! Misuse of this product can destroy your engine! If you are not mechanically inclined, please have a professional automotive mechanic install this kit.

NOTE: HPS holds no responsibility for any engine damage that results from misuse of this product.

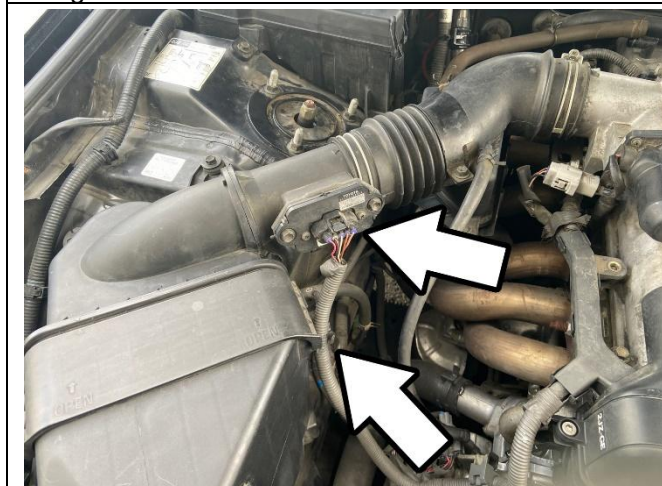
GETTING STARTED

1. Turn the ignition OFF and disconnect the vehicle's negative battery cable. If the engine has run within the past two hours let it cool down.

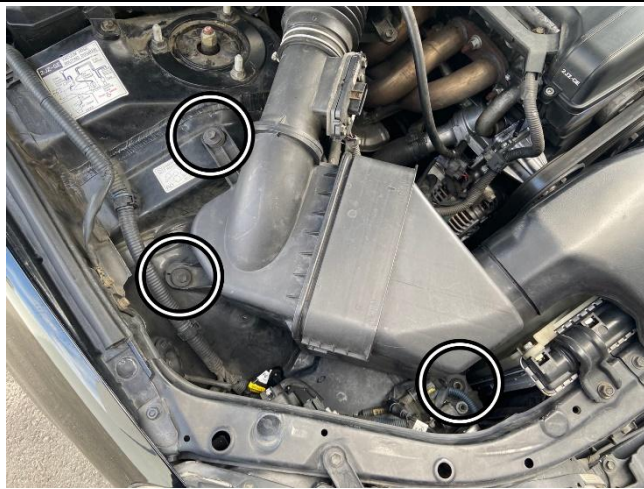
NOTE: Disconnecting the negative battery cable erases pre-programmed electronic memories. Write down all memory settings before disconnecting the negative battery cable. Some radios will require an anti-theft code to be entered after the battery is reconnected. The anti-theft code is typically supplied with your owner's manual. In the event your vehicles' anti-theft code cannot be recovered, contact an authorized dealership to obtain your vehicles anti-theft code. We also highly recommend NOT discarding any stock parts after the installation.



2. Disconnect the breather hose from the valve cover. Disconnect the power steering assist hose at the left of the engine, and the charcoal canister air outlet hose along the frame rail.



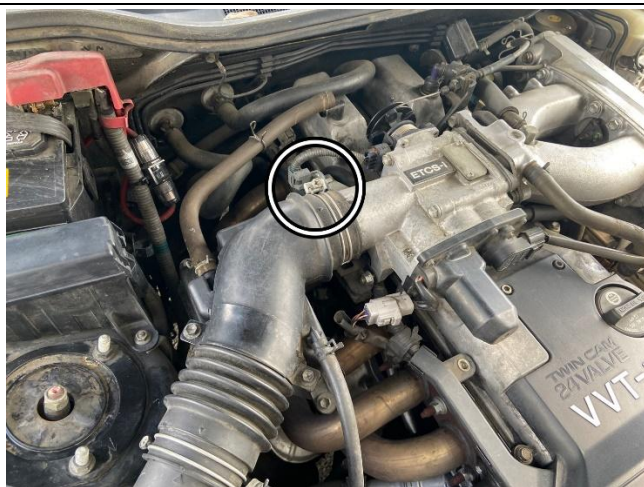
3. Disconnect the mass air flow sensor harness and unclip the electrical harness from the air box.



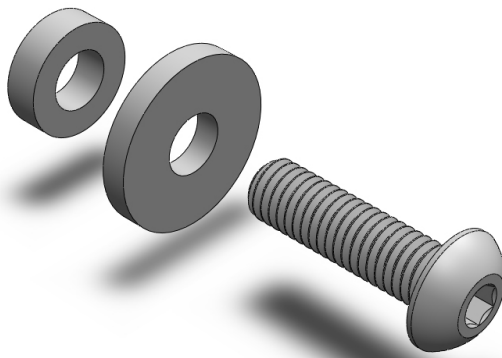
4. Remove the three 10mm bolts securing the airbox assembly.



5. Remove the 10mm bolt securing the factory air duct from the airbox and remove the duct from the vehicle.



6. Loosen the hose clamp securing the factory intake hose from the throttle body. Remove the factory intake hose along with the airbox assembly from the vehicle.



7A. Assemble the M5 bolt, washer, and spacer in the sequence as shown.



7B. Remove the mass air flow sensor from the stock intake and transfer it onto the HPS intake pipe. Use the hardware in step 7A to install the sensor.



8. Insert the provided air venturi sleeve into the HPS intake pipe.



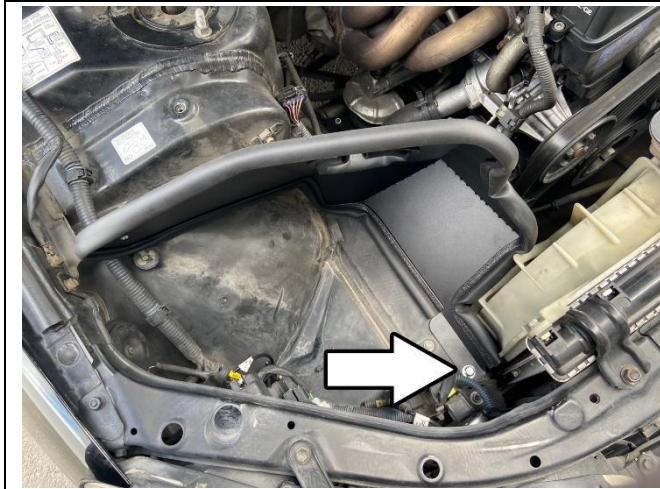
9. Insert the reducer coupler onto the throttle body along with the provided T-bolt clamps.



10. Install the provided bubble edge trim onto the heat shield.



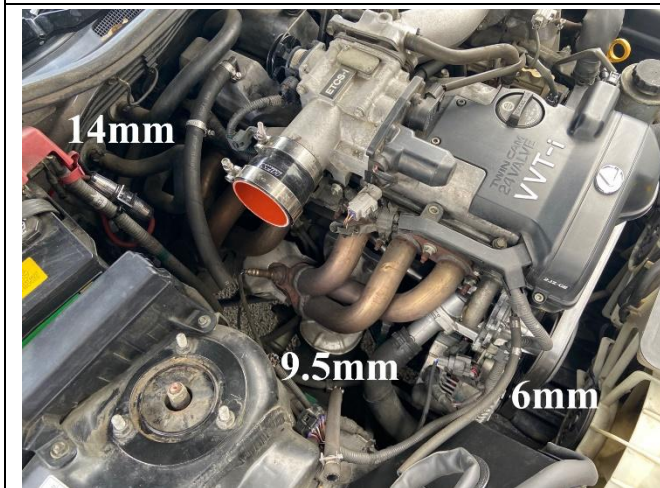
11. Install the provided 1/2" vibration mount onto the factory airbox mount.



12. Install and secure the heat shield onto the factory airbox mount using the provided M6x12mm bolt and washer.



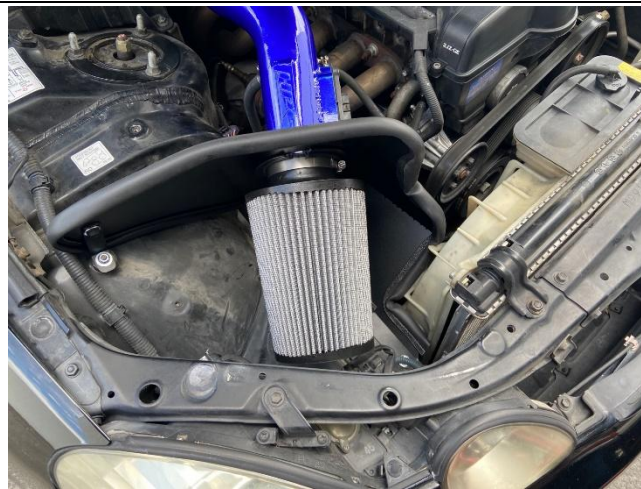
13. Fasten the provided "L" bracket onto the heat shield and vibration mount using the M6x16mm bolt, washers, and nuts.



14. Install the provided EPDM hoses, along with clamps onto the valve cover, power assist, and charcoal canister air line with the sizes shown above.



15. Insert the HPS intake into the heat shield and into the throttle body. Next, install and secure the EPDM hoses onto the intake pipe.



16. Install the provided HPS Performance Air Filter.



17. Reconnect the MAF sensor harness.



Final Steps

Once the intake has been positioned, tighten all of the clamps and secure all of the parts.

Upon completion of the installation, reconnect the negative battery terminal before you start the engine. Double check to make sure everything is tight and properly positioned before starting the vehicle.

Start the engine. Let the car idle for 3 minutes. Perform a final inspection before driving. Listen carefully for any odd noises, rattles and/or air leaks prior to taking it for a test drive. If any problems arise go back and check the vacuum lines, hoses and clamps that may be causing leaks or rattles and correct the problem.

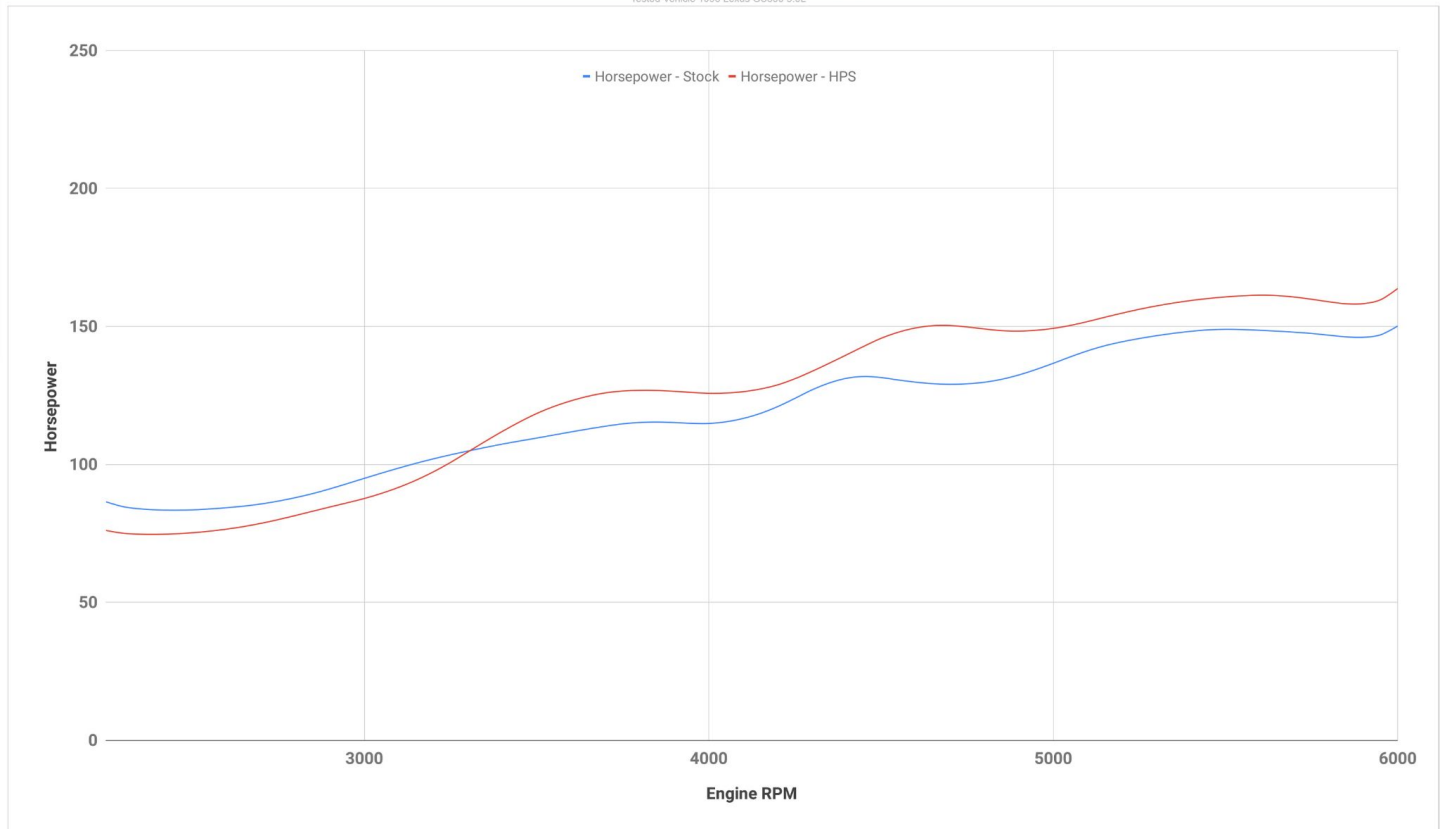
Periodically, recheck the alignment of the intake system and make sure there is proper clearance around and along the length of the intake. Failure to follow proper maintenance procedures may cause damage to the intake and will void the warranty.



HPS Performance Air Intake Kit with Heat Shield (827 Series)
1998-2000 Lexus GS300 3.0L
Part Number: 827-705

Maximum Horsepower Gains = 11 whp @ 4000 rpm

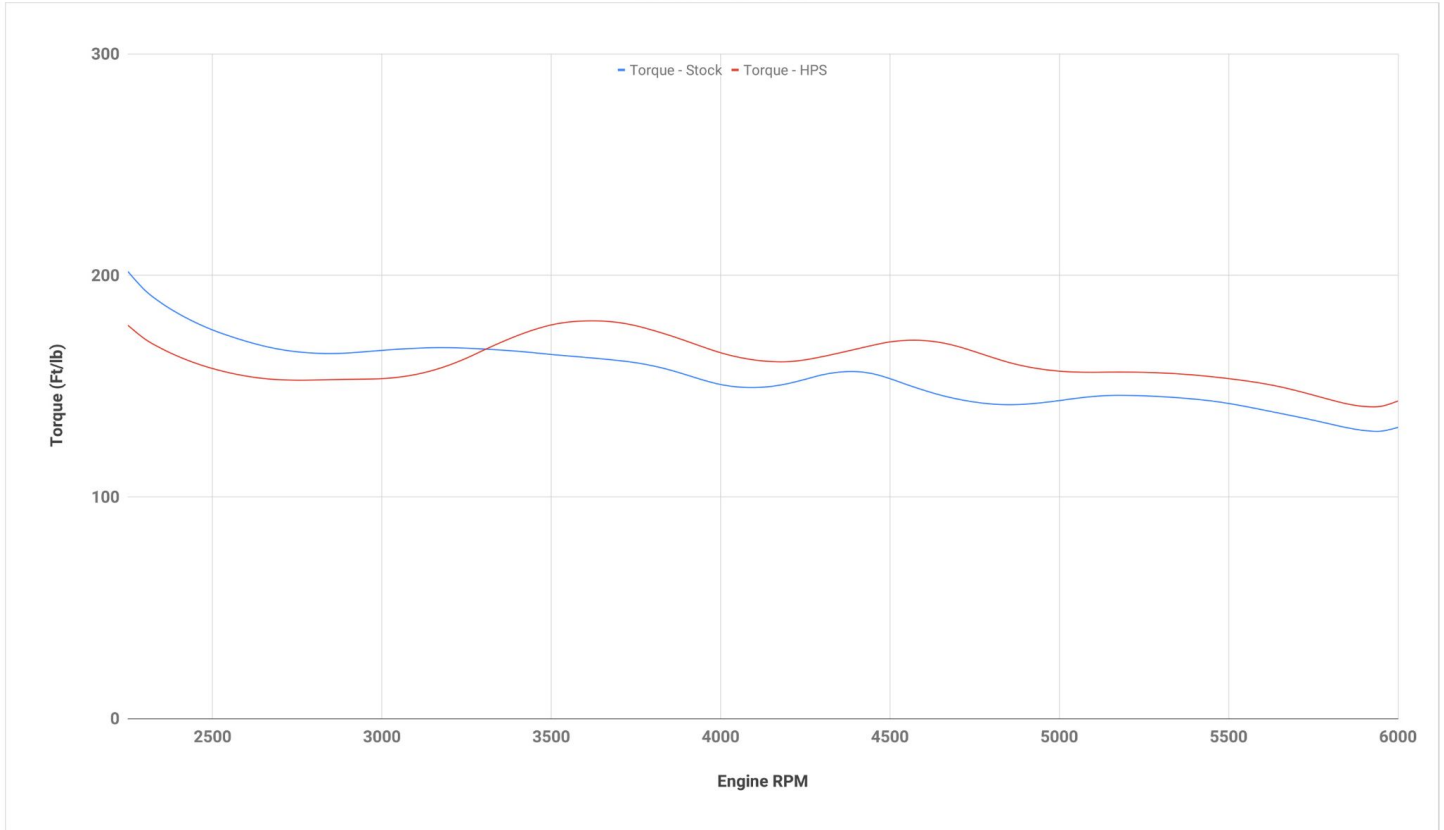
Tested Vehicle 1998 Lexus GS300 3.0L



HPS Performance Air Intake Kit with Heat Shield (827 Series)
1998-2000 Lexus GS300 3.0L
Part Number: 827-705

Maximum Torque Gains = 14.4 ft/lb @ 4000 rpm

Tested Vehicle 1998 Lexus GS300 3.0L



Also available for 2nd Gen Lexus GS300 3.0L 2JZ-GE

HPS Silicone Radiator Coolant Hose Kit

[Part Number 57-1271](#)



HPS Silicone Heater Coolant Hose Kit

[Part Number 57-2022](#)



HPS Performance Stainless Steel Magnetic Oil Drain Plug Bolt

[Part Number MDP-M12x125](#)



**Contact an authorized HPS Performance dealer or
visit us at hpsperformanceproducts.com for more details**