

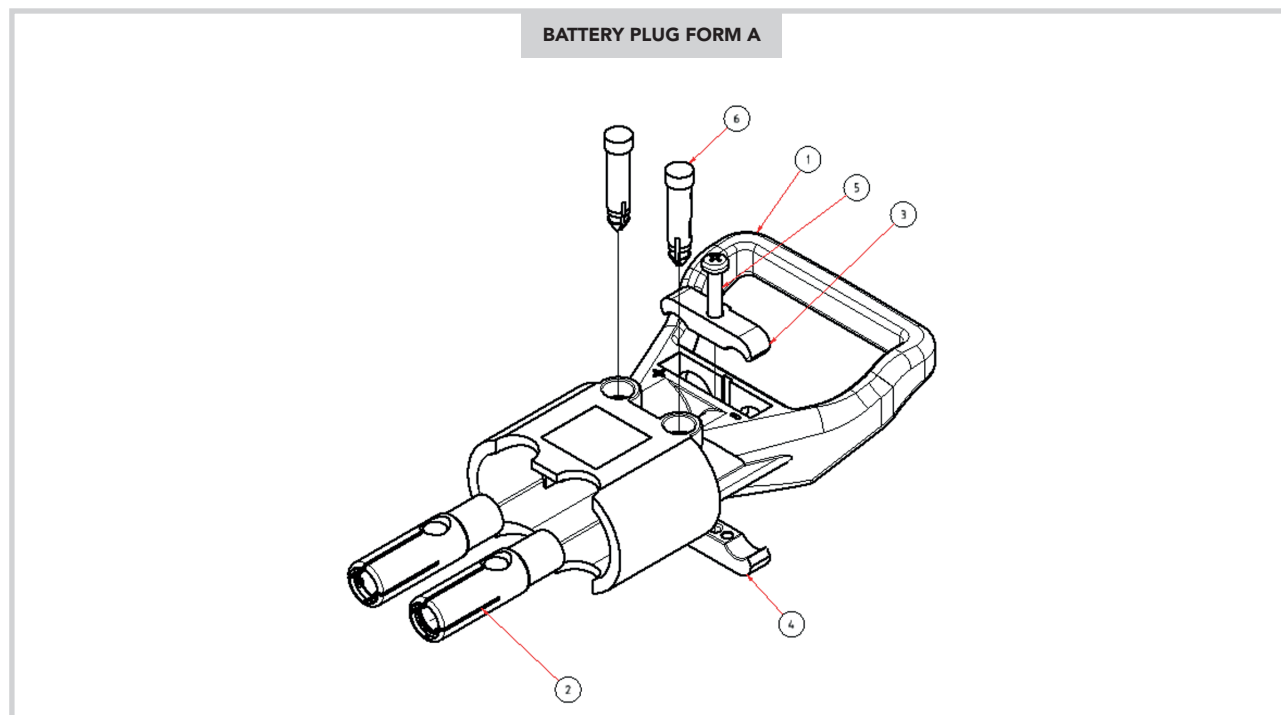
# REMA TWIN PLUG AND SOCKET CONNECTIONS 160/200



## Product features and advantages

- Simple handling
- Robust design
- High-grade contacts made out of pure high conductive Cu-ETP copper with silver plated surface and an anti-friction and tarnish coating ensure
  - Power transmission with minimal losses
  - Long life
- Suitable for cable sizes of 35 mm<sup>2</sup> and 50 mm<sup>2</sup>
- Direct crimping without reducing bushing
- Typical applications
  - Forklift trucks
  - Trucks, their trailers and towbars
  - Battery charging systems
  - Industrial applications

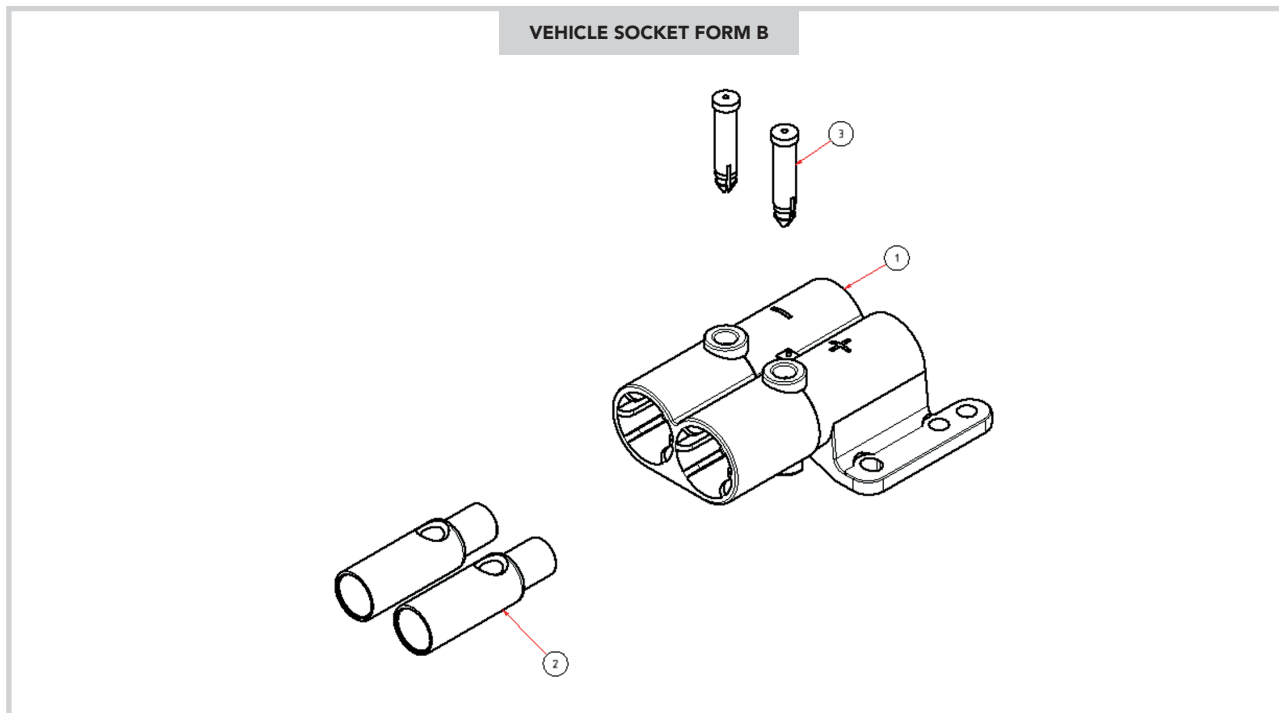
## 1. STRUCTURE / PART-NUMBERS



### SETS AND PARTS

POS.	DESCRIPTION	CROSS SECTION	PART-NO.
1,2(2x),3,4,5,6(2x)	Battery plug form A	35 mm <sup>2</sup>	107301
1,2(2x),3,4,5,6(2x)	Battery plug form A	50 mm <sup>2</sup>	107302

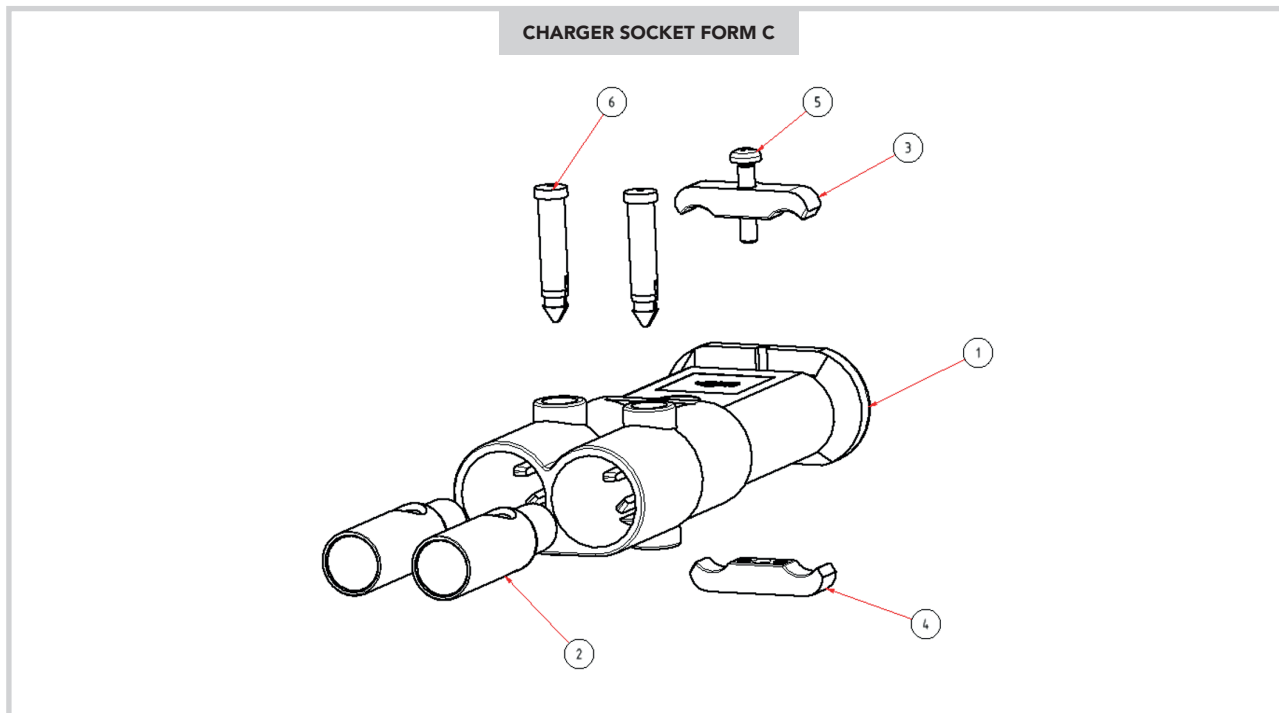
POS.	DESCRIPTION	PART-NO.
1	Housing plug form A	100090
2	Pin contact 35mm <sup>2</sup>	107316
2	Pin contact 50mm <sup>2</sup>	107317
3	Cable clamp UP	100110
4	Cable clamp LP	107339
5	Screw	102656
6	Locking pin	100106



## SETS AND PARTS

POS.	DESCRIPTION SET	CROSS SECTION	PART-NO.
1,2(2x),3(2x)	Vehicle socket form B	35 mm <sup>2</sup>	107305
1,2(2x),3(2x)	Vehicle socket form B	50 mm <sup>2</sup>	107306

POS.	DESCRIPTION	PART-NO.
1	Housing socket form B	100097
2	Bushing contact 35mm <sup>2</sup>	107322
2	Bushing contact 50mm <sup>2</sup>	107325
3	Locking pin	100107



## SETS AND PARTS

POS.	DESCRIPTION SET	CROSS SECTION	PART-NO.
1,2(2x),3(2x)	Charger socket form C	35 mm <sup>2</sup>	107307
1,2(2x),3(2x)	Charger socket form C	50 mm <sup>2</sup>	107308

POS.	DESCRIPTION	PART-NO.
1	Housing socket form C	100102
2	Bushing contact 35mm <sup>2</sup>	107322
2	Bushing contact 50mm <sup>2</sup>	107325
3	Cable clamp UP	100110
4	Cable clamp LP	107339
5	Screw	102656
6	Locking pin	100107

## 2. TECHNICAL SPECIFICATIONS

### GENERAL

---

> Nominal voltage $U_N$	48 V DC
> Current rating $I_N$	160 A / 200 A <sup>(1)</sup>
> Test voltage	2 kV AC
> Temperature range (incl. self-heating)	-20 °C ... +105 °C
> Plugging line contacts	24 mm

(1) only for cross-section 50 mm<sup>2</sup>

### MATERIAL HOUSING

---

> Description	>PA6<
> Color	black sim. RAL9005
> Battery acid resistance	no
> Flammable resistance	HB acc. IEC 60695-11-10-20
> Comparative Tracking Index	600 V acc. IEC 60112
> Oil and grease resistance	yes
> High impact strenght	yes

### MATERIAL CONTACTS

---

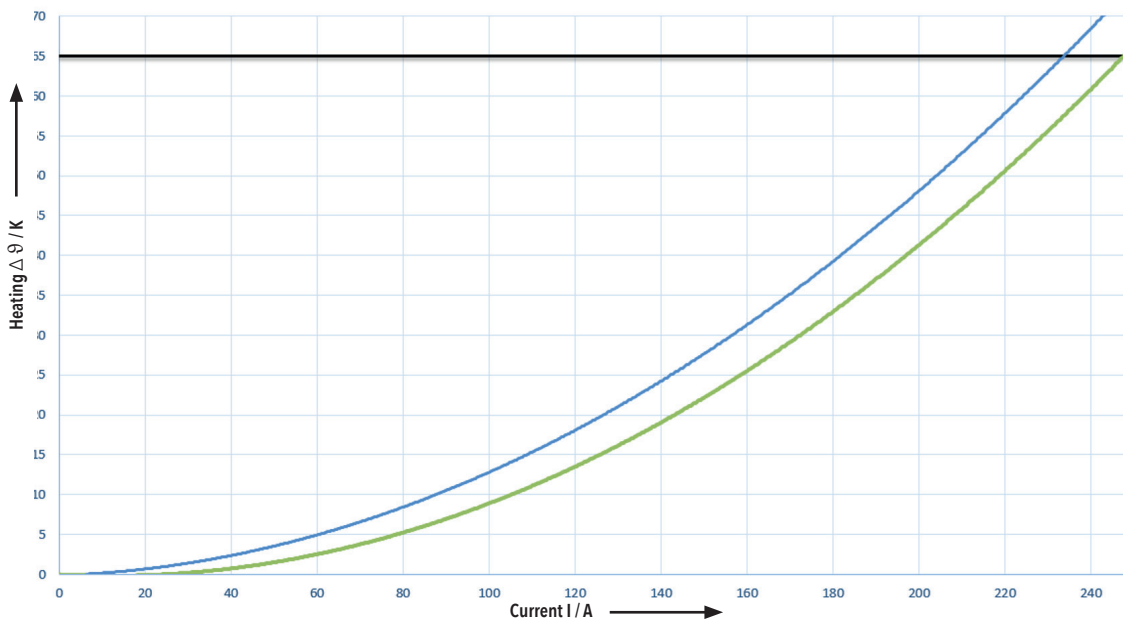
- > Electrolytic high conductive copper Cu-ETP acc. EN 13601 and silver plated surface

### 3. HEATING OF MAIN CONTACTS

REMA Twin plug and socket connections can be loaded with a cross-section of 35 mm<sup>2</sup> with a rated current  $I_N$  of 160 A and with a cross-section of 50 mm<sup>2</sup> with a rated current  $I_N$  of 200 A.

The following curves are for reference. The actual thermal performance may vary depending upon environmental conditions.

REMA TWIN PLUG AND SOCKET CONNECTIONS 160/200

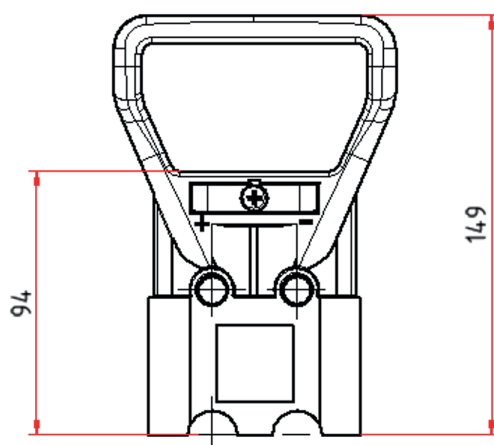
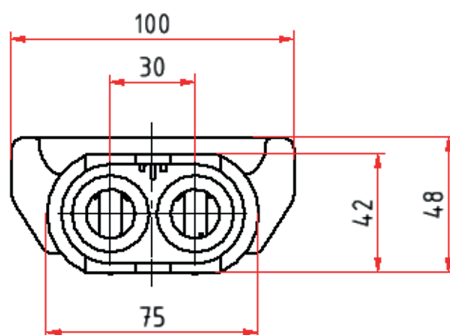


Extra fine-wired highly flexible quality - EN 60228/class 6

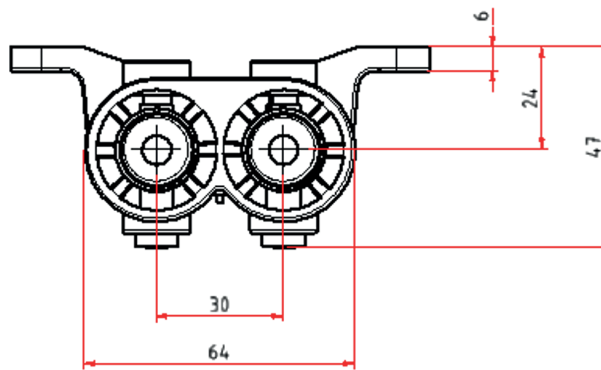
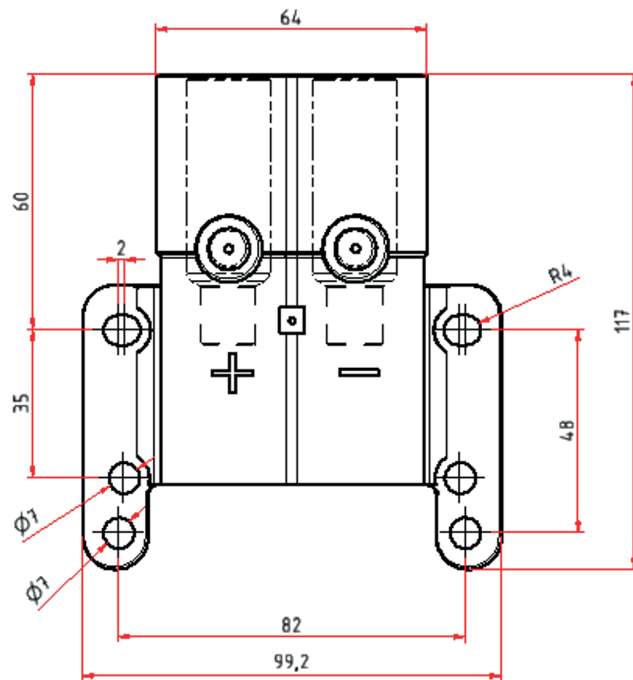
Please contact REMA for additional information.

## 4. DRAWINGS

**BATTERY PLUG FORM A**  
(all dimensions app. mm)

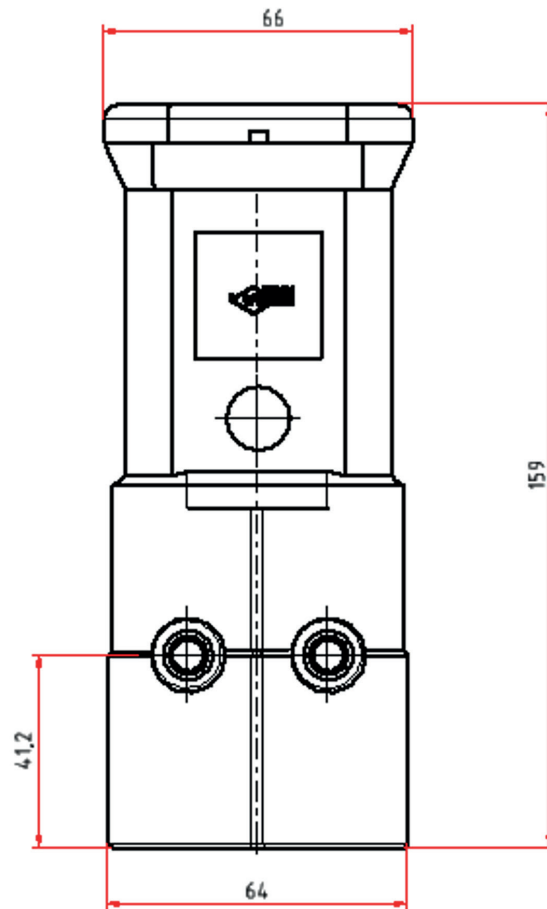
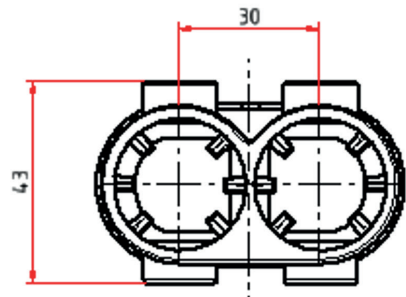


**VEHICLE SOCKET FORM B**  
(all dimensions app. mm)

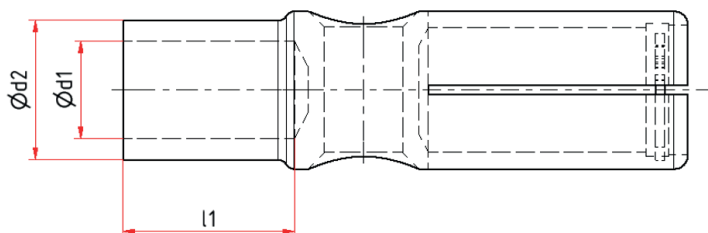




**CHARGER SOCKET FORM C**  
(all dimensions app. mm)



## Preparation wire



CROSS SECTION [mm <sup>2</sup> ]	$\varnothing d2$ [mm]	$\varnothing d1$ [mm]	$l1$ [mm]
	-0,1	-0,1	-1
35	13,0	9,1	17,0
50	15,0	10,5	20,0

## 6. DIE SETS

### General processing information

- Please only use suitable REMA die sets. Only those guarantee a secure electrical connection.
- Please actuate die sets always until the end.
- Only process contacts with clean sleeves. The contaminated crimpsleeves increase the contact resistance and may lead to overheating.
- Please always set the die sets centred on the crimp sleeves.

### Hydraulic tool pliers set HP60 Type H60 - Die Sets

- Indent crimping press area 6 – 70 mm<sup>2</sup> **Set Part-No. 107138**
- Double indent crimping press area 16 – 70 mm<sup>2</sup> **Set Part-No. 113032**



### Typ C130 - die sets

- Indent crimping press area 10 – 95 mm<sup>2</sup>
- Souple indent crimping press area 10 – 240 mm<sup>2</sup>



For further questions, please contact your REMA Sales department.

### Selection of deliverable range of die sets type C130

CROSS SECTION	TYPE OF DIE SET	PART-NO.	CROSS SECTION	TYPE OF DIE SET	PART-NO.
35 mm <sup>2</sup>	indent	111094	35 mm <sup>2</sup>	double indent	107191
50mm <sup>2</sup>	indent	111095	50 mm <sup>2</sup>	double indent	107196

### Selection of deliverable range of die sets type H60

CROSS SECTION	TYPE OF DIE SET	PART-NO.	CROSS SECTION	TYPE OF DIE SET	PART-NO.
35 mm <sup>2</sup>	indent	107267	35 mm <sup>2</sup>	double indent	107272
50 mm <sup>2</sup>	indent	107268	50 mm <sup>2</sup>	double indent	107273