



PORTABLE AIR-CONDITIONER
MODEL: USPC01W

Owner's Manual

Please read this manual carefully before operating your set.

Customer Support: 909-606-4551

Product Inquires and Support: www.ukoke.com

TABLE OF CONTENTS

Safety Information	
Important Safety Instructions.....	1
Safety Guidelines.....	2
Machine Dimensions	
Specifications.....	3
Parts Description	
Main Components.....	4
Product Usage	
Placement and Installation.....	5
Control Panel and Remote Controller.....	9
Operating the Control Panel.....	10
Cleaning and Maintenance Drainage Method	
Maintenance.....	12
Filter Screen.....	13
Seasonal Maintenance.....	14
Mobile App Control.....	15
Troubleshooting.....	23
Warranty.....	26

WARRANTY

LIMITED WARRANTY

Any repair, replacement, or warranty service, and all questions about this product should be directed to Ukoke Tech. at **909-606-4551**

Ukoke Tech. warrants to the original purchaser that the product will be free from defects in material, parts and workmanship for the period designated for this product. The warranty commences the day the product is purchased and covers up to a period of **1 year (12 months) for labor/1 year (12 months) for parts (manufacturing defects only)/and a total of 5 years (60 months) for compressor part only.** Ukoke Tech. agrees that it will, at its option, replace the defective product with either a new or remanufactured unit equivalent to your original purchase during the warranty period.

Exclusions: This warranty does not apply to the below:

1. If the appearance or exterior of the product has been damaged or defaced, altered or modified in design or construction.
2. If the product original serial number has been altered or removed or cannot be readily determined.
3. If there is damaged due to power line surge, user damage to the AC power cord or connection to improper voltage source.
4. If damage is due to general misuse, accidents or acts of God.
5. If repair attempts are done by unauthorized service agents, use of parts other than genuine parts or parts obtained from persons other than authorized service companies.
6. On units that have been transferred from the original owner.
7. On products that have been purchased as refurbished, like new, second-hand, in a "As-Is" or "Final Sale" terms.
8. To products used in a commercial or rental setting.
9. To products used in settings other than ordinary household use or used other than in accordance with the provided instructions.
10. To damages for service calls for improper installations.
11. To glass parts and other accessory items that are included with the unit.
12. Transportation and shipping costs associated with the replacement of the unit.
13. Flood loss for loss due to product failure or delay in service, repair or replacement.
14. Service calls to instruct you how to use your product.
15. Service calls to repair or replace the house fuse, reset the circuit breaker or correct the wiring in the house.

REPAIR OR REPLACEMENT AS PROVIDED UNDER THIS WARRANTY IS THE EXCLUSIVE REMEDY OF THE CUSTOMER; Ukoke Tech. SHALL NOT BE LIABLE FOR ANY INCIDENTAL OR CONSEQUENTIAL DAMAGES FOR BREACH OF ANY EXPRESS OR IMPLIED WARRANTY ON THIS PRODUCT, EXCEPT TO THE EXTENT PROHIBITED BY APPLICABLE LAW. ANY IMPLIED WARRANTY OF MERCHANTABILITY OF FITNESS FOR A PARTICULAR PURPOSE ON THIS PRODUCT IS LIMITED TO THE DURATION OF THE WARRANTY.

Some states do not allow the exclusion or limitations of incidental or consequential damages, or limitations on how long the warranty lasts. In these cases the above exclusions or limitations may not apply to you. This warranty gives you specific legal rights and you may also have other rights which vary from state to state.

Obtaining Service: To obtain service, product literature, supplies or accessories please call **909-606-4551** to create a ticket for exchange/repair. Please make sure to provide the date of purchase, model number and a brief description of the problem. Our customer service representative will contact you or send detailed return instructions.

Ukoke Tech. does not warrant that the appliance will work properly in all environmental conditions, and makes no warranty and representation, either implied or expressed, with respect to the quality, performance, merchantability, or fitness for a particular purpose other than the purpose identified within this user's manual. Ukoke Tech. has made every effort to ensure that this user's manual is accurate and disclaims liability for any inaccuracies or omissions that may have occurred. Information in this user's manual is subject to change without notice and does not represent a commitment on the part of Ukoke Tech Co.. Ukoke Tech. reserves the right to make improvements to this user's manual and/or to the products described in this user's manual at any time without notice. If you find information in this manual that is incorrect, misleading, or incomplete, please contact us at **909-606-4551**.

Email: service@ukoke.com
Ukoke Tech.
19575 East Walnut Drive South, Unit C16,
City of Industry, California 91748

TROUBLESHOOTING

ISSUE	POSSIBLE CAUSE	SOLUTION
Unit does not start when pressing ON/OFF button	A. FT appears in the display window B. Room temperature is lower than set temperature (cooling mode) C. Off-timer function is activated D. Power plug is not inserted to outlet	A. Drain the water in the bottom tray B. Reset the temperature C. Restart after 3 minutes D. Re-plug to outlet
Not cool enough	A. The windows or doors in the room are not closed B. There are heat sources inside the room C. Exhaust air duct is not connected or blocked D. Temperature setting is too high E. Air filter is blocked by dust F. The unit will take approx 3 minutes of operation before cooling/heating occurs.	A. Make sure all the windows and doors are closed B. Remove the heat sources if possible C. Connect the duct and make sure it can function properly D. Decrease the set temperature E. Clean the air filter F. A Microprocessor control delays the compressor from operating until 3 mins have passed.
Not warm enough	A. The windows or doors in the room are not closed B. Temperature setting is too low C. Air filter is blocked by dust D. Exhaust air duct is not connected or blocked	A. Make sure all the windows and doors are closed B. Decrease the set temperature C. Clean the air filter D. Connect the duct and make sure it can function properly
Noisy or vibration	A. The surface is not level or not flat enough	A. Place the unit on a flat, level surface if possible
Gurgling sound	A. The sound comes from the flowing of the refrigerant inside the air-conditioner	A. It's normal
Unit stops operating	A. E4 appears in display window B. FL appears in display window	A. Unit is in defrost mode and will rest automatically once excess frost has been removed B. Empty the internal water tank

SAFETY INFORMATION

⚠ DANGER DANGER - Immediate hazards which WILL result in severe personal injury or death	⚠ WARNING WARNING - Hazards or unsafe practices which COULD result in severe personal injury or death	⚠ CAUTION CAUTION - Hazards or unsafe practices which COULD result in minor personal injury
--	---	---

IMPORTANT SAFETY INSTRUCTIONS

⚠ WARNING

When using electrical appliances, basic safety precautions should be followed, including the following

- Proper grounding must be ensured to reduce the risk of shock and fire. **DO NOT CUT OR REMOVE THE GROUNDING PRONG.**
- Do not operate air conditioner if power cord is frayed or otherwise damaged. Avoid using it if there are any cracks or abrasion damage along the length, plug connector or if the unit malfunctions or is damaged in any manner. Contact an authorized service technician for examination, repairs or adjustments.
- DO NOT USE AN ADAPTER OR AN EXTENSION CORD.**
- Do not block airflow around the air conditioner. The exhaust hose should be free of any obstructions.
- Always unplug the air conditioner before servicing it or moving it.
- Do not install or use the air conditioner in any area where the atmosphere contains combustible gases or where the atmosphere is oily or sulphurous. Avoid any chemical coming in contact with your air conditioner.
- Do not place any object on the top of the unit.
- Never operate the air conditioner without filters in place.
- Do not use the air conditioner near a bathtub, shower or wash basin.



Your portable air conditioner is supplied with a Leakage-Current Detection and Interruption (LCDI) safety plug. This device provides protection to reduce the risk of fire due to arcing faults in the power supply cord. Before using your portable air conditioner, follow the instructions below to ensure that the LCDI plug is working properly:

- Plug the power cord to a grounded outlet.
- Press the TEST button on the LCDI plug. This should trip the plug and cut the power to the air conditioner. If the plug does not trip and you are able to turn on the unit, please contact technical support.

DO NOT USE YOUR PORTABLE AIR CONDITIONER IF THE TEST FAILS. Press the RESET button to start using your air conditioner. Do not use the TEST and RESET buttons as an ON/OFF switch.

SAVE THESE INSTRUCTIONS
HOUSEHOLD USE ONLY

SAFETY INFORMATION





SAFETY GUIDELINES

To prevent injury to the user or other people and property damage, the following instructions must be followed. Incorrect operation due to ignoring of instructions may cause harm or damage.

ALWAYS DO THIS	NEVER DO THIS	ENERGY SAVE
<ul style="list-style-type: none"> Your air conditioner should be used in such a way that it is protected from moisture. e.g. condensation, splashed water, etc. Do not place or store your air conditioner where it can fall or be pulled into water or any other liquid. Unplug immediately. Always transport your air conditioner in a vertical position and stand on a stable, level surface during use. Turn off the product when not in use. Always contact a qualified person to carry out repairs. If the supply cord is damaged it must be repaired by a qualified technician. Keep an air path of at least 20 inches. all around the unit from walls, furniture and curtains. If the air conditioner is knocked over during use, turn off the unit and unplug from the power supply immediately. 	<ul style="list-style-type: none"> Do not operate your air conditioner in a wet room such as a bathroom or laundry room. Do not touch the unit with wet or damp hands or when barefoot. Do not press the buttons on the control panel with anything other than your fingers. Do not remove any fixed covers. Never use this appliance if it is not working properly, or if it has been dropped or damaged. Never use the plug to start and stop the unit. Always use the switch on the control panel to start or shut off the unit. Do not cover or obstruct the inlet or outlet grilles. Do not use hazardous chemicals to clean or come into contact with the unit. Do not use the unit in the presence of inflammable substances or vapour such as alcohol, insecticides, petrol, etc. Do not allow children to operate the unit unsupervised. Do not use this product for functions other than those described in this instruction manual. 	<ul style="list-style-type: none"> Use the unit in the recommended room size. Locate the unit where furniture cannot obstruct the air flow. Keep blinds/curtains drawn. Keep the filters clean. Keep doors and windows closed to keep cool air in and warm air out.

TROUBLESHOOTING

Troubleshoot your problem by using the chart below. If the air conditioner still does not work properly, contact Ukoke Tech. customer service center or the nearest authorized service center. Customers must never troubleshoot internal components

Error Code	Self-Diagnosis
	Coil Temperature sensor failure (Contact the customer service)
	Indoor temperature sensor failure (Contact the customer service)
	AC unit water tank full - Empty the internal water tank, following the instruction in the Cleaning and Maintenance section
	Anti-freeze protection - When the coil temperature is below 32°F, the whole unit will stop. When the coil temperature rises to 46°F or more, the machine will restore to its original work state.

TROUBLESHOOTING

BEFORE YOU CALL FOR SERVICE

IF THE AIR CONDITIONER FAILS TO OPERATE:

- A) Check to make sure that the air conditioner is plugged in securely. If it is not, remove the plug from the outlet, wait 10 seconds and plug it in again securely.
- B) Check for a blown circuit fuse or a tripped main circuit breaker. If these seem to be operating properly, test the outlet with another appliance.

IF NONE OF THE ABOVE SOLVES THE PROBLEM, CONTACT A QUALIFIED TECHNICIAN. DO NOT TRY TO ADJUST OR REPAIR THE AIR CONDITIONER YOURSELF.

CUSTOMER SERVICE IMPORTANT

If you have a problem with this product, please contact the Ukoke Tech. Customer Satisfaction Center at 909-606-4551

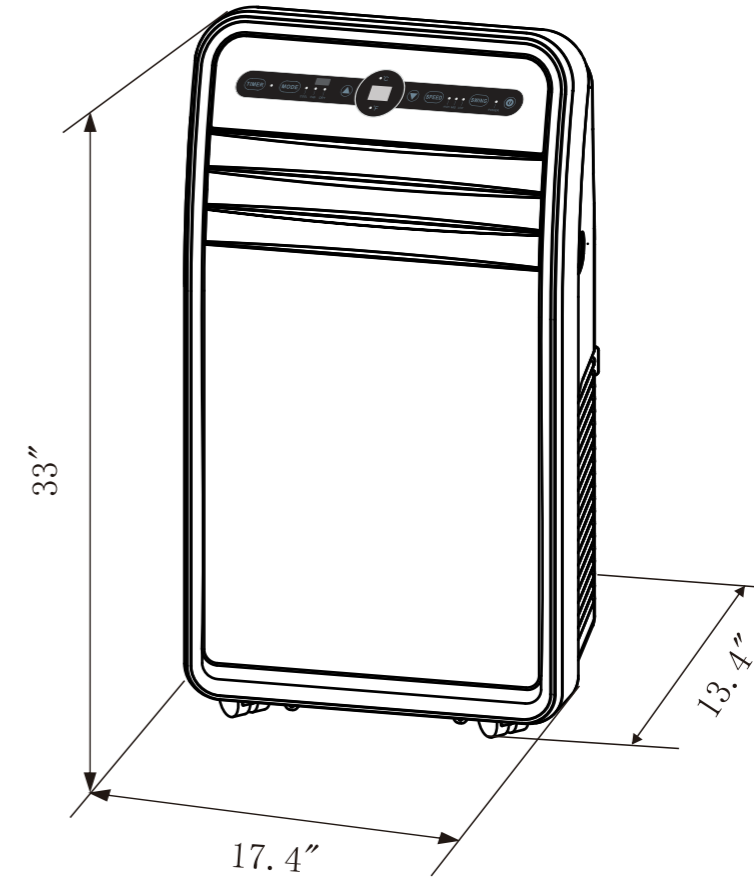
Machine Dimensions

SPECIFICATIONS

Pack Dimensions (W x D x H): 19" x 17" x 35"

Electric Requirement: 115V~60Hz

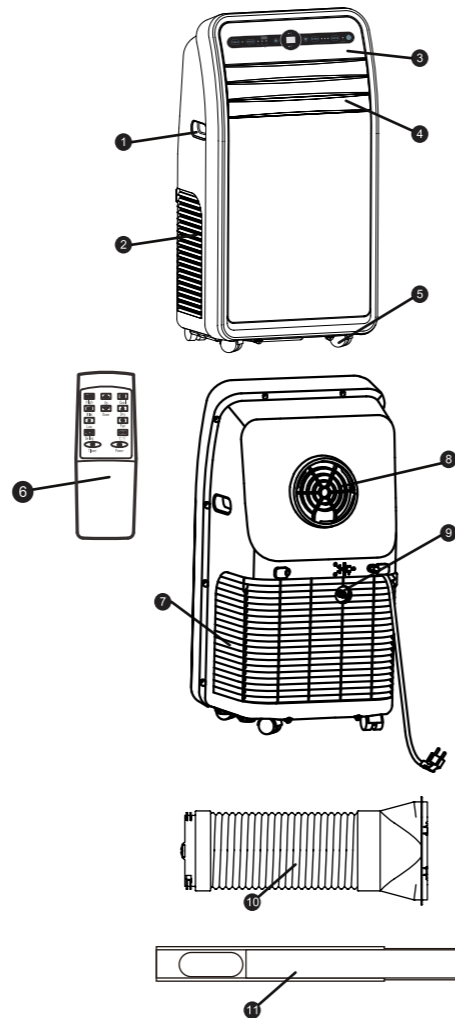
Weight: 73lbs



Parts Description

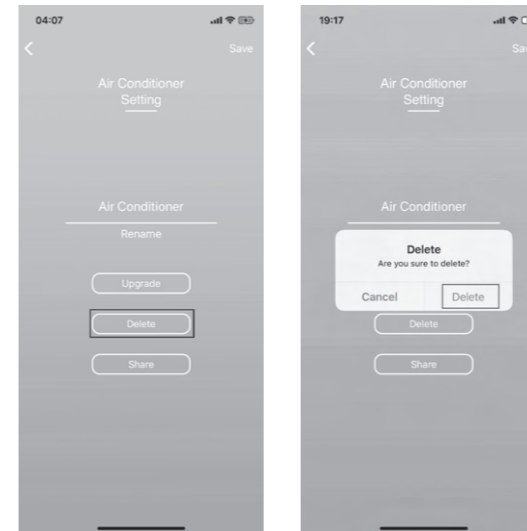
Main Components

1. Handle
2. Side Grill
3. Control Panel
4. Air Outlet
5. Wheels
6. Remote Control
7. Back Grill
8. Exhaust Outlet
9. Drainage cap, Drain Plug
10. Exhaust Hose
11. Window Bracket Kit



Mobile App Control

Press **Delete** to delete the connected device



Click "Settings" Icon Select **Share**

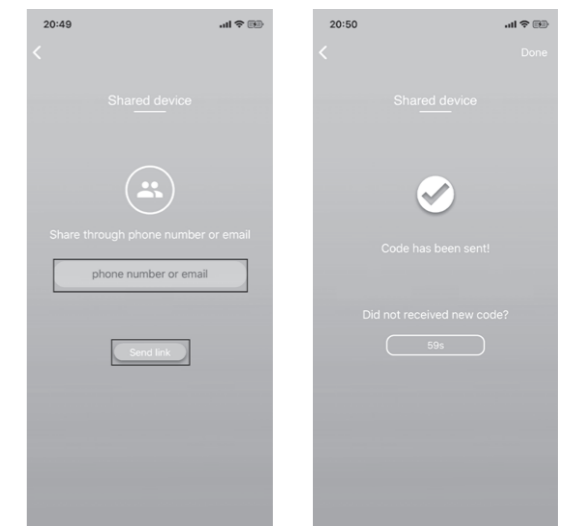


Share the Device

(Your family members can control the devices after shared)

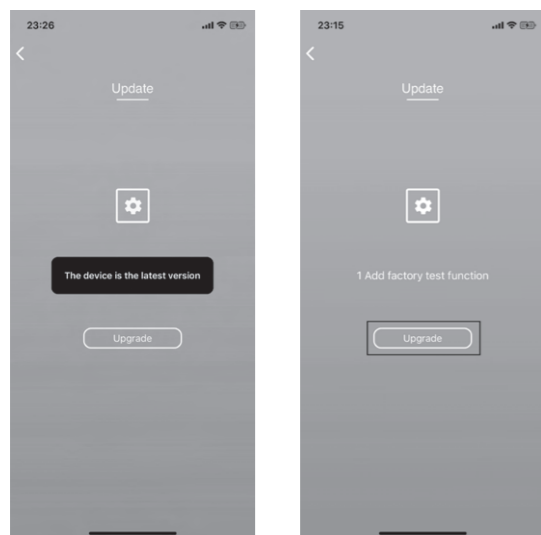
Click Air Conditioner icon on home page into control panel

Type in a phone number or email address that you would like to share device to and click **Send link** to complete share.



Mobile App Control

If the software is updated to the latest version, the mobile screen will pop-up "This device is the latest version"



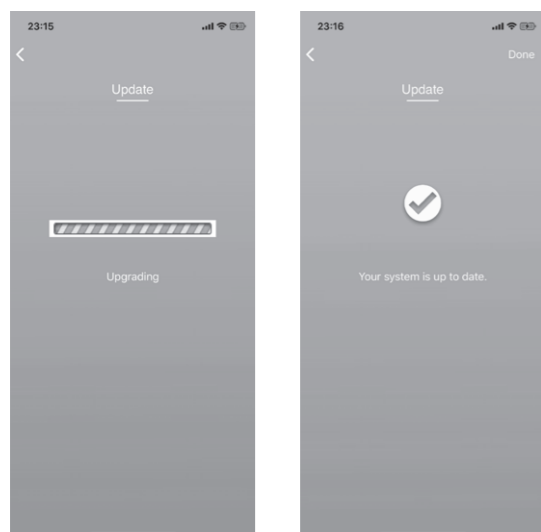
11. To Delete Device from the App

Click Air Conditioner icon on home page into control panel

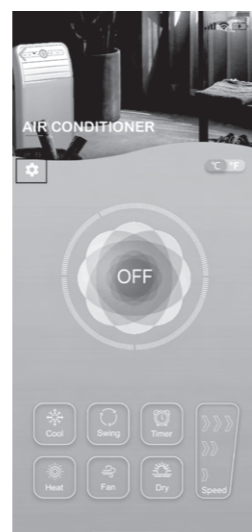


(*Only If you want to delete the App)

Be sure the mobile device upgrade is completed properly. DO NOT access any other app when installing.



Press "Settings" Icon, into settings page

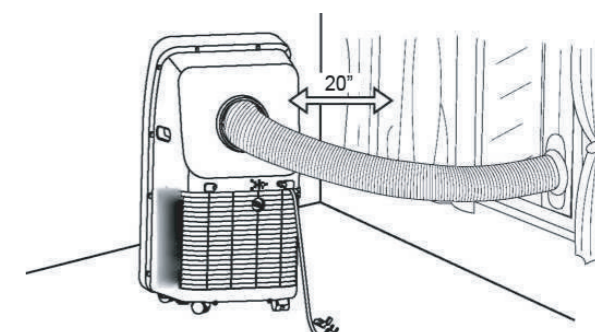


Product Usage

Placement and Installation

Placement

- Place the machine on flat floor near a window;
- To ensure optimal efficiency, the machine should be about 20-inches away from the window.

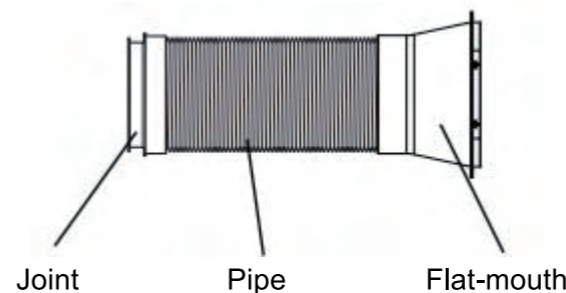


Keep air conditioner upright to allow the refrigerant to stabilize.

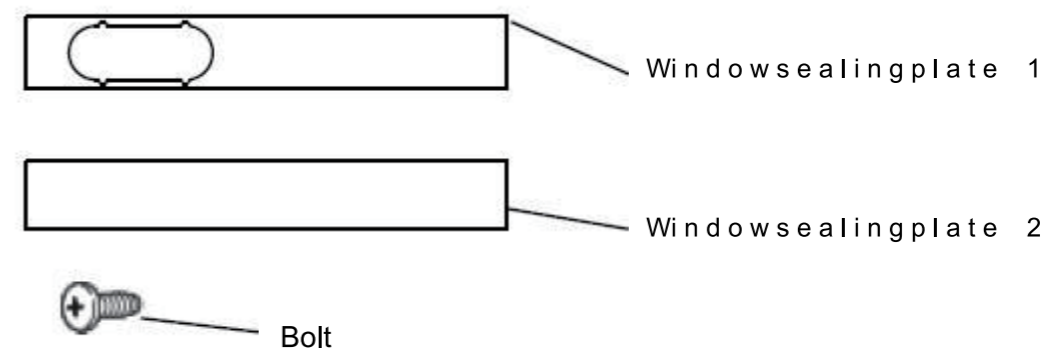
The space between the air conditioner and its surrounding objects should be about 20 inches.

Installation

ExhaustHose Connector



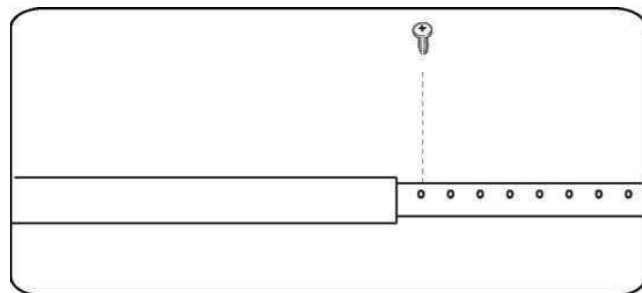
WindowBracket Kit Assembly



SUGGESTED TOOLS FOR WINDOW KIT INSTALLATION

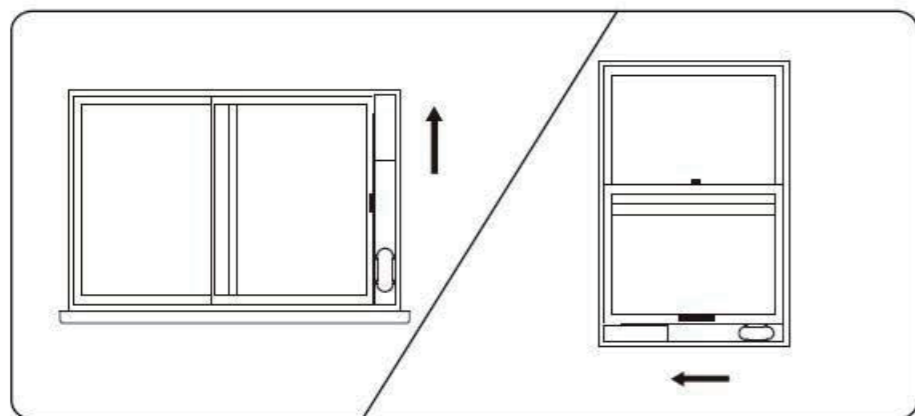
- Screwdrivers
- Tape measure or ruler
- Knife or scissors
- Saw (In the event that the window kit needs to be cutdown in size because the window is too narrow for direct installation)

Product Usage



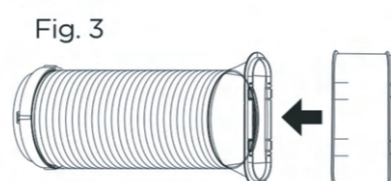
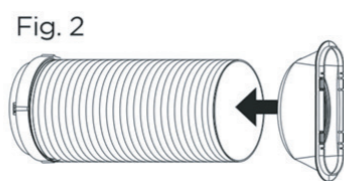
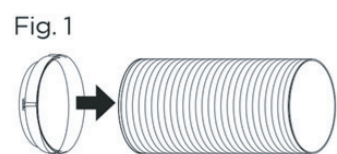
Step 1:

- (1) Measure window size
- (2) Adjust the length of the window sealing-plate to fit the width or height of your window
- (3) After the length is determined, insert screw to fix at your desired position



Step 2: EXHAUST HOSE INSTALLATION

1. Connect hose inlet to one end of air exhaust hose. Push hose inlet over the end of the hose, push in slightly and then start threading it on in a counter clockwise direction. (see Fig.1)
2. Connect hose outlet to other end of air exhaust hose. Push hose outlet over the end of the hose, push in slightly and then start threading it on in a counter clockwise direction. (see Fig.2)
3. Align window bracket/air intake hose connector with hose outlet and push in until it locks into place. You will hear a clicking sound when it does. (see Fig.3)



Mobile App Control

10. Software Update to latest version

Click Air Conditioner icon on home page into control panel

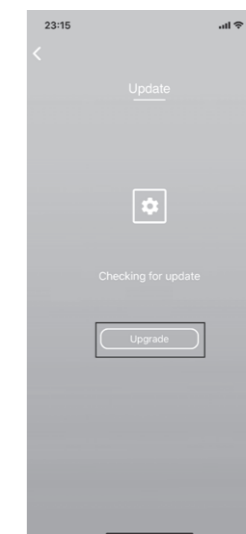
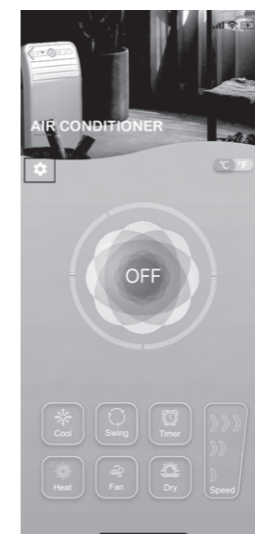


Keep AC unit plugged in;
Press **Upgrade**



Click "Settings" Icon on upper middle left

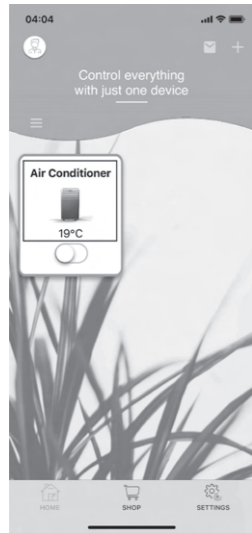
In the update page, press **Upgrade** again



Mobile App Control

9. Rename UKOKE AC on mobile device

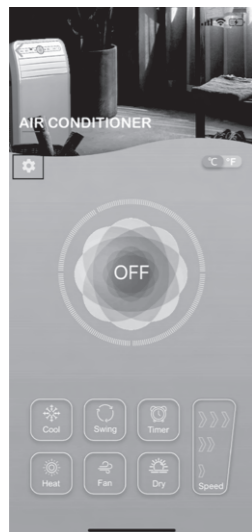
Click Air Conditioner icon on home page into control panel



Press the name bar (default as **Air Conditioner**) to rewrite to your own device name, ex. "AC", and click **Save**



Select "Settings" Icon on upper middle left

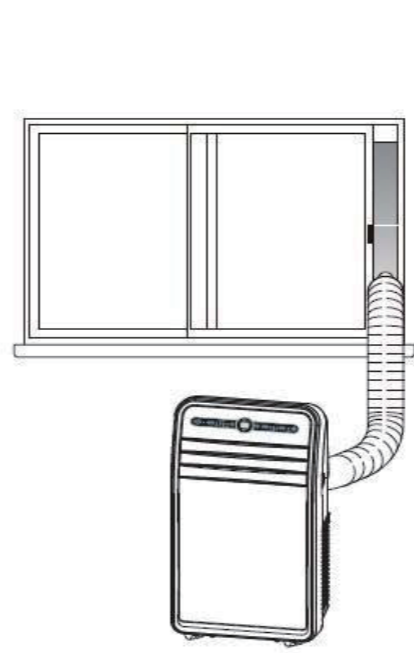
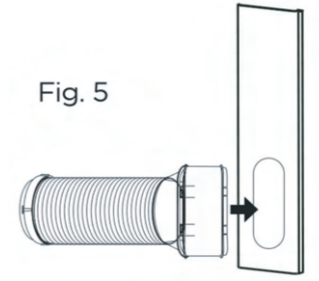
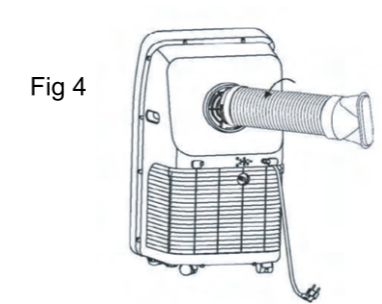


The device name will show on your Home Page

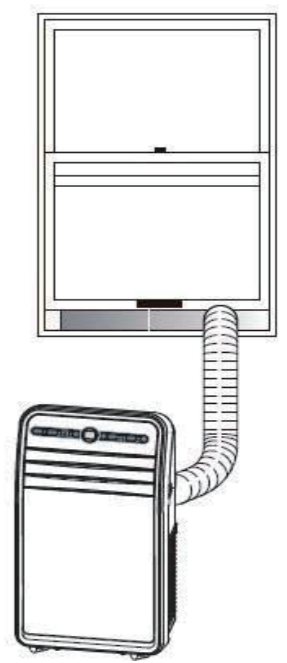


Product Usage

- Place the hose inlet against the air outlet opening hook on the back of the portable air conditioner and firmly push and rotate counter clockwise to lock it into place. (see Fig.4)
- After connecting the hose inlet to the unit, insert the window bracket/air intake hose connector into the opening of the window bracket. Align connector with the opening on the inside (side with the channels) of the window bracket and push in until it locks into place. You will hear a clicking sound when it does. (see Fig.5)



Vertical window

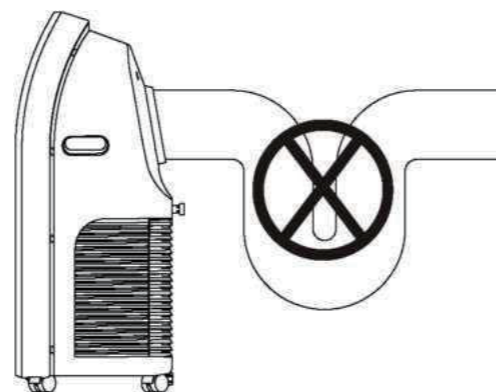


Horizontal Window

Product Usage

Incorrect installation

- Do not bend the exhaust hose (shown here). A bent hose will block exhaust air and cause the unit to malfunction or shut-off.



Warning:

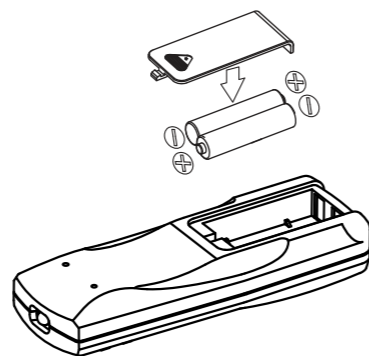
The length of the exhaust hose is specifically designed for this model. Do not replace or lengthen it as it could cause the unit to malfunction.

Note:

The maximum length of the exhaust hose is approximately 5-ft. Shorten its length as much as possible in use.

Remote Control

Before using the remote control, please install batteries correctly.



CAUTION:

Use only AAA batteries. Remove the batteries if the remote control will not be used for one month or longer. Do not attempt to recharge batteries not designed to be recharged. All batteries should be replaced at the same time. Do not mix old and new batteries. Do not dispose of batteries in a fire as they may explode.

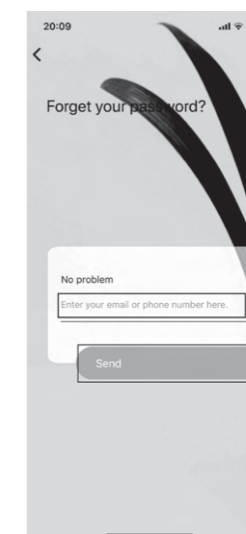
Mobile App Control

7. Temperature Display

Air Conditioner Mobile App can apply temperature display from **C** (Celsius) to **F** (Fahrenheit) by selecting the temperature icon on the upper middle right portion of the screen



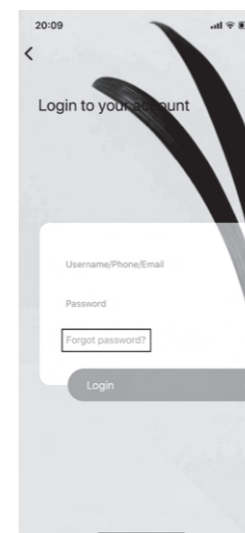
Enter your phone number or email address registered with UKOKE, then press send to receive verification code



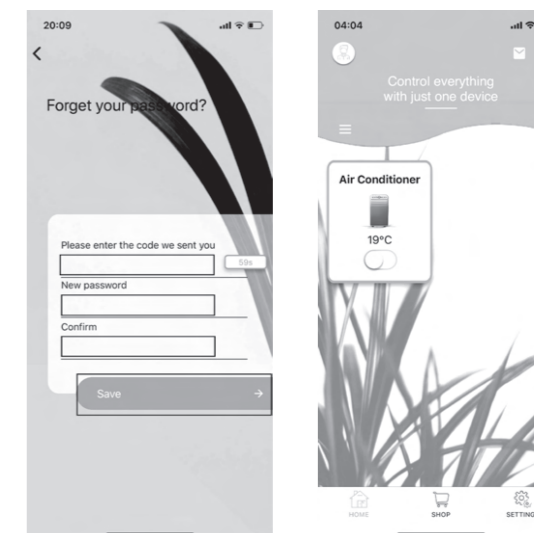
Device Settings

8. Forgot Password

Press Forgot Password



Enter the verification code, New password, Confirm Password before you save it. Code will reset in 59 seconds

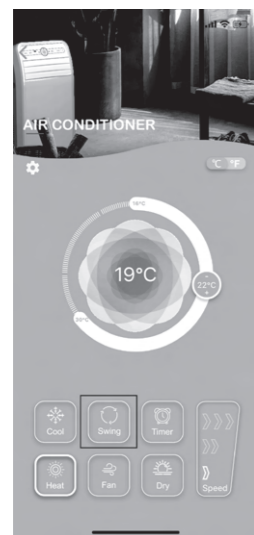


(*Reference QUICK SETTING GUIDE 11.1)

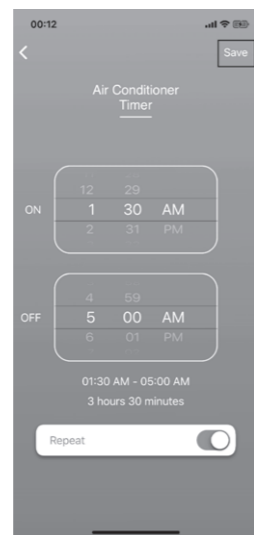
Mobile App Control

4. Rotation Settings

Once the portable AC is "ON", select the **Swing** icon in any mode to toggle device rotation



Put your **ON** and **OFF** times to set the Air Conditioning Device to turn On/Off in the specified times. (Select the **Repeat** toggle to maintain the timer schedule.)




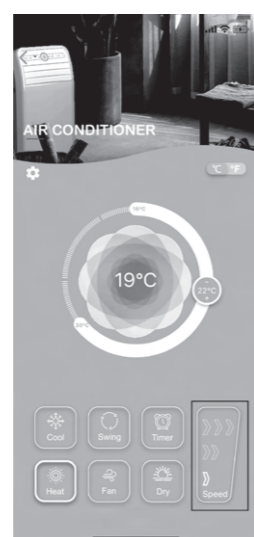
5. Air Conditioner Timer Setting

Press **Timer** on the control panel



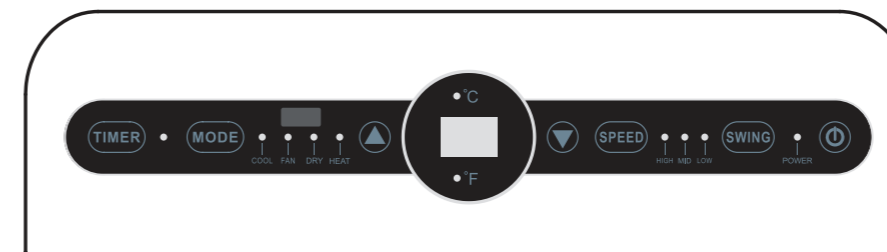
6. Speed Settings

Use  to change the 3-Speed settings under mode of Cool/Heat/Swing. (Note: Fan speed will be at minimum and unadjustable under Dehumidifier mode.)

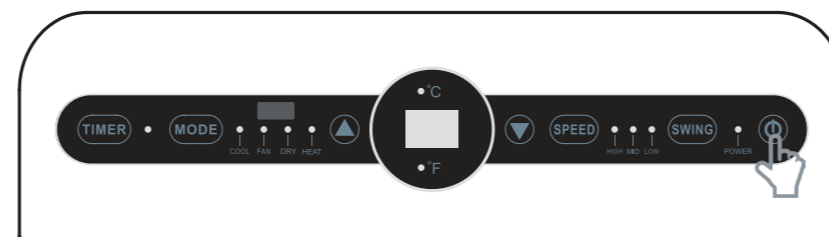



Control Panel and Remote Controller User Manual

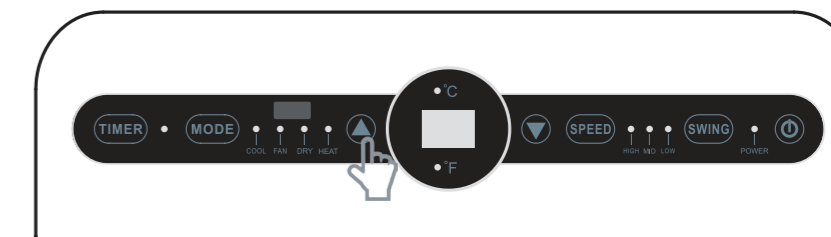
The display shows the temperature and time.




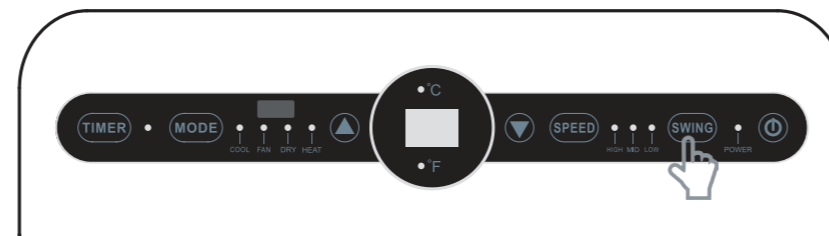
Press  / ① on remote control to turn On/Off the device




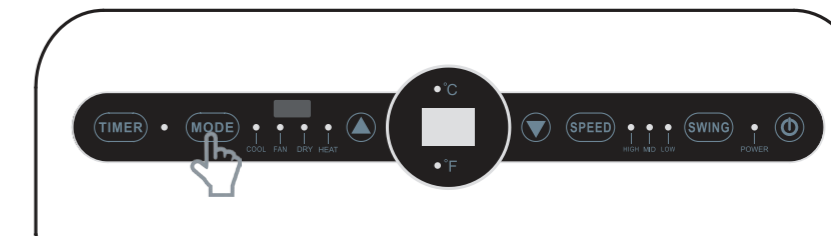
Press up  / ④ Up on remote control to increase temperature




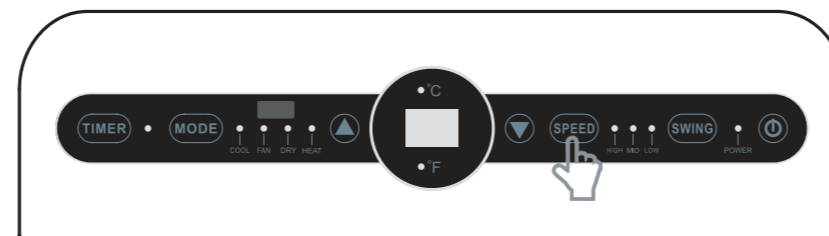
Press  / ② on remote control for rotation settings




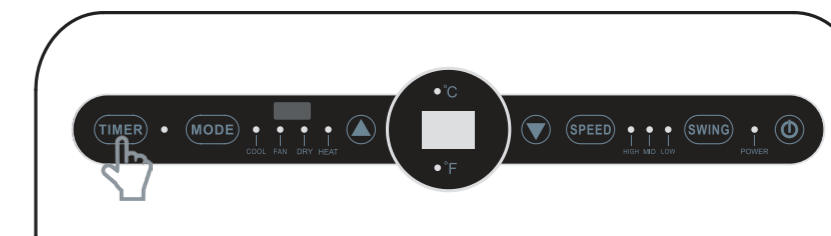
Press  / ⑤ on remote control to change functions (Fan / Cooling / Heating / Dry)




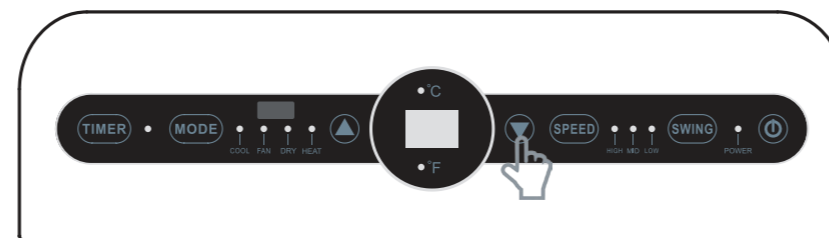
Press  / ③ on remote control for 3-speed adjustment (High, Mid, Low)


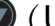


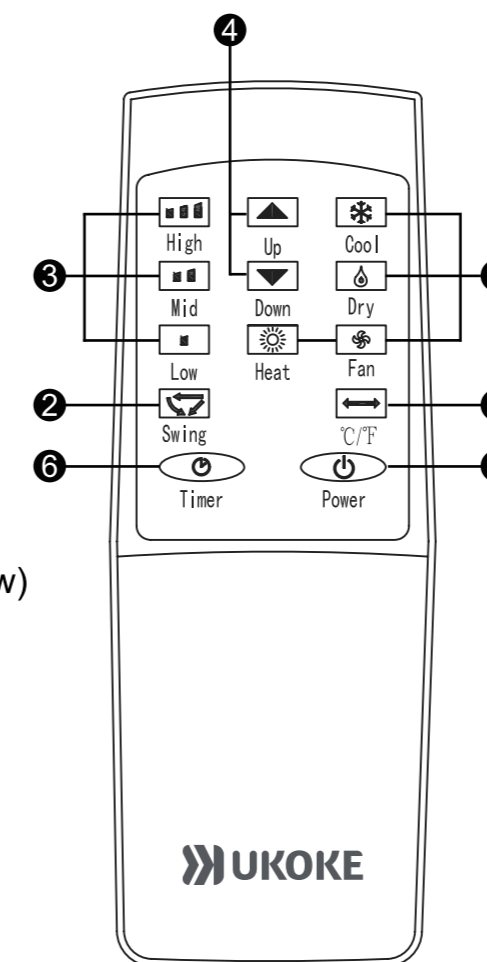
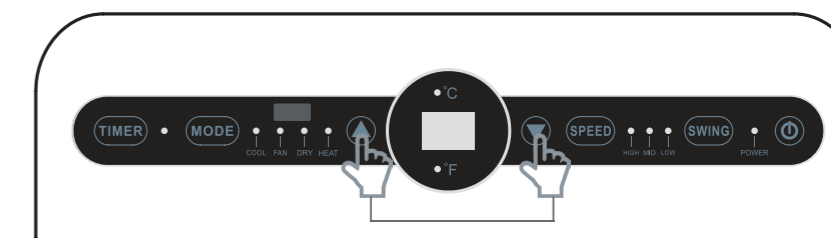
Press  / ⑥ on remote control for ON/OFF timer settings (Then press Up/Down button to adjust and apply your settings)



Press down  / ④ Down on remote control to lower temperature



Press temperature  +  (Up and Down buttons at the same time) / ⑨ on remote control to change "F->C" or "C->F"



Operating the Control Panel

Use the Power button to turn the portable air conditioner on and off.

Power Auto-Restart: If power to the unit is interrupted, the air conditioner will restart itself in its last used mode/settings once power is restored. The compressor will restart after 3 minutes.

Cooling mode Cools and dehumidifies the air. If the ambient temperature drops below the temperature you selected, the compressor turns off and the unit functions with the fan only. When the temperature rises above the temperature you selected, the compressor turns on again. Whether your desired temperature can actually be reached depends on the ambient conditions. The room temperature remaining above the set temperature is normal.

To operate the unit in cooling mode:
 1) Press the Mode button until the **Cool** indicator lights up.
 4) Select the fan speed by using the Fan button.
 5) Set the thermostat by using the Up and Down buttons. The thermostat is adjustable between 62°F - 86°F in two degree increments.

Heating mode If the ambient temperature goes above the temperature you selected, the compressor turns off and the unit functions with the fan only. When the temperature drops below the temperature you selected, the compressor turns on again. Whether your desired temperature can actually be reached depends on the ambient conditions. The room temperature remaining above the set temperature is normal.

To operate the unit in heating mode:
 1) Press the Mode button until the **Heat** indicator light up.
 4) Select the fan speed by using the Fan button.
 5) Set the thermostat by using the Up and Down buttons. The thermostat is adjustable between 62°F - 86°F in two degree increments.

Dry/ Dehumidifying mode During the Dry mode, the unit will condense water out of the air and accumulate the water in the reservoir. In this mode, you will not be able to select a different fan speed or adjust the temperature. The fan motor operates at Low speed.

To operate the unit in Dry mode:
 1) Remove the exhaust hose from the back of the unit. Otherwise, the dehumidification feature will be ineffective or FL (water full) error may occur.
 2) Press the Mode button until the **Dry** indicator light up.

Note: While in Dry mode, the ambient temperature in the room will probably rise by a few degrees. You will not be able to change the thermostat temperature while in Dry Mode. Keep windows and doors closed for the best dehumidification performance.

Operating the Control Panel

Fan Mode Fan Mode is used to circulate the air in your room. No temperature setting is needed.

To operate the unit in Fan Only mode:
 1) Press the Mode button until the Fan indicator light up.
 2) Press the Fan button to select the fan speed. You can choose between High, Medium and Low. The speed indicator light will up.

Note:
 1) Fan mode requires that the exhaust hose be removed.
 2) The Fan feature is used to change the fan speed between High, Medium, and Low while in Cooling, heating and Fan modes only.

Timer Setting The timer can be used to either turn the unit on or off after a number of elapsed hours. The timer is adjustable between 1-24 hours in one hour increments.

How to set the unit to automatically turn on:
 1) Press the Timer button while the unit is powered off. The Timer indicator light will up.
 2) Use the Up and Down buttons to set the time (displayed in hours). The unit will count down the time remaining. After the selected time passes, the unit will automatically turn on.

How to set the unit to automatically turn off:
 1) Press the Timer button while the unit is powered on. Timer indicator light will up.
 2) Use the Up and Down buttons to set the time (displayed in hours). The unit will automatically count down and turn off after the selected time elapses.

Note: To cancel the timer, press the Power/ Timer button

Swing mode The Swing Button is used to adjust the louver swing to the desired angle.

Mobile App Control

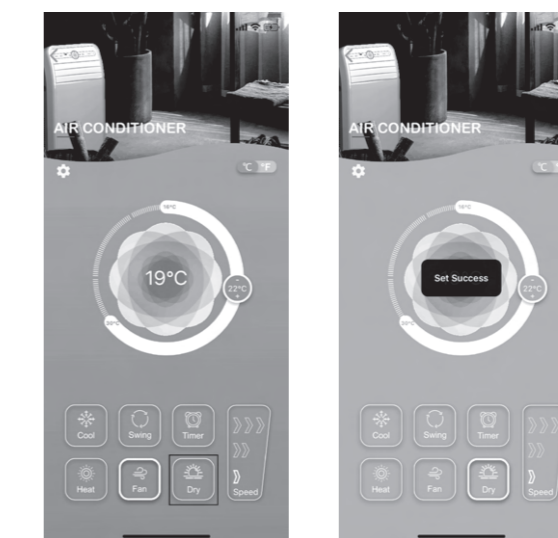
Fan Function Select the **Fan** icon on the control panel (Temperature Setting will Disable)



Cooler Function Press the **Cool** icon on the control panel



Dehumidify Function Press the **Dry** icon on the control panel (Temperature Setting will Disable)



3. Temperature Settings When the Air Conditioner is "ON" in cooler or heater mode, slide the temperature icon (on the left side of your screen) up and down to control the temperature. (Note: Temperature control can only be used in Cooler or Heater mode)

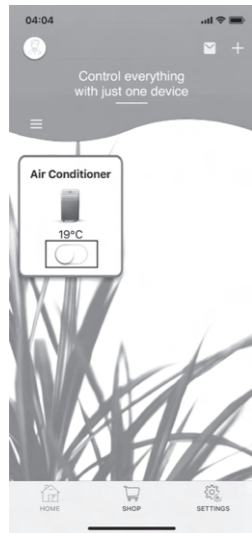


Mobile App Control

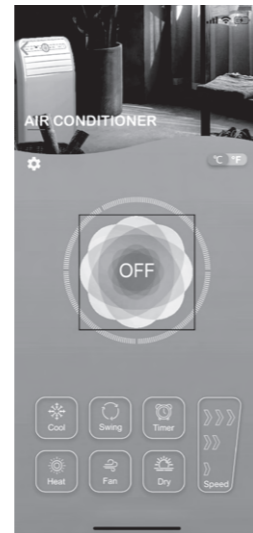
Using the mobile App remote the Portable Air Conditioner

Power Button

Turning the Portable AC ON/OFF by clicking the switch button in the frame on the home page

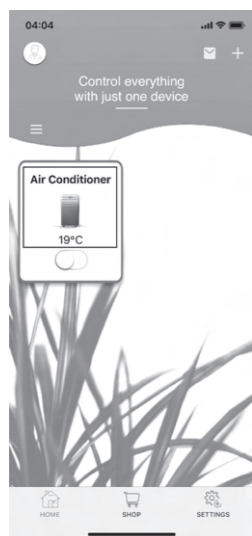


Click the icon on the center of the page to toggle ON/OFF



1. Control Button

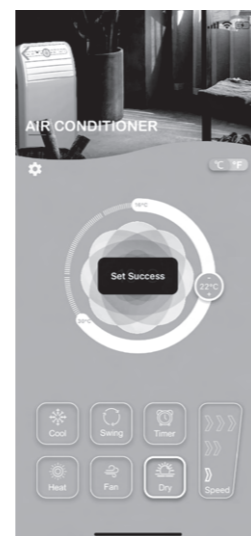
Click on the Air Conditioner icon to enter the control page



2. Mode switching

Heat Function

Press Heat icon on the control panel



Cleaning and Maintenance Drainage Method

The product comes with an automatic water evaporation system, which improves the cooling efficiency while saving energy. If the machine's water container is full, the display screen will show "FL" accompanied by an audible alarm, and the compressor will stop working automatically. At this point, water needs to be discharged. Discharging steps are follows:

1. Unplug the power cord and remove the exhaust hose assembly
2. Disconnect the plug in drainage cap to drain the water inside the machine (Fig6)
3. Connect a drain hose to the drain port (You may need to purchase a drain hose separately) The portable air conditioner will now drain through the drain hose. Please note that this unit has no drain pump; all water will drain with gravity only (Fig7)
4. Re-plug the drainage cap well

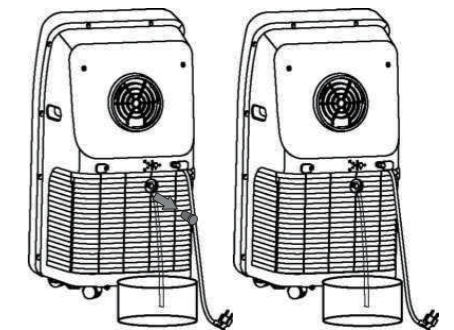


Fig 6

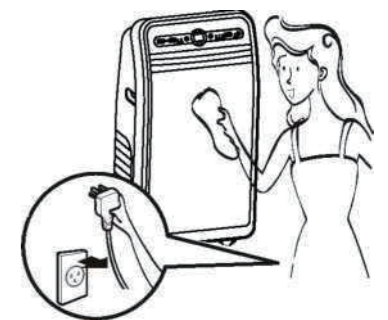
Fig 7

Maintenance

Note: To avoid electrical shock, turn off the conditioner and pull the plug out before conducting maintenance and repair.

Frame Cleaning

1. Pull the plug before cleaning
2. Wipe with a soft cloth. Do not use chemicals, such as benzene, alcohol, gasoline, etc. to avoid damaging the machine's surface
3. Do not let water splash onto the machine



Cleaning and Maintenance Drainage Method

Cool effect reduces if there is dust build-up. It is recommended to clean the filter screen once every two weeks. Cleaning frequency depends on your indoor air quality. Specific cleaning steps are as follows:

1. Remove the back grill and then filter screen in the direction shown in the picture below (Fig 8,9,10)
2. Clean the filter screen with a vacuum or in warm water (Fig 11,12)
3. Reinstall the clean filter screen
4. Restart the machine

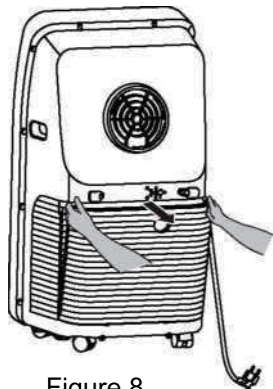


Figure 8

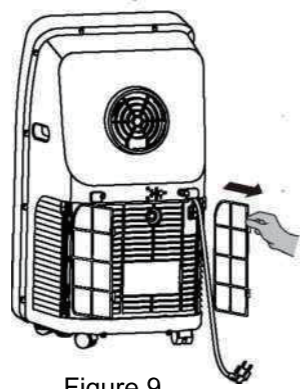


Figure 9

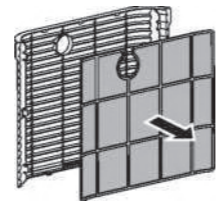


Figure 10

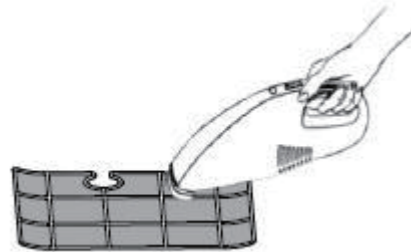


Figure 11

If the filter screen is not very dirty, use a vacuum cleaner to remove the dust.

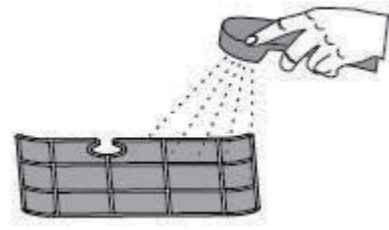


Figure 12

If the filter is very dirty, clean it with water or warm water.

Note:

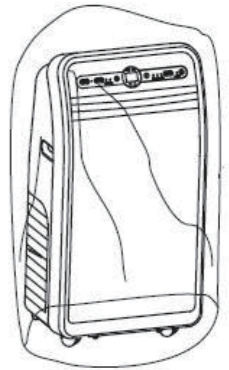
1. Use warm water to clean the filter screen. Do not use harsh detergents (such as alcohol, petrol, benzene etc).
2. In order to avoid damaging the filter screen, keep it away from heat and put it in a dry place.

Cleaning and Maintenance Drainage Method

Seasonal Maintenance

If the machine will not be in use for up to 3 months, follow these guidelines to maintain your AC unit:

- Pull out the drainage cap to drain out the water (Fig.6)
- Keep the machine working for 2 hours in the air distribution mode until the inside becomes dry
- Turn off AC and disconnect power
- Clean up the filter screen (please read the Fig. 8-12)
- Remove the window seal panel from the window and disconnect the exhaust hose from the seal panel, and storage all accessories
- Remove the batteries from the remote control
- Coating a plastic bag to keep the AC unit dry
- Avoid direct sunlight



To reinstate the idle machine, take note the following:

1. Confirm whether the drainage cap and filter screen are correctly installed
2. Check whether the power cord is intact. Do not use the machine if there is any breakage.
3. Add batteries to the remote control.
4. Follow installation instructions to reinstall other parts.