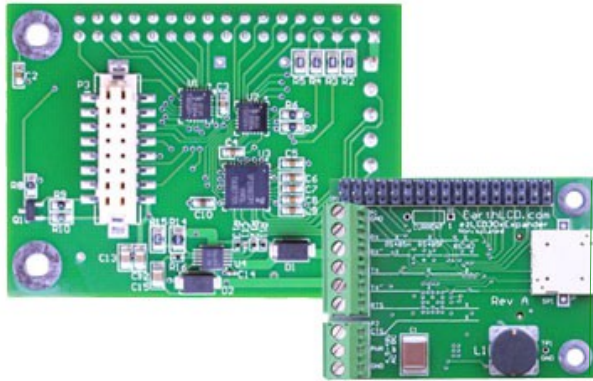


ezLCD-I/O Expander Board



Boost your signal, connectivity and power options with the ezLCD I/O Expander Board

Ideal for distributed control systems, point of information or signage display applications, the **I/O Expander Board** seamlessly connects to any ezLCD-3xx smart, touch LCD to create a fully integrated, managed display system.

As an accessory to the ezLCD family, the **I/O Expander Board** provides engineers multiple options for power, interface, number of I/O ports, signal distance, and utilization of audio feedback.

Interface options include: RS-232 and RS-485. RS-232 delivers signal strength up to 50', and RS-485 multi-drop connectivity distances of over one mile!

Production pricing available

Product Specifications:

When connected to any ezLCD-3xx product, the **I/O Expander Board**:

- Expands the power input range from 4.5v to 50v AC or DC
- Expands interface options by providing RS-485 (half and full duplex) and RS-232
- Delivers RS-485 multi-drop connectivity spanning over a mile, and RS-232 connectivity up to 50 feet
- Expands the number of I/O's to 26 - two analog, twenty-four digital
- Provides audio feedback via beeper



ezLCD-3xx Display Products:

ezLCD-301-QK – 2.6" Smart LCD with touchscreen
ezLCD-302 – 2.7" Sunlight readable, smart LCD
ezLCD-304 – 4.3" Smart LCD with touchscreen

ezLCD-3xx Options:

[ezLCD-5PMINUSB/TYP EA2.0-6'](#)

Type-A male to mini-B male



[ezLCD-3xx-EDK](#)

Kit Includes: EDK board, two USB 2.0 to mini USB cables, 3.7v lithium battery, standoffs, jumper shunts, screwdriver



© Copyright 2012, Earth Computer Technologies, Inc.
All trademarks are properties of their respective owners.