

**SCARE-AWAY M-8 MULTI-BANG CANNON ASSEMBLY & OPERATING INSTRUCTIONS**

Assembly & Operating Instructions	1-2
Troubleshooting	3
Schematic	4

(Print the Schematic separately in Landscape orientation)

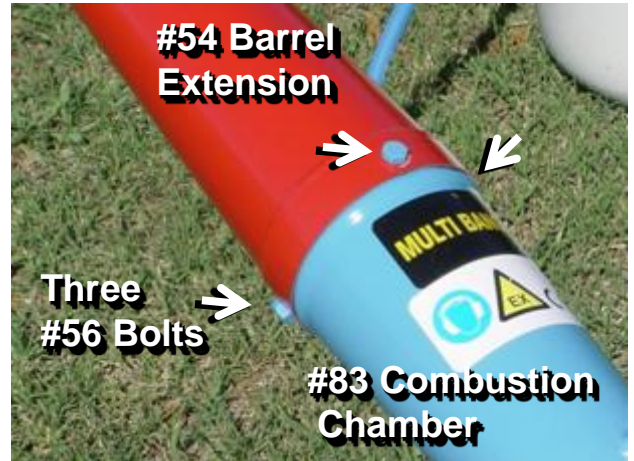


**1. Attach the Barrel Extension:**

After removing the Scare-Away from the shipping box, attach the barrel extension (#54) to the barrel of the combustion chamber (#83).

**Ensure that the weep hole faces the ground:**

Ensure that the welded section on the seam of the barrel extension is facing **down**, so that any water will drain from the weep hole just above it.



Tighten the three bolts (#56) with a 13 mm wrench.

**Important:**

These three bolts (#56) must be tight, or explosion pressure will damage the bolt connections on the combustion chamber (#83).

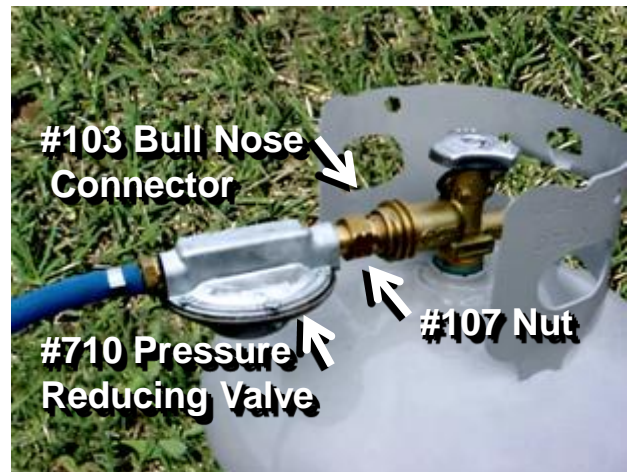


**2. Connect Scare-Away to LP Gas:**

With a full tank of LP gas, open the valve and allow a small amount of LP gas to escape; close the valve at once.

Connect the pressure reducing valve (#710) to the LP gas tank with the bull nose connector (#103).

**Ensure that the side with the label faces down,** so that any water will drain from the weep hole.



Tighten nut (#107) with a wrench.

■ **Please read the Safety Precautions on the next page** ■

**SCARE-AWAY M-8 MULTI-BANG CANNON ASSEMBLY & OPERATING INSTRUCTIONS**

**3. Adjust Firing Frequency:**

The time between a series of multi-bangs can be adjusted from approximately 45 seconds to approximately 15 minutes.

The frequency of firing can be adjusted with the needle valve on the left side of the Scare-Away frame.

Adjust the frequency to your requirements.



↶ **To increase firing frequency**, turn handle (#129) **counter-clockwise**, in the direction of the arrow on the dial (#139).

↷ **To decrease firing frequency**, turn the handle **clockwise**.

The Scare-Away M-8 Multi-Bang is equipped with a piezo ignition system (#922 in Schematic on page 4) that will produce at least 100,000 ignitions.

**To start the Scare-Away**, slowly open the valve of the LP gas tank. The Scare-Away will fire at the same frequency as previously set, without further adjustment.

**To stop the Scare-Away**, close the valve on the LP gas tank.

**SAFETY PRECAUTIONS**




**To prevent accidental detonations, bleed remaining fuel by disconnecting rubber tubing from needle valve.**

- Always use ear protection. ■ Never operate in or on a structure.
- Always place Scare-Away cannon on flat ground. ■ Use only original pressure reducing valve.
- Use only liquid propane (LP) gas. ■ No smoking or open flame near the Scare-Away Cannon.
- Change locations often. ■ Change rate of fire often.
- Cold temperatures and wind can adversely affect the Scare-Away cannon's performance.

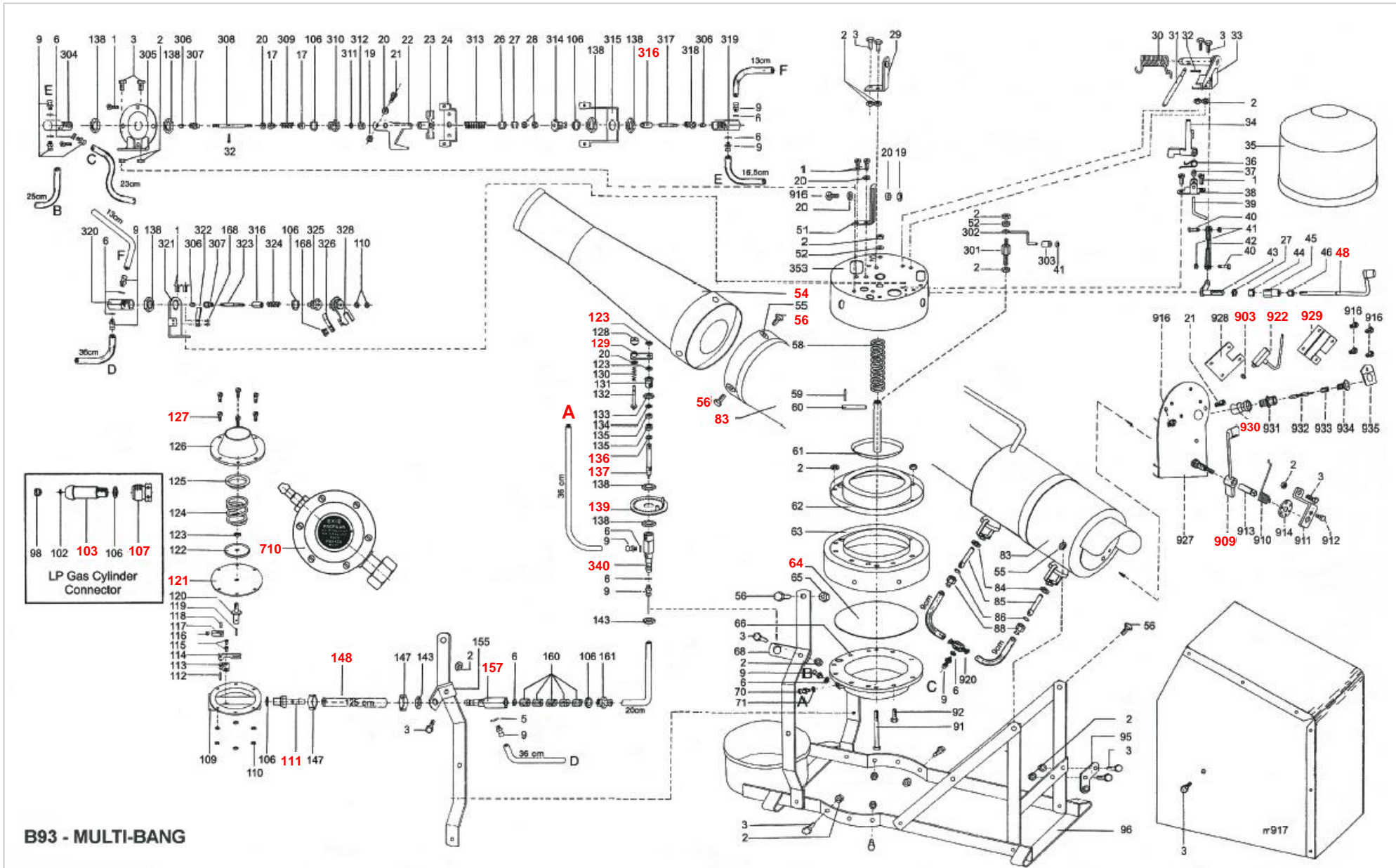
**WHEN NOT IN USE:** Store Scare-Away cannon in a dry, protected area. Protect the cannon muzzle with a suitable covering, to prevent debris or rodents from entering the barrel chamber, and **remove the covering before firing.**

**SCARE-AWAY M-8 MULTI-BANG CANNON - TROUBLESHOOTING**

<b>PROBLEM</b>	<b>CAUSE</b>	<b>REMEDY</b>
<b>FAILS TO OPERATE:</b> Scare-Away M-8, fully connected, fails to operate at all.	The LP gas cylinder valve is not open.	Open the valve.
	The LP gas cylinder is empty.	Replace fuel.
	The needle valve (#123-340) is not open.	By turning needle valve lever in direction of arrow, frequency of detonations will increase.
	The needle valve (#123-340) cannot be opened.	Replace needle (#137), or replace complete needle valve.
<b>LEAKS:</b>	The pressure reducer valve (#111-127) is not attached to the LP gas cylinder tightly enough.	Tighten the coupling nut (#107) with wrench.
	Check the following hoses for possible damage:  - hose (#148) from pressure reducer valve to the stuffer valve (#157) - hose (A) from the needle valve to base of the mechanical assembly - hose from stuffer valve to the mechanical assembly - hose from the stuffer valve to the needle valve.	Replace the appropriate hose.  
	Diaphragm (#121) in pressure reducer valve leaks.	Replace diaphragm, or replace complete pressure reducer valve.
	Diaphragm (#64) in mechanical assembly leaks.	Replace diaphragm.
	Rubber sleeve (#316) in gas release valve leaks.	Replace sleeve, or replace, complete gas release valve.
	Interior hose in gas release valve leaks.	Replace interior hose, or replace complete gas release valve.
<b>NO EXPLOSION:</b> Scare-Away M-8 operates, but there is no explosion.	Ignition gives a weak spark, or no spark at all.	Check impact capsule (#922) for wear.
		Check electrode tip (#930) for wear.
		Make sure shaft (#48) knob rests on left side of mallet flange (#909). Distance between shaft knob and mallet flange should be 1/8".
		Check entire sparking assembly (#903-929) for damage. Replace where necessary.
<b>DULL EXPLOSION:</b> Scare-Away M-8 works, but gives a dull explosion.	Wind is too strong and gas/air mixture is disturbed.	Place the Scare-Away M-8 out of the wind, or place the muzzle down-wind.
	Barrel extension (#54), or firing chamber (#83) contains debris.	Remove barrel extension. If there is debris in the barrel extension or firing chamber, remove debris.



**REED-JOSEPH INTERNATIONAL COMPANY**  
**SCARE-AWAY M-8 MULTI-BANG CANNON SCHEMATIC**



B93 - MULTI-BANG