

Caring for Your Protective Clothing

Editor's note: Our Tailgate Training Tip Sheets are [available in Spanish at www.gemplers.com](http://www.gemplers.com).

KEY POINTS:

- Always wear protective clothing when working with pesticides.
- Keep pesticide-contaminated clothing separate from your other clothing and from the family wash.
- Inspect personal protective clothing for damage each time you prepare to put it on.

Note to trainer: Follow this script or use it to help guide you through a 10- to 15-minute tailgate training session for your ag/hort workers. You may photocopy this sheet for your employees' personal use. However, it may not be published or sold.

Bring to your training session samples of the personal protective clothing used in your operation.

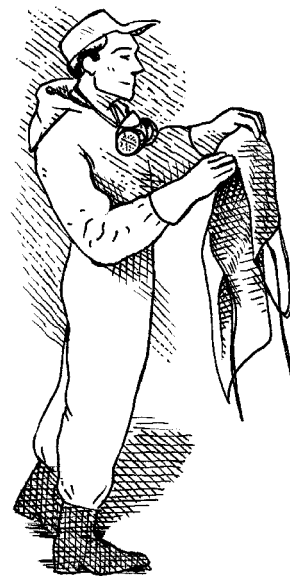
Why wear protective clothing?

- Personal protective clothing helps protect you from exposure to pesticides or other harmful chemicals. That's why it's important to keep your protective clothing in good condition.
- When working with pesticides, carefully read the product label to find out which protective clothing to wear. The law says you must wear at least the amount of protective clothing specified on the label.
- Some examples of [personal protective clothing](#) are coveralls, chemical-resistant gloves, chemical-resistant aprons, and chemical-resistant boots.
- The pesticide label may also require you to wear long-sleeved shirts and long pants.
- This is some of the protective clothing we use in our operation.

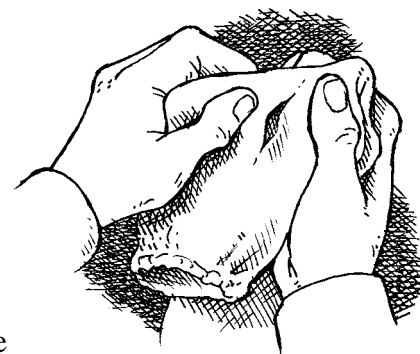
Note to trainer: Show trainees some personal protective clothing and tell them when it should be worn.

Inspecting protective clothing

- Carefully inspect personal protective clothing each time you prepare to put it on.
- When inspecting protective clothing, look for small holes, tears, cracks, changes in color, or any other damage.
- Never wear damaged protective clothing. If you notice any damage while you are working, immediately stop working and notify your supervisor.
- Thoroughly wash or shower before putting on replacement clothing.
- Be sure your protective clothing is clean and free of pesticides.
- Properly store your clean personal protective clothing after you have finished for the day.



Always read the pesticide label.



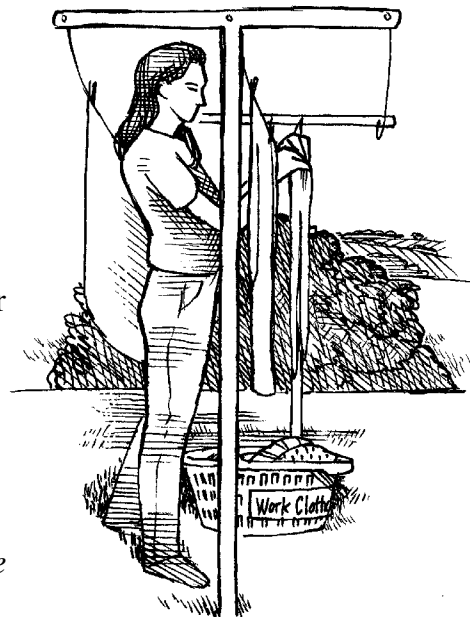
(Continued on back)

See our [full line of safety supplies](#), including respirators, eye and ear protection, coveralls, first aid and more.

Caring for Your Protective Clothing

Cleaning pesticide-contaminated clothing

- Even when you wear coveralls over regular work clothes, your work clothes can pick up small amounts of pesticides.
- That's why it's important to know how to properly clean contaminated work clothing.
- Here are a few tips:
 1. At the end of each workday, put your used work clothes in a container until they can be washed. Don't ride home in the clothes you wore while applying pesticides.
 2. Keep used work clothing away from family members and pets.
 3. Keep your work clothes separate from the other family wash. Wash them separately from any other laundry.
 4. Be sure to wear gloves when handling pesticide-contaminated clothing.
 5. Wash only a few items at a time.
 6. Use the highest water level setting on your washing machine.
 7. Use a heavy-duty [laundry detergent](#). And use hot water for the wash cycle.
 8. Rinse your clothes twice in warm water after the wash cycle is completed. Using two rinse cycles helps remove pesticide residues.
 9. If your clothes have a moderate to heavy amount of pesticides on them, run them through two complete washing machine cycles. However, if they are saturated with pesticides, don't wash them. Instead, see your supervisor for proper disposal instructions.
 10. If possible, hang your work clothes outside on a clothesline for 24 hours to dry. Don't put heavily contaminated clothing in a dryer because pesticide residues can build up in the dryer over time.
 11. Clean out your washing machine when you are done by running it through at least one complete cycle without any clothing in it. Use detergent and hot water.



Are there any questions?

Note to trainer: Take time to answer trainees' questions. Then review the **Protective Clothing Do's and Don'ts**.

PROTECTIVE CLOTHING DO'S AND DON'TS

DO:

- Wear clean protective clothing each day.
- Keep contaminated clothing separate from your other clothing and from the family wash.
- Stop working and notify your supervisor if you notice a tear or other damage to your personal protective clothing. Replace damaged clothing immediately.

DON'T:

- Wash protective clothing that has been saturated with pesticides. Instead, see your supervisor for proper disposal instructions.
- Touch pesticide-contaminated clothing with your hands or any other bare skin.
- Store clean protective clothing with contaminated clothing, near pesticides, or in a dirty area such as on a workbench.

See our [full line of safety supplies](#), including respirators, eye and ear protection, coveralls, first aid and more.