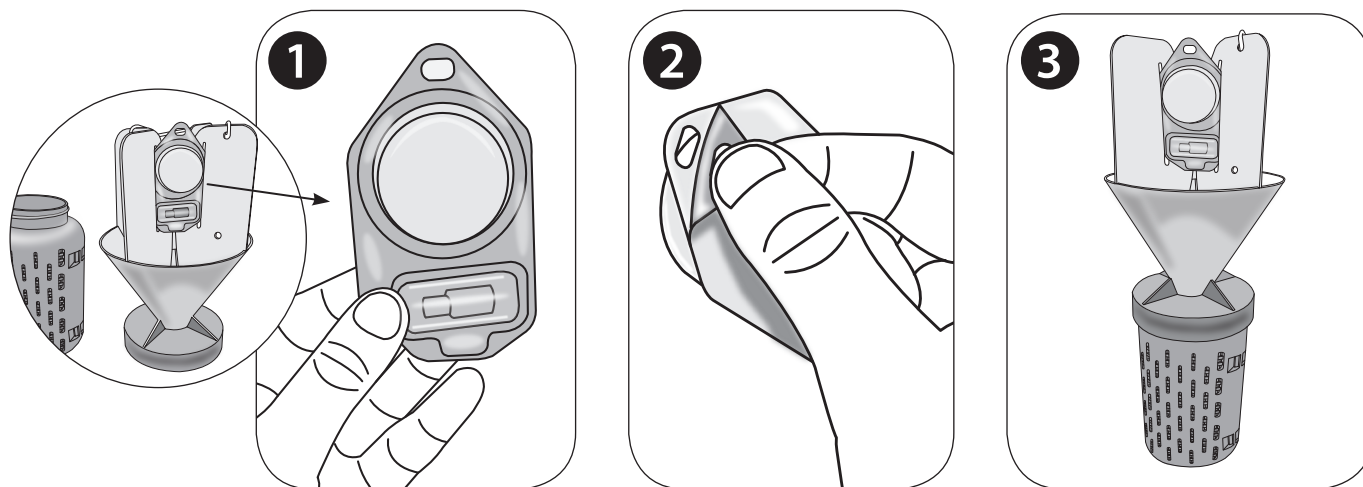


PHEROCON® JAPANESE BEETLE Trap Assembly Instructions

For: Male and Female adult Japanese Beetles, *Popillia japonica*



1. Remove lure from trap top.

2. Peel off foil covering to expose both lures in package.
DO NOT REMOVE CONTENTS

3. Position dual lure so that the open side faces inward towards the trap. Insert one edge into one slot, then tip upward to insert into opposite edge of slot.

PLACEMENT:

To be most effective, the trap should be located about 10 feet downwind of foliage to intercept beetles heading toward it. Do not place the trap near or in the foliage as it will attract more beetles into the foliage. (Experience has shown that a height of about 3 ½ to 4 ft. intercepts large numbers of beetles.) Traps work better in bright, open areas rather than shade.

MAINTENANCE:

Inspect trap periodically. One dual lure bait should be effective for a complete season in most instances. Empty the cage when it is about half full of beetles. The air holes in the container will reduce the odor of dead and dying beetles. Make sure vent holes are open. If the odor grows too strong, the odor could lessen the effectiveness of the lure. To kill beetles, immerse cage in water. Dead beetles may then be placed in garbage or buried.

HANGING TRAPS:

Hang trap on a metal or wooden stake, using wire located on trap, 3 ½ to 4 ft. above ground at least 10 ft. downwind from plants you are protecting. Be sure that the rod or stake is strong enough to prevent traps from detaching in a windy condition.

TRAP RATE:

For maximum effectiveness, use the suggested number of traps.

STORAGE AND DISPOSAL:

STORAGE: Do not contaminate water, food, or feed by storage or disposal. Store in a cool, dry place. Do not open until ready to use.

DISPOSAL:

At end of infestation season (or 3 months, whichever comes first), place in trash or offer for recycling. Do not reuse lure container.

Suggested # of Traps	Size of Use Area
1	Less than 1/8 Acre
2	1/8 to 1/4 Acre
3	1/4 to 1/2 Acre
4	1/2 Acre
Over 1/2 Acre: 1 trap every 150-200 ft. along perimeter.	
Kill the trapped beetles by immersing the cage in hot water.	

Visit our website: www.trece.com or call 1-866-785-1313

Please see Trécé's IPM Partner® Guidelines for further instructions.



INSECT PHEROMONE & KAIROMONE SYSTEMS

Your Edge – And Ours – Is Knowledge.