

# PRODUCT FEATURES



2	2
0	0
2	2
0	1





**Space to**  
**be you.**

# Contents

04

Features

---

08

Safe

---

12

Warranty

---

14

FAQs

# Features



## Benches

Benches are well-suited for the Workspace pod. Bench seating provides cushioned comfort in a color that coordinates well with the medium grey flooring and ceiling.



## Work Surface

Work surface is an integrated, 3/4" thick, solid phenolic table that is an ideal combination of durability, function and style.



## Carpet

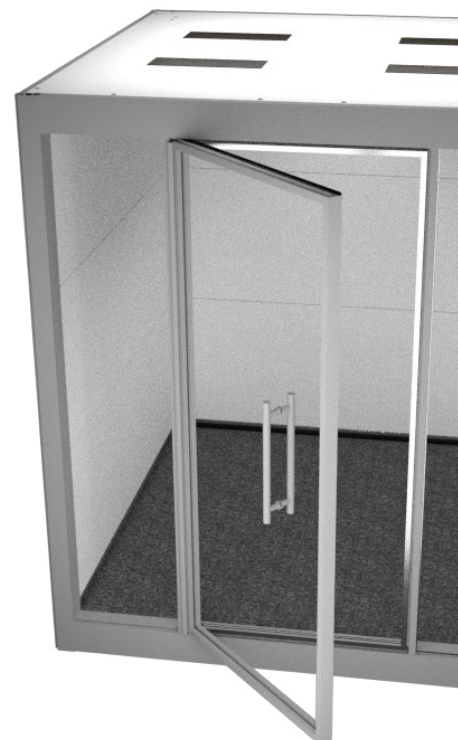
Carpet is a low pile, commercial grade, and sized to fit. If the carpet is not selected the plywood floor is unfinished.

## Door

SnapCab Workspace pods come standard with a 3/8" tempered glass door that is fully framed by a heavy gauge proprietary aluminum channel. The door is attached to the pod with a heavy-duty continuous aluminum hinge. Double seals are attached to three sides of the door frame and with a single seal on the hinge side. The seals provide a friction hold when the door is closed, which enhances the pod's acoustic qualities. Each pod comes with a strike side post with a 1/2" wide stop to prevent over-closure.

- Double seals for acoustic enhancements
- Door width 34"
- 3/8" tempered glass

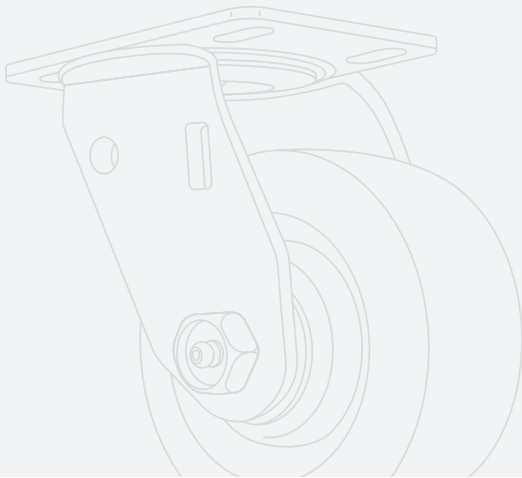
\*All pods with casters will have a 6" step up.



## Casters & Leveling Feet

### Casters

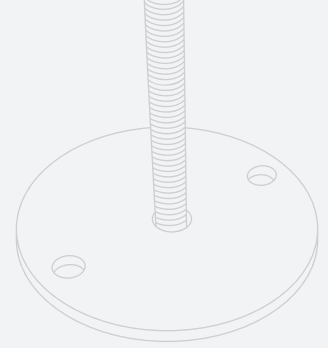
Casters and leveling feet are provided with the Focus, Meet 4, Meet 6 and Nurture to allow for easy relocation within a workplace.



### Seismic/Leveling Feet

Seismic leveling feet are included with each pod. Located at each corner they can be retracted for mobility or extended to the floor to limit movement. The feet are seismic tested and certified. If the pod needs to be connected to fire suppression, hardwired to building or located in a seismic location, the pod should be anchored through the holes that are provided.

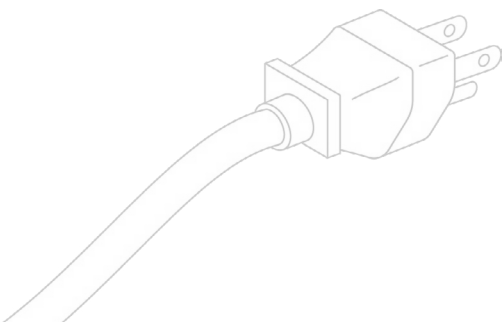
If multiple pods will be placed next to each other, please let your SnapCab rep know.



## Power Components

### Power Cord

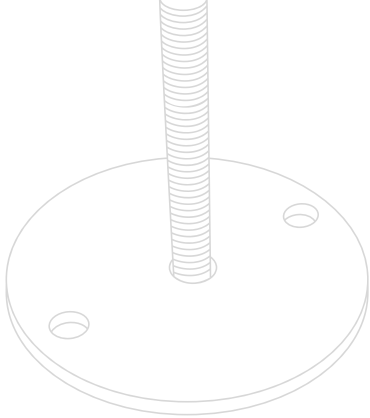
SnapCab pods have a plug and play design with a 6' long cord that plugs into a standard outlet. One 15-20 amp circuit is sufficient for the unit. Each plug has a built in circuit breaker with reset.



### Power Bar

Power bar is standard for each pod size. The bar consists of (2) 110 outlets and (4) USB outlets. If the table option has been selected, the power bar is clamped to it for ease of use. If the table option is not selected, the power bar is still included, but it does not come installed on any surface. If the work surface is not ordered the power bar is still included.





## Seismic Certified

SnapCab pods are certified in both stability and lateral capacity, based on calculations and testing in accordance with ASTM E72, and provide a structural engineer of these records with anchorage recommendations in worst case seismic zones and importance factors. This certification additionally complies with and references 2016 CNC, IBC and ASCE 7-10 codes.

Your pod can be anchored to the floor. All pods are installed with seismic feet for additional stability and safety. Activate the seismic feet by lowering them to the floor and bolting them in place.

## Q & A

### **My pod isn't located in an earthquake zone. Do I still need to install the seismic feet?**

Not at all! SnapCabs are perfectly safe and stable to use, even without seismic feet. You may need to use them if you are installing fire suppression, based on some building safety code requirements.

## Fire Suppression

### **Built to accommodate sprinkler systems**

Some buildings may require certain pods to be hooked up to sprinkler systems. We have done our best to facilitate this and make it as easy as possible for the end user.

The Meet 4 and Meet 6 models are equipped with a knock-out for a sprinkler system in the ceiling canopy, as well as an opening in the roof to accommodate for fire suppression plumbing.

If you require fire suppression for your pod, please contact your SnapCab sales rep for additional information.







# Safe

**SnapCab is committed to your safety.  
We have ensured that our products are  
safe to use in all indoor environments.**

UL Listed – UL 962. A UL listing means that our product has been tested and certified to the highest standards, by the official standard authority. All SnapCab models are UL listed and certified in both USL and CNL. The standard includes tests for:

- **Stability and mechanical strength**
- **Safety in use**
- **Fire resistance**
- **Smoke and burn indices of particleboard, fabrics, plywood, adhesives, laminates**
- **Electrical: Power distribution units and lighting**

SnapCab's UL category control number is IYNE-E502865. If you have an account with UL and would like to view our listing, please visit [iq.ulprospector.com](https://www.ulprospector.com)





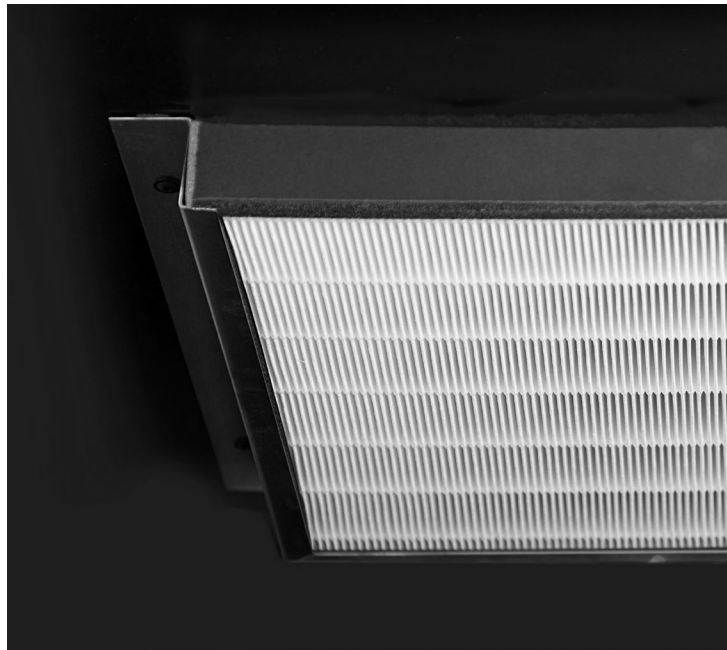
## CARB Phase 2

SnapCab is a CARB Phase 2 manufacturer. CARB Phase 1 and Phase 2 are part of California's Composite Wood Products Regulation which has to do with reducing formaldehyde emissions from composite wood products, hardwood plywood, particleboard, and medium density fiberboard.

## Air Quality

SnapCab conducts third-party testing to validate the air quality for the users of our products. We take very seriously the responsibility we have of ensuring the utmost safety and usefulness we provide to the users of our Workspace products. The air quality testing performed includes testing for formaldehyde and volatile organic compound levels through an American Industrial Hygiene Association accredited laboratory.

For more information about our safety standards, visit our website:  
**[Workspace.SnapCab.com/Safety](https://workspace.snapcab.com/safety)**



Scan QR code to  
learn more about  
SnapCab Safety



## Electrical Components

### Lighting

LED downlights are standard in each pod. The Meet 6 has (3) downlights and the other sizes have (2). The lights may be dimmed by the control knobs. LED perimeter lights are also an option. They are installed along the back ceiling to provide additional lighting.

### Occupancy Sensor

An motion sensor is included in each pod which controls the lighting and ventilation fans. When the pod is not in use the motion sensor will turn off the power to conserve energy.

Each model is equipped with an motion sensor bypass. This button turns lights up blue to indicate that it has been turned on. Activate this to prevent the lights from turning off.

### Ventilation Fans

Ventilation fans are standard in each pod. The fans exhaust the warm air out of the top and the fresh air is brought in from underneath the pod. This mimics natural airflow while forcing air to travel around sound baffles located near the bottom of the pod, further enhancing the pod's acoustic properties.

## Safety Certifications

Always check local jurisdiction regulations and follow local codes accordingly. In many jurisdictions, SnapCab Workspace pods are considered furniture and they do not require a permit.

<b>Fire Safety Solution</b>	✓
<b>UL Certification</b>	✓
<b>Seismic Certified</b>	✓
<b>Carb Phase II Compliant</b>	✓
<b>Hardwire-able</b>	Optional
<b>ADA Compliant</b>	Optional





### **Sprinkler Knockout**

A sprinkler knockout is provided in each pod in the event a sprinkler is required. The Talk and Focus typically do not require a sprinkler in many jurisdictions due to their small footprints. However, the Meet 4 and Meet 6 might require fire suppression. We recommend you check with the local jurisdiction.

### **Accessibility**

SnapCab Access is based off the Meet 6 footprint, however it is built on the floor so it is ADA compliant.

### **Hardwire Electric**

Hardwire electric is available upon request for an additional upcharge.

## **Shipping & Assembly**

SnapCab pods are shipped 75% assembled. The exterior panels, glass front and furniture are packaged within the pod, which reduces shipping materials and helps to lower our environmental footprint. Workspace pods are shipped to warehouses where they will likely have to be broken down to be moved into the building for reassembly.

- **Installation typically takes between 3-5 hours per pod, with 2 installers.**
- **Freight is included in the pod price**



### **SnapCab Pod Installation Video**

*\*Please refer to your representative for more information on the installation*



# Warranty

**At SnapCab, we stand by our quality. That's why we are pleased to provide you with a 10-year warranty structural warranty for all SnapCab Workspace products.**



Scan QR code to  
learn more about  
SnapCab Warranty

# 10

## 10 years

**Parts considered structural will be included within the ten-year warranty. Structural parts are defined as:**

- Aluminum frame
- Ceiling frame
- Flooring
- Front door
- Glass

# 5

## 5 years

**Select panel parts are included within the five-year warranty. Panel parts include:**

- Corning Gorilla Glass surfaces
- HPL interior and exterior decorative panels

# 1

## 1 year

**Parts considered consumable will have a one-year warranty and a five-year support program. Consumable parts are defined as:**

- PET surfaces
- Ceiling tiles
- TFL interior and exterior decorative panels
- Seals
- Screws
- Hinges
- Wheels
- Cables
- Bulbs
- Fans
- Electrical components
- Furniture (SnapCab table and/or SnapCab bench)
- Carpet

**Damage caused by misuse of products will not be covered under these warranties.**

The term “misuse” may include (but is not limited to) altering components in any way i.e. drilling holes, installing mounting brackets and hangers, etc., and improper cleaning procedures i.e. using excessively strong cleaners that may damage material finishes.



# FAQs

---

## 01 **What is the regulation around fire suppression and sprinkler inserts?**

Each SnapCab workspace is equipped with a knockout location in its ceiling to accept standard fire suppression/sprinkler plumbing. The requirement for this feature is dependent on regional fire code.

## 02 **Do we need permits to install SnapCab pods in our building?**

A. SnapCab pods are considered office furniture. Permits are not required to install and use pods within the office.

## 03 **What is the standard procedure around shipping and install?**

A. SnapCab pods are typically sold through our extensive dealer network. Shipping and installation are often handled by the dealer as they have established logistics networks. If a customer prefers to use SnapCab as a shipper and an installer this can be arranged for an added cost.

## 04 **Is freight included in the price?**

Freight is included in the overall price of the pods.

## 05 **What is the standard lead time for SnapCab pods?**

The typical lead time for SnapCab pods is 6-8 weeks. This lead time is dependent on a variety of factors. Primarily the complexity of the pod order.

## 06 **What sets SnapCab apart from other Office pods?**

SnapCab pods are the most robust and modular pods on the market. Their robust frame allows for the interchangeability panels throughout the pods life span. Another key factor that separates SnapCab from the competition is the industry leading 10-year warranty.

## 07 **How easy are SnapCab pods to move around the office?**

Provided fire suppression is not required in your jurisdiction and seismic regulations do not mandate the pods to be immobilized, SnapCab Focus, Meet 4 and Meet 6 all come standard with heavy duty casters allowing ease of mobility by one to two people.

## 08 **What makes SnapCab modular/flexible?**

SnapCab pods are designed using a patented modular paneling system which allows the user to change/update the panel finish and look of the pod easily and quickly throughout its product lifespan. Another key feature are the castors within our standard product line. These heavy-duty castors allow SnapCab pods of all sizes to be easily moved throughout the workplace.

## 09 **Are SnapCab pods claustrophobic?**

The combination of the air circulation system, the full glass front wall and ample adjustable lighting combine to create a comfortable work environment.

## 10 **What are my furniture options?**

SnapCab pods typically come with a table, bench seating and carpet as standard furniture options. If customers wish to use their own furniture our pods can also be sold without furniture at a lower price.

## 11 **Can I have data ports in my SnapCab pods?**

SnapCab Pods typically come with 4 USB ports and 2 110A outlets. Data ports can be substituted upon request.



#### **SnapCab 2021**

The Manufacturer reserves the right to modify the specifications of the product at any time without prior notice. | V.1

#### **OFFICES**

##### **US Manufacturing & Showroom**

175 Titus Avenue, Warrington, PA 18976

##### **Canada Manufacturing**

70 Railway Street, Kingston, ON K7K 2L8

#### **CONTACT**

**888.766.7834**

**[SnapCab.com/Workspace](https://www.snapcab.com/workspace)**

**[Sales@SnapCab.com](mailto:Sales@SnapCab.com)**

