



WWW.REVIVALCYCLES.COM

# UNIVERSAL STARTER SOLENOID + MAIN FUSE

You have in your hands the most complete starter solenoid kit available in the world, assembled with OEM quality components by the team at Revival Cycles.

Suitable for any motorcycle that has a starter solenoid independent of the starter motor, and ideal for mo.Unit installations.

\*Not compatible with most BMWs, Moto Guzzi or Harley V-twins.

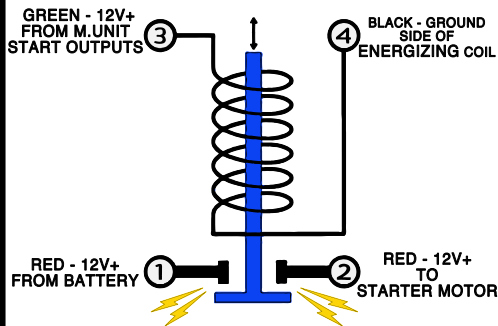
Two separate functions, solenoid and fuse, are consolidated into a single unit providing a cleaner, more organized wire harness.

### KIT CONTENTS

- 1X STARTER RELAY
- 1X SOLENOID CAP
- 2X MOUNTING TABS
- 2X 10 AMP FUSE
- 1X CONNECTOR
- 2X 15 AMP FUSE
- 6X TERMINALS
- 2X 20 AMP FUSE
- 5X TERMINAL SEALS
- 2X 30 AMP FUSE
- 2X FUSE COVERS

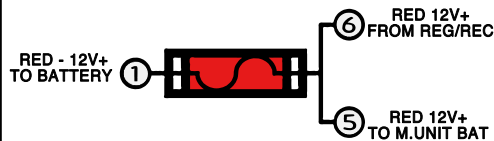
Revival Cycles is not responsible for damage that comes as a result of improper use or failure to follow instructions. If you have any concern about your ability to install this device please consult a certified motorcycle mechanic for assistance.

### STARTER SOLENOID CIRCUIT



When 12V+ is applied to terminal 3 the trigger coil a magnetic field is generated, lifting the trigger to close the circuit between terminal 1 and terminal 2 and activating the starter motor.

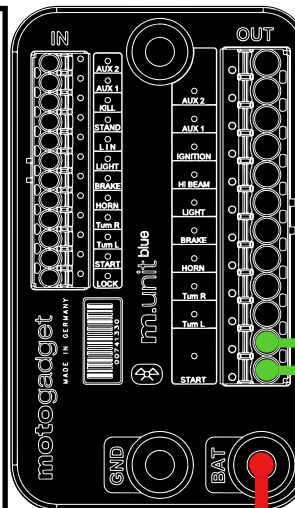
### MAIN FUSE CIRCUIT



The main fuse size should match the main fuse from the OEM electrical system. It's purpose is to shield the battery from overvoltage should the regulator fail. The m.Unit has it's own circuit protection and the charging system can not produce enough current to damage it.

### TERMINAL ASSIGNMENTS

- ① RED 12V+ FROM BATTERY - 6 AWG
- ② RED 12V+ TO STARTER MOTOR - 6 AWG
- ③ GREEN 12V+ FROM M-UNIT START OUTPUT - 18 AWG  
\* OR STARTER RELAY/START BUTTON FOR NON M.UNIT INSTALLATIONS
- ④ BLACK TO GROUND - 18 AWG
- ⑤ RED 12V+ TO M-UNIT BAT - 12 AWG  
\* OR + TERMINAL AT KEY SWITCH FOR NON M.UNIT INSTALLATIONS
- ⑥ RED 12V+ FROM REG / REC



WIRE GAUGE MAX AMPERAGE QUICK REFERENCE	
AWG	AMP
22	5
20	10
18	15
16	20
14	30
12	40
6	100

