



型号 / Model :

CBD20-150

电动托盘搬运车 / Electric Pallet Truck

AC

EPS

弯道自动减速

经典车型 畅销欧美

优点 :

- › 货叉进出双面托盘设计 ;
- › 电子助力转向, 轻便, 静音 ;
- › 交流驱动电机, 无碳刷、免维护 ;
- › 电起升, 快速、高效, 标配起升限位装置 ;
- › 低能耗, 更环保;
- › 交流控制器, 无级调速, 动力强劲, 多重自动保护;

Advantages:

- › Fork fit for double-deck pallet.
- › Electronic Power Steering, light and low noise.
- › AC driving motor without carbon brush and free maintenance.
- › Electric lifting, rapid, efficient, electricity limit switch is STD.
- › Save energy, more environmentally friendly.
- › AC controller, stepless, strong power, multiple automatic protection.

| 特性 Feature | | |
|---|------|---------------------------------------|
| 型号 Model | — | CBD20 |
| 配置号 Configuration No. | — | 150 |
| 额定载重 Load capacity | kg | 2000 |
| 载荷中心距 Load center | mm | 600 |
| 轴距 Wheel base | mm | 1390 |
| 操作类型 Operating type | — | 步行式 Walkie |
| 车轮 Wheels | | |
| 轮子类型 (前/后) Wheels type | — | PU |
| 驱动轮/平衡轮/承重轮数量 Wheel quantity Driving wheel/Balance wheel/Bearing wheel | — | 1/1/4 |
| 驱动轮尺寸 Driving wheel size | mm | Φ248×75 |
| 平衡轮尺寸 Balance wheel size | mm | Φ115×55 |
| 承重轮尺寸 Bearing wheel size | mm | Φ84×80 |
| 尺寸 Dimension | | |
| 货叉最低离地高度 Min. fork lowered height | mm | 85 |
| 货叉最大起升高度 Max. fork lifting height | mm | 195 |
| 最大起升行程 Max. lifting height | mm | 110 |
| 货叉外侧间距 Outside width between forks | mm | 540/600/650/685 |
| 货叉内侧间距 Inside width between forks | mm | 200/260/310/345 |
| 货叉长度 Fork length | mm | 1150/1200 |
| 货叉宽度 Fork width | mm | 170 |
| 货叉厚度 Fork thickness | mm | 75 |
| 整车全长 Overall length | mm | 1750 |
| 车体宽度 Overall width | mm | 720 |
| 整车高度 (含手柄) Overall height (With handle) | mm | 1385 |
| 整车高度 (不含手柄) Overall height (Without handle) | mm | 850 |
| 最小转弯半径 Min. Turning radius | mm | 1575 |
| 最小直角堆垛通道宽度 (托盘800×1200, 1200沿货叉放置) Min. Aisle width for pallets 800×1200 | mm | 1900 |
| 最小直角堆垛通道宽度 (托盘1000×1200, 1200沿货叉放置) Min. Aisle width for pallets 1000×1200 | mm | 1940 |
| 性能 Performance | | |
| 最大行驶速度, 满载/空载 Travel speed, laden/unladen | km/h | 3.5/4 |
| 最大起升速度, 满载/空载 Lift speed, laden/unladen | mm/s | 30/35 |
| 最大下降速度, 满载/空载 Lowering speed, laden/unladen | mm/s | 40/35 |
| 爬坡度, 满载/空载 Gradeability, laden/unladen | % | 6/16 |
| 电气配置 Electrical configuration | | |
| 驱动电机/起升电机/转向电机 Drive motor/Lift motor/Steering motor | kW | AC1.5/DC1.2/DC0.15 |
| 蓄电池电压/容量 Battery voltage/capacity | V/Ah | 24/210 |
| 制动 Brake | — | 电磁/再生 Electromagnetic/Regenerative |
| 控制器型号 Controller | — | ZAPI |
| 重量 Weight | | |
| 蓄电池重量 Battery weight | kg | 192 |
| 自重 (包含蓄电池) Service weight with battery | kg | 605 |

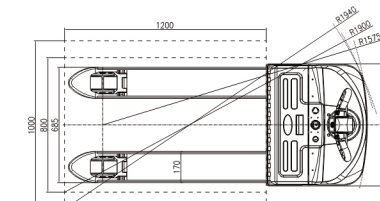
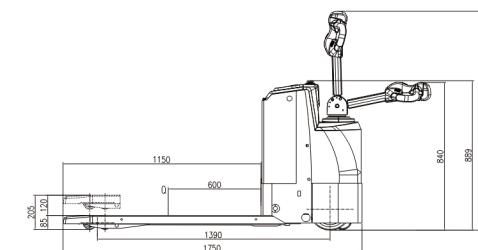
*本公司保留更改产品设计和规格的权利, 恕不另行通知。

选配:

- ⊙ 170Ah免维护蓄电池+内置充电器;
- ⊙ 手柄直立行走功能。

OPTIONS:

- ⊙ 170Ah VRLA Battery+Built-in charger;
- ⊙ Handle upright walking function.



HELI 安徽合力股份有限公司
ANHUI HELI CO., LTD.

地址: 中国合肥经开区方兴大道668号
电话: (86 551)63632133, 63648005, 63689000
传真: (86 551)63633431
服务: 4001-600761
网址: http://www.helichina.com

ADD: NO. 668 Fangxing Street, Economical & Development Zone, Hefei, P.R. China
TEL: (86 551)63632133, 63648005, 63689000
FAX: (86 551)63633431
400 SERVICE: 4001-600761
WEBSITE: http://www.helichina.com

授权经销商