

# GUPPYFRIEND

## Washing Bag

### The problem

With each wash, countless plastic fibers from synthetic textiles are making their way from washing machines into rivers and oceans. Once in the environment, the microfibers concentrate pervasive bacteria and pollutants. They are consumed by aquatic organisms, which can result in gastrointestinal infections and blockages, reproductive problems, and starvation - problems that ultimately work their way up the food chain.

According to a study from the University of California at Santa Barbara, a city the size of Berlin releases a wash-related volume of microfibers equivalent to approx. 500,000 plastic bags - every single day.

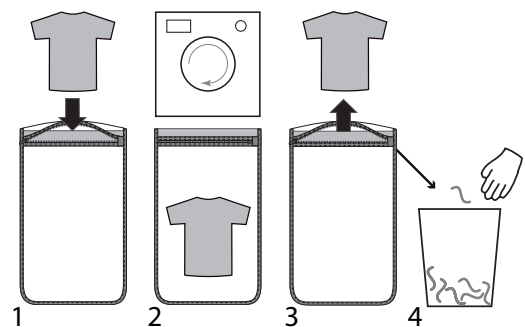
### Our solution:

#### The Guppyfriend Washing Bag

The Guppyfriend Washing Bag is a pragmatic solution to prevent microfibers from entering into rivers and oceans. Its soft surface results in less fiber loss and thus extends garments lifetime. Those microfibers that break during washing are captured inside the bag. The bag itself does not lose any fibers.

### So einfach geht's

1. Put synthetic textiles into the Guppyfriend. Do not overfill and separate colors
2. Close the Guppyfriend and wash as usual
3. Take out wet textiles after washing
4. Remove the released microfibers from the upper corners inside of the Guppyfriend and dispose properly



### Please note

- Do not put the bag into the tumble dryer
- do not rinse under running water
- do not overfill - the clothes need space to move inside the bag
- wash only clothes of similar colors together in the bag
- anything sharp may harm the material of the bag
- put other textiles together with the Guppyfriend into the washing machine to avoid an unbalance
- do not iron (the crumpled surface is not a problem)
- use only liquid detergents
- do not dry in the sun
- remove coarse dirt and animal hair before washing
- hand wash without the bag, but use bag to filter wastewater
- for disposal tips visit [www.guppyfriend.com](http://www.guppyfriend.com)

The Guppyfriend Washing Bag captures extremely small fibers that break off during washing. The bag does not capture dissolved substances, nano particles or dust grains e.g. from production.

### How can I reduce microfiber waste from washing?

Purchase clothes made of natural materials • prefer front-loader over top-loader washing machines • do not wash warmer than 30°C/ 86°F to reduce hydrolysis of polyester fibers • use liquid detergents only • do not use more detergent than needed • wash less often • use the Guppyfriend Washing Bag • follow the TEN FOR THE OCEAN washing guide: [www.stopmicrowaste.com/tenfortheocean](http://www.stopmicrowaste.com/tenfortheocean)

## **Recycling**

The Guppyfriend Washing Bag is entirely made of polyamide and can be recycled in groups of identical materials (PA 6.6). First remove zip completely.

For return address: [www.guppyfriend.com](http://www.guppyfriend.com)

## **Long-term solutions**

The Guppyfriend Washing Bag cannot be the only solution. Our consumption behavior needs to change radically; new materials and clean washing machines need to be developed.

This might take a while. Until then your Guppyfriend Washing Bag is a practical and effective way to reduce the plastic pollution of our rivers and oceans.

## **STOP! MICRO WASTE**

STOP! Micro Waste is dedicated to raise awareness about the (micro)plastic problem. We aim to explore and initiate ideas on how to avoid, replace and re-use plastics in every day life and beyond.

STOP! MICRO WASTE is a non-profit organization from Berlin, Germany, initiated by LANGBRETT, a group of surfers and nature lovers.

[www.stopmicrowaste.com](http://www.stopmicrowaste.com)

Instagram: [@stopmicrowaste](https://www.instagram.com/stopmicrowaste)

Thank you for your support!

**STOP!**  
**MICRO**  
**WASTE**  
for a plastic free nature