

# INSTALLAZIONE SETUP

## Part 1 Download

- [KT200 Software V22.11.01](#)
- [KT200 Software Installation Guide 1\(V22.08.20\)](#)
- [KT200 Software Installation Guide 2\(V22.10.01\)](#)
- [KT200 Software Installation Guide 3\(V22.11.01\)](#)
- [KT200 Support ECU List](#)
- [KT200 Support TCU List](#)
- [ECUHelp Software](#)
- [Related Blog](#)

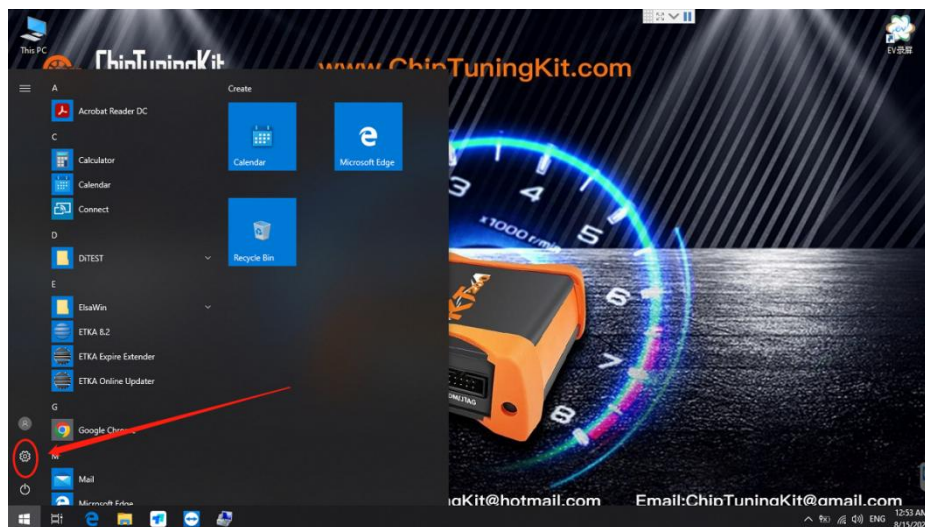
## Part2 Installation Setup

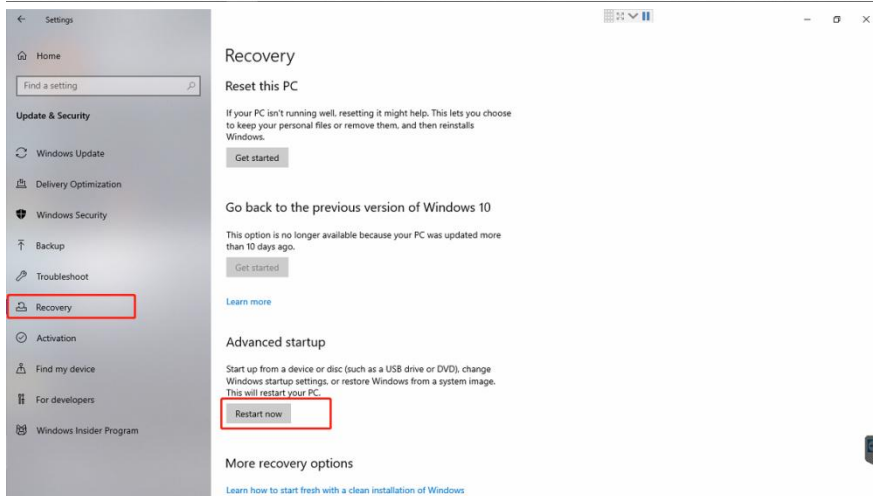
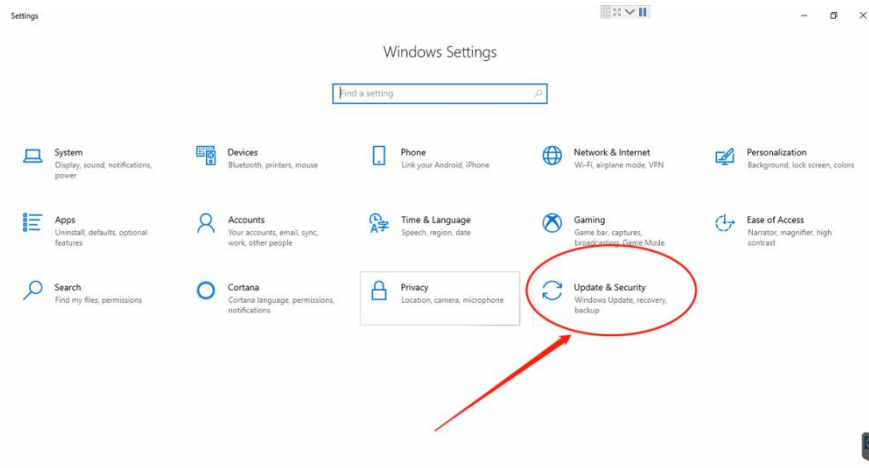
### 1 Disable driver signature enforcement

- Software support win7 win10 win11 system
- If the installed computer is win10 11 system, you need to turn off the mandatory signature, otherwise you will encounter the driver installation problem.
- If the system is Win7, you can skip the operation of turning off the forced signature of the driver and go directly to step 2 to install the software

### Here is an example of win10

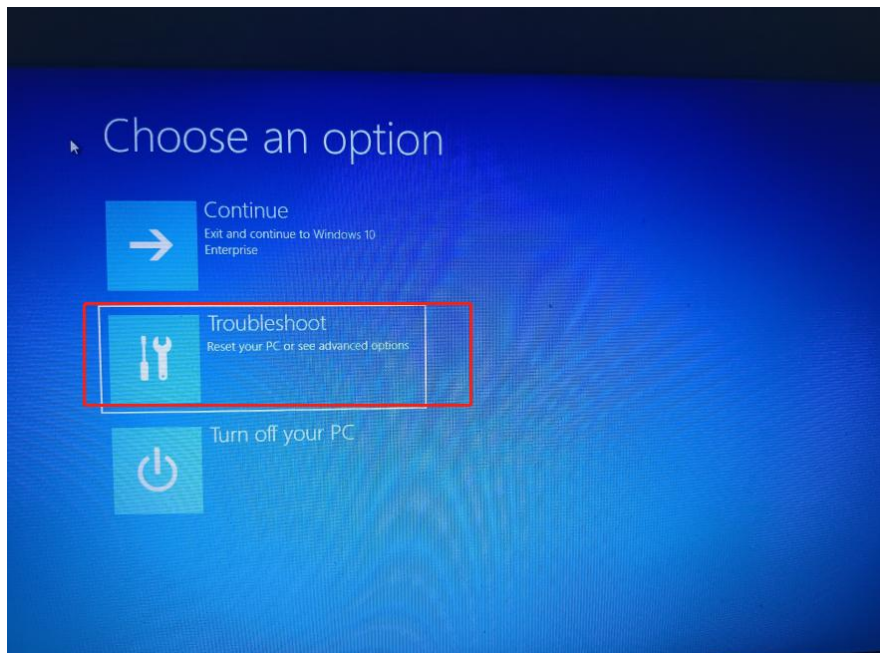
- Win10 closes the driver mandatory signature steps:” windows menu” -” settings” - “Update security” -”Recovery” -” Advanced start-up” - “restart now”.



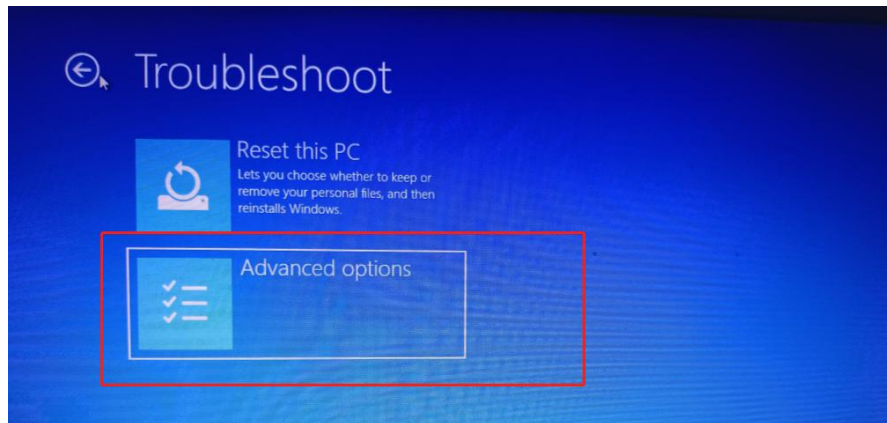


•Select Reboot and the computer will automatically reboot into the following screen

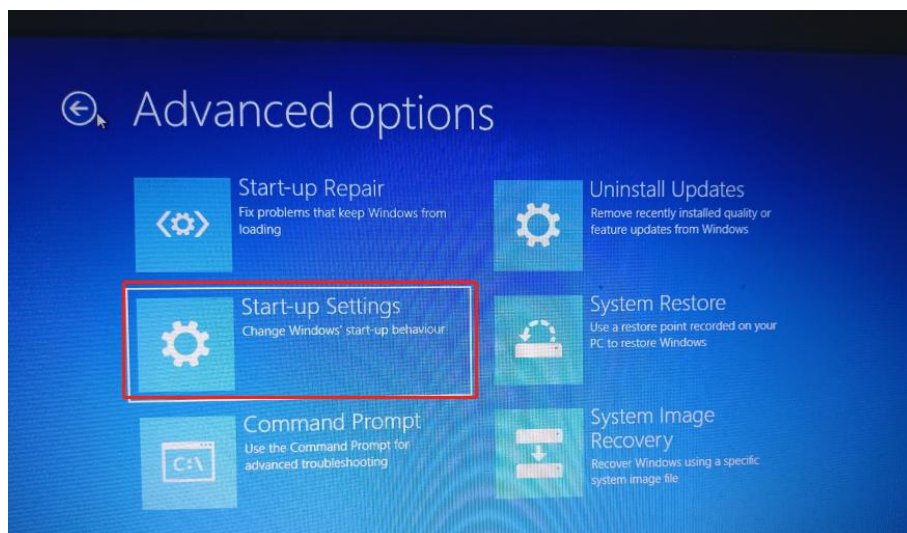
•Select “Troubleshoot”.



•Select “Advanced options”.



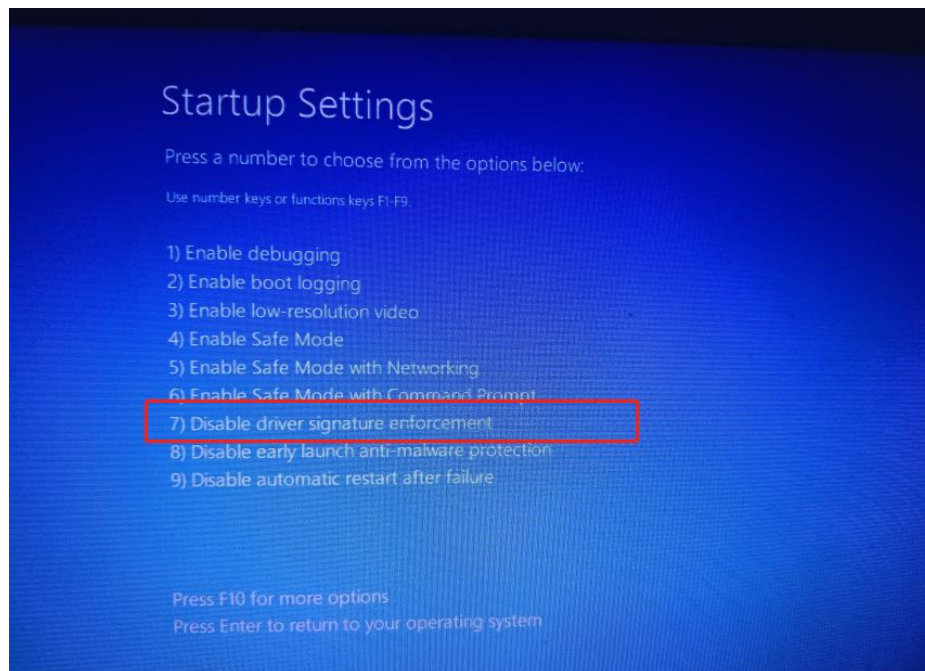
•Select “Start-up settings”



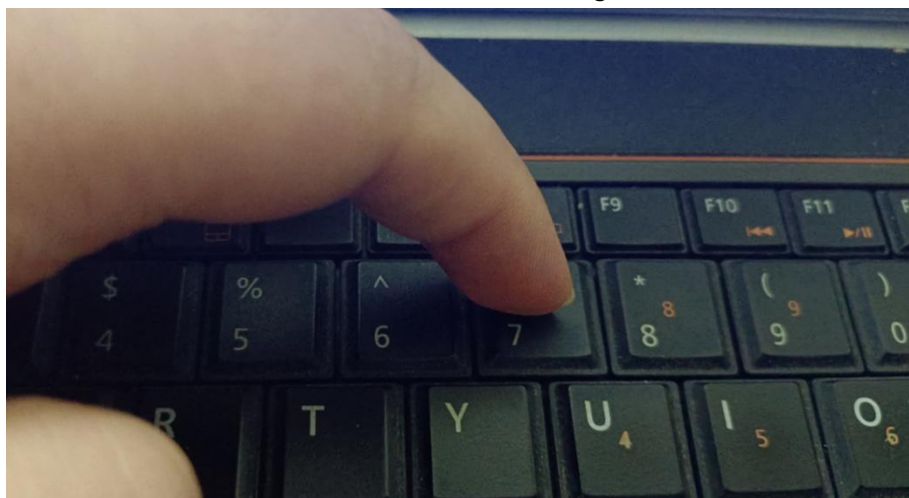
•Select “restart”



- Select “Press the numeric keyboard 7 to select Disable driver signature enforcement”



- Then the computer will automatically reboot into the system and then select software installation after entering





## 2 Install the software

• From our website [www.ChipTuningKit.com](http://www.ChipTuningKit.com) it's always available the latest updated version of the KT200. Download Setup.exe and save it on your PC.

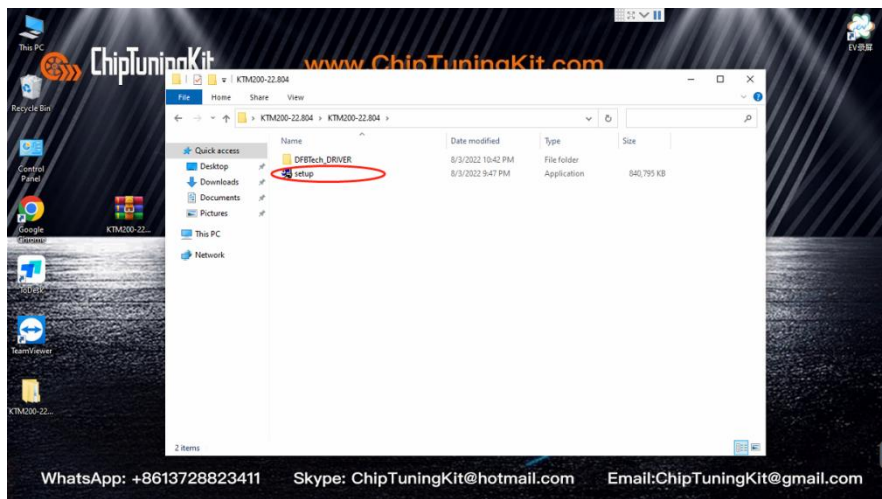
• Unzip the KT200 software



• Open the unzipped folder

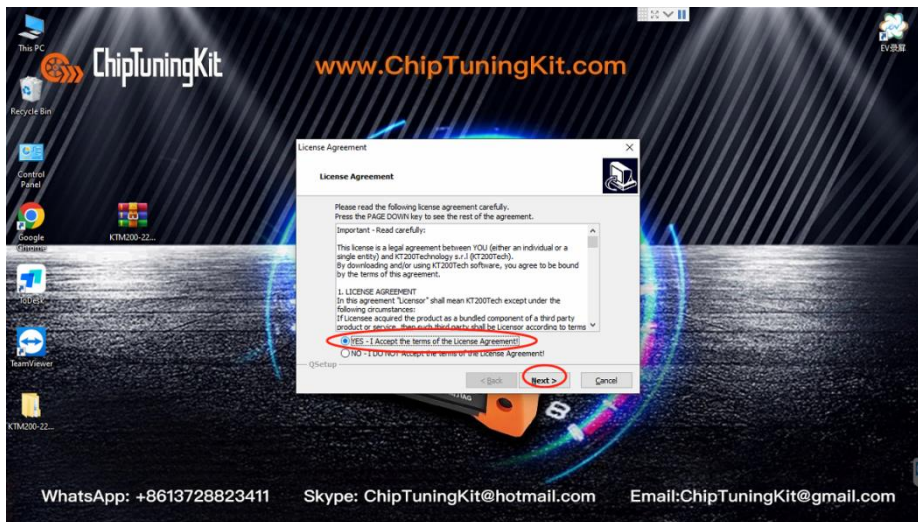


• Double click on the file and Setup.exe





•Read the conditions of contract and accept the terms of license and click Next:



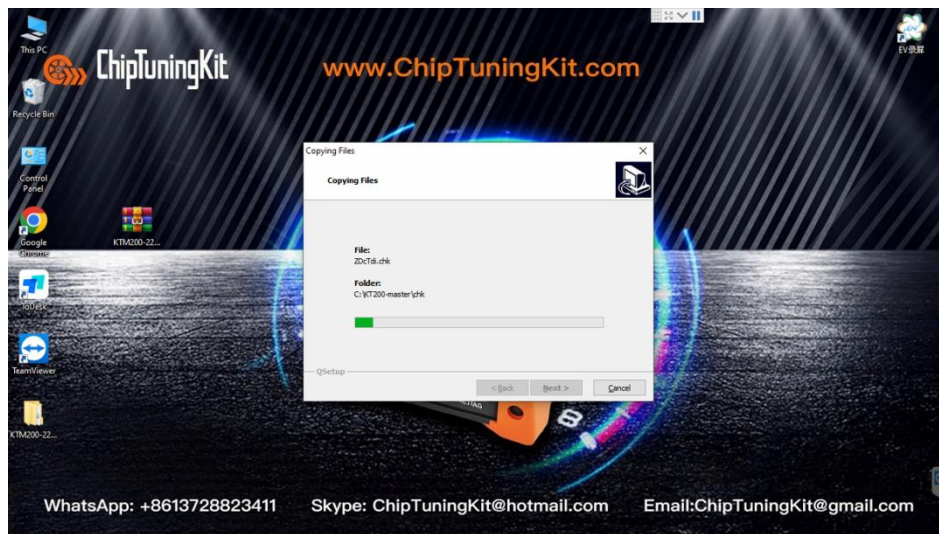
•Maintain the folder of installation

•C:\ KT200-master





- Wait for the installation to complete:



- Now the software is installed in your PC, click Finish:



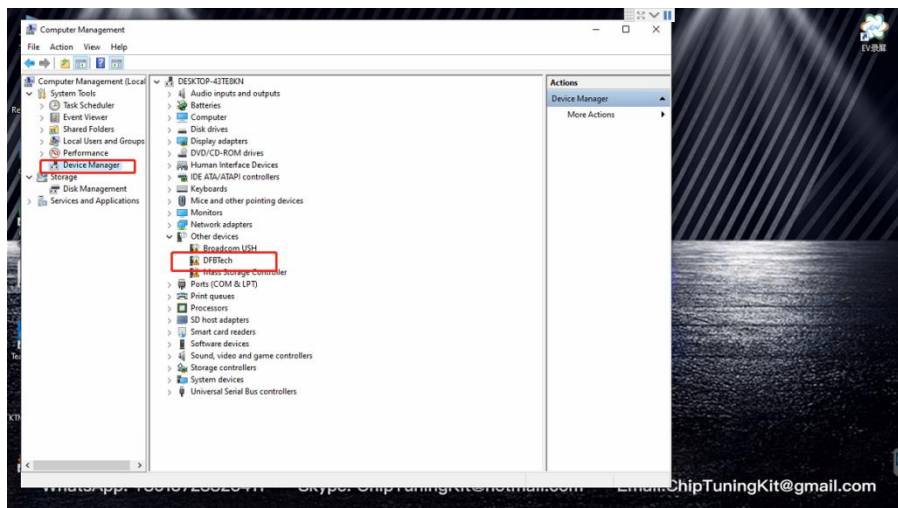
- You can now connect the instrument to the computer via USB cable

### 3 Install Driver

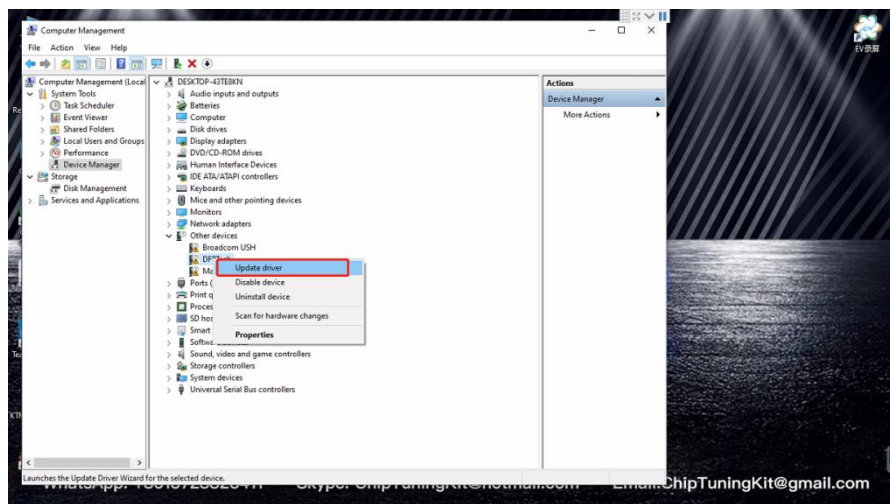
- Power up the device and connect it to the computer Install the USB driver for the device
  - right click my computer and open manage



- Select Device Management to find DFB tech device exceptions

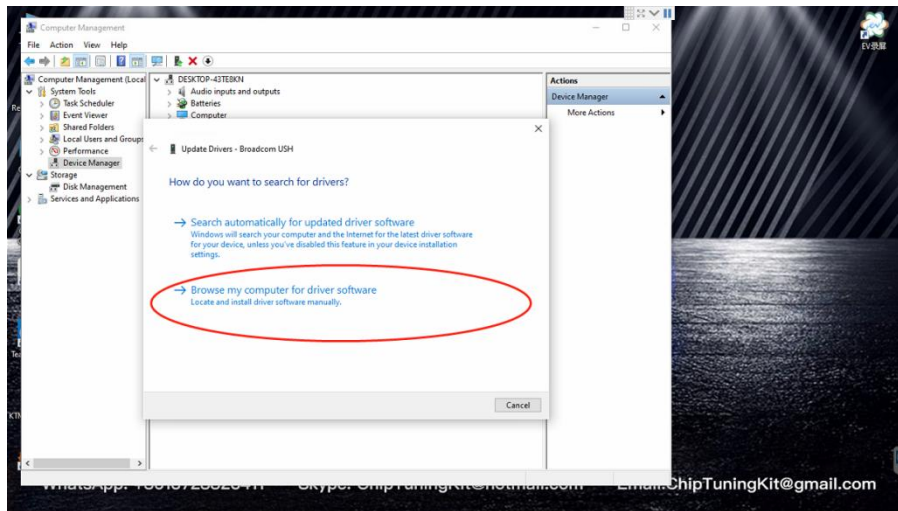


- Right click on DFB tech device and select update driver

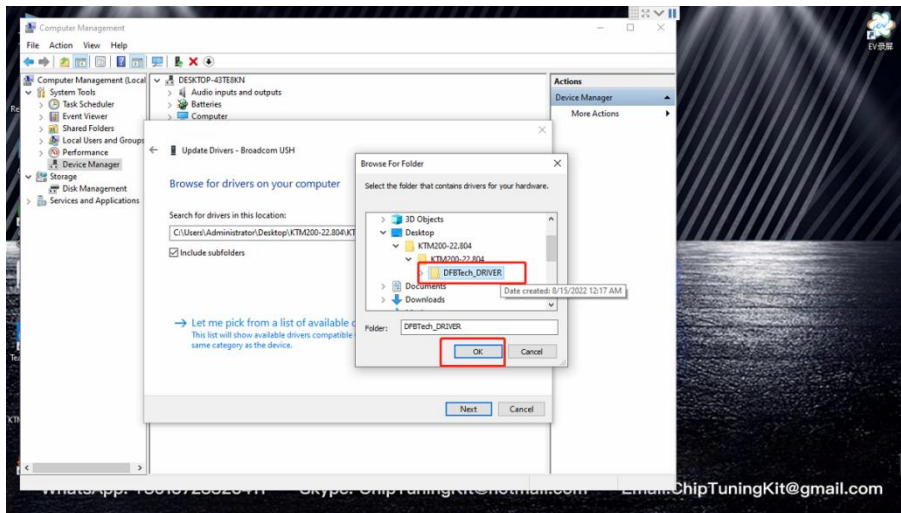




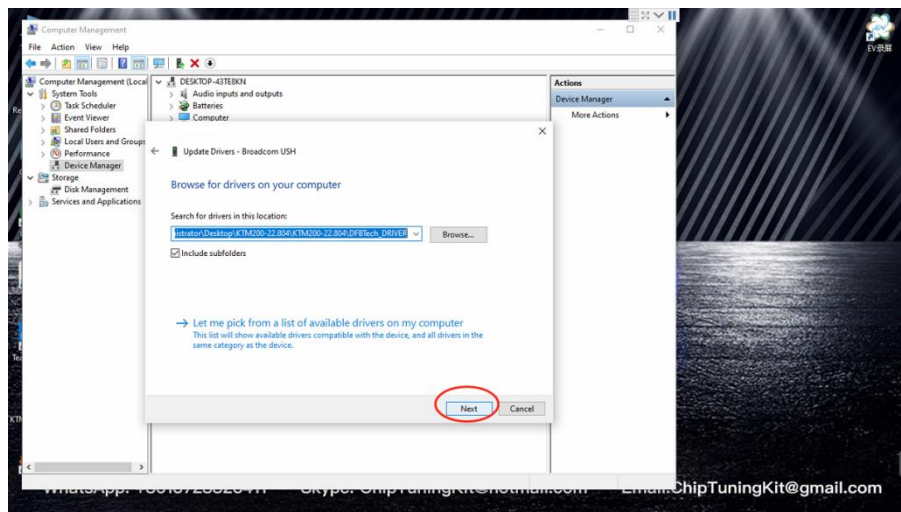
- Browse my computer for driver software



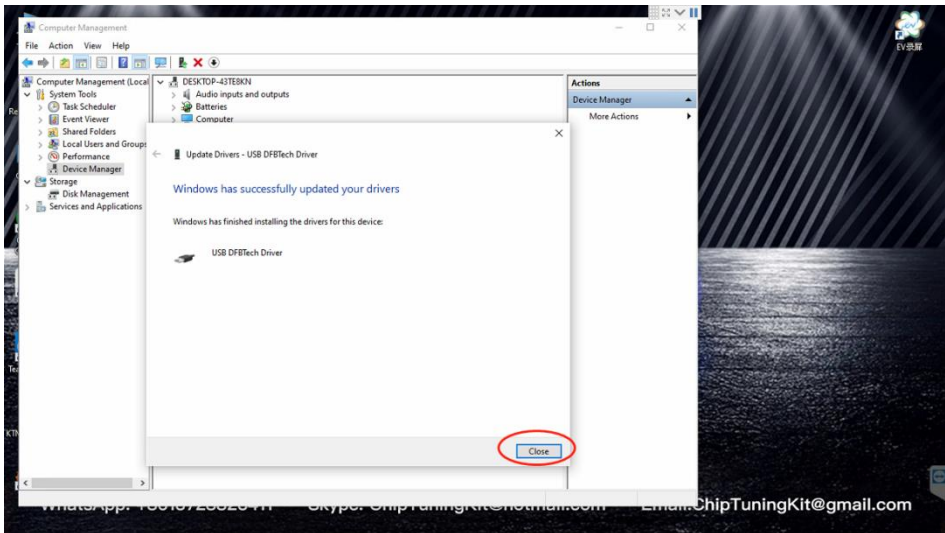
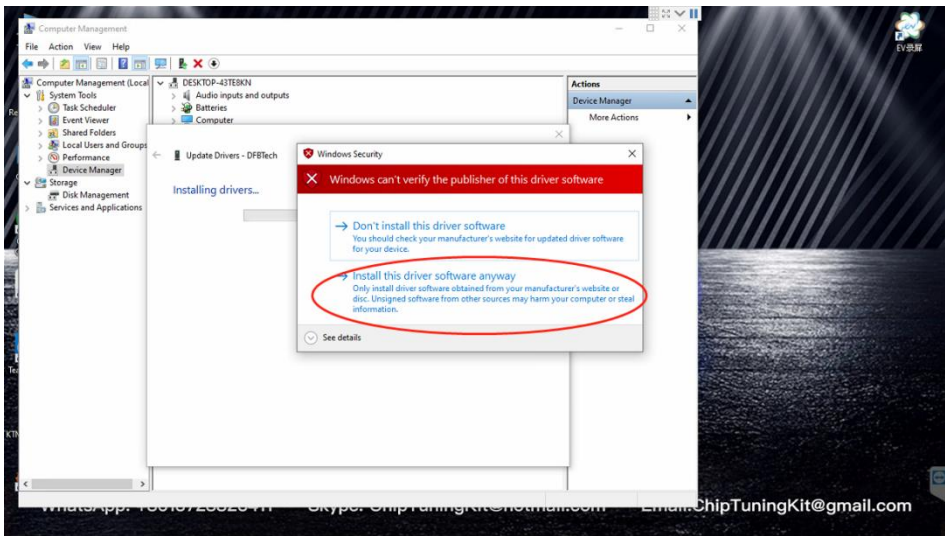
- Select DFBTech DRIVER in the KTM200-22.804 file



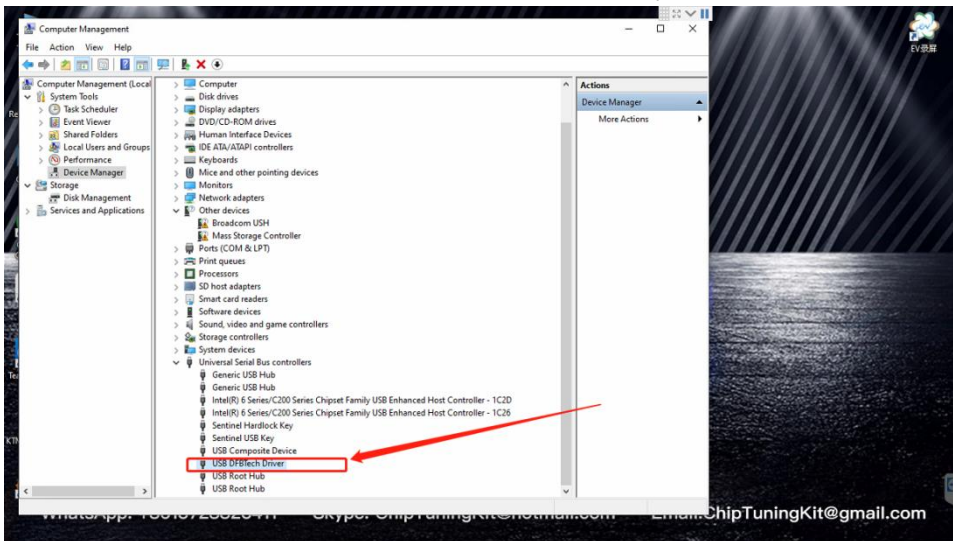
- Select next



• Install this driver software anyway



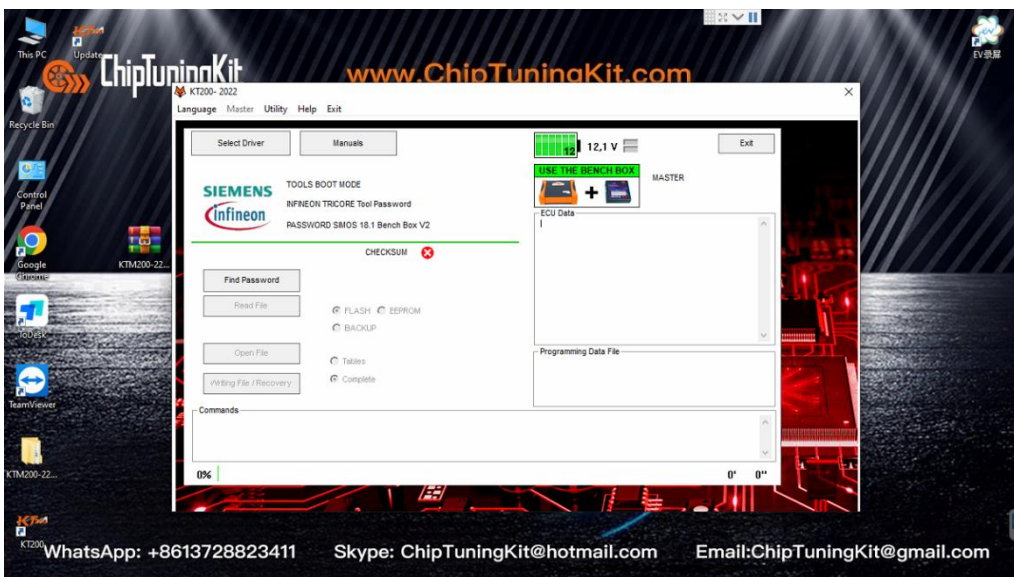
• The driver is installed normally



## 4 Open the Software

- Double click to run KT200 Software

Note: KT200 software can only be opened when the device is started and connected to the laptop.





## 5 Update

- Run desktop Update icon



- Device INFO option can read device serial number



- Resetting the device can reset the device to refresh

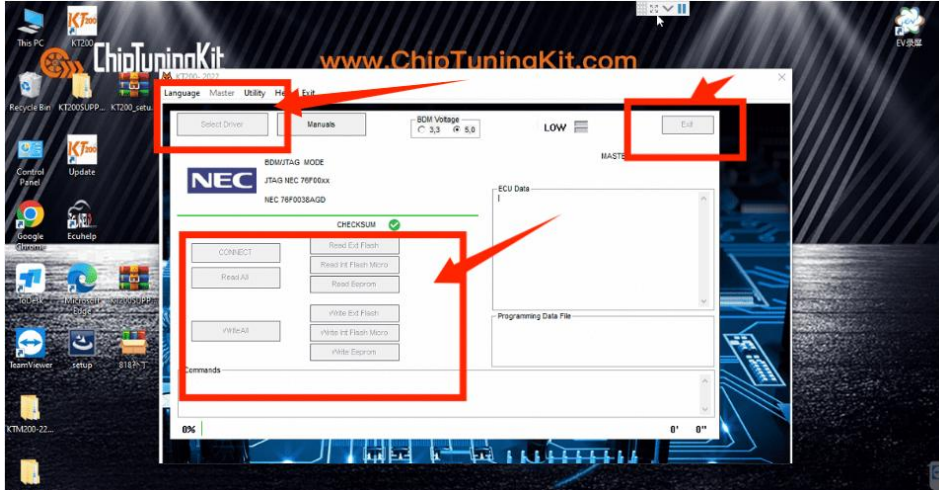




# Part3 KT200 Possible Problems and Solutions

## 1 KT200 Software V22.10.01 Unable to Select Driver & Solution

Problem: Select Driver is grayed out and cannot be selected

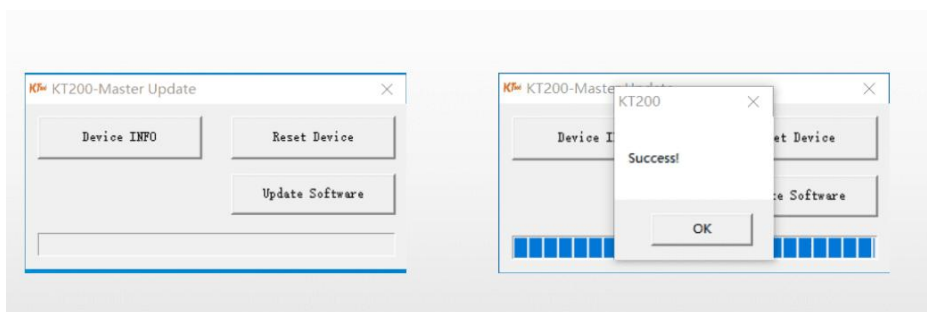


## Solution!!!

Step 1: Go to Device Manager and deleted driver. Reinstall from installation.



Step 2: Open KT200 Update Program and "Reset device" (This step is crucial)

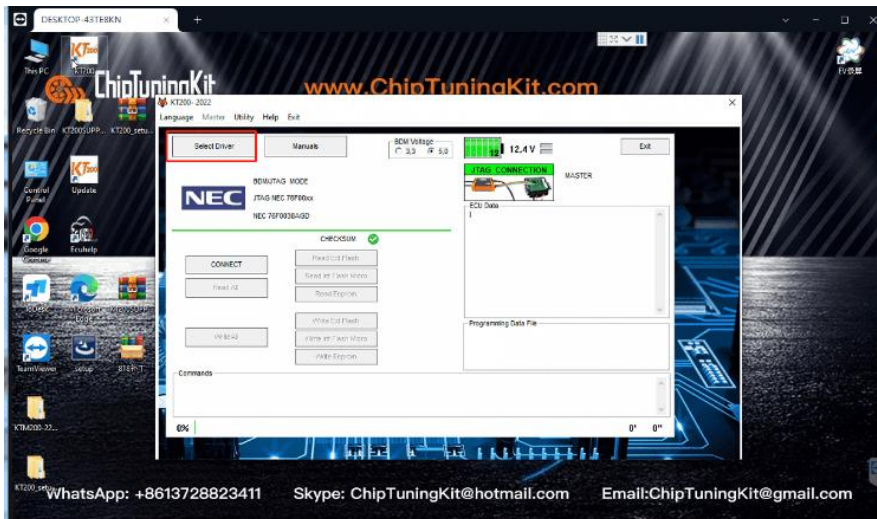




Step 3: Unplug the device USB port and reconnect it.

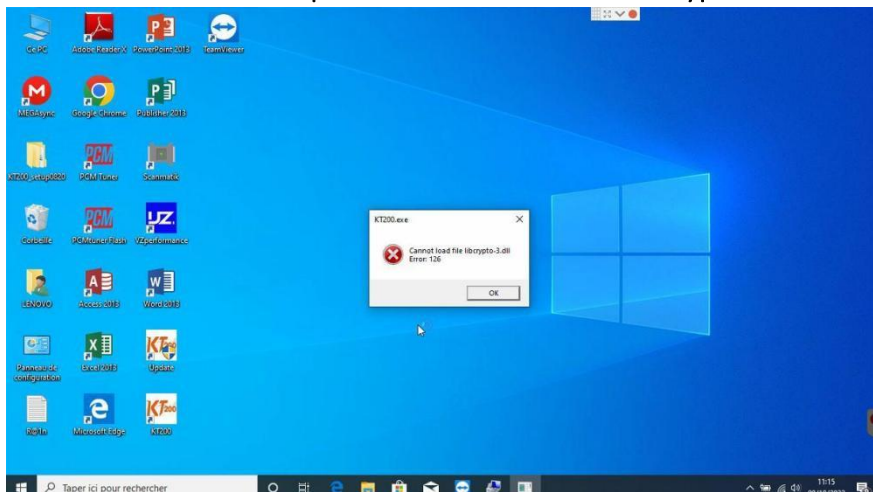


Step 4: Open the software normally.



## 2 KT200 Startup Error and Solution

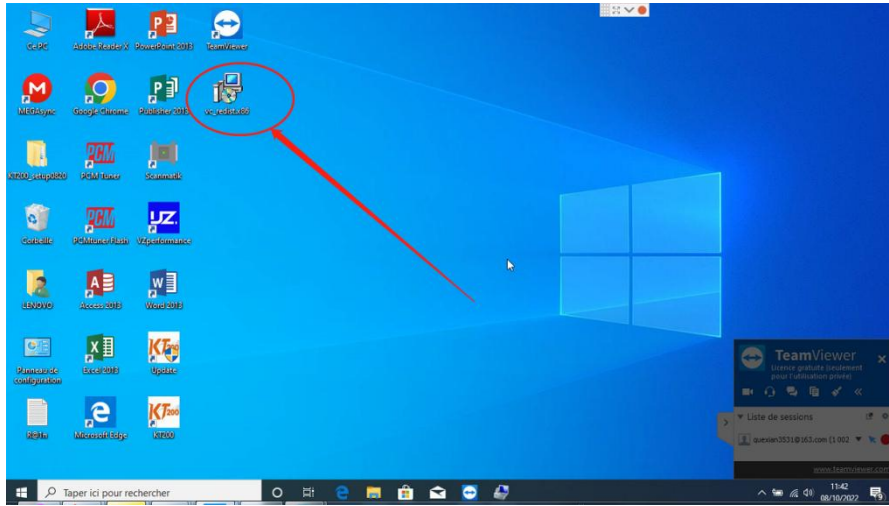
Problem: Startup Error: "Cannot load file libcrypto-3.dll"



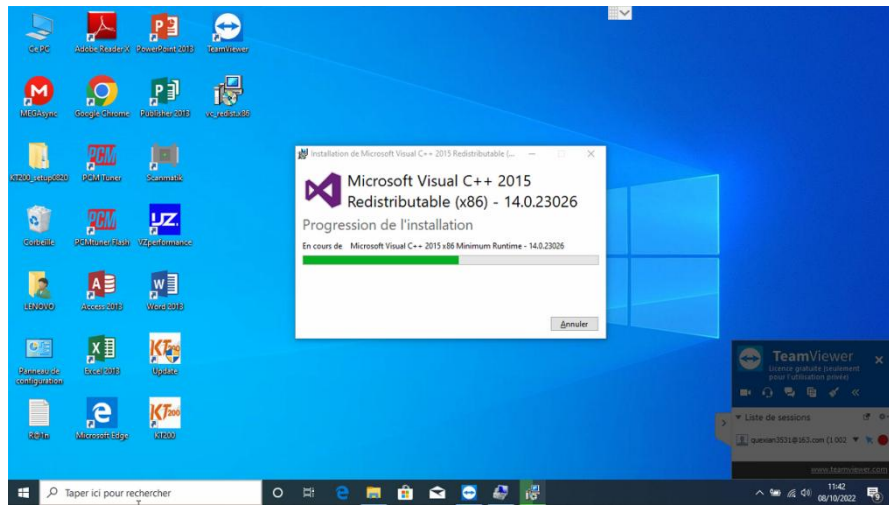
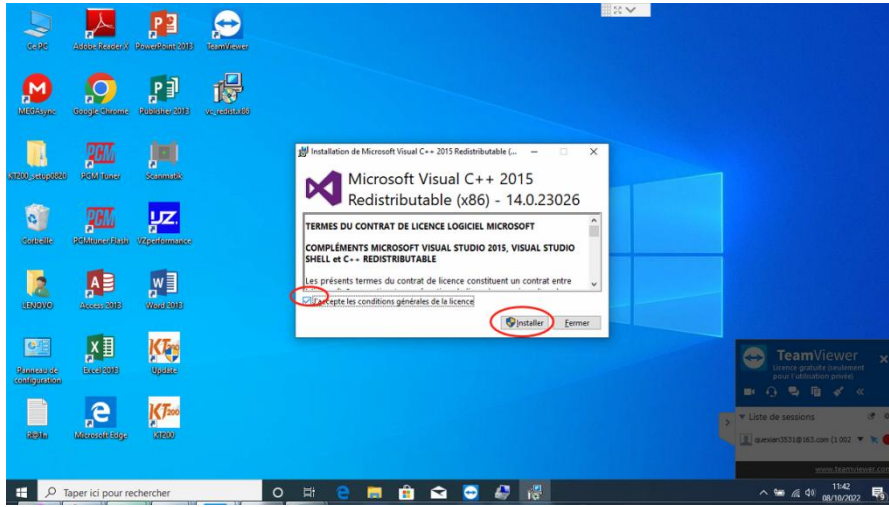
Reason: Laptop is caused by missing vc\_redist plugin.

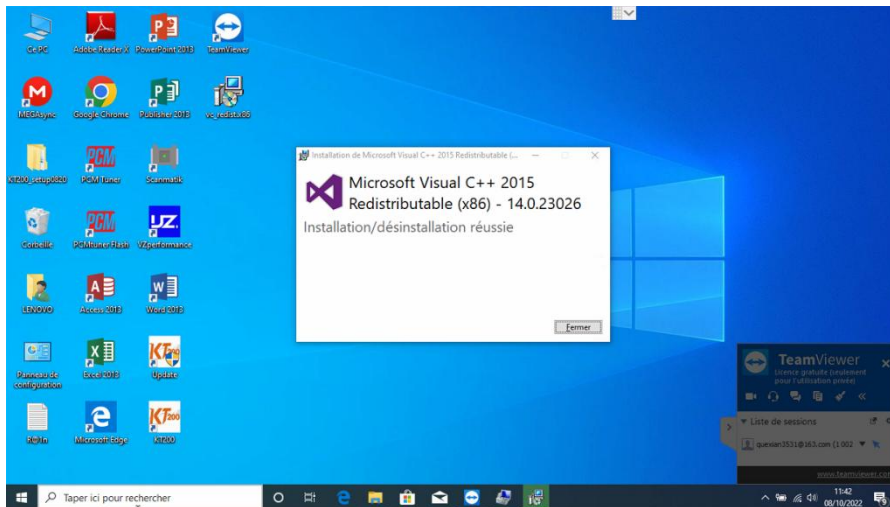
### Solution!!!

Step 1: Download vc\_redist to the desktop and double click to run

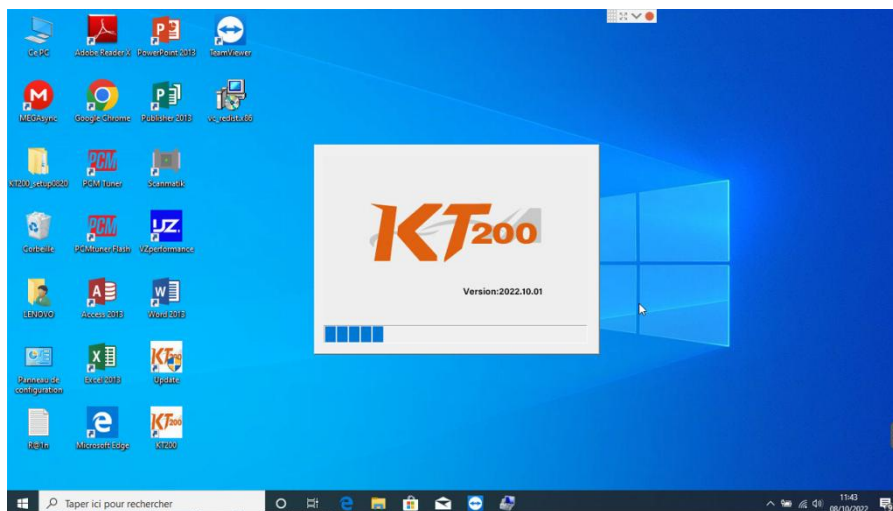


Step 2: Check it and click installer.





Step 3: Wait for the installation to complete. After the installation is complete, open software normally.



## 3 KT200 V11.01 Version, new optimization

### Installation Steps

#### Step1: Download and install KT200 service

Download the KT200 service installation package and complete the installation.

#### Step2: Install Driver

First install the device driver, open the device manager to install the driver, and successfully identify the device.

#### Step3: Download Software

Device identification, open KT200 service, select software download, wait for the software download to

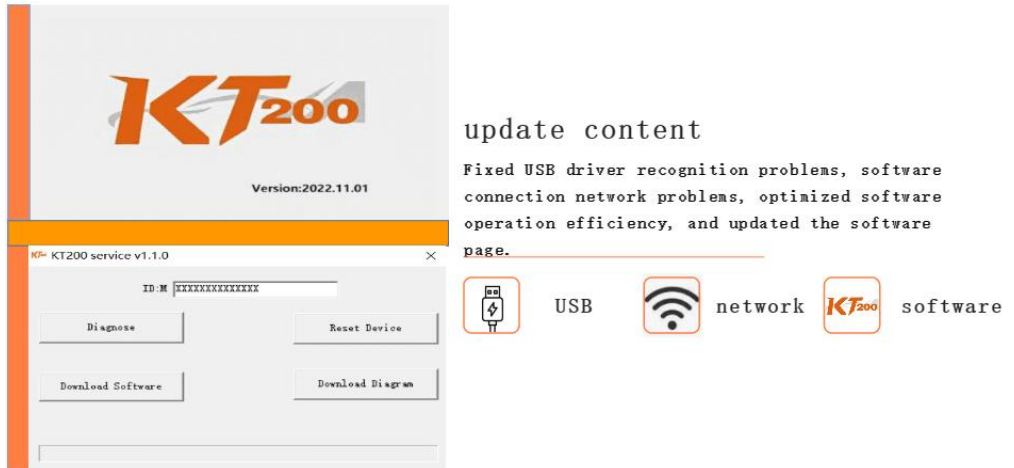


complete and execute the installation.

#### Step 4:Diagram Download

Enter the model, find the corresponding wiring method, and read and write data in the working mode.

## Update Content



The image shows a screenshot of the KT200 software interface. The top part of the window displays the 'KT200' logo and the version 'Version:2022.11.01'. Below this, there is a section titled 'update content' which lists updates: 'Fixed USB driver recognition problems, software connection network problems, optimized software operation efficiency, and updated the software'. To the right of this text, there are three icons: a USB icon, a network icon, and the KT200 logo, each followed by the text 'USB', 'network', and 'software' respectively. The main interface area contains a text field for 'ID.M' with a masked value 'XXXXXXXXXXXX', and four buttons: 'Diagnose', 'Reset Device', 'Download Software', and 'Download Diagram'.