

WELCOME TO THE CRESTVIEW VIRTUAL MEETING!

- Entering the Renovation Phase

While viewing today's meeting...

1. Keep your microphone muted
2. Enable or disable your camera
3. The meeting will be recorded

We will begin with a presentation followed by Q&A. During the presentation, if you have a question, please...



Ask your question using Zoom's Q&A function or "raise your hand"



If you are on a phone, we will unmute you during Q&A so you may ask your question



TRANSLATION SERVICES

- If you need translation in Spanish, please press the "Translation" button in Zoom and select the appropriate language.
- Questions can also be submitted in Spanish
- If you will not be utilizing translation services today, please press the "English" option.

- Si necesita traducción en español, por favor presione el botón "Traducción" en Zoom y seleccione el idioma apropiado.
- Las preguntas también se pueden enviar en español.
- Si no va a utilizar los servicios de traducción hoy, por favor presione la opción "Inglés".

TONIGHT'S AGENDA

1



Welcome and Introductions

2



**Brief
Presentation**

- The Renovation Phase

3



Q&A

4



Wrap-up and Next Steps

PARTNERSHIP

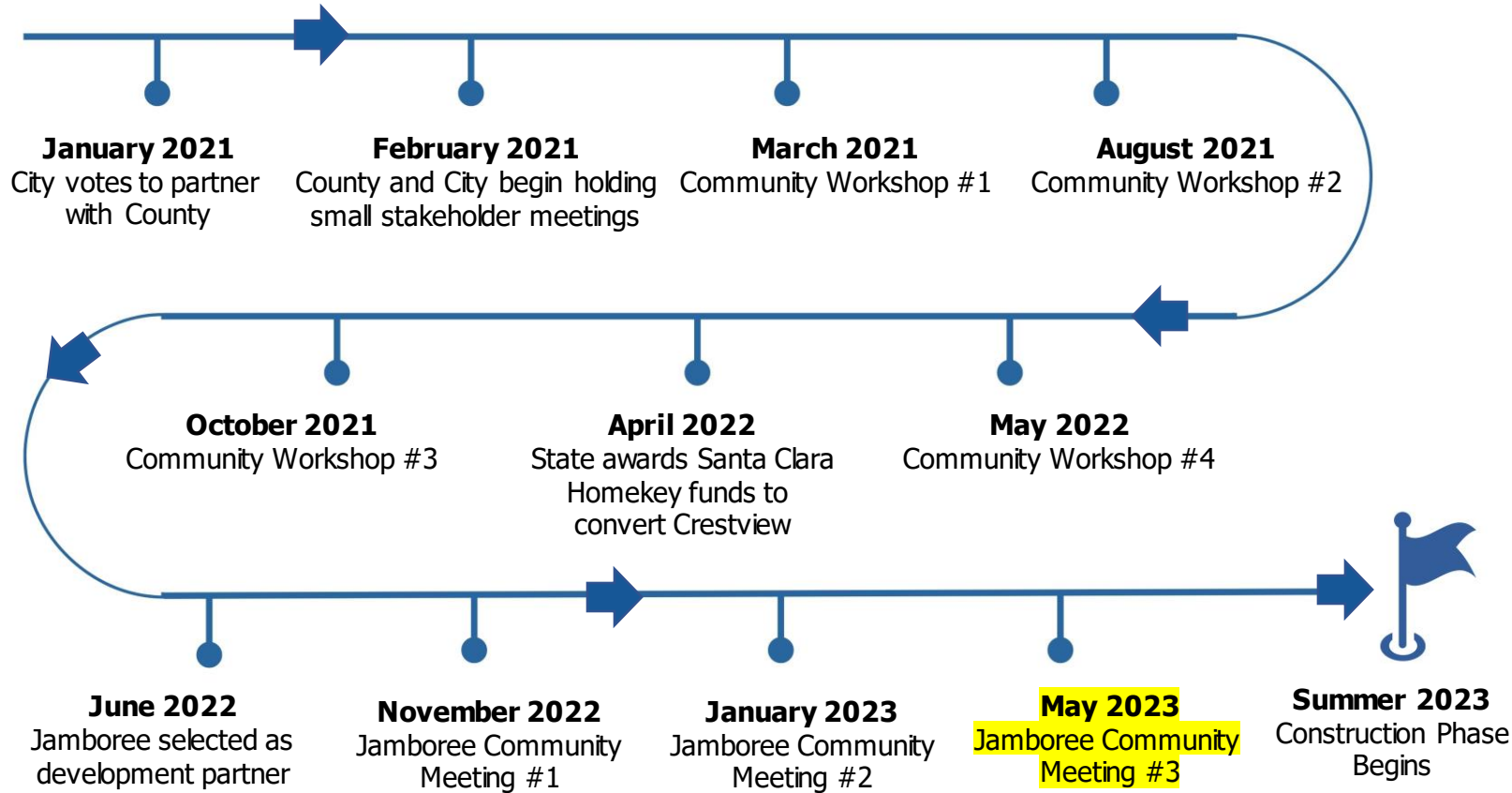


Jamboree



City of
**Mountain
View**

THE CRESTVIEW TIMELINE



Delivering on our goals

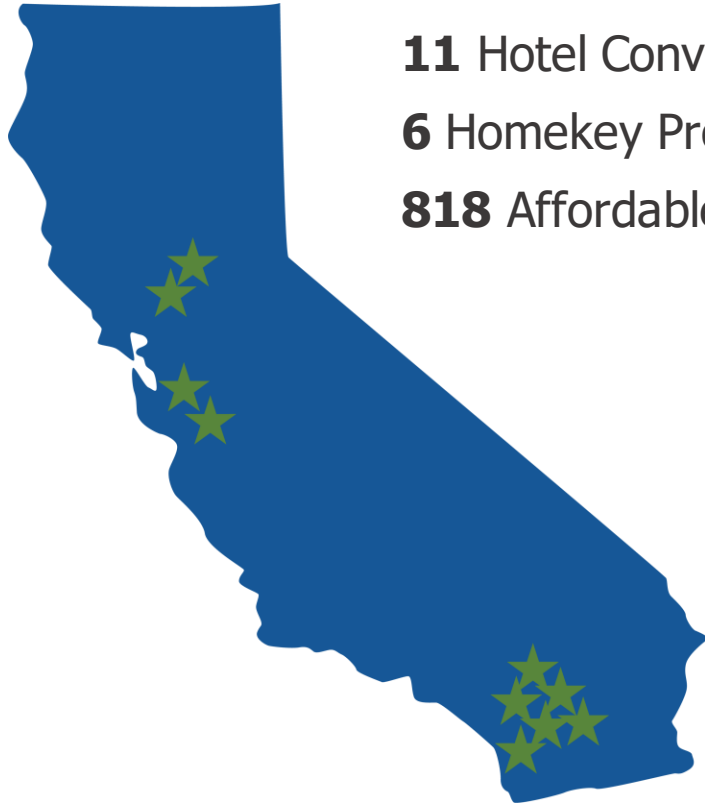
- Provide much needed housing and supportive services for Transitional Age Youth, and those at-risk of or experiencing homelessness in Santa Clara County.
- Create a stable, peaceful environment for residents to establish roots, reach goals, and thrive.
- Create affordable housing more rapidly than the construction of new units.

Next Steps

- Receive approval to start construction
- Continue to work with the Department of Housing and Community Development to ensure the development aligns with funding sources.

HOTEL CONVERSION AND HOMEKEY EXPERIENCE

Jamboree has extensive experience in developing and managing hotel and motel conversions.



11 Hotel Conversions

6 Homekey Projects

818 Affordable Apartments Created



Buena Esperanza
Anaheim, CA



Ascent
Buena Park, CA



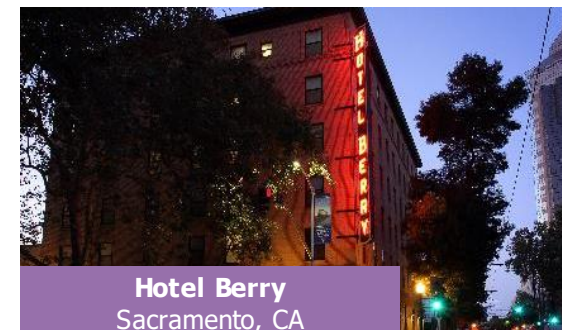
Vista Nueva
Sacramento, CA



Tahiti Hotel
Stanton, CA



Hillview Court
Milpitas, CA



Hotel Berry
Sacramento, CA



North Harbor Village
Santa Ana, CA

JAMBOREE HOTEL CONVERSIONS

Buena Esperanza

Anaheim

70 PSH units



Before

JAMBOREE HOTEL CONVERSIONS

Vista Nueva

Sacramento

117 PSH units



Before

JAMBOREE HOTEL CONVERSIONS

The Studios at Hotel Berry

Sacramento

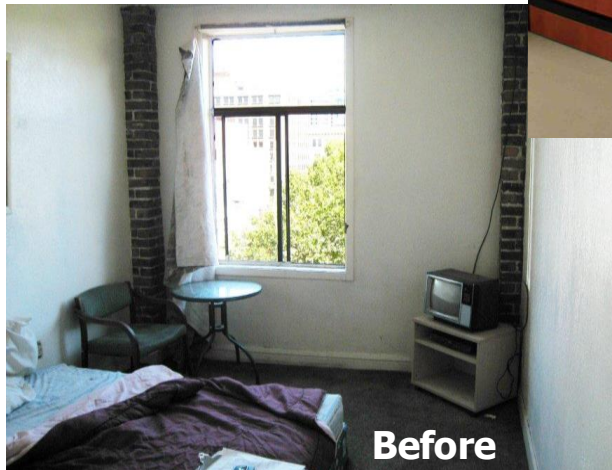
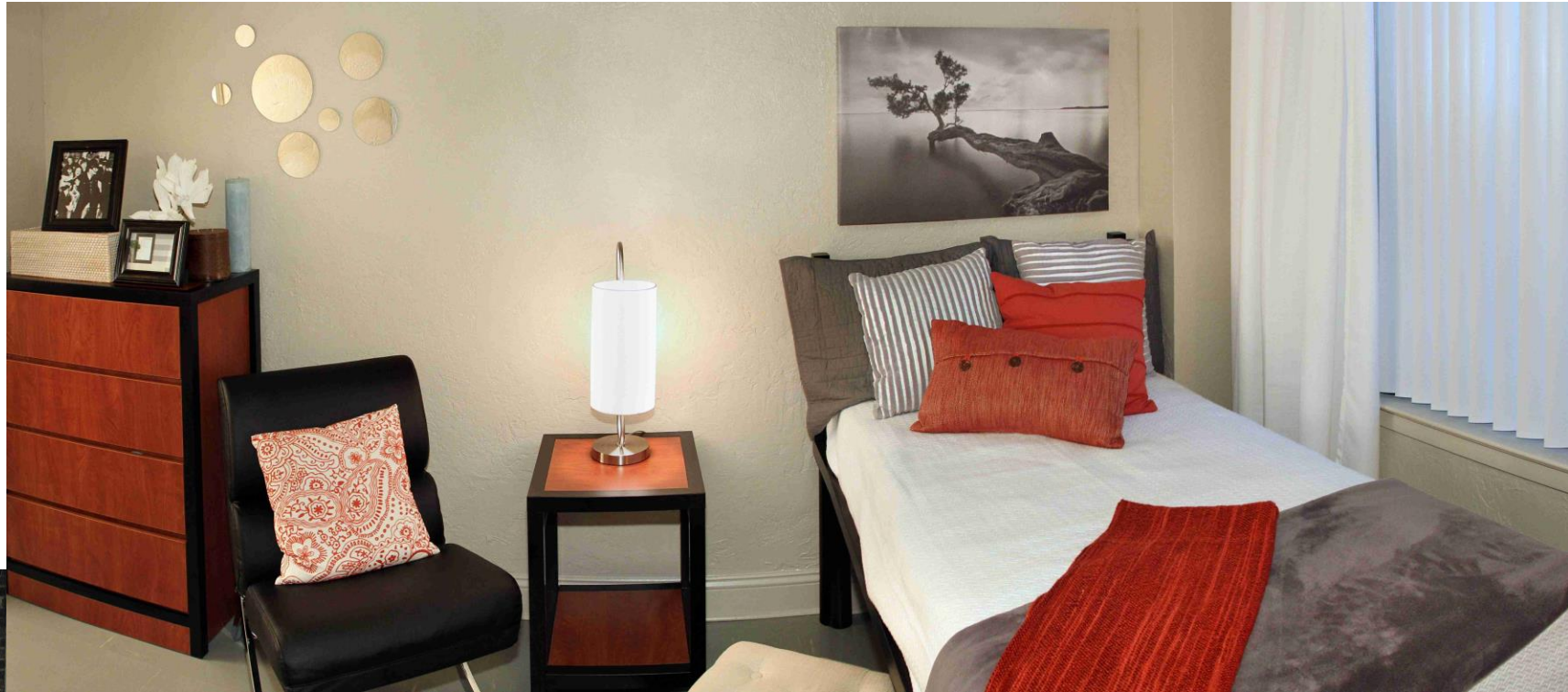
105 PSH units



JAMBOREE HOTEL CONVERSIONS

The Studios at Hotel Berry

Sacramento
105 PSH units



JAMBOREE HOTEL CONVERSIONS

Ascent

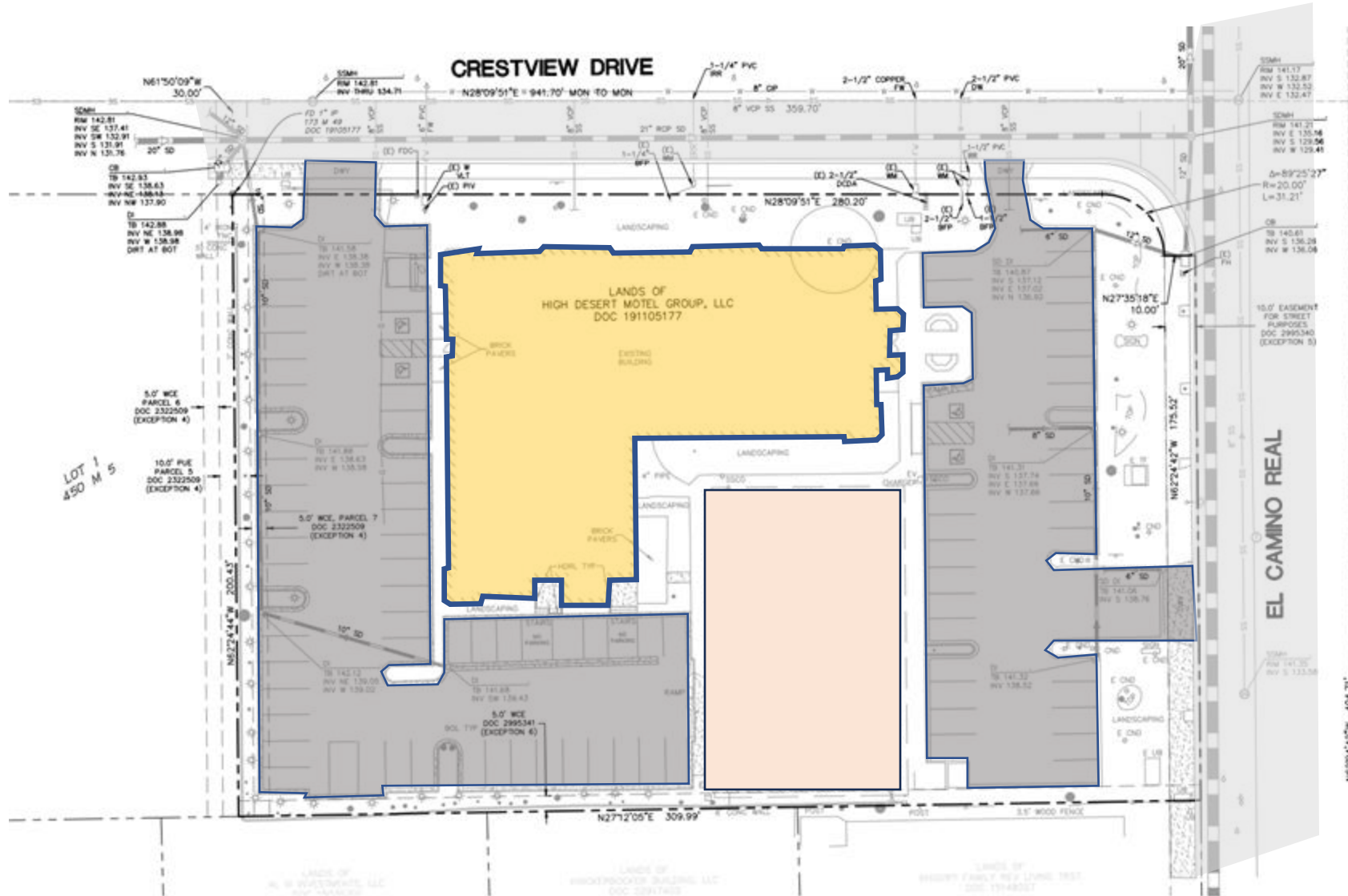
Buena Park

57 PSH units



Before

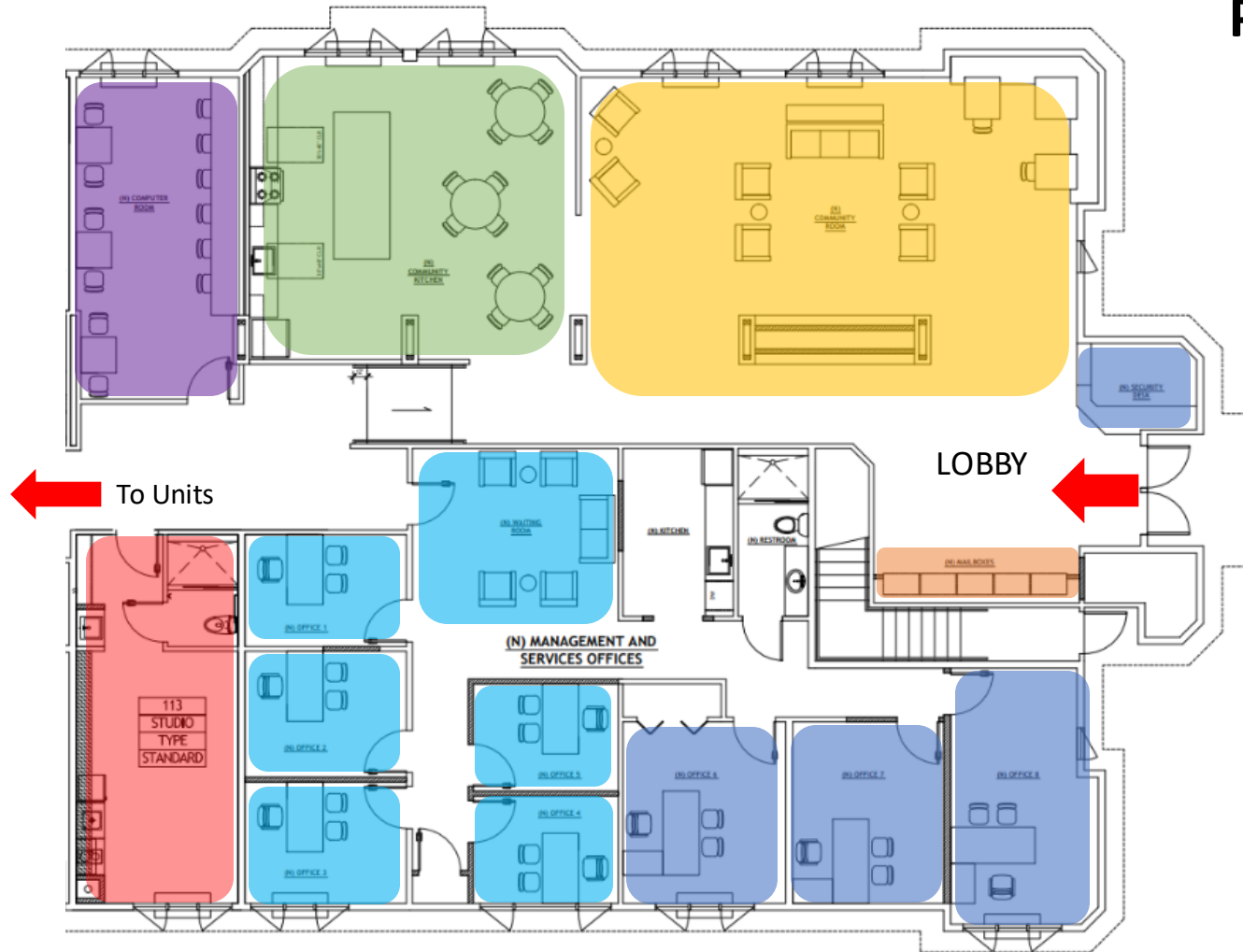
THE CRESTVIEW HOTEL CONVERSION - SITE



- Three Story Wood Framed Slab on Grade Hotel (Existing Building)
- Interior Rehab Units
- Minor Exterior Rehab of Building Exterior
- Onsite Parking
- Future Outdoor Amenities

THE CRESTVIEW HOTEL CONVERSION – FIRST FLOOR

Community Services and Property Management



Common Area

- Central Mail
- Community Room
- Community Kitchen
- Computer Room



Offices

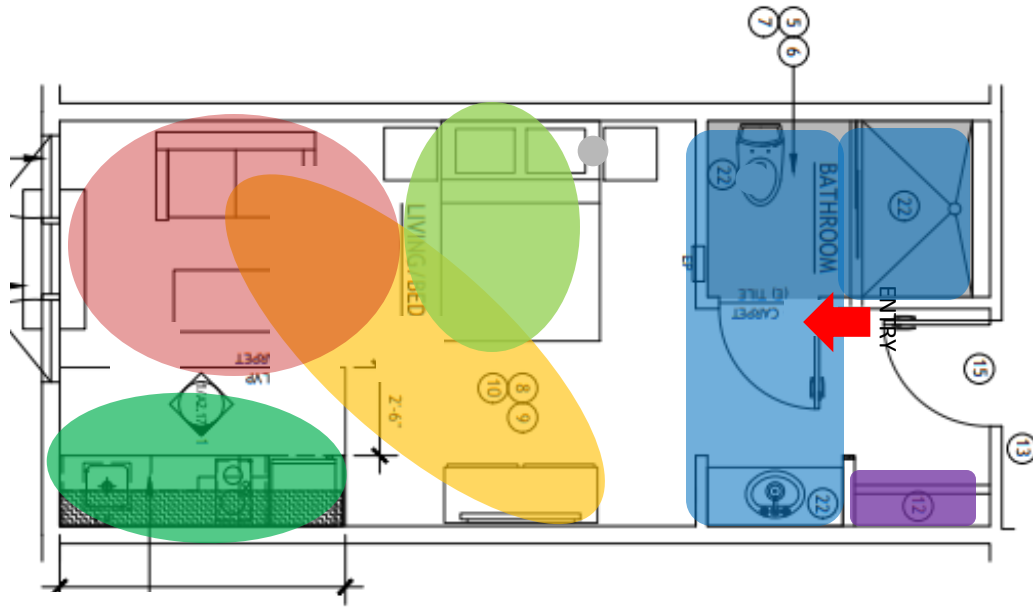
- Property Management
- Residential Services

Residential

- Studio



THE CRESTVIEW HOTEL CONVERSION - UNIT



± 345 sq.ft.

Residential Unit - Studio

- Wardrobe
- Bathroom
- Sleeping
- Entertainment
- Living
- Kitchen



CONSTRUCTION APPROACH

JAMBOREE BEST PRACTICES



Minimize neighborhood impact



Minimize delays



Worksite safety

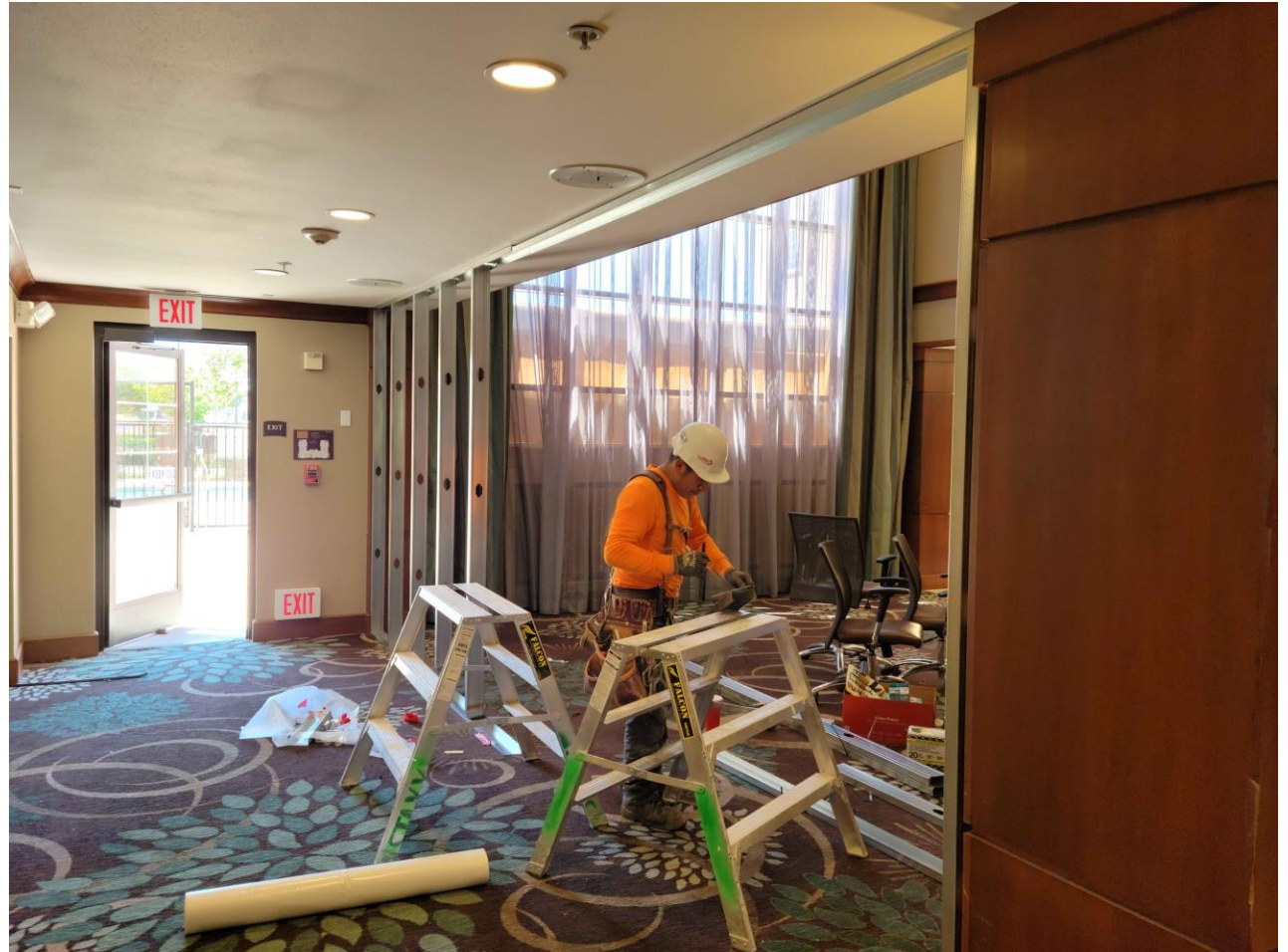


Open communication



Timely Response

To contact Jamboree with comments or concerns about construction
Email: outreach@jamboreehousing.com



PROVIDING CONTINUED FEEDBACK

- Jamboree, the City, and the County are committed to receiving feedback throughout the property's lifetime
- Jamboree property webpage and property management
- Annual Operational Report
- Community Collaborative

Jamboree: Outreach@jamboree.com

County: Community-Outreach-HCD@hhs.sccgov.org



City: Neighborhoods@mountainview.gov





QUESTIONS OR COMMENTS?

If you have a question or comment, please:

-  Type your question into the Q&A box or “raise your hand”
-  If you are on a phone, we will unmute you during Q&A so you may ask your question



THANK YOU!

Outreach@jamboreehousing.com

Website: www.jamboreehousing.com/CrestviewMountainView