

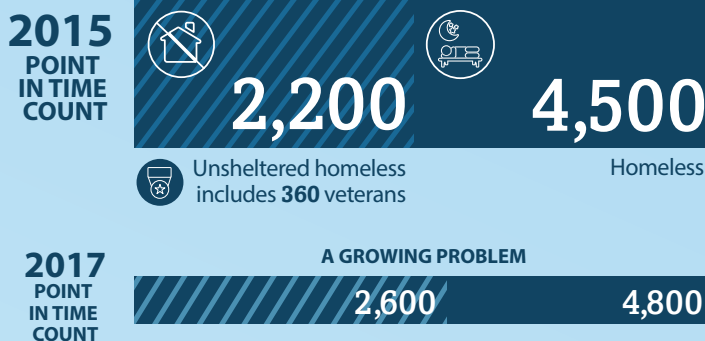
HOMELESSNESS IN ORANGE COUNTY



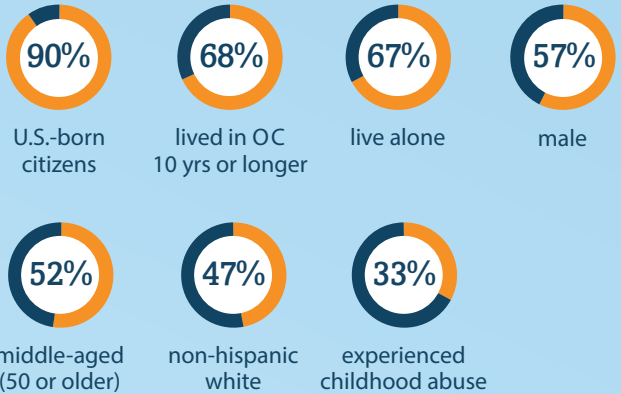
The Costs to Our Community

This **comprehensive** and **collaborative** study reveals the estimated costs of homelessness to Orange County and its 34 municipalities in 2014/15. It highlights the demographic and biographic characteristics of those experiencing homelessness. And, it assesses how costs vary from those living on the streets and in shelters vs. those living in alternative forms of housing.

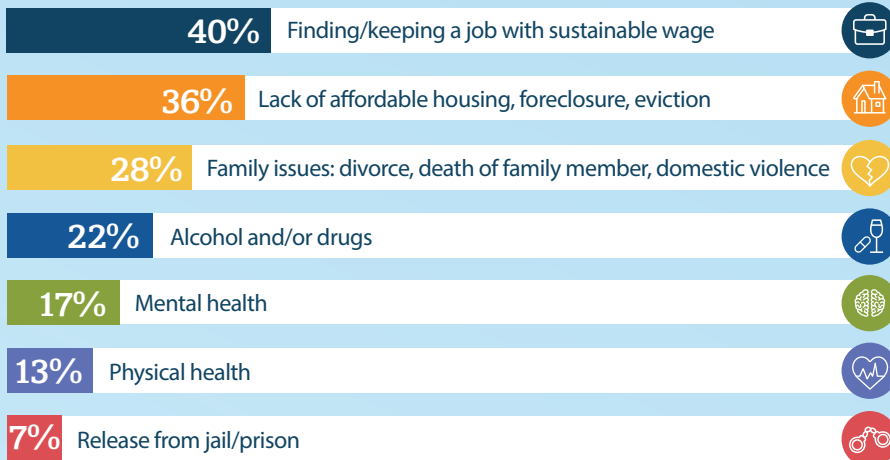
HOW MANY?



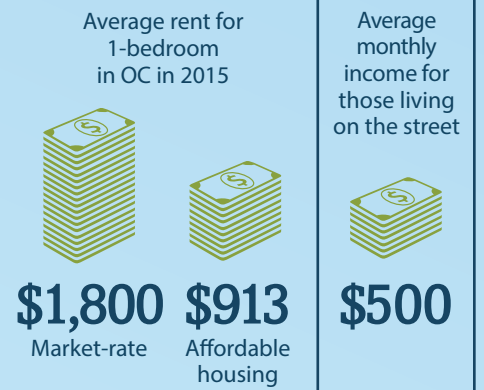
WHO ARE THEY?



Factors that lead to homelessness:



Housing Cost vs. Income



WHO PAYS?

How city and public service money is being spent on homelessness:

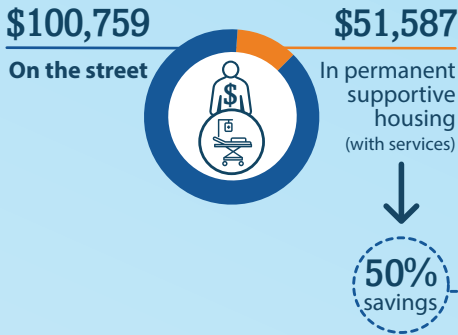


Total spending:

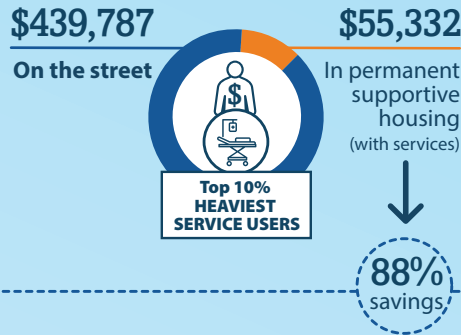


PERMANENT SUPPORTIVE HOUSING: A COST-SAVING SOLUTION

Chronic homeless (those with a disability)
Annual cost of ALL services per person:

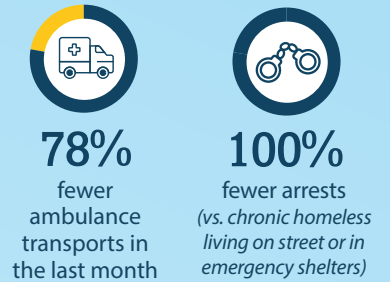


Chronic homeless (top 10%)
Annual cost of ALL services per person:



HOW HOUSING REDUCES COSTS

When housed, chronic homeless have:

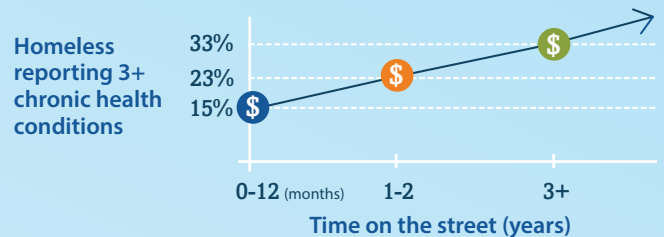


Annual cost savings by housing & providing services to all OC's chronic homeless:



WHY IT'S URGENT

Chronic health conditions increase over time:



WHAT'S NEXT?



CREATE
greater awareness and understanding



FORMALIZE
shared goals and defined roles



DEVELOP
increased housing goals with agreed-upon timeline



PRIORITIZE
populations to house first



ASSESS
and redeploy resources

Align + Collaborate + Bridge gaps = #EndHomelessnessOC

Download infographic and full report at: jamboreehousing.com/oc-homelessness-cost-study



Findings are based on data collected from five main sources: the County of Orange, the municipalities within the county, Orange County hospitals (via the Hospital Association of Southern California and Cal Optima), a sample of non-governmental agencies addressing homelessness and individuals experiencing homelessness themselves. Data was gathered through questionnaires sent to municipalities, hospitals, service agencies, as well as structured in-person survey interviews conducted with a sample of 252 homeless individuals throughout the county. Given the breadth and volume of data assembled, this is one of the most comprehensive studies of the public costs of homelessness in the United States.

This is a collaborative study among Orange County United Way, Jamboree Housing Corporation, and the University of California, Irvine – with the support of the Association of California Cities-Orange County (ACC-OC), 2-1-1 of Orange County, and the Hospital Association of Southern California – as part of the County's 10 Year Plan to End Homelessness and its new Office of Care Coordination.