

# Homelessness

## A Snapshot of Housing Options & Approaches



### TYPES OF HOMELESSNESS

#### 1. Non-chronic

#### 2. Chronic

A homeless individual or head of household who has:

a disability

been homeless in past 3 years:

- at least 12 months OR
- on at least 4 separate occasions

### HOUSING OPTIONS

	Emergency shelter	Bridge housing (transitional)	Rapid re-housing*	Permanent supportive housing*
<b>Population</b>	Non-chronic, Chronic	Non-chronic	Non-chronic	Chronic
<b>Timeframe</b>	Overnight (first-come, first-served)	Temporary (6-24 mos)	Immediate and long-term	Immediate and long-term
<b>Services</b>	Minimal services	Temporary supportive services	Moving assistance, tapered supportive services & rent assistance	Permanent supportive services
<b>Goals/Focus</b>	Safety	Stability/reintegration	Stability/independence	Stability

\* Housing First

### HOUSING APPROACHES: THEN AND NOW

#### THEN: TREATMENT FIRST

**Belief: A behavioral issue** > Homelessness is a result of poor lifestyle choices.

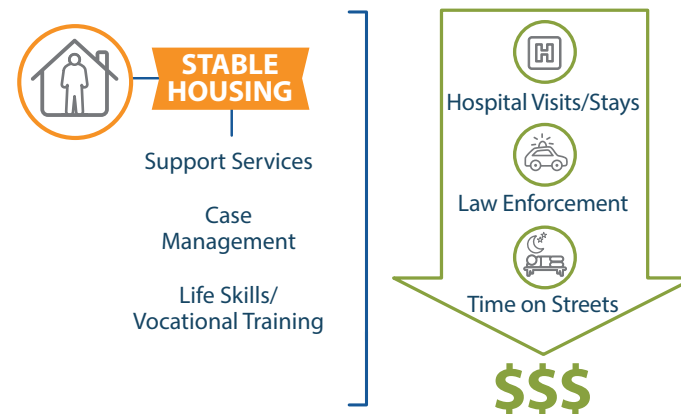
**Approach:** Requires the person to address issues (health, addictions, unemployment, etc.) *before* receiving permanent housing. Housing is a reward for changed behavior – almost impossible to achieve on the streets.



#### NOW: HOUSING FIRST

**Belief: A housing issue** > Homelessness is a result of not having housing.

**Approach:** Removes barriers to acquiring housing so the person is housed with supportive services first – and as quickly as possible. The resulting stability provides a foundation to address life issues. It accelerates success AND lowers costs.



### TURNING THE TIDE: A BI-PARTISAN COMMITMENT

<p> <b>George H.W. Bush</b> 1981-1993</p> <ul style="list-style-type: none"> <li>• Research findings change federal conversation: treatment first to housing first</li> </ul>	<p> <b>George W. Bush</b> 2001-2009</p> <ul style="list-style-type: none"> <li>• Defines chronic/non-chronic homeless</li> <li>• 10-year Plan to End Homelessness: "Housing First"</li> </ul>	<p> <b>Barack Obama</b> 2009-2017</p> <ul style="list-style-type: none"> <li>• Expands plan to end homelessness for ALL types (chronic, youth, veterans, etc.)</li> </ul>
---	---	---

### NEXT

Find out how permanent supportive housing can save cities, municipalities, hospitals and law enforcement millions each year, and realistically end homelessness. Find an easy-to-read infographic, or download the Cost of Homelessness in Orange County Report and Executive Summary at [jamboreehousing.com/oc-homelessness-cost-study](http://jamboreehousing.com/oc-homelessness-cost-study).

