

The Teddy Bear Museum

German bears tend to be thought of as not only the first bears to be made, but invariably of good quality.



TEDDY BEAR MUSEUM
'Grandmas Teddies'

This may or not be the case, but there can be no doubt that many types of German bears are sought after today not only because of their age but because they are beautifully made and loved by all those who appreciate the best.

Bing

There is something very special about a Bing teddy bear, they just ooze charm, style and cuddleability! Then there's a Bing with a tag! Well, words escape me! Gebrüder Bing was founded in Nürnberg, Germany in 1865 by Ignaz and Adolf Bing, as a tin and kitchenware manufacturer. In 1907 Gebrüder Bing made their first bears, joining the teddy bear revolution at its height. To distinguish their bears, Gebrüder Bing used a metal arrow in the bear's ear, with the initials G.B.N. set in a diamond. Later the tag was moved from the ear to under the arm. Around 1920 a metal label attached to the right arm replaced the tag.

In 1919 Gebrüder Bing Nürnberg was renamed Bing-Werke. The company was very successful in the toy industry, until 1927.

Typical Bing teddy bears can be recognized, among other things, by the paws embroidered with four claws and the pads coming to a point at the heel where the seams then go up the back of the legs.

1908 Rattle:

Rattle is a lovely 14 inch Bing, he dates from 1908 with boot button eyes. His ears are sewn into the side of his head which helps to date him. He has very long arms and typical Bing ankles. He has a large metal canister which goes from right across his collar bone to his hips.



1910 Trupple:

Trupple is a very early Tripple Trapple. He is a rare, hard to find bear. One of the most fabulous pieces of social history I have ever seen. The tag in the photo below is in exceptional condition. Can you imagine a child in 1908-10, before the First World War, who would be lucky enough to have a moving toy bear like this? Amazing!



1910 Kaiser Wilhelm:

Kaiser Wilhelm is a rare beautiful blond Bing mechanical teddy bear with a movable head from 1910. He is wound through a spring balancer with a key, and a lateral keyhole. He is 14 ins tall, has long arms and legs and a quite thoughtful look with his head held high and a long straight nose! Patent marks on the metal keyhole, 'DRPA' and '5 DRGM' (Deutsches Reichsgebrauchsmuster, until 1944)





ABOVE: Trippe Trappel Tags.

1910 Bing-a-ling:

Bing-a-ling is a large, rare beautiful golden Bing from about 1910. She is 22 inches tall. She has long arms and legs and a quite haughty look with her head held high and a long straight nose! Her glass eyes are most expressive. She has a wonderful tilt musical mechanism which plays beautiful music!



1912 Zara:

Zara is a lovely friendly antique Bing teddy from c1912 in magnificent condition. Her thick blond mohair is long and silky. Pads are original and come to a point at the rear. 4 claws on paws and pads. The leg seam is at the back. She has a hump on her back and is fully jointed. She is a big 20" and is really cuddly with appealing eyes.



1915 Joshua:

Wonderful rare antique, German Gebruder Bing teddy bear. Measuring 16" from pads to tips of ears. Original classic small black boot button eyes. Nose and mouth stitching are original and vertical. Joshua has a magnificent mohair coat and a pronounced snout, small cupped ears, beige felt pads. Four single long black stitches to paws and pads, leg seam at the rear. A magnificent Bing



1920 Bernhard:

Bernhard is an antique Bing "Sentry" bear from 1912-1925 who is very appealing ... he is made from a lovely apricot-cinnamon coloured mohair. He is 13 inches tall. He has amber glass eyes with reverse painted black pupils and the remains of a vertically stitched floss nose. His disc joints are metal. He is a very handsome bear indeed, a sturdy old boy. His felt feet pads are pointed at the back and his leg seams are at the front and back.



Skater:

Wonderful rare antique, German Gebruder Bing teddy bear with his red tag on the arm of his coat. Measuring 8" from skates to tips of ears. Original small black boot button eyes. Nose and mouth stitching are original and horizontal. He has a magnificent mohair coat and a pronounced snout, small cupped ears and felt pads. Wonderful old bear, who is still sturdy and strong for his 100 years. He has two similar family members

IMAGE ON NEXT PAGE





1920 Albert:

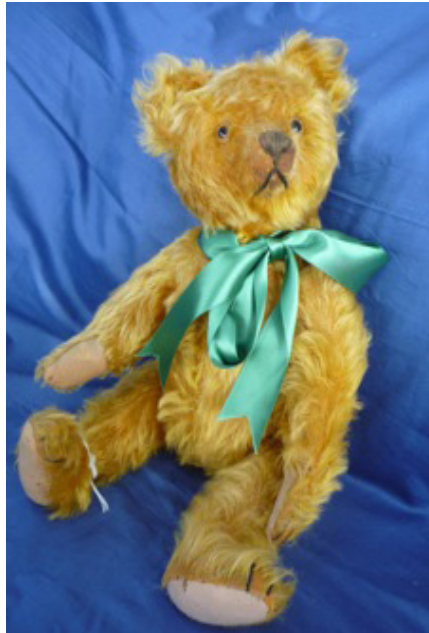
A dearly loved, white mohair Sentry Bing bear called Albert, with rare metal ID button attached to the back of his right paw. Typical of a Sentry Bing of this period, Albert's legs are seamed at the back and his footpads are pointed at the heel so he appears to be standing on tiptoe. This exceptionally special character is wearing his velvet waistcoat pinned with a Queen Victoria replica fob watch.



Mr Bing:

Beautiful and very rare long mohair Gebruder Bing Teddy Bear. Deep cinnamon mohair. Mr.Bing has his original eyes, brown nose and mouth and 4 stitches to paws and pads. His pads have a point at the back and his leg seams are at the back too. He has a lovely quirky smile and a very positive atti-

tude no matter where he goes... He is a large 18" tall, and has the very recognisable muzzle and large hump back design on all old Bing bears.



1927 Teddy Ody:

This is a lovely Bing Teddy bought from a private collection from the Netherlands named Ody! He is a sturdy old boy and completely original. He has his original glass eyes, mouth and nose stitching. His feet are slightly pointed at the back and his leg seams are at the back. Also he wears his old blue Bing tag on his right arm!



1930 Pokermon:

Pokermon is a magnificent pink 17 in. antique teddy bear with a charming sweet face! . Original amber glass eyes. Shaved muzzle. Very long stitched smile extending almost the width of the muzzle. Distinctive vertical nose stitching nicely framed. Non-working growl mechanism inside his torso. A most beautiful bear



.....and so to the End:-so many bears who are "fantastisch" or noble with "qualität" Such fabulous characters.We love them all!



TOP LEFT: Bing Skaters

MIDDLE LEFT: Albert.

MIDDLE TOP: Mr Bing

MIDDLE LOWER: Teddy Ody

ABOVE: Pokermon

