

GISELA MAYER



WIGS

NEXT GENERATION

HERE WE GO! – NEXT GENERATION

DE

Die NEXT GENERATION ist da und setzt ein Statement! Mehr Trend, mehr Color, mehr Style - Knallige Farben und junge Cuts, die keine Kompromisse eingehen. Die neuen Farben fire red und blue/pink sind echte Eyecatcher in der neuen Collection. Ein ganz besonderes Highlight der neuen Kollektion ist die einzigartige Kombination aus Trend Color und Power Fiber: High Heat Modelle sind jetzt in tollen Balayage Nuancierungen erhältlich! Lieblingsfarben wie fashion grey und silver blond sind auch bei den neuen Modellen nicht mehr wegzudenken und machen damit die Auswahl komplett. Viele weitere frische Cuts machen aus der NEXT GENERATION eine Kollektion, die neue Standards setzt und mit selbstbewussten Styles überzeugt!

GB

More trends, more colours, more styles – the new NEXT GENERATION Collection. Loud colours & fresh cuts will entirely captivate you. These are the special highlights this collection offers: Fire red and blue/pink –teasing new colours you can't ignore. Power Fiber: High Heat styles in stunning Balayage nuances and other trendy shades. New styles in the highly demanded colours fashion grey and silver blond. This and lots of other fresh cuts - NEXT GENERATION a self-confident, young and innovative collection!

FR

La NEXT GENERATION est là et fait une déclaration ! Plus de tendance, plus de couleur, plus de style - des couleurs vives et des coupes jeunes qui ne font pas de compromis. Les nouvelles couleurs fire red et blue/pink sont de véritables accroche-regards dans la nouvelle collection. Un point fort tout particulier de la nouvelle collection est la combinaison unique de Trend Color et de Power Fiber : les modèles High Heat sont désormais disponibles dans de superbes nuances de balayage !

Les couleurs préférées comme le fashion grey et le silver blond sont également incontournables pour les nouveaux modèles et complètent ainsi la sélection. De nombreuses autres coupes fraîches font de la NEXT GENERATION une collection qui établit de nouveaux standards et qui convainc par ses styles affirmés!

IT

Next Generation e' qui e promuove: Più trend, Più colori e più stile – Colori vivaci e tagli giovanili che non scendono a compromessi. I nuovi colori Fire red e Blu/Pink sono dei veri e proprio eye-catcher della nuova collezione. La combinazione unica di Trend Color e Power Fiber e' un Highlight speciale della nuova collezione: I modelli High Heat sono ora disponibili anche in meravigliose tonalità di balayage. I colori favoriti come il Fashion grey e Silver Blond sono indispensabili anche per i nuovi modelli e completano la selezione.

Molti altri tagli freschi rendono la NEXT GENERATION una collezione che stabilisce nuovi standard e convince con un stile sicuro di sé!

ES

¡La Próxima Generación NEXT GENERATION está aquí y está haciendo una declaración! Más tendencia, más color, más estilo: colores brillantes y cortes jóvenes que no hacen concesiones. Los nuevos colores rojo fuego y azul/rosa son realmente llamativos en esta nueva colección. Un punto culminante y muy especial de la nueva colección, es la combinación única de Trend Color y Power Fiber. ¡Los modelos High Heat ahora están disponibles en excelentes matices de balayage! Los colores favoritos como el gris fashion y el rubio plateado se han vuelto indispensables en los nuevos modelos y completan la selección. ¡Muchos otros cortes frescos hacen de NEXT GENERATION una colección que establece nuevos estándares y convence con estilos seguros de sí mismos!



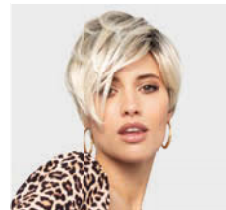
ALEA
★★★ (LACE PART)

12/26+8 Dark Blond Rooted
Seite 6



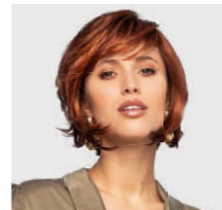
ALESIA MONO
LACE SOFT

★★★ +LF
Light Blond Seite 11



CLIC
★★★ +LF

L22+4 Light Blond Rooted
Seite 9



CLOUD
★★ +SLF

28-1002+8 Fire Rooted
Seite 14



DATE
★★

L22+4
Seite 35



ENERGY CLUB
★★★

Fire Red
Seite 29



ENERGY LOOK
★★★+SLF

Blue/Pink
Seite 28



EVER
★★

10/16/27+10 Bernstein Rooted
Seite 17



EVER MONO LACE
★★★★+LF

23/14-14 Sandy Blond Mix
Seite 18



FINIA
★★★(LACE PART)

12/8-8 Caramel Fudge
Seite 7



HI BESO
★★★

14/88+8 Champagne Balayage
Seite 31



HI CLIC
★★★+LF

28/29-135 Hot Flame Balayage
Seite 35



HI CLUB
★★

10/16/27+10 Bernstein Balayage
Seite 33



HI FLIRT
★★★(LACE PART)

Violet/Root
Seite 10



HI JILL
★★★(LACE PART)

23/14 Biscuit Blond Balayage
Seite 20



HI LYNN
★★★(LACE PART)

22/25+10 Honey Blond Rooted
Seite 34



HI PAULINE
★★★+LF

23/14 Biscuit Blond Balayage
Seite 33



HI PAULINE SMALL
★★★★+LF

23/14 Biscuit Blond Balayage
Seite 33



HI RUN
★★+SLF

23/14 Biscuit Blond Balayage
Seite 4



HI RUN EXTRA
★★★(LACE PART)

10/16/27+10 Bernstein Balayage
Seite 5



HI UNO
★★★+LF

14/88+8 Champagne Balayage
Seite 32



HIGH END LIGHT PAGE
★★★★★+LF

61 Seite 16



HIGH END PAGE LARGE
★★★★★+LF

61 Seite 16



ISA MONO LACE
★★★★+LF

27/60F+8 Biscuit Blond Rooted
Seite 26



JULE
★★★★+LF

12/26+8 Dark Blond Rooted
Seite 30



KATE SOFT
★★★★+LF

28/29-135+33 Hot Flame
Seite 34



KATE LACE
★★★★+LFS

28/29-135+33 Hot Flame
Seite 34



LIO LACE PART
★★★(LACE PART)

RL19/23 Biscuit Blond
Seite 13



MARCELLO LACE PART
★★★

10MS
Seite 27



MARO MONO LACE
★★★★+LF

29/28/33 Tobacco Seite 23



MARO MONO LACE LARGE
★★★★+LF

29/28/33 Tobacco Seite 23



MARO MONO LACE SMALL
★★★★+LF

29/28/33 Tobacco Seite 23



MIKA
★★★(LACE PART)

27/60F+8 Biscuit Blond Rooted
Seite 21



MORA
★★★(LACE PART)

16/39+8 Soft Balayage Rooted
Seite 22



NEW JOY LACE
★★+SLF

22/16+14 Sandy Blond Rooted
Seite 12



NEXT
★★(LACE PART)

28/29-135+33 Hot Flame
Seite 15



NIABI
★★★(LACE PART)

25/102/88+10 Dark Champagne Rooted
Seite 24



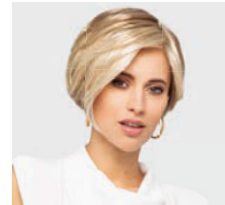
NUBA MONO LACE
★★★★+LF

16/80/100+12 Light Bernstein Rooted
Seite 25



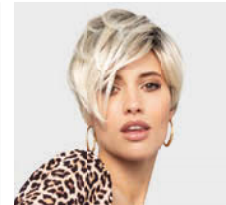
ROSE
★★

22/14-14+12 Champagne Rooted
Seite 8



SPECIAL VICKY
★★★(LACE PART)

1001/88-14
Seite 19



SUPER CLIC
★★+SLF

L22+4 Light Blond Rooted
Seite 9

4



135/4-2
Aubergine Balayage



10/16/27+10
Bernstein Balayage



12/14/26+12
Dark Blond Balayage



14/88+8
Champagne Balayage



22/16+14
Sandy Blond Balayage



23/14+6
Pearl Blond Balayage



23/14
Biscuit Blond Balayag



28/29-135+33
Hot Flame Balayage

MH

**23/14
Biscuit Blond
Balayag**



next generation



HIRUN ** +SLF 100% HIGH HEAT FIBER

MH

10/16/27+10
Bernstein Balayage



23/14+6
Pearl Blond
Balayage



Wigs



1B
Black



4/6
Dark Brown



27/4-4
Chocolate
Hazelnut



8/6/27
Mocca Mix

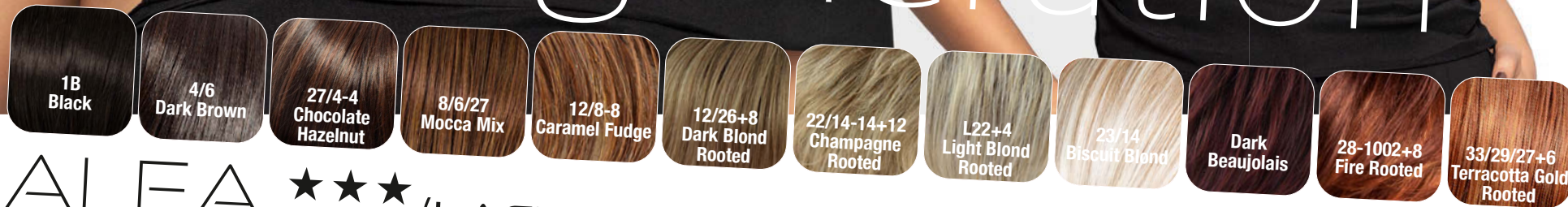
HI RUN EXTRA ★★★ (LACE PART) 100% HIGH HEAT FIBER

6

MH

12/26+8
Dark Blond Rooted

next generation



ALEA ★★★ (LACE PART)

MH

12/8-8
Caramel Fudge



WIGS

- 1B Black
- 4/6 Dark Brown
- 27/4-4 Chocolate Hazelnut
- 8/6/27 Mocca Mix
- 12/8-8 Caramel Fudge
- 12/26+8 Dark Blond Rooted
- L22+4 Light Blond Rooted
- 22/14-14+12 Champagne Rooted
- 23/14 Biscuit Blond
- Dark Beaujolais
- 28-1002+8 Fire Rooted
- 33/29/27+6 Terracotta Gold Rooted

FINIA ★★★ (LACE PART)

8

MH

22/14-14+12
Champagne Rooted



next generation

- 1B Black
- 4/6 Dark Brown
- 27/4-4 Chocolate Hazelnut
- 8/6/27 Mocca Mix
- 12/8-8 Caramel Fudge
- 12/26+8 Dark Blond Rooted
- L22+4 Light Blond Rooted
- 22/14-14+12 Champagne Rooted
- 23/14 Biscuit Blond
- Dark Beaujolais
- 28-1002+8 Fire Rooted
- 33/29/27+6 Terracotta Gold Rooted

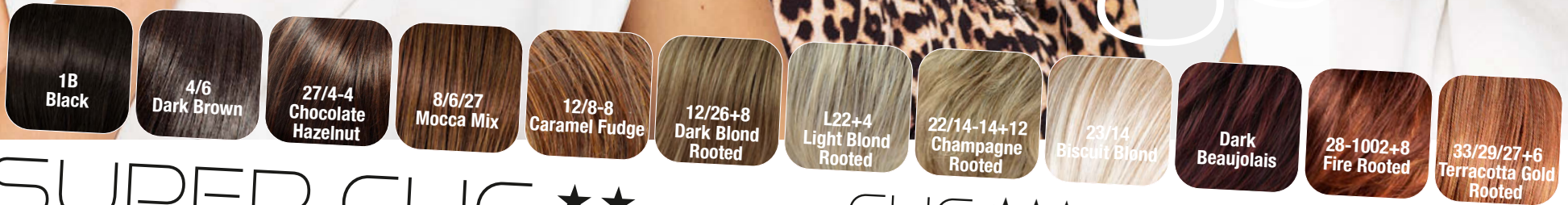
ROSE ★★

MH

L22+4
Light Blond
Rooted



Wigs



SUPER CLIC ★★ +LFS

CLIC ★★★ +LF

1B, 135/4-2, 27/4-4, 8/6/27, 12/14/26, L22+4, 22/27-12+12, 24/22/27+6, 33/29/27+6, 29/133-130+33, 101/51+6, Fashion Grey, Silver Blond, 305+Root, 1001+6(Root), Pastel Rose, Lavander Rooted

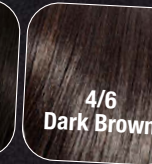
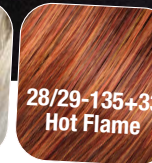
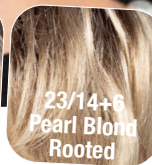
10

MH

Violet/Root



next generation



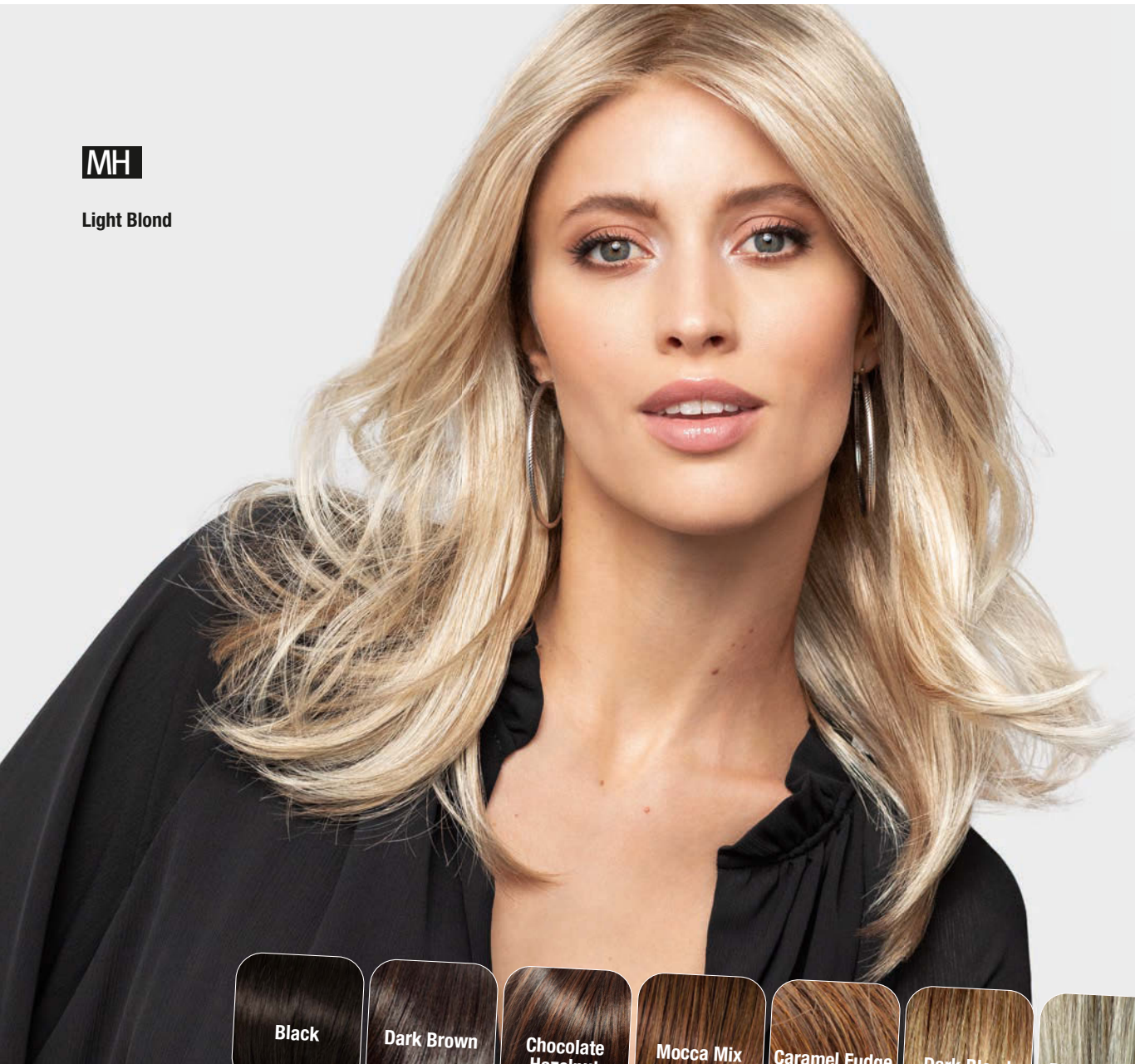
HI FLIRT

(LACE PART)

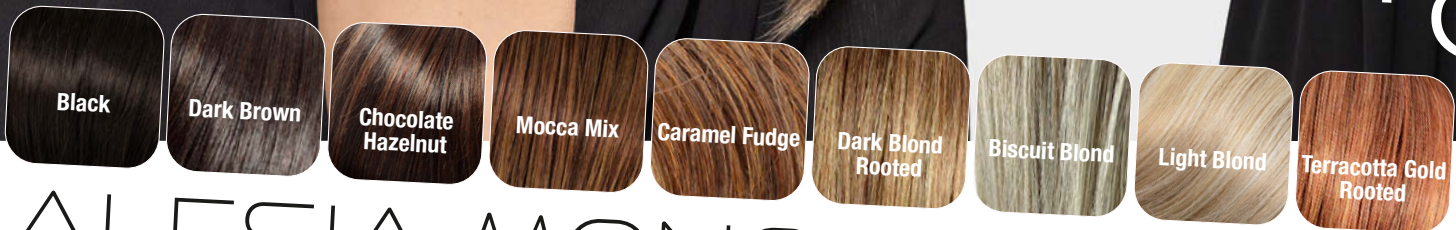
HIGH HEAT FIBER

MH

Light Blond



wigs



ALESIA MONO LACE SOFT ★★★★★ +LF

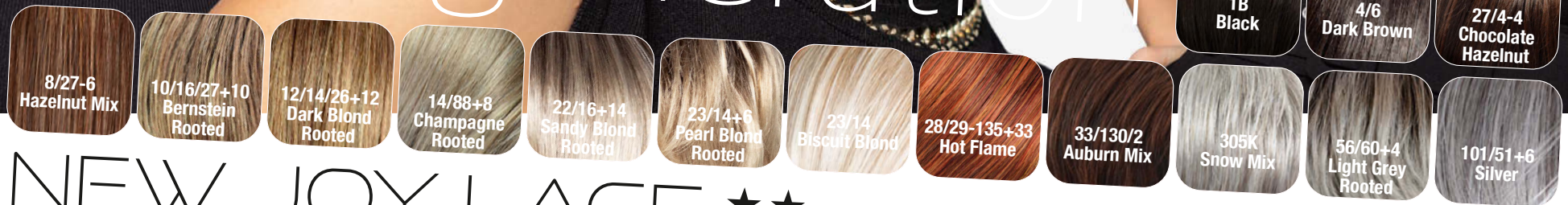
12

MH

22/16+14
Sandy Blond
Rooted



next generation



NEW JOY LACE ★★+SLF

8/27-6
Hazelnut Mix

10/16/27+10
Bernstein
Rooted

12/14/26+12
Dark Blond
Rooted

14/88+8
Champagne
Rooted

22/16+14
Sandy Blond
Rooted

23/14+6
Pearl Blond
Rooted

23/14
Biscuit Blond

28/29-135+33
Hot Flame

33/130/2
Auburn Mix

305K
Snow Mix

56/60+4
Light Grey
Rooted

101/51+6
Silver

1B
Black

4/6
Dark Brown

27/4-4
Chocolate
Hazelnut

GM

RL19/23
Biscuit Blond



Wigs



LIO LACE PART ★★★ (LACE PART)

74

MH

28-1002+8
Fire Rooted



next generation

- 1B Black
- 4/6 Dark Brown
- 27/4-4 Chocolate Hazelnut
- 8/6/27 Mocca Mix
- 10/16/27+10 Bernstein Rooted
- 12/14/26+12 Dark Blond Rooted
- 14/88+8 Champagne Rooted
- RN22/14-14 Golden Blond Mix
- 23/14 Biscuit Blond
- 23/14-14 Sandy Blond Mix
- 23/14+6 Pearl Blond Rooted
- 28-1002+8 Fire Rooted
- Dark Beaujolais

CLOUD ★★ +SLF

MH

28/29-135+33
Hot Flame



wigs



- 8/6/27 Mocca Mix
- 27/4-4 Chocolate Hazelnut
- 10/16/27+10 Bernstein Rooted
- 12/14/26+12 Dark Blond Rooted
- 14/88+8 Champagne Rooted
- 23/14 Biscuit Blond
- 23/14-14 Sandy Blond Mix
- 23/14+6 Pearl Blond Rooted
- 28/29-135+33 Hot Flame
- 48/38Root Stone Grey
- 305K Snow Mix
- 1B Black
- 4/6 Dark Brown
- 56/60+4 Light Grey Rooted

NEXT ** (LACE PART)

16

MH

61



HIGH END LIGHT PAGE

★★★★★★

+LF

4/6, 8/6/27, 10/16/27+10, 12/14/26+12, 14/88+8, N22/14-14, 22/15H, 305K, 61

HIGH END PAGE LARGE

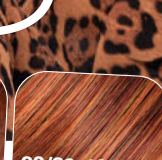
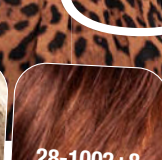
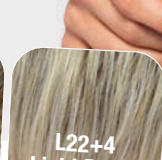
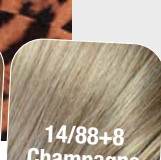
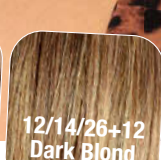
★★★★★★

+LF

4/6, 27/4-4, 8/6/27, 10/16/27+10, 12/14/26+12, 14/88+8, 22/15-14, 33/29/27+6, 23/51-4+4, 61

MH

10/16/27+10
Bernstein
Rooted



EVER **

18

MH

23/14-14
Sandy Blond Mix



next generation



4/6
Dark Brown



27/4-4
Chocolate
Hazelnut



8/6/27
Mocca Mix



10/16/27+10
Bernstein
Rooted



12/14/26+12
Dark Blond
Rooted



14/88+8
Champagne
Rooted



L22+4
Light Blond
Rooted



23/14-14
Sandy Blond
Mix



28/29-135+33
Hot Flame



28-1002+8
Fire Rooted



48/38Root
Stone Grey



305K
Snow Mix



56/60+4
Light Grey
Rooted

EVER MONO LACE ★★★★★ +LF

MH

1001/88-14

Blue/Violet



wigs



SPECIAL VICKY ★★★ (LACE PART)

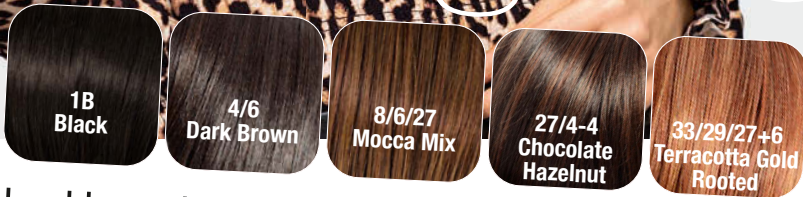
20

MH

23/14
Biscuit Blond
Balayage



next generation



135/4-2
Aubergine Balayage



10/16/27+10
Bernstein Balayage



12/14/26+12
Dark Blond Balayage



14/88+8
Champagne Balayage



22/16+14
Sandy Blond Balayage



23/14
Biscuit Blond Balayage



28/29-135+33
Hot Flame Balayage

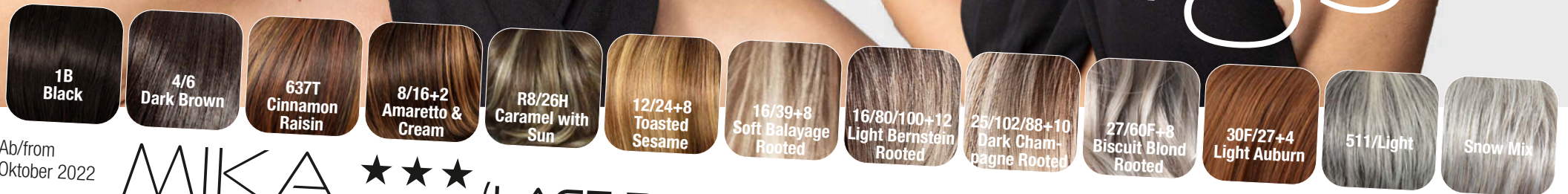
HI JILL ★★★ (LACE PART) HIGH HEAT FIBER

MH

27/60F+8
Biscuit Blond
Rooted



wigs



Ab/from
October 2022

MIKA



(LACE PART)

22

MH

16/39+8
Soft Balayage
Rooted



next generation

- 1B Black
- 4/6 Dark Brown
- 637T Cinnamon Raisin
- 8/16+2 Amaretto & Cream
- R8/26H Caramel with Sun
- 12/24+8 Toasted Sesame
- 16/39+8 Soft Balayage Rooted
- 16/80/100+12 Light Bernstein Rooted
- 25/102/88+10 Dark Champagne Rooted
- 27/60F+8 Biscuit Blond Rooted
- 30F/27+4 Light Auburn

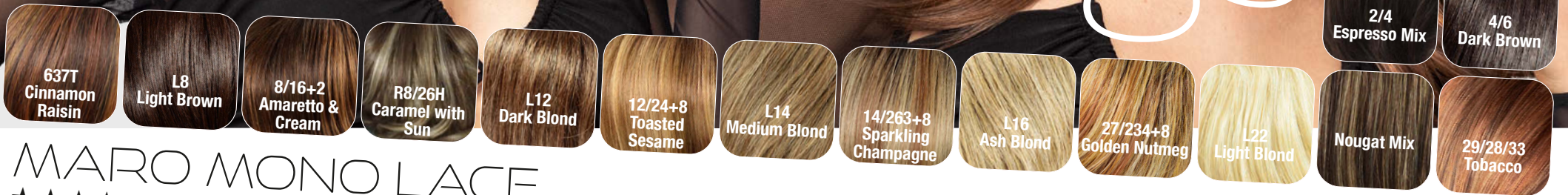
Ab/from
Oktober 2022

MORA ★★★ (LACE PART)

GM

29/28/33
Tobacco

WIGS



MARO MONO LACE

★★★★★

+LF

2/4 Espresso Mix, 4/6 Dark Brown, 637 Cinnamon Raisin, 8/16+2 Amaretto Cream, R8/26H Caramel with Sun, 12/24+8 Toasted Sesame, 14/263+8 Sparkling Champagne, 27/234+8 Golden Nutmeg, Nougat Mix, 29/28/33 Tobacco

MARO MONO LACE SMALL

★★★★★

+LF

4/6 Dark Brown, L8 Light Brown, L12 Dark Blond, L14 Medium Blond, L16 Ash Blond, L22 Light Blond, 29/28/33 Tobacco

MARO MONO LACE LARGE

★★★★★

+LF

2/4 Espresso Mix, 4/6 Dark Brown, 637T Cinnamon Raisin, 8/16+2 Amaretto Cream, R8/26H Caramel with Sun, 12/24+8 Toasted Sesame, 14/263+8 Sparkling Champagne, 29/28/33 Tobacco

24

MH

25/102/88+10
Dark Champagne
Rooted



next generation

- 1B Black
- 4/6 Dark Brown
- 637T Cinnamon Raisin
- 8/16+2 Amaretto & Cream
- R8/26H Caramel with Sun
- 12/24+8 Toasted Sesame
- 16/39+8 Soft Balayage Rooted
- 16/80/100+12 Light Bernstein Rooted
- 25/102/88+10 Dark Champagne Rooted
- 27/60F+8 Biscuit Blond Rooted
- 30F/27+4 Light Auburn

Ab/from
Oktober 2022

NIABI ★★★ (LACE PART)

MH

16/80/100+12
Light Bernstein
Rooted



WIGS

- 1B Black
- 4/6 Dark Brown
- 637T Cinnamon Raisin
- 8/16+2 Amaretto & Cream
- R8/26H Caramel with Sun
- 12/24+8 Toasted Sesame
- 16/39+8 Soft Balayage Rooted
- 16/80/100+12 Light Bernstein Rooted
- 25/102/88+10 Dark Champagne Rooted
- 27/60F+8 Biscuit Blond Rooted
- 30F/27+4 Light Auburn

Ab/from
Oktober 2022

NUBA MONO LACE ★★★★★ +LF

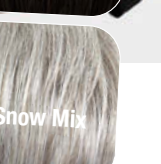
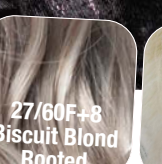
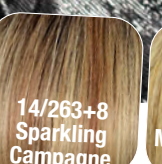
26

GM

27/60F+8
Biscuit Blond
Rooted



next generation



ISA MONO LACE ★★★★★ +LF

MH

10MS



WIGS



MARCELLO LACE PART ★★★ UNISEX

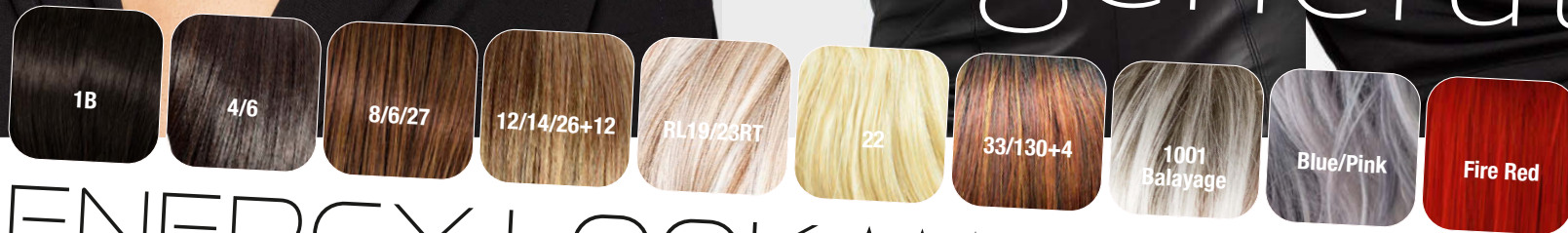
28

MH

Blue/Pink



next generation



ENERGY LOOK ★★★ +SLF HIGH HEAT FIBER

MH

Fire Red



Blue/Violet



WIGS



ENERGY CLUB ★★★

HIGH HEAT FIBER

30

GM

TT4/12B/601T
Sand Mix Rooted



next generation



2/4
Espresso Mix



4/6
Dark Brown



4/27
Hazelnut Mix



R14/16T
Toasted
Sesame



TTL14/88+8
Champagne
Rooted



TT613+6
Platinum
Rooted



TT4/12B/601T
Sand Mix
Rooted

Ab/from
November 2022

JULE ★★★★★ +LF

MH

14/88+8
Champagne Balayage

HI
COLLECTION
100%
HIGH
HEAT
FIBER
BALAYAGE
COLORS -
NEW



- 1B Black
- 4/6 Dark Brown
- 27/4-4 Chocolate Hazelnut
- 22/25+10 Honey Blond Rooted
- 135/4-2 Aubergine Balayage
- 10/16/27+10 Bernstein Balayage
- 12/14/26+12 Dark Blond Balayage
- 14/88+8 Champagne Balayage
- 23/14+6 Pearl Blond Balayage
- 23/14 Biscuit Blond Balayage
- 28/29-135+33 Hot Flame Balayage

HI BESO ★★★+LF

32

MH

14/88+8
Champagne
Balayage



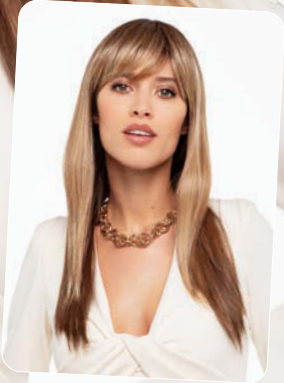
HI
COLLECTION
100%
HIGH
HEAT
FIBER
BALAYAGE
COLORS -
NEW



HI UNO ★★★ +LF

MH

10/16/27+10
Bernstein
Balayage



HI CLUB ★★★+LF

MH

23/14
Biscuit Blond
Balayage

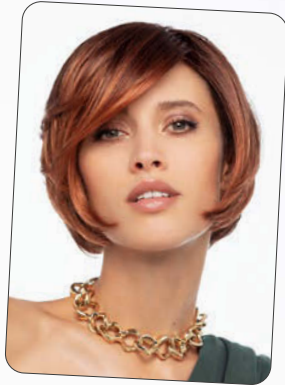


HI PAULINE ★★★+LF
HI PAULINE SMALL ★★★+LF

34

MH

28/29-135+33
Hot Flame



KATE SOFT ★★★★★ +LF
KATE LACE ★★★ +LFS

1B, 27/4-4, 8/6/27, 10/16/27+10, 12/14/26+12, 1001-14+8, N22/14-14, 22/15H, 33/29/27+6, Fire Red, 305K, 61

MH

22/25+10
Honey Blond Rooted



HI LYNN ★★★ (LACE PART)

MH

28/29-135+33
Hot Flame
Balayage



HI
COLLECTION
100%
HIGH
HEAT
FIBER
BALAYAGE
COLORS -
NEW



HI CLIC ★★

GM

L22+4



DATE ★★



GM
GISELA
MAYER
HAIR COLLECTION

MH
MAYER
HAIR
HAIR COLLECTION

S **LY THE BEST!**