



HW UK Ltd

HAIRWORLD

HAIRWORLD *brochure* 2022

DREW

BASE:	Monofilament Crown
HEAD SIZE:	Average
HAIR LENGTH:	1½ - 5"
FRINGE:	2½ - 5"
CROWN:	2½ - 3½"
SIDE:	1½ - 2½"
NAPE:	1½"
WEIGHT:	62 grams

SYNTHETIC COLOURS:

6H, 8H, 12AH, 12H, 14H,
18/22H, 24H1B, 26H, 27AH,
Burnt Cinnamon, Silver Pearl
Colour shown - 27AH



LAYLA

BASE:	Monofilament Top / Lace Front
HEAD SIZE:	Average
HAIR LENGTH:	7 - 12½"
FRINGE:	7 - 10"
CROWN:	10 - 12½"
SIDE:	11 - 12½"
NAPE:	11"
WEIGHT:	121 - 126 grams

SYNTHETIC COLOURS:

Candy Blonde - (Rooted), Iced Platinum - (Rooted), Sparkling Champagne - (Rooted), Summer Wheat, Toasted Pecan - (Rooted), Vanilla Bean - (Rooted)

Colour shown - Candy Blonde - (Rooted)



CHELSEA

BASE:	Monofilament Top / Lace Front
HEAD SIZE:	Average
HAIR LENGTH:	6 $\frac{1}{2}$ " - 13 $\frac{1}{4}$ "
FRINGE:	10 - 12"
CROWN:	13 - 13 $\frac{1}{4}$ "
SIDE:	10 - 12 $\frac{1}{4}$ "
NAPE:	6 $\frac{1}{2}$ " - 7"
WEIGHT:	129 - 134 grams

SYNTHETIC COLOURS:

1BH, 4H, 8H, 12H, 26H, 27AH,

Arctic Ice, Iced Platinum - (Rooted),

Summer Wheat, Toasted Pecan (Rooted)

Colour shown - Iced Platinum (Rooted)



CARA



BASE: Monofilament Top /
Lace Front

HEAD SIZE: Average

HAIR LENGTH: 3 - 5½"

FRINGE: 3 - 4"

CROWN: 4 - 5½"

SIDE: 4 - 5½"

NAPE: 3"

WEIGHT: 62 - 64 grams



SYNTHETIC COLOURS:

1BH, 4H, BH, 12H, Frosted Mink (Rooted), Frosted Walnut (Rooted), Iced Platinum (Rooted), Silver Pearl, Sparkling Champagne (Rooted), Summer Wheat, Toasted Pecan (Rooted), Vanilla Bean (Rooted)

Colour shown - Iced Platinum (Rooted)

MILLIE

BASE:	Monofilament Top / Lace Front
HEAD SIZE:	Average
HAIR LENGTH:	4 - 8½"
FRINGE:	7"
CROWN:	8½"
SIDE:	7"
NAPE:	4"
WEIGHT:	78 grams



SYNTHETIC COLOURS:

4H, 6H, 8H, 12H, 14H, 16H, 26H, Burnt Cinnamon,
Rich Coffee Bean, Toasted Pecan (Rooted)

Colour shown - 6H

ANYA



BASE:	Monofilament Top / Lace Front
HEAD SIZE:	Average
HAIR LENGTH:	3½ - 12½"
FRINGE:	3½"
CROWN:	11½"
SIDE:	12½"
NAPE:	12½"
WEIGHT:	150 grams

SYNTHETIC COLOURS:

1H, 1BH, 4H, 6H, 8H, 12AH, 12H, 24H18, 26H,
614H, 131H, Arctic Ice, Barley, Burnt Cinnamon,
Chocolate Flame, Rich Coffee Bean,
Summer Wheat, Toasted Pecan (Rooted)

Colour shown - Summer Wheat

CHARLIE

BASE: Monofilament Top

HEAD SIZE: Average

HAIR LENGTH: 2½ - 10½"

FRINGE: 4"

CROWN: 10½"

SIDE: 8½"

NAPE: 2½"

WEIGHT: 89 grams



SYNTHETIC COLOURS:

4H, 6H, 8H, 12AH, 12H, 14H, 16H, 24H1B, 26H, 27AH, 30H, 56, 88H, Arctic Ice, Barley, Burnt Cinnamon, Butterscotch, Chocolate Flame, Rich Coffee Bean, Silver Pearl, Summer Wheat, Toasted Pecan (Rooted)

Colour shown - Toasted Pecan

FERN

BASE:	MonoFilament Top / Lace Front
HEAD SIZE:	Average
HAIR LENGTH:	2½ - 4½"
FRINGE:	4"
CROWN:	4½"
SIDE:	3½"
NAPE:	2½"
WEIGHT:	61 grams

SYNTHETIC COLOURS:

4H, 6H, 8H, 12AH, 12H, 14/24H, 16H, 26H, 27AH, 56, Arctic Ice,
Burnt Cinnamon, Frosted Mink (Rooted), Frosted Walnut (Rooted),
Iced Platinum (Rooted), Rich Coffee Bean, Silver Pearl, Summer Wheat,
Toasted Pecan (Rooted), Vanilla Bean (Rooted)

Colour shown - Arctic Ice



ROZ

BASE:	Monofilament Top / Lace Front
HEAD SIZE:	Petite
HAIR LENGTH:	3½ - 5"
FRINGE:	3½"
CROWN:	5"
SIDE:	3½"
NAPE:	3½"
WEIGHT:	63 grams



SYNTHETIC COLOURS:

4H, 6H, 8H, 12H, 14/24H, 26H, Burnt Cinnamon, Rich Coffee Bean, Silver Pearl, Toasted Pecan (Rooted)

Colour shown - Silver Pearl

KAY

BASE:	Monofilament Top
HEAD SIZE:	Petite
HAIR LENGTH:	3½ - 8½"
FRINGE:	3½"
CROWN:	8½"
SIDE:	7½"
NAPE:	5"
WEIGHT:	91 grams

SYNTHETIC COLOURS:

4H, 6H, 8H, 14/24, 24H1B, 26H,

Arctic Ice, Burnt Cinnamon,

Frosted Mink (Rooted), Frosted Walnut (Rooted),

Iced Platinum (Rooted), Rich Coffee Bean,

Summer Wheat, Toasted Pecan (Rooted),

Vanilla Bean (Rooted)

Colour shown - Vanilla Bean (Rooted)



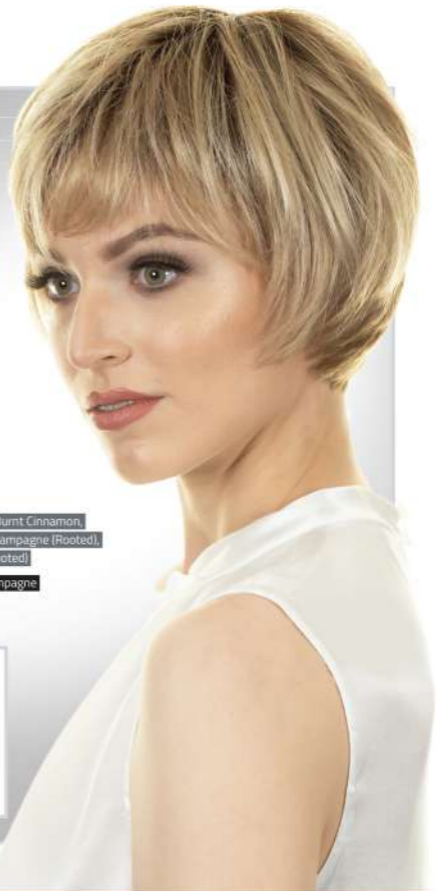
CLEO

BASE:	Monofilament Top
HEAD SIZE:	Petite
HAIR LENGTH:	1½" - 6¼"
FRINGE:	3¾"
CROWN:	6¼"
SIDE:	5"
NAPE:	1½"
WEIGHT:	65 grams

SYNTHETIC COLOURS:

4H, 8H, 12H, 14H, 16H, 26H, Burnt Cinnamon,
Rich Coffee Bean, Sparkling Champagne (Rooted),
Silver Pearl, Toasted Pecan (Rooted)

Colour shown - Sparkling Champagne



KEELEY

BASE:	Wefted Lace Front
HEAD SIZE:	Average
HAIR LENGTH:	2¼ - 8½"
FRINGE:	3½ - 5"
CROWN:	4¼ - 8½"
SIDE:	6 - 7"
NAPE:	2½"
WEIGHT:	76 grams

SYNTHETIC COLOURS:

4H, 8H, 12AH, 12H, 14H, 16H, 26H,

Rich Coffee Bean, Silver Pearl,

Toasted Pecan (Rooted)

Colour shown - Rich Coffee Bean



SHONA

BASE:	Monofilament Top / Lace Front
HEAD SIZE:	Average
HAIR LENGTH:	2 - 5½"
FRINGE:	3½"
CROWN:	5½"
SIDE:	3"
NAPE:	2"
WEIGHT:	64 grams

SYNTHETIC COLOURS:

4H, 6H, BH, 12AH, 12H,

14/24H, 18/22H, 24H18,

26H, 27AH, 30H, 56,

Burnt Cinnamon, Silver Pearl,

Toasted Pecan (Rooted)

Colour shown - 30H



MACIE

BASE: Monofilament Parting

HEAD SIZE: Petite

HAIR LENGTH: 3 $\frac{1}{2}$ " - 10 $\frac{1}{2}$ "

FRINGE: 3 $\frac{1}{2}$ "

CROWN: 10 $\frac{1}{2}$ "

SIDE: 9"

NAPE: 4"

WEIGHT: 106 grams



SYNTHETIC COLOURS:

4H, 6H, 8H, 12AH, 12H, 14H, 16H, 24H18, 26H, 27AH, 88H, Arctic Ice, Barley, Burnt Cinnamon, Butterscotch, Chocolate Flame, Rich Coffee Bean, Summer Wheat, Toasted Pecan (Rooted)

Colour shown - 27AH

BROOKE

BASE: Monofilament Top

HEAD SIZE: Average

HAIR LENGTH: 3½ - 5½"

FRINGE: 3½"

CROWN: 5½"

SIDE: 5½"

NAPE: 4"

WEIGHT: 56 grams



SYNTHETIC COLOURS:

4H, 8H, 12AH, 12H, 14/24, 16H, 614H,

Barley, Burnt Cinnamon, Butterscotch,

Chocolate Flame, Toasted Pecan (Rooted)

Colour shown - Burnt Cinnamon

PERRIE

BASE:	Monofilament Parting / Lace Front
HEAD SIZE:	Average
HAIR LENGTH:	3 - 6½"
FRINGE:	4½ - 5½"
CROWN:	3½ - 6½"
SIDE:	3 - 5½"
NAPE:	3"
WEIGHT:	75 - 77 grams

SYNTHETIC COLOURS:

BH, 12H, Arctic Ice, Frosted Mink (Rooted),
Frosted Walnut (Rooted), Iced Platinum (Rooted),
Sparkling Champagne (Rooted), Summer Wheat,
Toasted Pecan (Rooted), Vanilla Bean (Rooted)

Colour shown - Vanilla Bean

TORI

BASE:	Wefted Lace Front
HEAD SIZE:	Average
HAIR LENGTH:	1½ - 5½"
FRINGE:	3 - 5½"
CROWN:	4"
SIDE:	1½ - 2½"
NAPE:	1½ - 2½"
WEIGHT:	68 grams

SYNTHETIC COLOURS:

4H, 12H, 14H, 16H, 26H, 27AH, 60H,

Burnt Cinnamon, Rich Coffee Bean,

Toasted Pecan (Rooted)

Colour shown - Rich Coffee Bean



ELLA

BASE:	Wetted
HEAD SIZE:	Average
HAIR LENGTH:	2½ - 3½"
FRINGE:	2½"
CROWN:	3½"
SIDE:	2½"
NAPE:	2½"
WEIGHT:	56 grams

Synthetic Colours:

4H, 6H, 8H, 12AH, 12H, 14/24H,
18/22H, 24H18, 26H, 27AH, 38H,
56, 60H, 88H

Colour shown - 88H

ASHLEY

BASE:	Double Layer Monofilament Top / Lace Front
HEAD SIZE:	Average
HAIR LENGTH:	2½ - 3½"
FRINGE:	2½"
CROWN:	3½"
SIDE:	2½"
NAPE:	2½"
WEIGHT:	52 grams

SYNTHETIC COLOURS:

4H, 12H, 14/24H, 16H, 18/22H, 24H1B, 27AH, 3BH,
54, 56, 8BH, Barley, Burnt Cinnamon, Rich Coffee Bean,
Silver Pearl, Toasted Pecan (Rooted)

Colour shown - Toasted Pecan



FAITH

SYNTHETIC COLOURS:

4H, 6H, 8H, 12H, 14H,

16H, 24H18, 27AH, 131H,

614H, Barley, Burnt Cinnamon,

Toasted Pecan (Rooted)

Colour shown - 6H



BASE: Monofilament Parting

HEAD SIZE: Average

HAIR LENGTH: 3½" - 11"

FRINGE: 3½"

CROWN: 9½"

SIDE: 11"

NAPE: 11"

WEIGHT: 135 grams

ALEX

BASE:	Monofilament Top
HEAD SIZE:	Average
HAIR LENGTH:	2 - 3½"
FRINGE:	3"
CROWN:	3¼"
SIDE:	3¼"
NAPE:	2"
WEIGHT:	55 grams



SYNTHETIC COLOURS:

4R, 8R, 8/26R, 8/27R, 12R, 12/26R, 16/22R,
18/22, 24R, 38R, 51, 54, 56, 60, 60R, 88R

Colour shown - 60

PIPPA

BASE:	Monofilament Top / Lace Front
HEAD SIZE:	Average
HAIR LENGTH:	4 1/2 - 8 1/2"
FRINGE:	6 - 7 1/2"
CROWN:	8 1/2"
SIDE:	7 1/2"
NAPE:	5"
WEIGHT:	96 grams

SYNTHETIC COLOURS:

4H, 6H, 8H, 12AH, 12H,
14H, 16H, 24H18, 26H,
27AH, 30H, 88H, Burnt Cinnamon,
Rich Coffee Bean,
Toasted Pecan (Rooted)
Colour shown - 12AH



TALLIAH

BASE:	Monofilament Parting
HEAD SIZE:	Average
HAIR LENGTH:	1½ - 6"
FRINGE:	3 - 4"
CROWN:	3½ - 6"
SIDE:	4 - 5"
NAPE:	1½"
WEIGHT:	71 grams



SYNTHETIC COLOURS:

4H, 8H, 12AH, 12H, 14/24H, 26H, 27AH, Burnt Cinnamon, Rich Coffee Bean, Toasted Pecan (Rooted)

Colour shown - Burnt Cinnamon

WILLOW

BASE:	Monofilament Top / Lace Front
HEAD SIZE:	Average
HAIR LENGTH:	5 - 11"
FRINGE:	7"
CROWN:	11"
SIDE:	10"
NAPE:	8"
WEIGHT:	104 grams



SYNTHETIC COLOURS:

4H, 6H, 8H, 12AH, 12H, 14H, 24H18, 26H, 27AH,

Arctic Ice, Burnt Cinnamon, Frosted Mink (Rooted),

Frosted Walnut (Rooted), Iced Platinum (Rooted),

Rich Coffee Bean, Toasted Pecan (Rooted), Vanilla Bean (Rooted)

Main Image Colour - 27AH | Secondary Image Colours - 12H



ANNABEL

BASE:	Monofilament Parting
HEAD SIZE:	Average
HAIR LENGTH:	4 - 9"
FRINGE:	4"
CROWN:	9"
SIDE:	7½"
NAPE:	6½"
WEIGHT:	64 grams

SYNTHETIC COLOURS:

4H, 12H, 88H, Barley, Burnt Cinnamon,

Chocolate Flame, Rich Coffee Bean,

Toasted Pecan (Rooted)

Colour shown - Chocolate Flame



KRIS

BASE:	Double Layer Monofilament Top / Lace Front
HEAD SIZE:	Petite
HAIR LENGTH:	2½ - 3¼"
FRINGE:	2½"
CROWN:	3¼"
SIDE:	2½"
NAPE:	2½"
WEIGHT:	52 grams



SYNTHETIC COLOURS:

4H, 12H, 14/24H, 16H, 18/22H, 24H18, 27AH, 38H, 54, 56, 88H,
Arctic Ice, Barley, Burnt Cinnamon, Rich Coffee Bean, Silver Pearl,
Toasted Pecan (Rooted)

Colour shown - 12H

SCARLETT

BASE:	Monofilament Parting / Lace Front
HEAD SIZE:	Average
HAIR LENGTH:	3½ - 7"
FRINGE:	4 - 7"
CROWN:	4 - 7"
SIDE:	3½ - 5½"
NAPE:	4½"
WEIGHT:	76 grams



SYNTHETIC COLOURS:

4H, 8H, 12AH, 12H, 14H, 26H, 27AH, Burnt Cinnamon,

Frosted Mink (Rooted), Frosted Walnut (Rooted), Iced Platinum (Rooted),

Rich Coffee Bean, Toasted Pecan (Rooted), Vanilla Bean (Rooted)

Colour shown - Toasted Pecan

ZARA

BASE:	Monofilament Top
HEAD SIZE:	Petite
HAIR LENGTH:	2½ - 3½"
FRINGE:	2½"
CROWN:	3½"
SIDE:	3"
NAPE:	2½"
WEIGHT:	53 grams



SYNTHETIC COLOURS:

BR, 8/14R, 8/26R, 8/27R, 16/22R, 18/22, 24R, 38R, 48T, 51, 54, 56, 60R, 88R

Colour shown - 51

FRANKIE

BASE:	Monofilament Top
HEAD SIZE:	Average
HAIR LENGTH:	3 - 3½"
FRINGE:	3"
CROWN:	4"
SIDE:	3½"
NAPE:	3½"
WEIGHT:	63 grams

SYNTHETIC COLOURS:

B/26R, 12R, 12/30BT, 12/26R,

16/22R, 26R, 38R, 54, 56, 60R

Colour shown - 12/30BT



EVE

BASE: Wefted

HEAD SIZE: Average

HAIR LENGTH: 2 - 3"

FRINGE: 3"

CROWN: 3"

SIDE: 3"

NAPE: 2"

WEIGHT: 63 grams

SYNTHETIC COLOURS:

8/27R, 12/26R, 17/101, 18/22, 24R,

38, 38R, 54, 56, 60R, 88R, 101, 102

Colour shown - 24R

ABBIE

BASE:	Wefted
HEAD SIZE:	Petite
HAIR LENGTH:	1½ - 3½"
FRINGE:	3½"
CROWN:	3½"
SIDE:	3½"
NAPE:	1½"
WEIGHT:	55 grams



SYNTHETIC COLOURS:

8/26R, 12/26R, 14, 14/24, 16/22R, 17/101,

18/22, 22R, 34, 39R, 51, 54, 56, 60, 88R

Colour shown - 12/26R

JAMIE

BASE:	Wifted
HEAD SIZE:	Average
HAIR LENGTH:	2½ - 3½"
FRINGE:	2½"
CROWN:	3½"
SIDE:	3½"
NAPE:	2½"
WEIGHT:	50 grams

SYNTHETIC COLOURS:

B/14R, 8/27R, 12/26R, 16/22R,
18/22, 24R, 38R, 56, 60, 60R, 88R

Colour shown - 16/22R

EMILY

BASE:	Wifted
HEAD SIZE:	Petite
HAIR LENGTH:	2½ - 3"
FRINGE:	2¼"
CROWN:	3"
SIDE:	3"
NAPE:	3"
WEIGHT:	64 grams

SYNTHETIC COLOURS:

10, 12, 14/24H, 16, 17/101, 18/22H,
38, 39, 48, 51, 54, 56, 60/56, 60, 101

Colour shown - 14/24H

TONI

100% REMY HUMAN HAIR

BASE:	Fully Hand Tied Lace Front
HEAD SIZE:	Petite
HAIR LENGTH:	2" - 3 1/2"
WEIGHT:	66 grams

100% HUMAN HAIR COLOURS:

Burnt Cinnamon, Caramel Blonde,
Ebony, Frosted Walnut

Colour shown - Burnt Cinnamon



SIENNA

100% REMY HUMAN HAIR

BASE: Monofilament Top

HEAD SIZE: Small / Average

HAIR LENGTH: 16"

WEIGHT: 205 grams

100% HUMAN
HAIR COLOURS:

2H, 3H, 4H, 5H, 7H,

9H, 20H, 7H Ombre

Colour shown -

7H Ombre



SKYE

100% REMY HUMAN HAIR



BASE: Monofilament Top

HEAD SIZE: Average

HAIR LENGTH: 7 - 10 1/2"

WEIGHT: 117 grams

100% HUMAN HAIR COLOURS:

2H, 3H, 4H, 5H, 7H, 9H

Colour shown - 3H

SYNTHETIC FRINGES

These easily attached fringes are the ideal accessory for turbans and scarves.

They provide an added dimension to your headwear by creating a natural hair appearance. They are attached with Velcro and are available in a wide range of colours.

The fringe is approximately 4" long and can be trimmed if required to the desired length.

SYNTHETIC FRINGE COLOURS:



HEADWEAR AND SYNTHETIC FRINGES
SOLD SEPARATELY

ACCESSORIES

STYLING BRUSH

Silicone tips to prevent damage to the fibres.

Length: 16cm

Order Code: AC0500



POLY PATCH

Polyurethane foundation patch use on wigs for use of double sided tape.

Order Code: AC0172



SYNTHETIC WIG CARE PACK

- 1 x REFRESH shampoo
- 1 x REVIVE conditioning spray
- 1 x CONTROL shape spray
- 1 x Medi caps in twin pack (beige)
- 1 x Styling brush
- 1 x Collapsible wig stand

250ml

250ml

250ml

Order Code: AC0031



COLLAPSIBLE DRYING STAND

Allows natural drying of your wig and its base material without stretching. Extra strong rigid frame with a unique top grip section that holds the wig, preventing slipping while allowing natural drying of synthetic wigs. Extra tall height for longer styles and folds flat in seconds for easy transport and storage.

Height: 36cm

Order Code: AC0237



WIG TAPE

Medical quality daily wear wig tape.

Order Code: ACT25 - 25mm x 25mt

Order Code: ACT5 - 25mm x 5mt



POLYSTYRENE STYLING HEAD

Used for dressing out and styling wigs.

Height: 28cm

Order Code: AC0232



MEDI CAP

Increases wig comfort, security and hygiene. Made from 100% polyester.

Order Code: AC022BE - Beige (Twin pack)

Order Code: AC022BL - Black (Single cap)



UV SHINE SPRAY

Help protect against harmful UV damage when sprayed sparingly and also add luster and shine.

Volume: 100ml

Order Code: WG/SH

BAMBOO WIG LINER

Our Bamboo wig liner provides a soft comfortable feel between the wig base and your scalp and because it is 95% bamboo it will help alleviate skin irritation, keeping your scalp cool and dry.

Made from: 95% Bamboo and 5% Lycra.

Colour: Beige

Order Code: AC022BA

SYNTHETIC COLOURS:



1H



18H



4R



4H



6H



8R



8H



8/14R



8/26R



8/27R



10



12



12R



12H



12AH



12/30BT



12/26R



14



14/24



14H



14/24H



16



16H



16/22R



17/101



18/22



18/22H



24R



24H18



26R



26H



88R



88H



614H



101



102



27AH



30H



130H



131H



34



38



38R



38H



39



48



48T



51



54



56



60/56



60R



60H



60



Arctic Ice



Barley



Burnt
Cinnamon



Butterscotch



Chocolate
Flame



Rich Coffee
Bean



Silver Pearl



Summer
Wheat

GRADUATED ROOT COLOURS:



Candy Blonde



Frosted Mink



Frosted
Walnut



Iced Platinum



Sparkling
Champagne



Toasted Pecan



Vanilla Bean

HUMAN HAIR COLOURS:



2H



3H



4H



5H



7H



7H Ombre



9H



20H



Burnt
Cinnamon



Caramel
Blonde



Ebony



Frosted
Walnut



DREW
PAGE 2



LAYLA
PAGE 3



CHELSEA
PAGE 4



CARA
PAGE 5



MILLIE
PAGE 6



ANYA
PAGE 7



CHARLIE
PAGE 8



FERN
PAGE 9



ROZ
PAGE 10



KAY
PAGE 11



CLEO
PAGE 12



KEELEY
PAGE 13



SHONA
PAGE 14



MACIE
PAGE 15



BROOKE
PAGE 16



PERRIE
PAGE 17



TORI
PAGE 18



ELLA
PAGE 19



ASHLEY
PAGE 20



FAITH
PAGE 21



ALEX
PAGE 22



PIPPA
PAGE 23



TALLIAH
PAGE 24



WILLOW
PAGE 25



ANNABEL
PAGE 26



KRIS
PAGE 27



SCARLETT
PAGE 28



ZARA
PAGE 29



FRANKIE
PAGE 30



EVE
PAGE 31



ABBIE
PAGE 32



JAMIE
PAGE 33



EMILY
PAGE 34



TONI
PAGE 35



SIENNA
PAGE 36



SKYE
PAGE 37



HW
UK Ltd

HAIRWORLD

HAIRWORLD *London* 2022