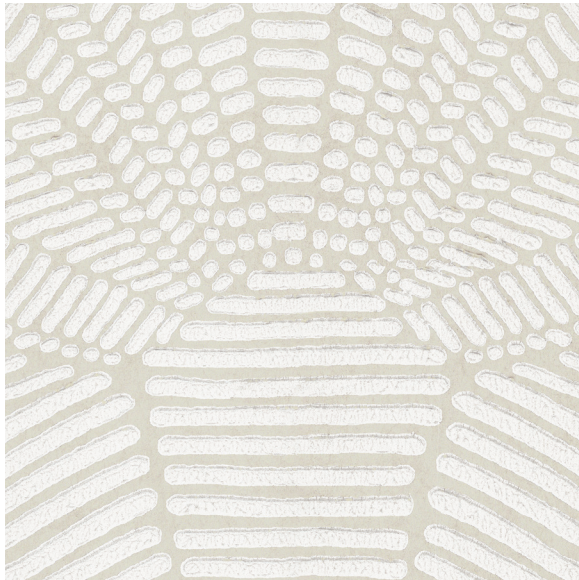




CARLISLE & CO.™

WALLCOVERINGS

— EST. 1998 —



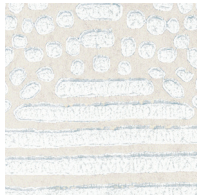
HANDCRAFTED

SOLEIL

LX1912 OATMEAL

WIDTH:	27" (68,58 cm) Trimmed
REPEAT:	25¼" (64,13 cm)
BACKING:	Non-Woven
FLAME RATING:	ASTM E84 Class A
BOLT SIZE:	9 yd (8,23 m)
MATCH:	Straight
MINIMUM ORDER:	9 yd (8,23 m)
MAINTENANCE:	Washable

MORE COLORS



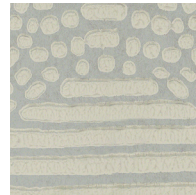
LX1910  
Sandstone



LX1911  
Platinum



LX1912  
Oatmeal



LX1913  
Dove

TO THE TRADE

US MARKETS

Exclusively through HOLLY HUNT

[hollyhunt.com](http://hollyhunt.com)

INTERNATIONAL MARKETS

800.220.6730

[carlisleco.com](http://carlisleco.com)