



CARLISLE & CO.™

WALLCOVERINGS

— EST. 1998 —



HIGH PERFORMANCE TEXTILES
SOLANA SILK

LX1906 CINNAMON

- WIDTH:** 60" (152,4 cm) Untrimmed
Trims to 55" (139,7 cm)
- REPEAT:** Random
- BACKING:** Acrylic
- FLAME RATING:** ASTM E84 Class A
- CONTENT:** 46% Olefin, 11% Polyester,
43% Post-Consumer
Recycled Polyester
- MATCH:** Non-Reversible
- MAINTENANCE:** Washable/Scrubable

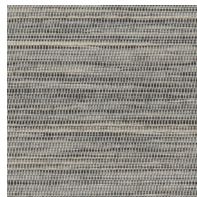
MORE COLORS



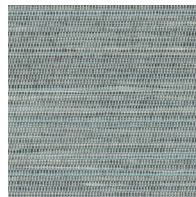
LX1900
Oatmeal



LX1901
Pebble



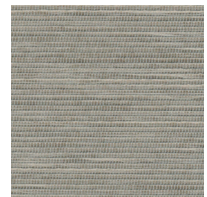
LX1902
Dove



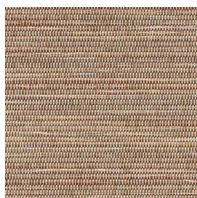
LX1903
Sky



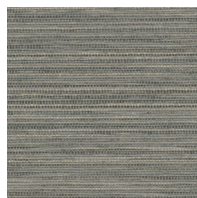
LX1904
Sandstone



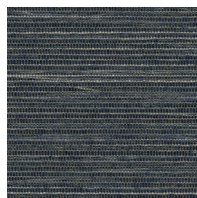
LX1905
Taupe



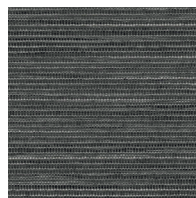
LX1906
Cinnamon



LX1907
Anchor



LX1908
Twilight



LX1909
Onyx

TO THE TRADE

US MARKETS

Exclusively through HOLLY HUNT

hollyhunt.com

INTERNATIONAL MARKETS

800.220.6730

carlisleco.com