



CARLISLE & CO.™

WALLCOVERINGS

— EST. 1998 —



HIGH PERFORMANCE TEXTILES

SOLANA SILK

LX1900 OATMEAL

- WIDTH:** 60" (152,4 cm) Untrimmed  
Trims to 55" (139,7 cm)
- REPEAT:** Random
- BACKING:** Acrylic
- FLAME RATING:** ASTM E84 Class A
- CONTENT:** 46% Olefin, 11% Polyester,  
43% Post-Consumer Recycled Polyester
- MATCH:** Non-Reversible
- MAINTENANCE:** Washable/Scrubable

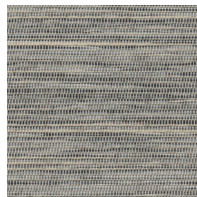
MORE COLORS



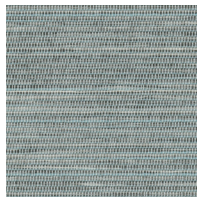
LX1900  
Oatmeal



LX1901  
Pebble



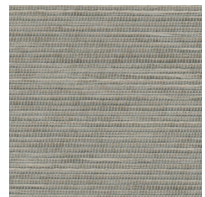
LX1902  
Dove



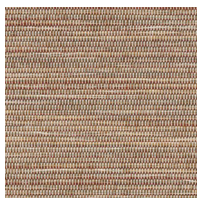
LX1903  
Sky



LX1904  
Sandstone



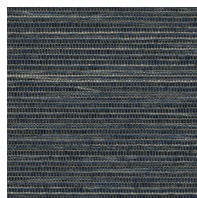
LX1905  
Taupe



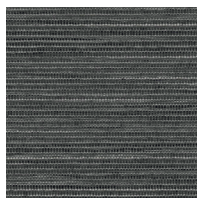
LX1906  
Cinnamon



LX1907  
Anchor



LX1908  
Twilight



LX1909  
Onyx

TO THE TRADE

US MARKETS

Exclusively through HOLLY HUNT

hollyhunt.com

INTERNATIONAL MARKETS

800.220.6730

carlisleco.com