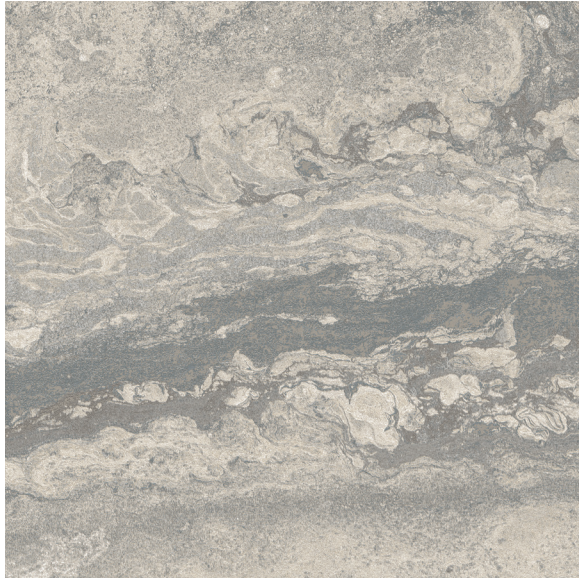




CARLISLE & CO.[®]

WALLCOVERINGS

— EST. 1998 —



HIGH PERFORMANCE VINYL
MINERAL RADIANCE VINYL

LX1879 DOVE

INSTALLED MURAL SIZE: 101" Wide x 134.4" High
(256,54 cm x 341,38 cm)

Trims to your wall height. For heights above 11' and full space wall wraps, this mural is designed in vertical and horizontal endless repeats.

PANEL WIDTH: 52" (132,08 cm) Untrimmed
Trims to 50½" (128,27 cm)

REPEAT: 134¾" (341,38 cm)

BACKING: Non-Woven

FLAME RATING: ASTM E84 Class A

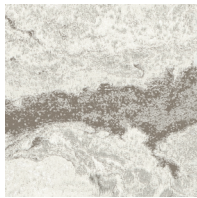
WEIGHT: 20 oz. Type II Mylar

MATCH: Straight

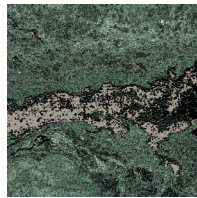
MINIMUM ORDER: 1 Mural (2 panels)

MAINTENANCE: Scrubbable/Washable

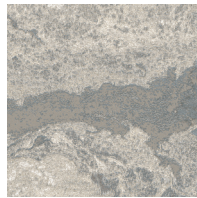
MORE COLORS



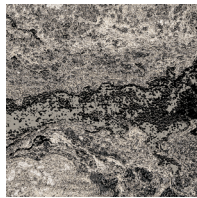
LX1877
Taupe



LX1878
Emerald



LX1879
Dove



LX1880
Charcoal

TO THE TRADE

US MARKETS

Exclusively through Holly Hunt

hollyhunt.com

INTERNATIONAL MARKETS

800.220.6730

carlisleco.com