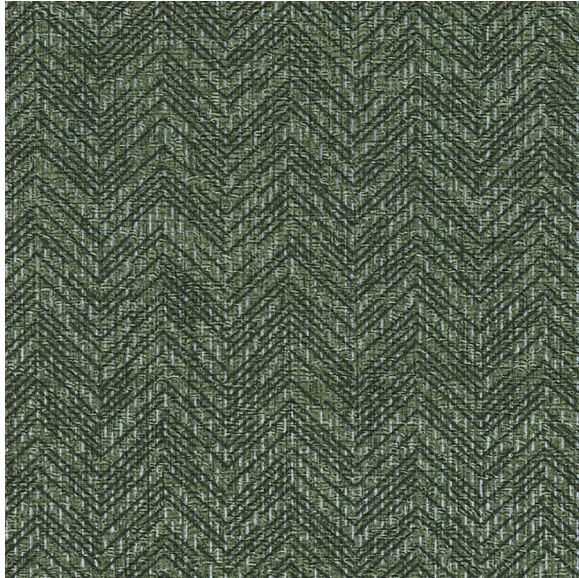




CARLISLE & CO.[®]

WALLCOVERINGS

— EST. 1998 —



HIGH PERFORMANCE VINYL

HABERDASHERY 

LX1860 FOREST

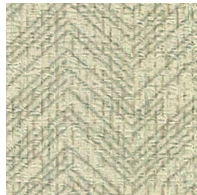
- WIDTH:** 55½" (140,9 cm) Untrimmed
Trims to 54" (137,1 cm)
- REPEAT:** Random
- BACKING:** Non-Woven
- FLAME RATING:** ASTM E84 Class A
- WEIGHT:** 20oz. Type II Vinyl
- MATCH:** Non-Reversible
- MAINTENANCE:** Scrubbable/Washable

 Advanced antimicrobial technology made with EPA-registered ingredients.

MORE COLORS



LX1855
Sandstone



LX1856
Wicker



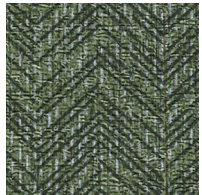
LX1857
Dove



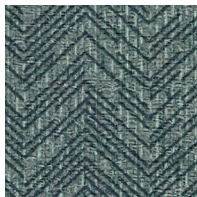
LX1858
Oyster



LX1859
Stone



LX1860
Forest



LX1861
Twilight



LX1862
Anchor

TO THE TRADE

US MARKETS

Exclusively through Holly Hunt

hollyhunt.com

INTERNATIONAL MARKETS

800.220.6730

carlisleco.com