



CARLISLE & CO.

WALLCOVERINGS

— EST. 1998 —



HIGH PERFORMANCE TEXTILES

VERTEX

LX1841 ASH

WIDTH:	57" (144,78 cm) Untrimmed Trims to 54" (137,1 cm)
REPEAT:	Random
BACKING:	Non-Woven
FLAME RATING:	ASTM E84 Class A
CONTENT:	35% Polyethylene/35% Linen/30% Polyester
MATCH:	Non-Reversible
MINIMUM ORDER:	15 yd (13,7 m)
ORDER INCREMENT:	5 yd (4,5 m)
MAINTENANCE:	Washable

MORE COLORS



LX1835
Pebble



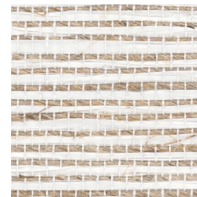
LX1836
Oatmeal



LX1837
Taupe



LX1838
Dove



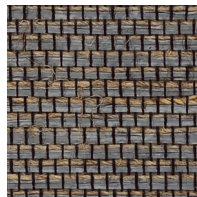
LX1839
Porcelain



LX1840
Oyster



LX1841
Ash



LX1842
Anchor

TO THE TRADE

US MARKETS

Exclusively through Holly Hunt

hollyhunt.com

INTERNATIONAL MARKETS

800.220.6730

carlisleco.com