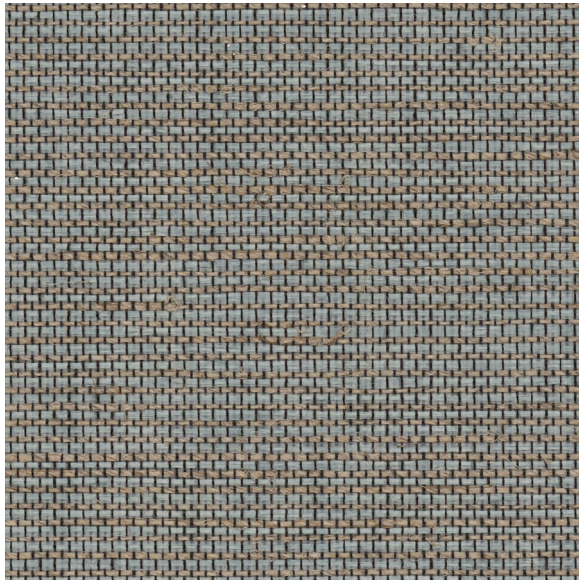




CARLISLE & CO.

WALLCOVERINGS

— EST. 1998 —



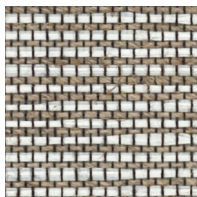
HIGH PERFORMANCE TEXTILES

AXIS

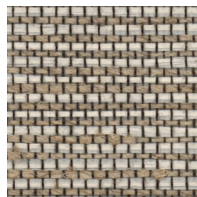
LX1831 FOG

WIDTH:	57" (144,78 cm) Untrimmed Trims to 54" (137,1 cm)
REPEAT:	Random
BACKING:	Non-Woven
FLAME RATING:	ASTM E84 Class A
CONTENT:	35% Polyethylene/35% Linen/30% Polyester
MATCH:	Non-Reversible
MINIMUM ORDER:	15 yd (13,7 m)
ORDER INCREMENT:	5 yd (4,5 m)
MAINTENANCE:	Washable

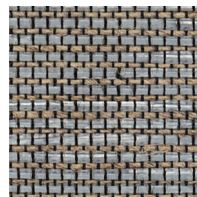
MORE COLORS



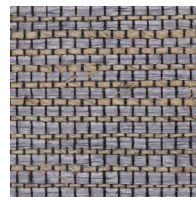
LX1825
Porcelain



LX1826
Pebble



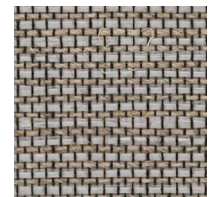
LX1827
Dove



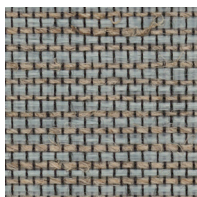
LX1828
Amethyst



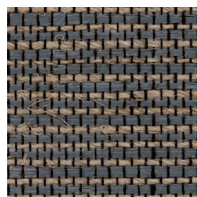
LX1829
Oatmeal



LX1830
Taupe



LX1831
Fog



LX1832
Anchor

TO THE TRADE

US MARKETS

Exclusively through Holly Hunt

hollyhunt.com

INTERNATIONAL MARKETS

800.220.6730

carlisleco.com