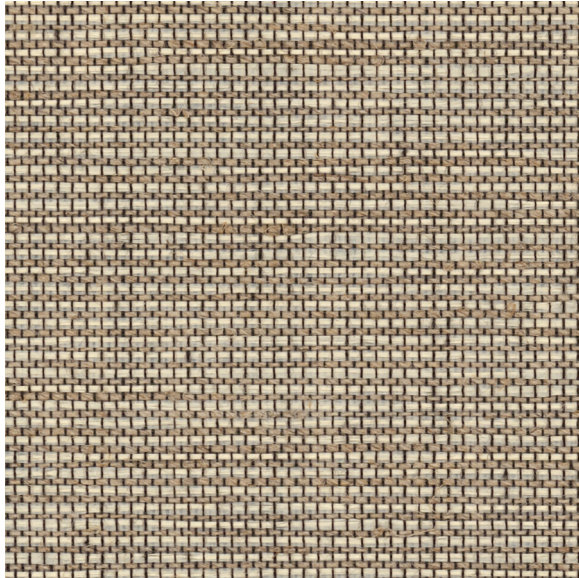




CARLISLE & CO.<sup>®</sup>

WALLCOVERINGS

— EST. 1998 —



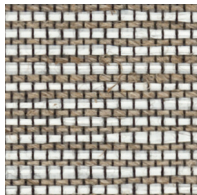
HIGH PERFORMANCE TEXTILES

AXIS

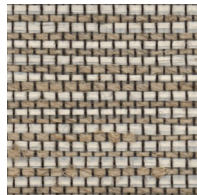
LX1829 OATMEAL

WIDTH:	57" (144,78 cm) Untrimmed Trims to 54" (137,1 cm)
REPEAT:	Random
BACKING:	Non-Woven
FLAME RATING:	ASTM E84 Class A
CONTENT:	35% Polyethylene/35% Linen/30% Polyester
MATCH:	Non-Reversible
MINIMUM ORDER:	15 yd (13,7 m)
ORDER INCREMENT:	5 yd (4,5 m)
MAINTENANCE:	Washable

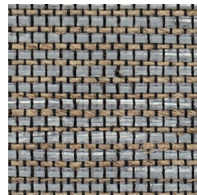
MORE COLORS



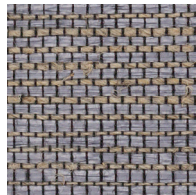
LX1825  
Porcelain



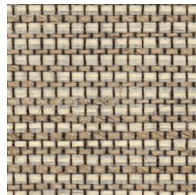
LX1826  
Pebble



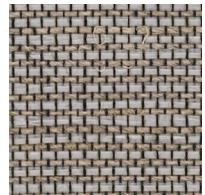
LX1827  
Dove



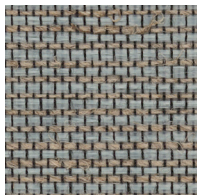
LX1828  
Amethyst



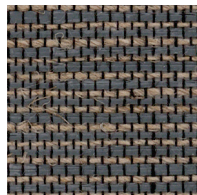
LX1829  
Oatmeal



LX1830  
Taupe



LX1831  
Fog



LX1832  
Anchor

TO THE TRADE

US MARKETS

Exclusively through Holly Hunt

[hollyhunt.com](http://hollyhunt.com)

INTERNATIONAL MARKETS

800.220.6730

[carlisleco.com](http://carlisleco.com)