



# CARLISLE & CO.

WALLCOVERINGS

— EST. 1998 —



## NATURALS

# BOTANICA BREEZE SISAL

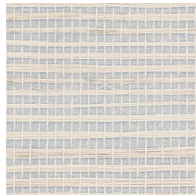
## LX1796 ONYX

WIDTH:	36" (91,4 cm) Trimmed
REPEAT:	None
BACKING:	Paper
FLAME RATING:	ASTM E84 Class A
BOLT SIZE:	8 yd (7,32 m)
MATCH:	Random
MINIMUM ORDER:	8 yd (7,32 m)
MAINTENANCE:	Soft Dry Brush

## MORE COLORS



LX1785  
Platinum



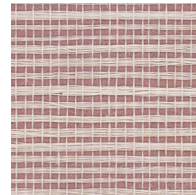
LX1786  
Soft Silver



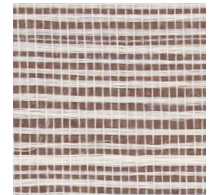
LX1787  
Taupe



LX1788  
Dove



LX1789  
Cinnamon



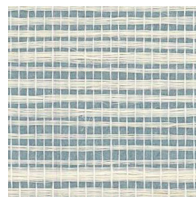
LX1790  
Brick



LX1791  
Ash



LX1792  
Stone



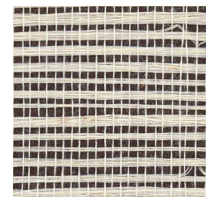
LX1793  
Aquamarine



LX1794  
Heather



LX1795  
Twilight



LX1796  
Onyx

## TO THE TRADE

### US MARKETS

Exclusively through Holly Hunt

[hollyhunt.com](http://hollyhunt.com)

### INTERNATIONAL MARKETS

800.220.6730

[carlisleco.com](http://carlisleco.com)