



# CARLISLE & CO.

WALLCOVERINGS

— EST. 1998 —



## NATURALS

# BOTANICA BREEZE SISAL

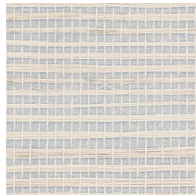
## LX1787 TAUPE

|                |                       |
|----------------|-----------------------|
| WIDTH:         | 36" (91,4 cm) Trimmed |
| REPEAT:        | None                  |
| BACKING:       | Paper                 |
| FLAME RATING:  | ASTM E84 Class A      |
| BOLT SIZE:     | 8 yd (7,32 m)         |
| MATCH:         | Random                |
| MINIMUM ORDER: | 8 yd (7,32 m)         |
| MAINTENANCE:   | Soft Dry Brush        |

## MORE COLORS



LX1785  
Platinum



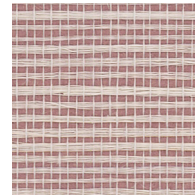
LX1786  
Soft Silver



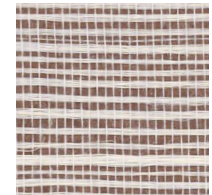
LX1787  
Taupe



LX1788  
Dove



LX1789  
Cinnamon



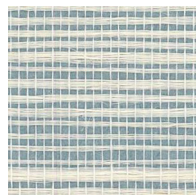
LX1790  
Brick



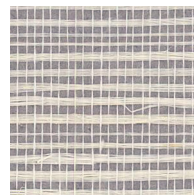
LX1791  
Ash



LX1792  
Stone



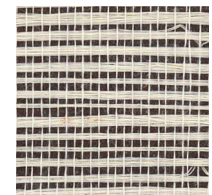
LX1793  
Aquamarine



LX1794  
Heather



LX1795  
Twilight



LX1796  
Onyx

## TO THE TRADE

### US MARKETS

Exclusively through Holly Hunt

[hollyhunt.com](http://hollyhunt.com)

### INTERNATIONAL MARKETS

800.220.6730

[carlisleco.com](http://carlisleco.com)