

TEXTILES

INFINITY

Woven by artisans, this refined textile wallcovering creates a depth of field with subtle sophistication. The enchanting color palette of earth and mineral shades provides walls with an anchoring wrap of quiet elegance.

LX1766 SANDSTONE



SPECIFICATIONS

WIDTH:	36" (91,44 cm) Trimmed
REPEAT:	None
MATCH:	Random
BACKING:	Non-Woven
COMPOSITION:	Cotton with Thread on Non-Woven Backing
FLAME RATING:	ASTM E84 Class A
MAINTENANCE:	Soft Dry Brush
BOLT SIZE:	8 yd (7,32 m)

ADDITIONAL INFORMATION

Unique hanging instructions accompany all products. Hiring a professional installer for these specialty products is recommended.

Color and texture may vary slightly due to the organic quality of the substrate material. These subtle differences should be celebrated as the mark of being hand-made.

ORDERING:

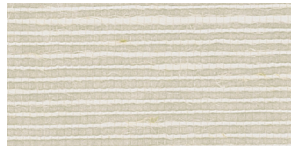
PRICING:	Priced by the linear yard.
MINIMUM ORDER:	8 yd (7,32 m)
ORDER INCREMENT:	8 yd (7,32 m)
STOCK:	USA

Memos available upon request.

MORE COLORS



LX1765 Porcelain



LX1766 Sandstone



LX1767 Fog



LX1768 Anchor



LX1769 Oatmeal



LX1770 Taupe



LX1771 Dove



LX1772 Espresso

TO THE TRADE

US MARKETS

Exclusively through Holly Hunt
hollyhunt.com

CANADA MARKETS

Crown Surface Solutions
crownsurfacesolutions.com

INTERNATIONAL MARKETS

800.220.6730
carlisleco.com