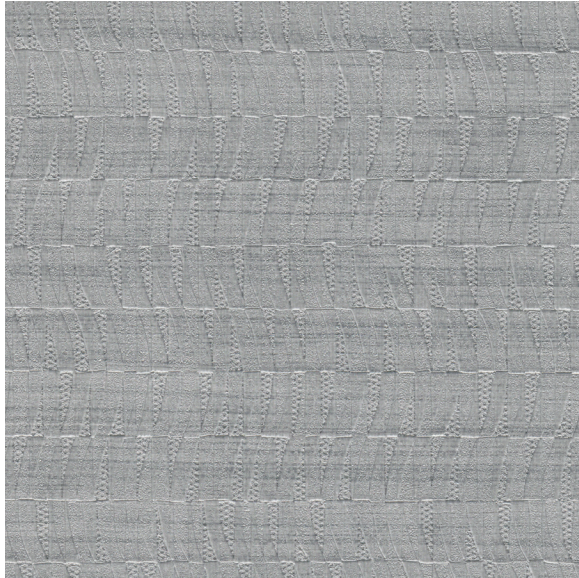




CARLISLE & CO.

WALLCOVERINGS

— EST. 1998 —



HIGH PERFORMANCE VINYL

PALISADE

LX1755 HEATHER

- WIDTH:** 54" (137,1 cm) Untrimmed
Trims to 52" (132,08 cm)
- REPEAT:** Random
- BACKING:** Osnaburg
- FLAME RATING:** ASTM E84 Class A
- WEIGHT:** 20oz. Type II Vinyl
- MATCH:** Reversible
- MAINTENANCE:** Scrubbable/Washable

 Advanced antimicrobial technology made with EPA-registered ingredients.

MORE COLORS



LX1750
Porcelain



LX1751
Champagne



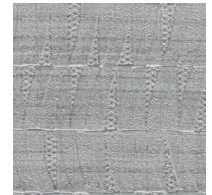
LX1752
Taupe



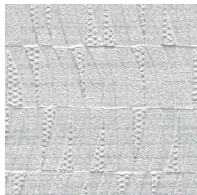
LX1753
Platinum



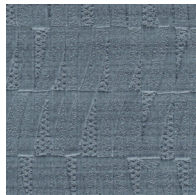
LX1754
Oyster



LX1755
Heather



LX1756
Ash



LX1757
Steel Blue

TO THE TRADE

US MARKETS

Exclusively through Holly Hunt

hollyhunt.com

INTERNATIONAL MARKETS

800.220.6730

carlisleco.com