



# CARLISLE & CO.

WALLCOVERINGS

— EST. 1998 —



HIGH PERFORMANCE VINYL

## PALISADE

### LX1754 OYSTER

<b>WIDTH:</b>	54" (137,1 cm) Untrimmed Trims to 52" (132,08 cm)
<b>REPEAT:</b>	Random
<b>BACKING:</b>	Osnaburg
<b>FLAME RATING:</b>	ASTM E84 Class A
<b>WEIGHT:</b>	20oz. Type II Vinyl
<b>MATCH:</b>	Reversible
<b>MAINTENANCE:</b>	Scrubable/Washable

 Advanced antimicrobial technology made with EPA-registered ingredients.

### MORE COLORS



LX1750  
Porcelain



LX1751  
Champagne



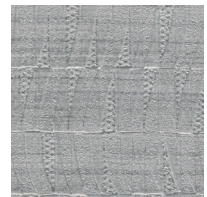
LX1752  
Taupe



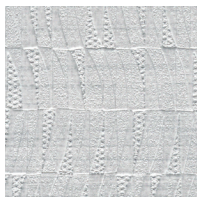
LX1753  
Platinum



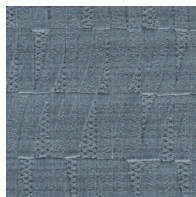
LX1754  
Oyster



LX1755  
Heather



LX1756  
Ash



LX1757  
Steel Blue

### TO THE TRADE

#### US MARKETS

Exclusively through Holly Hunt

[hollyhunt.com](http://hollyhunt.com)

#### INTERNATIONAL MARKETS

800.220.6730

[carlisleco.com](http://carlisleco.com)