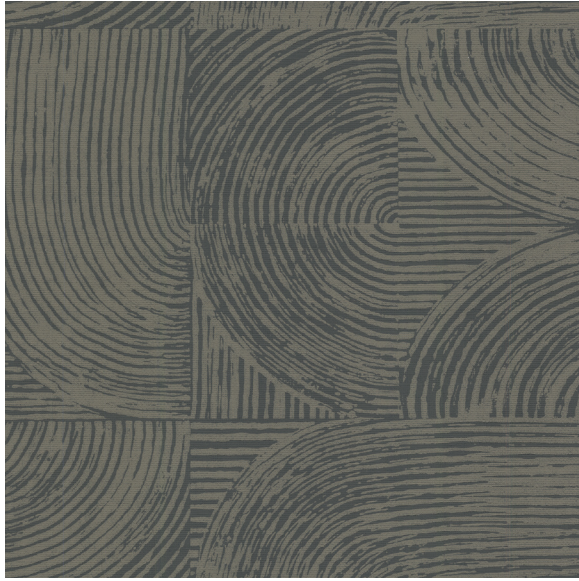




CARLISLE & CO.[®]

WALLCOVERINGS

— EST. 1998 —



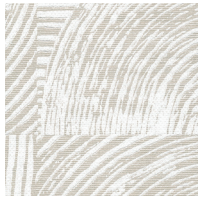
HANDCRAFTED

IMPRESSION

LX1745 ONYX

WIDTH:	27" (68,5 cm) Trimmed
REPEAT:	25¼" (64,13 cm)
BACKING:	Non-Woven
FLAME RATING:	ASTM E84 Class B
BOLT SIZE:	9 yd (8,23 m)
MATCH:	Drop
MINIMUM ORDER:	9 yd (8,23 m)
MAINTENANCE:	Soft Dry Brush

MORE COLORS



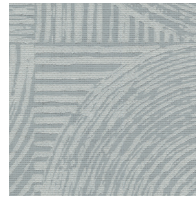
LX1740
Porcelain



LX1741
Taupe



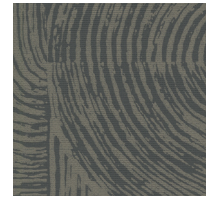
LX1742
Fog



LX1743
Stone



LX1744
Oatmeal



LX1745
Onyx

TO THE TRADE

US MARKETS

Exclusively through Holly Hunt

hollyhunt.com

INTERNATIONAL MARKETS

800.220.6730

carlisleco.com