



CARLISLE & CO.<sup>®</sup>

WALLCOVERINGS

— EST. 1998 —



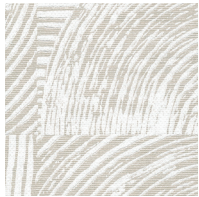
HANDCRAFTED

IMPRESSION

LX1741 TAUPE

WIDTH:	27" (68,5 cm) Trimmed
REPEAT:	25¼" (64,13 cm)
BACKING:	Non-Woven
FLAME RATING:	ASTM E84 Class B
BOLT SIZE:	9 yd (8,23 m)
MATCH:	Drop
MINIMUM ORDER:	9 yd (8,23 m)
MAINTENANCE:	Soft Dry Brush

MORE COLORS



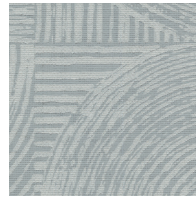
LX1740  
Porcelain



LX1741  
Taupe



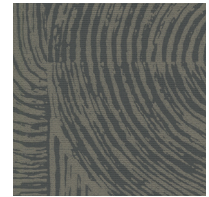
LX1742  
Fog



LX1743  
Stone



LX1744  
Oatmeal



LX1745  
Onyx

TO THE TRADE

US MARKETS

Exclusively through Holly Hunt

[hollyhunt.com](http://hollyhunt.com)

INTERNATIONAL MARKETS

800.220.6730

[carlisleco.com](http://carlisleco.com)