



CARLISLE & CO.[®]

WALLCOVERINGS

— EST. 1998 —



HANDCRAFTED

FUSION EDGE

LX1727 CERULEAN

WIDTH:	36" (91,4 cm) Trimmed
REPEAT:	None
BACKING:	Non-Woven
FLAME RATING:	ASTM E84 Class B
BOLT SIZE:	8 yd (7,32 m)
MATCH:	Random Essentially Seamless
MINIMUM ORDER:	8 yd (7,32 m)
MAINTENANCE:	Soft Dry Brush

MORE COLORS



LX1720
Porcelain



LX1721
Oatmeal



LX1722
Sandstone



LX1723
Soft Silver



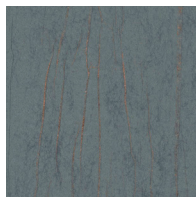
LX1724
Stone



LX1725
Taupe



LX1726
Dove



LX1727
Cerulean

TO THE TRADE

US MARKETS

Exclusively through Holly Hunt

hollyhunt.com

INTERNATIONAL MARKETS

800.220.6730

carlisleco.com