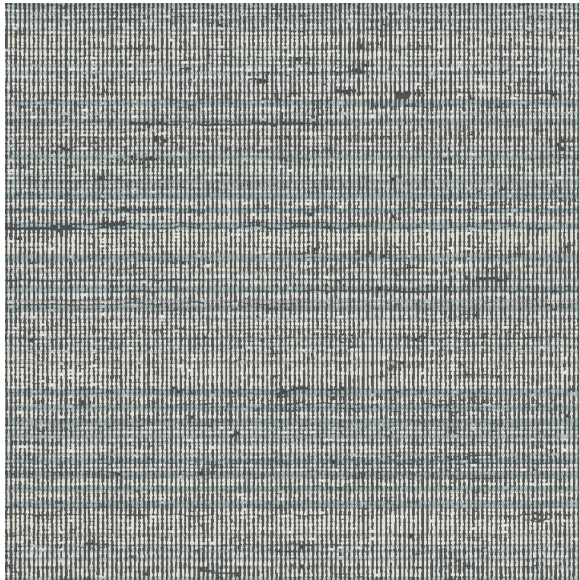




# CARLISLE & CO.

WALLCOVERINGS

— EST. 1998 —




HIGH PERFORMANCE VINYL

## VISTA SILK

### LX1718 TWILIGHT

|                      |  |
|----------------------|--|
| <b>WIDTH:</b>        | 55½" (140,9 cm) Untrimmed<br>Trims to 54" (137,1 cm) |
| <b>REPEAT:</b>       | Random   |
| <b>BACKING:</b>      | Non-Woven  |
| <b>FLAME RATING:</b> | ASTM E84 Class A                                     |
| <b>WEIGHT:</b>       | 20oz. Type II Vinyl                                  |
| <b>MATCH:</b>        | Non-Reversible                                       |
| <b>MAINTENANCE:</b>  | Scrubbable/Washable                                  |

 Advanced antimicrobial technology made with EPA-registered ingredients.

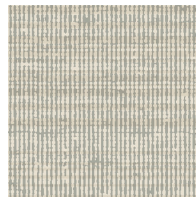
### MORE COLORS



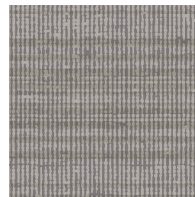
LX1710  
Porcelain



LX1711  
Sandstone



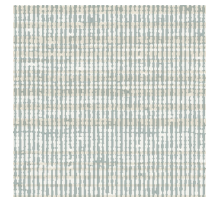
LX1712  
Taupe



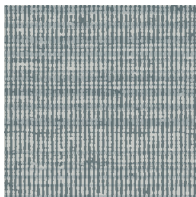
LX1713  
Dove



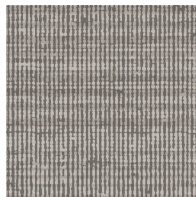
LX1714  
Platinum



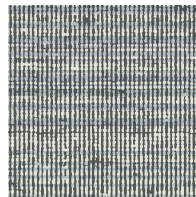
LX1715  
Ice



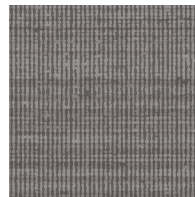
LX1716  
Stone



LX1717  
Glacier



LX1718  
Twilight



LX1719  
Anchor

### TO THE TRADE

#### US MARKETS

Exclusively through Holly Hunt

[hollyhunt.com](http://hollyhunt.com)

#### INTERNATIONAL MARKETS

800.220.6730

[carlisleco.com](http://carlisleco.com)