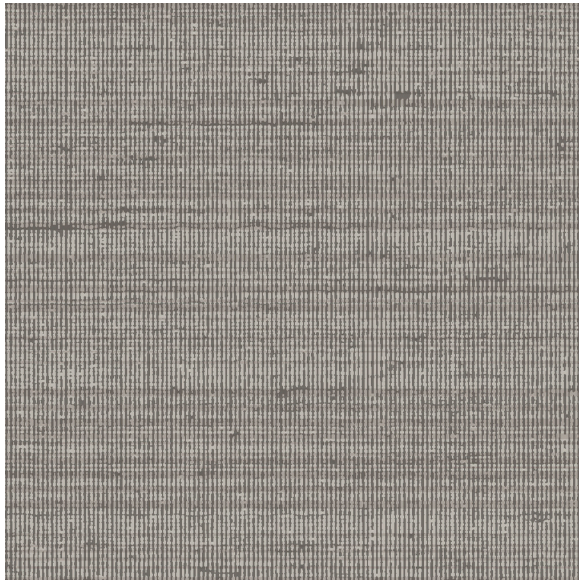




# CARLISLE & CO.

WALLCOVERINGS

— EST. 1998 —




HIGH PERFORMANCE VINYL

## VISTA SILK

### LX1717 GLACIER

<b>WIDTH:</b>	55½" (140,9 cm) Untrimmed Trims to 54" (137,1 cm)
<b>REPEAT:</b>	Random
<b>BACKING:</b>	Non-Woven
<b>FLAME RATING:</b>	ASTM E84 Class A
<b>WEIGHT:</b>	20oz. Type II Vinyl
<b>MATCH:</b>	Non-Reversible
<b>MAINTENANCE:</b>	Scrubbable/Washable

 Advanced antimicrobial technology made with EPA-registered ingredients.

### MORE COLORS



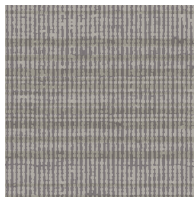
LX1710  
Porcelain



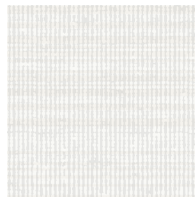
LX1711  
Sandstone



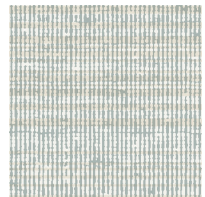
LX1712  
Taupe



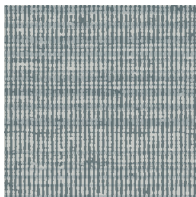
LX1713  
Dove



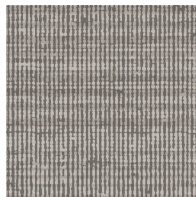
LX1714  
Platinum



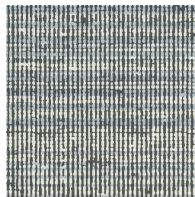
LX1715  
Ice



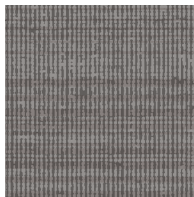
LX1716  
Stone



LX1717  
Glacier



LX1718  
Twilight



LX1719  
Anchor

### TO THE TRADE

#### US MARKETS

Exclusively through Holly Hunt

[hollyhunt.com](http://hollyhunt.com)

#### INTERNATIONAL MARKETS

800.220.6730

[carlisleco.com](http://carlisleco.com)